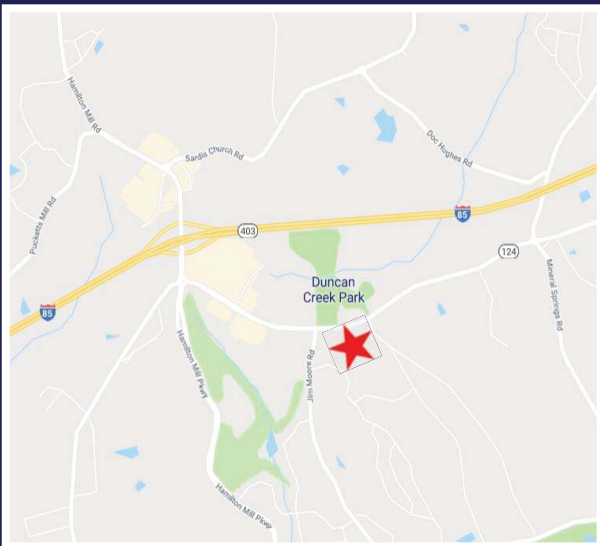


# Dacula Medical Space For Lease

**3625 Braselton Highway  
Dacula, GA 30019  
(Gwinnett County)**



**Space Available: 1,595sf - 3,645sf**  
**Lease Rate: \$23.00/sf (MG)**



## Property Details:

- Built Out Medical Suites Available  
Suite 203: 3,645sf  
Suite 204: 1,595sf
- Existing Medical Tenants on Site - Pediatrics, Dental, Spine & Pain, Podiatry, and Endodontics,
- Excellent Visibility on Braselton Highway with Monument Signage
- Proximity to Northeast Georgia Health Systems - Braselton Hospital Location

**For more information, please contact:**

**Michael Ulin**

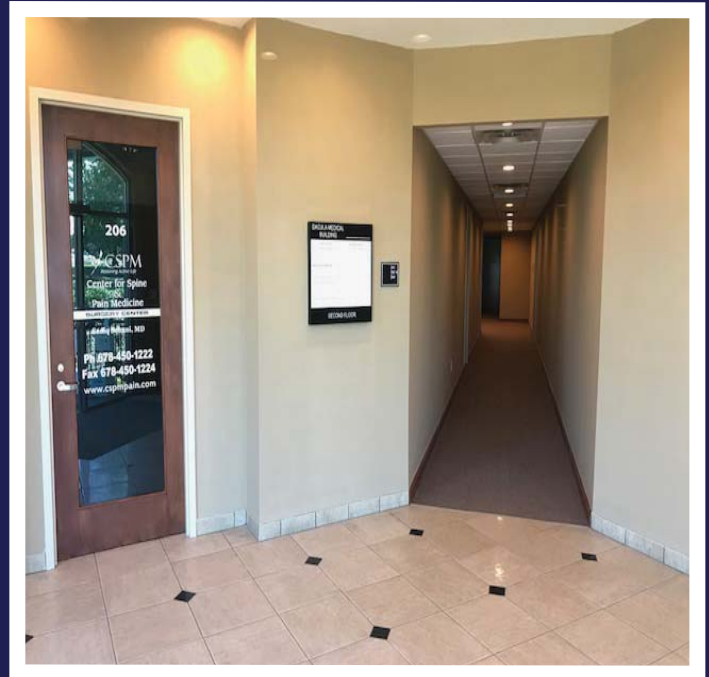
(c) 404-966-6698

(o) 770-393-2006

[mulin@rg-re.com](mailto:mulin@rg-re.com)



# 3625 Braselton Highway, Dacula



**For more information, please contact:**

**Michael Ulin**

(c) 404-966-6698

(o) 770-393-2006

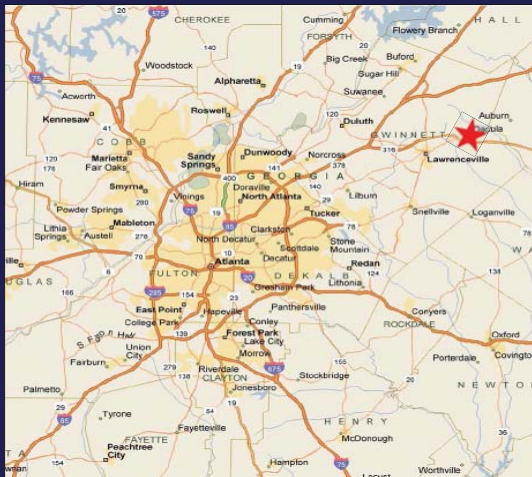
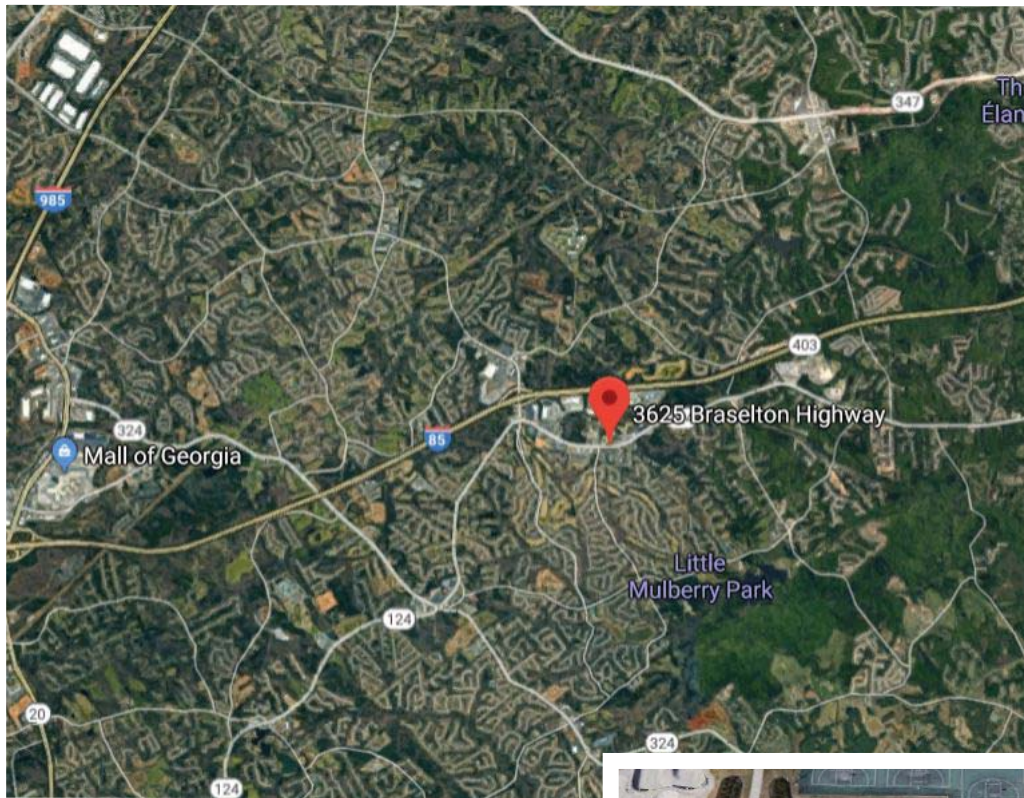
[mulin@rg-re.com](mailto:mulin@rg-re.com)



1835 Savoy Drive | Suite 101 | Atlanta, GA 30341 | Work. 770-393-2006 | [www.rg-re.com](http://www.rg-re.com)

(Information contained herein has been obtained from sources we deem reliable. We have no reason to doubt its accuracy, but we do not guarantee it.)

# 3625 Braselton Highway, Dacula



For more information, please contact:

**Michael Ulin**

(c) 404-966-6698

(o) 770-393-2006

[mulin@rg-re.com](mailto:mulin@rg-re.com)

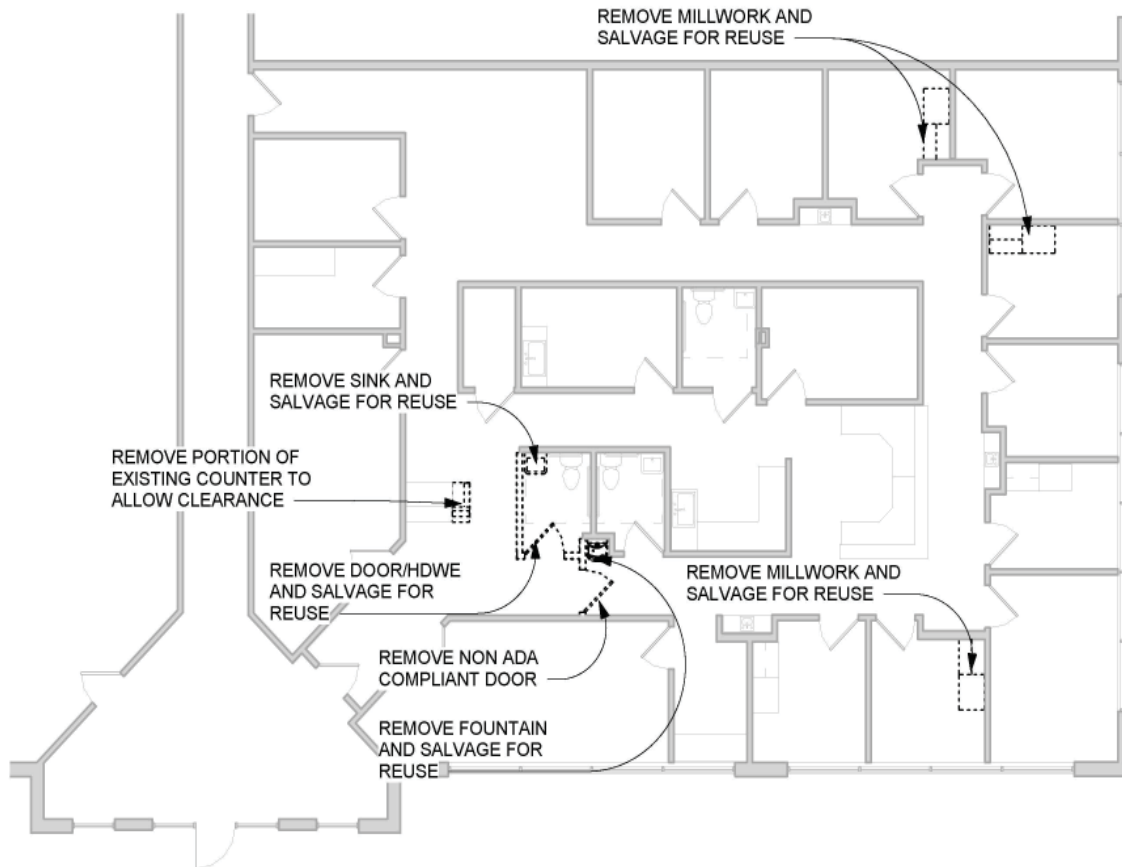


1835 Savoy Drive | Suite 101 | Atlanta, GA 30341 | Work. 770-393-2006 | [www.rg-re.com](http://www.rg-re.com)

(Information contained herein has been obtained from sources we deem reliable. We have no reason to doubt its accuracy, but we do not guarantee it.)

# 3625 Braselton Highway, Dacula

## Floor Plan Suite 203 3,645 SF



3625 Braselton Hwy, Suite 203  
Dacula, GA 30019

01/05/2021  
21911.00



**For more information, please contact:**

**Michael Ulin**

(c) 404-966-6698

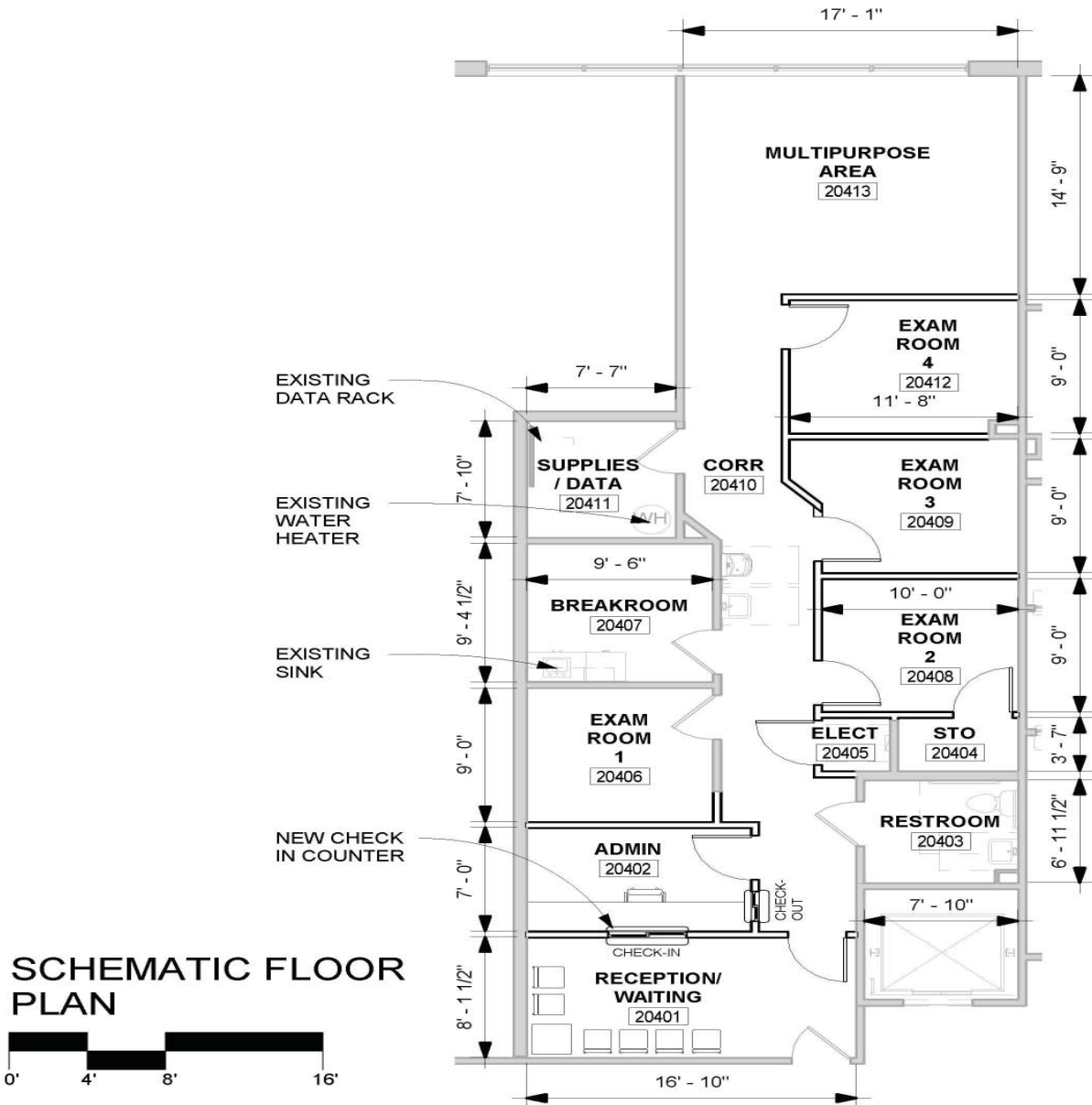
(o) 770-393-2006

[mulin@rg-re.com](mailto:mulin@rg-re.com)



# 3625 Braselton Highway, Dacula

## Floor Plan Suite 204 1,595 SF



SUITE 204  
3625 BRASELTON HWY  
DACULA GA 30519

10/07/2022  
22958.00



For more information, please contact:

Michael Ulin

(c) 404-966-6698

(o) 770-393-2006

[mulin@rg-re.com](mailto:mulin@rg-re.com)

