

# Penthouse for Sale

411 LAKEWOOD CIRCLE, COLORADO SPRINGS, CO 80910



## Overview

NOW FOR SALE: THE PENTHOUSE IN THE SATELLITE HOTEL.

The condominium is Located at 411 South Academy Boulevard on the 14th floor.

It has the best unobstructed (360 degrees) views of the Pikes Peak, the front range, and the prairies. This has both, the most amazing sunrise and sunset views!

The condo is 5,041 SF. It's zoned PDZ AO which allows for most reasonable uses including office or residential or commercial use.

The HOA cost (which includes utilities and building maintenance) is \$1,825 a month. The 2024 annual tax bill was \$11,244 = (\$950 per month).

For the confidential financial information and a private showing,  
call Tim Leigh: 719-337-955, Holly Trinidad: 719-337-0999.

## Property Details



**Sales Price**  
\$750,000



**Condo Size**  
5,041 SF



**Zoning**  
PDZ AO

Rev: November 26, 2025



### Our Network Is Your Edge

All information is from sources deemed reliable and is subject to errors, omissions, change of price, rental, prior sale, and withdrawal without notice. Prospect should carefully verify each item of information contained herein.

### Tim Leigh

C: 719.337.9551  
O: 719.630.2277  
Tim@HoffLeigh.com

### Holly Trinidad

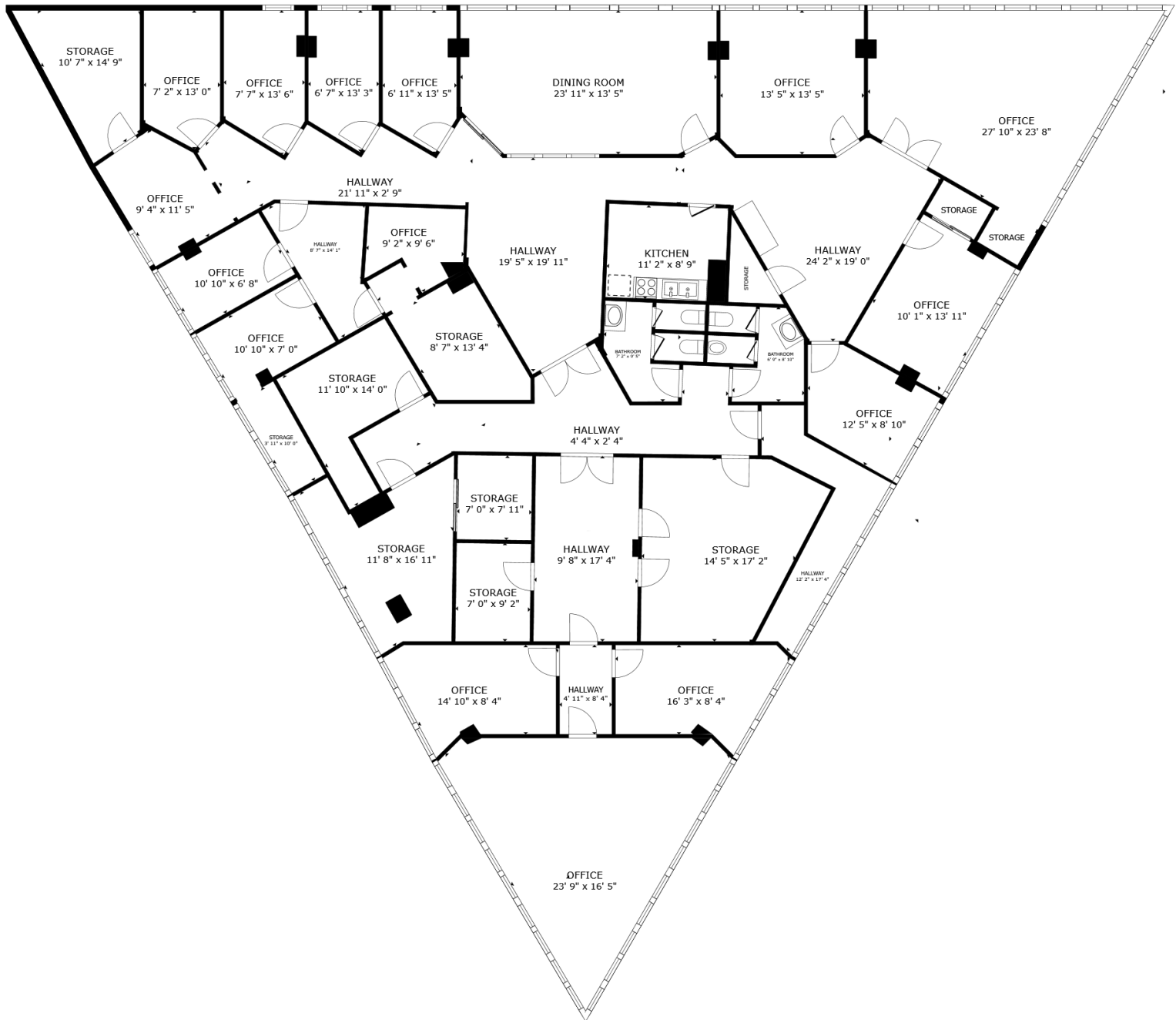
C: 719.337.0999  
O: 719.630.2277  
Holly@HoffLeigh.com

### Brian Canady

C: 719.433.1102  
O: 719.630.2277  
BCanady@HoffLeigh.com

# Penthouse for Sale

411 LAKEWOOD CIRCLE, COLORADO SPRINGS, CO 80910



FLOOR PLAN

Rev: November 26, 2025

## Our Network Is Your Edge

All information is from sources deemed reliable and is subject to errors, omissions, change of price, rental, prior sale, and withdrawal without notice. Prospect should carefully verify each item of information contained herein.

### Tim Leigh

C: 719.337.9551  
O: 719.630.2277  
Tim@HoffLeigh.com

### Holly Trinidad

C: 719.337.0999  
O: 719.630.2277  
Holly@HoffLeigh.com

### Brian Canady

C: 719.433.1102  
O: 719.630.2277  
BCanady@HoffLeigh.com



# Penthouse for Sale

411 LAKEWOOD CIRCLE, COLORADO SPRINGS, CO 80910



Rev: November 26, 2025

## Our Network Is Your Edge

All information is from sources deemed reliable and is subject to errors, omissions, change of price, rental, prior sale, and withdrawal without notice. Prospect should carefully verify each item of information contained herein.

## Tim Leigh

C: 719.337.9551  
O: 719.630.2277  
Tim@HoffLeigh.com

## Holly Trinidad

C: 719.337.0999  
O: 719.630.2277  
Holly@HoffLeigh.com

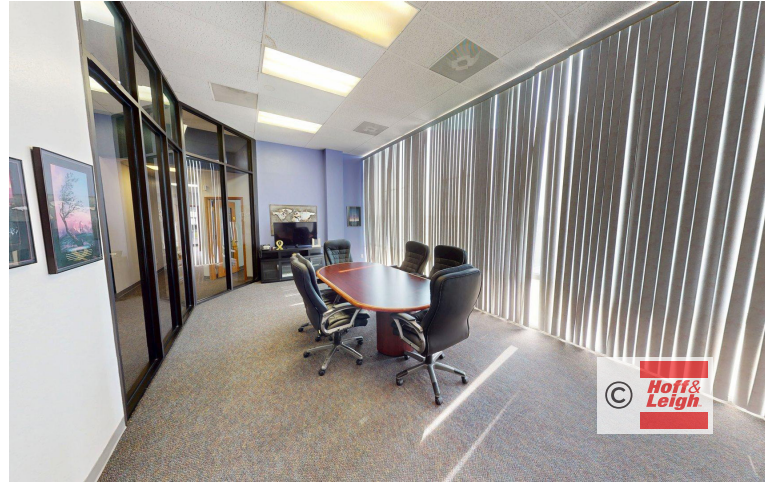
## Brian Canady

C: 719.433.1102  
O: 719.630.2277  
BCanady@HoffLeigh.com



# Penthouse for Sale

411 LAKEWOOD CIRCLE, COLORADO SPRINGS, CO 80910



Rev: November 26, 2025

## Our Network Is Your Edge

All information is from sources deemed reliable and is subject to errors, omissions, change of price, rental, prior sale, and withdrawal without notice. Prospect should carefully verify each item of information contained herein.

### Tim Leigh

C: 719.337.9551  
O: 719.630.2277  
Tim@HoffLeigh.com

### Holly Trinidad

C: 719.337.0999  
O: 719.630.2277  
Holly@HoffLeigh.com

### Brian Canady

C: 719.433.1102  
O: 719.630.2277  
BCanady@HoffLeigh.com



# Penthouse for Sale

411 LAKEWOOD CIRCLE, COLORADO SPRINGS, CO 80910



Rev: November 26, 2025

## Our Network Is Your Edge

All information is from sources deemed reliable and is subject to errors, omissions, change of price, rental, prior sale, and withdrawal without notice. Prospect should carefully verify each item of information contained herein.

### Tim Leigh

C: 719.337.9551  
O: 719.630.2277  
Tim@HoffLeigh.com

### Holly Trinidad

C: 719.337.0999  
O: 719.630.2277  
Holly@HoffLeigh.com

### Brian Canady

C: 719.433.1102  
O: 719.630.2277  
BCanady@HoffLeigh.com