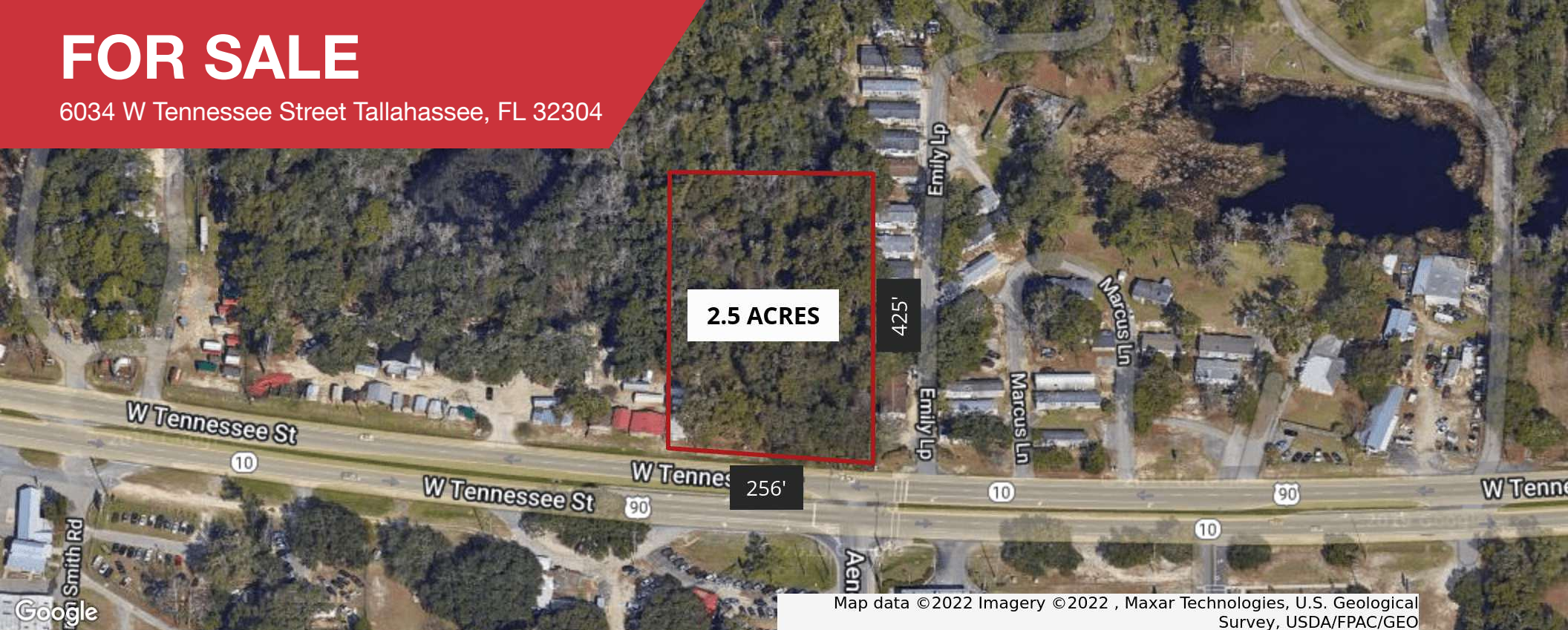


FOR SALE

6034 W Tennessee Street Tallahassee, FL 32304



Map data ©2022 Imagery ©2022, Maxar Technologies, U.S. Geological Survey, USDA/FPAC/GEO

LAND | +/- 2.5 Acres

- Excellent Retail/Commercial Site
- Zoning: Commercial Parkway (CP)
- Less Than 2 Miles from Future 123,000 SF Amazon Facility
- Only 1 Mile West from Capital Circle & 2 Miles from I-10 Exit
- +/- 384 Feet of Frontage on W Tennessee Street (Hwy 90)
- Adjacent 11 Acres to the North May be Purchased as Well
- Traffic Count: 24,500 Vehicles/Day

Sale Price: \$545,000



Map data ©2025 Google

✉ **Peter Gonzalez, Jr.**
+1 850 224 2300
pete@talcor.com

✉ **Alan Richardson**
+1 850 224 2300
alan@talcor.com

No Warranty Or Representation, Express Or Implied, Is Made As To The Accuracy Of The Information Contained Herein, And The Same Is Submitted Subject To Errors, Omissions, Change Of Price, Rental Or Other Conditions, Prior Sale, Lease Or Financing, Or Withdrawal Without Notice, And Of Any Special Listing Conditions Imposed By Our Principals No Warranties Or Representations Are Made As To The Condition Of The Property Or Any Hazards Contained Therein Are Any To Be Implied.



NAI TALCOR

1018 Thomasville Road, Suite 200A
talcor.com

FOR SALE

6034 W Tennessee Street Tallahassee, FL 32304



✉ **Peter Gonzalez, Jr.**
+1 850 224 2300
pete@talcor.com

✉ **Alan Richardson**
+1 850 224 2300
alan@talcor.com

No Warranty Or Representation, Express Or Implied, Is Made As To The Accuracy Of The Information Contained Herein, And The Same Is Submitted Subject To Errors, Omissions, Change Of Price, Rental Or Other Conditions, Prior Sale, Lease Or Financing, Or Withdrawal Without Notice, And Of Any Special Listing Conditions Imposed By Our Principals No Warranties Or Representations Are Made As To The Condition Of The Property Or Any Hazards Contained Therein Are Any To Be Implied.

NAITACOR