

90 VERONA STREET  
90 VERONA STREET  
90 VERONA STREET  
**90 VERONA STREET**  
90 VERONA STREET  
90 VERONA STREET  
90 VERONA STREET

**BROOKLYN, NY 11231**



**COREY COHEN | CCOHEN@ROEBLINGGROUP.COM | 646.906.9054 | ROEBLINGGROUP.COM/COMMERCIAL**





An architectural rendering of a modern outdoor patio space. In the background, a two-story building with a red brick upper level and a white lower level serves as the backdrop. A covered bar area with a brick wall and various bottles is visible. The patio is furnished with wooden benches, tables, and umbrellas. Several people are depicted in the scene, including a group of four people on the left, a man in a yellow jacket on the right, and a dog. The foreground is filled with lush greenery, including tall grasses and large potted plants. The sky is a clear, bright blue.

# 90 Verona Street

Brooklyn, NY 11231

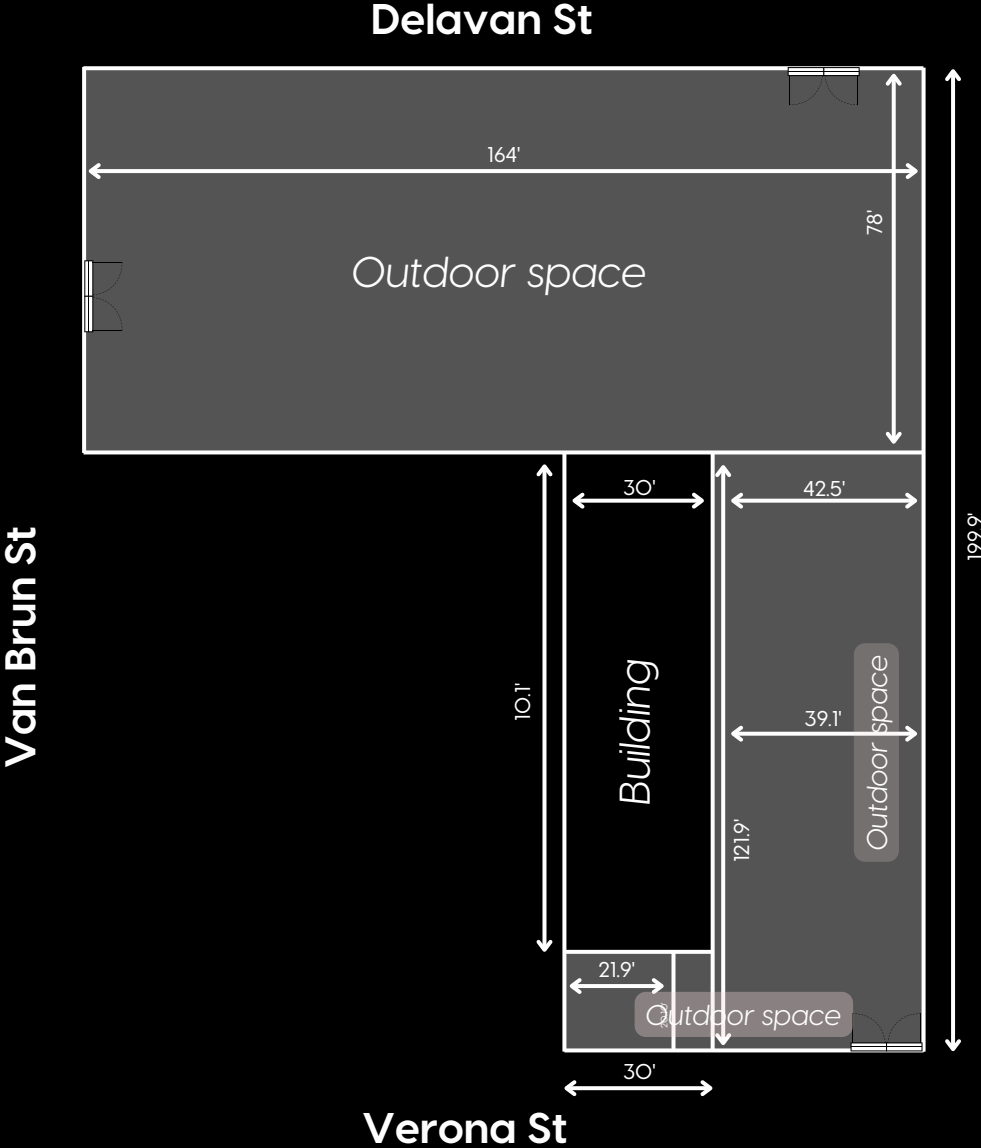
Step into the heart of Red Hook with 90 Verona Street, a dynamic 5,800 SF building offering versatile space and expansive parking options up to 4,500 SF. Nestled in a vibrant, growing community, this prime location boasts easy access to major highways, public transit, and local amenities like shops, restaurants, and parks.







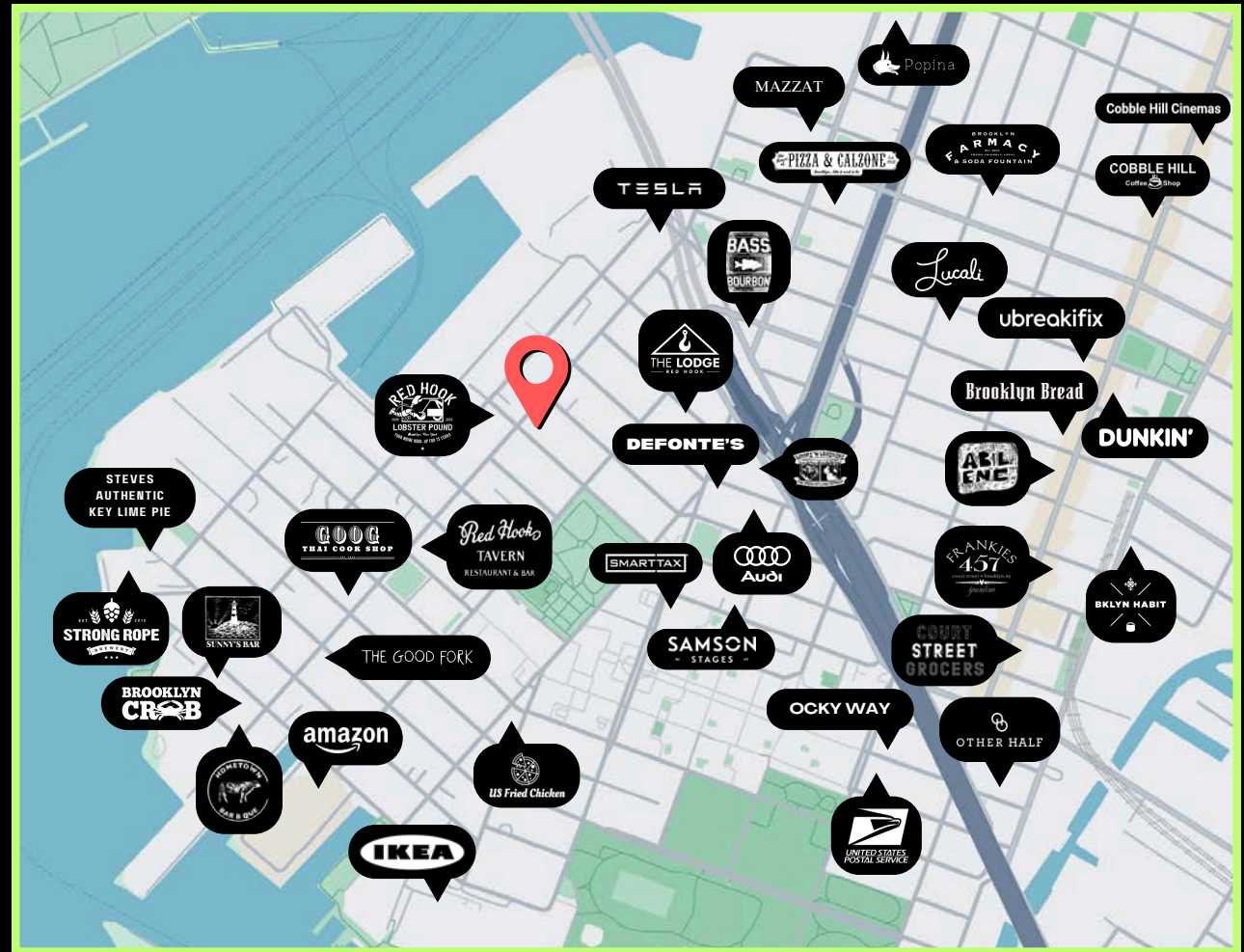




90 VERONA STREET

6 Minutes  
to Smith-9 Sts  
**F G** Station

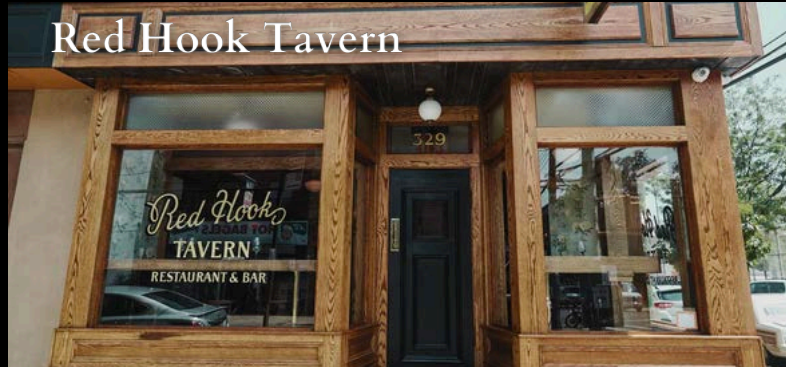
Travel time by car:  
Midtown Manhattan - 20 minutes  
Downtown Manhattan - 10 minutes





# The Neighborhood

Red Hook is a Brooklyn enclave where history and modernity merge by the waterfront, offering a picturesque view of the Statue of Liberty. It's a haven for artists and foodies alike, with its historic warehouses and artisanal eateries. Here, community spirit flourishes, and every sunset over the docks is a spectacle to behold.



Red Hook Tavern



Hometown  
Barbeque



Defonte's



Other Half Brewing Company



Coffey Park



Brooklyn  
Collective

# 90 Verona Street

Brooklyn, NY 11231

## SPACES AVAILABLE:

3,000–6,000 SF Building

5,000 SF Parking

Price: Negotiable

For viewings and inquiries, please contact:



**Corey Cohen**

[ccohen@roeblinggroup.com](mailto:ccohen@roeblinggroup.com) | 646.906.9054