

# FOR SALE

4.88 ACRES  
**INDUSTRIAL**



**\$495,000**

Vacant Cherry Hill  
WESTLAND, MICHIGAN

- Access off of Florence Avenue
- Potential Outside Storage

Lot Size	4.88 Acres	Zoning	I-1 Light Industrial
----------	------------	--------	----------------------

**Burger**

& COMPANY

38345 W. 10 Mile Road, Suite 100  
Farmington Hills, MI 48335

**248.536.2888**

WWW.BURGERCOLLC.COM

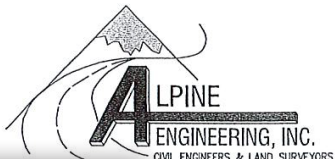
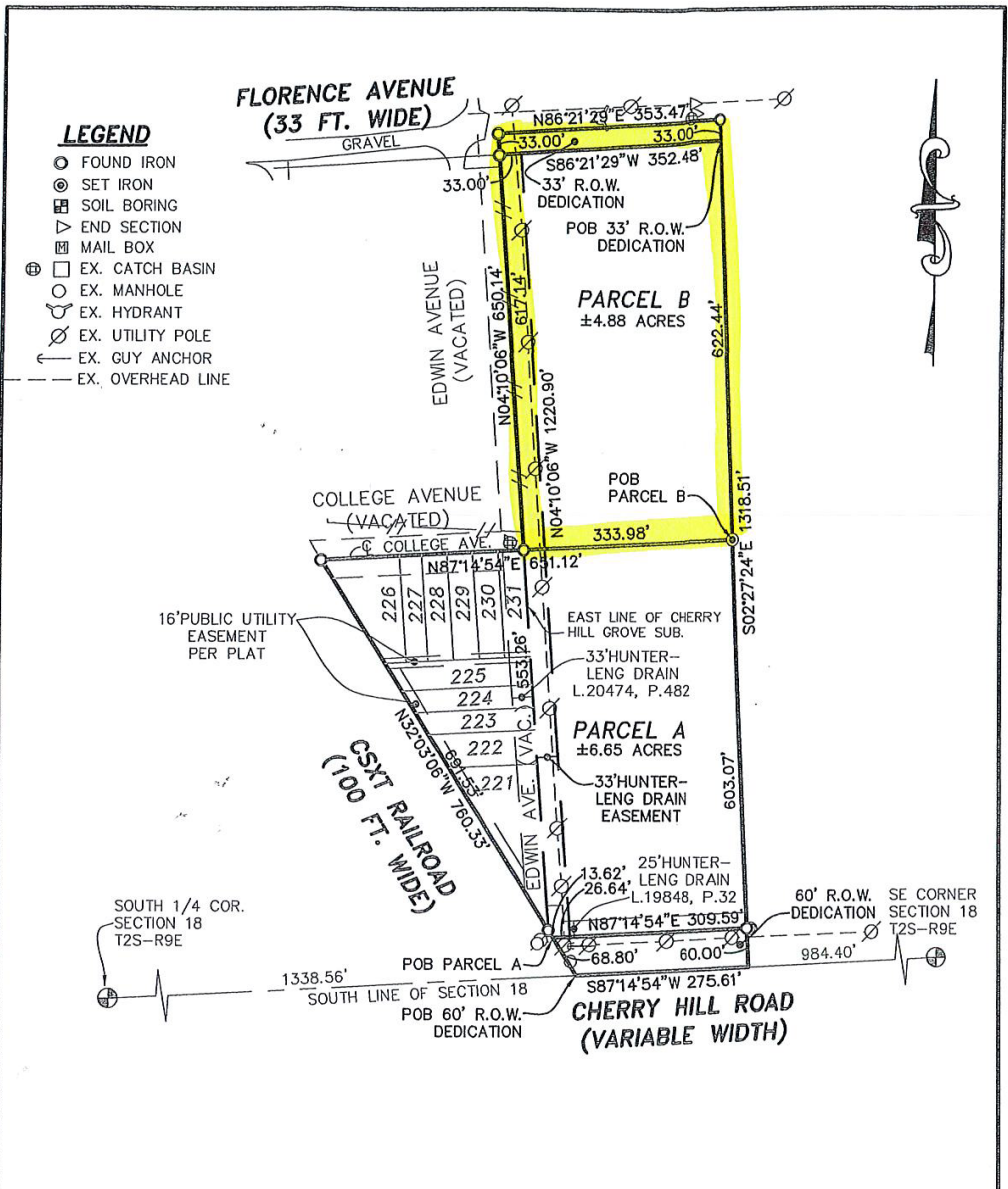
**Joe Pellerito**

Senior Associate

Cell: 248.417.8246

joe.pellerito@burgercollc.com

Information contained herein is deemed to be reliable but is not guaranteed and may be withdrawn at any time.



WEST ROAD  
# 109  
GAN 48377  
3701 (BUS)  
3765 (FAX)



CLIENT: SAMIR W. MASHNI, ESQ.		DATE: 12/23/21	
<b>PARCEL SPLIT</b>		DRAWN BY: TTP	
		CHECKED BY: JDH	
<b>VACANT LAND CHERRY HILL</b> SECTION: 18 TOWNSHIP: 2S RANGE: 9E CITY OF WESTLAND WAYNE COUNTY MICHIGAN		SCALE HOR 1"=200 FT. VER 1"= -- FT.	
		FBK: — CHF: — 2/3 19-638	

38345 W. 10 Mile Road, Suite 100  
Farmington Hills, MI 48335

**248.536.2888**  
WWW.BURGERCOLLC.COM

**Joe Pellerito**  
Senior Associate  
Cell: 248.417.8246  
joe.pellerito@burgercollc.com

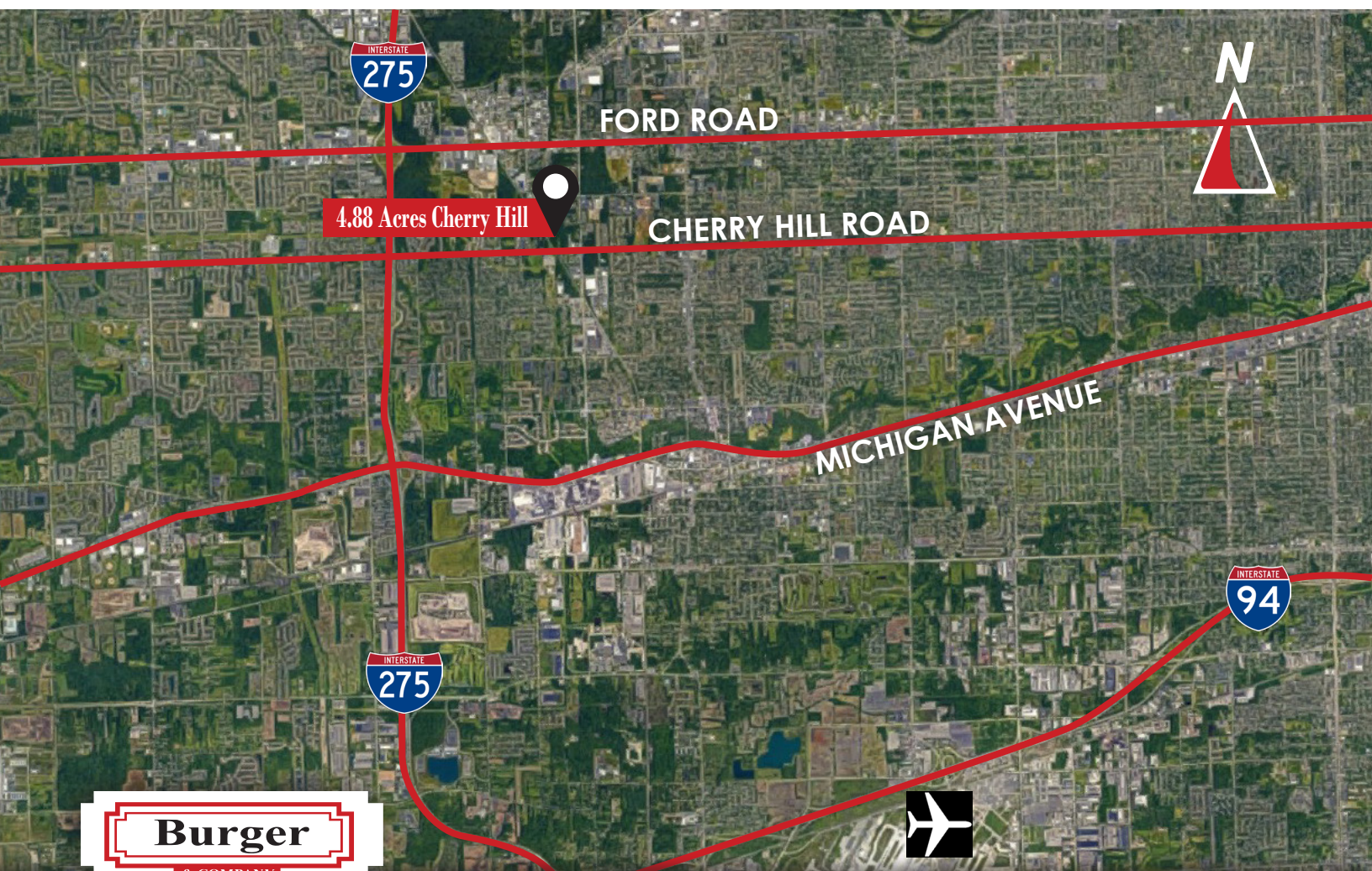


FLORENCE AVENUE

4.88 Acres Cherry Hill

NEWBURGH ROAD

CHERRY HILL ROAD



FORD ROAD

4.88 Acres Cherry Hill

CHERRY HILL ROAD

MICHIGAN AVENUE



38345 W. 10 Mile Road, Suite 100  
Farmington Hills, MI 48335

**248.536.2888**

[WWW.BURGERCOLLC.COM](http://WWW.BURGERCOLLC.COM)

Joe Pellerito  
Senior Associate  
Cell: 248.417.8246  
[joe.pellerito@burgercollc.com](mailto:joe.pellerito@burgercollc.com)

Information contained herein is deemed to be reliable but is not guaranteed and may be withdrawn at any time.