

A green-tinted background image featuring a mural of the blues musician John Lee Hooker. He is depicted in a dynamic, expressive pose, wearing a hat and a patterned shirt, with his arms outstretched. The mural is set against a textured, brick-like background.

29
16

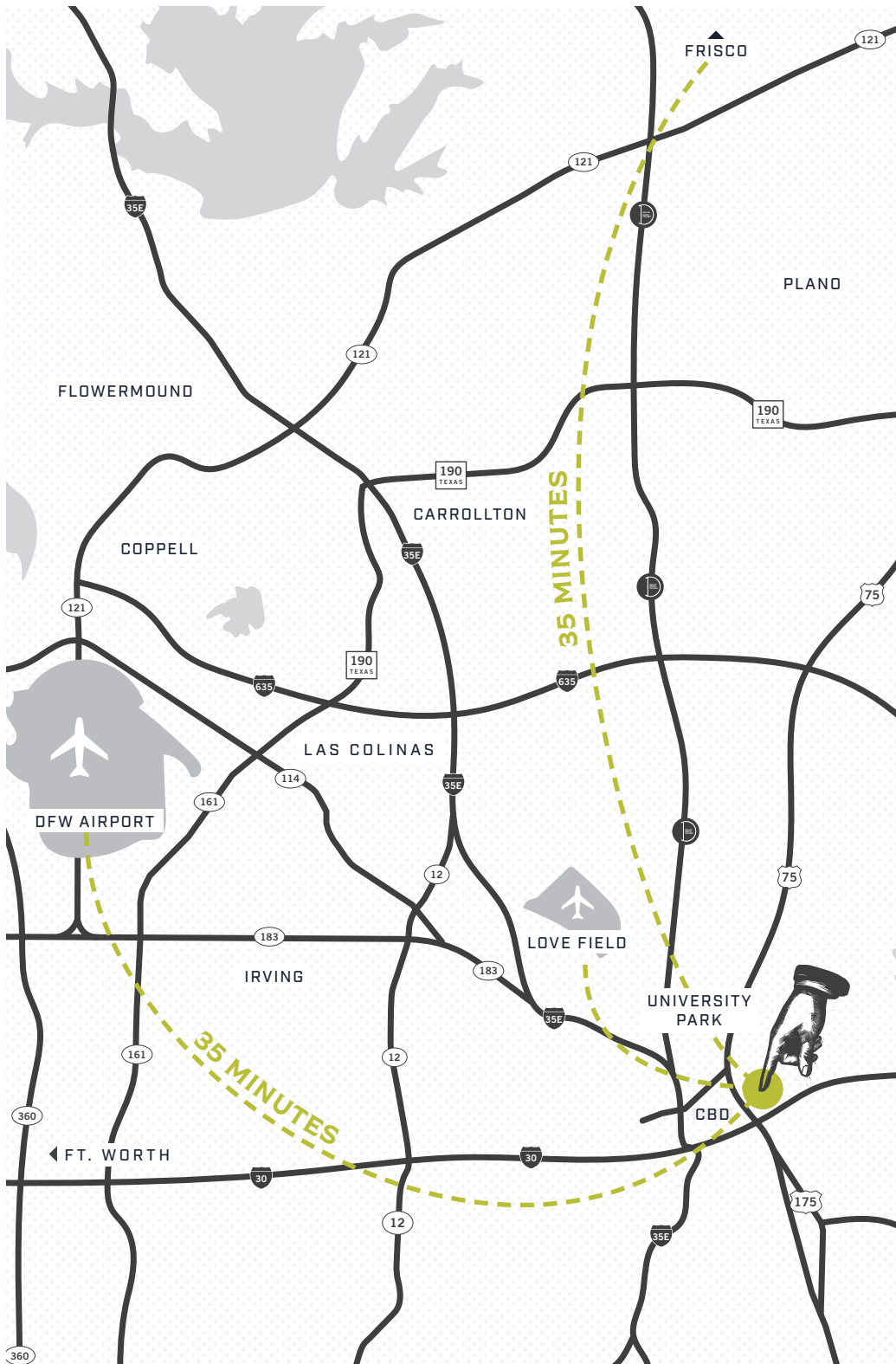
**TAYLOR
STREET**

**CULTIVATING
CREATIVITY**



OPEN HERE

UP TO 26,208 SF FOR LEASE



LOCATED IN THE HEART OF

DEEP ELLUM

DRIVE TIMES

1 MINUTE TO DALLAS CBD

5 MINUTES TO UPTOWN

15 MINUTES TO LOVE FIELD AIRPORT

30 MINUTES TO DFW INTL. AIRPORT

35 MINUTES TO FT. WORTH

35 MINUTES TO FRISCO

THE WORK- SPACE

HIGHLIGHTS

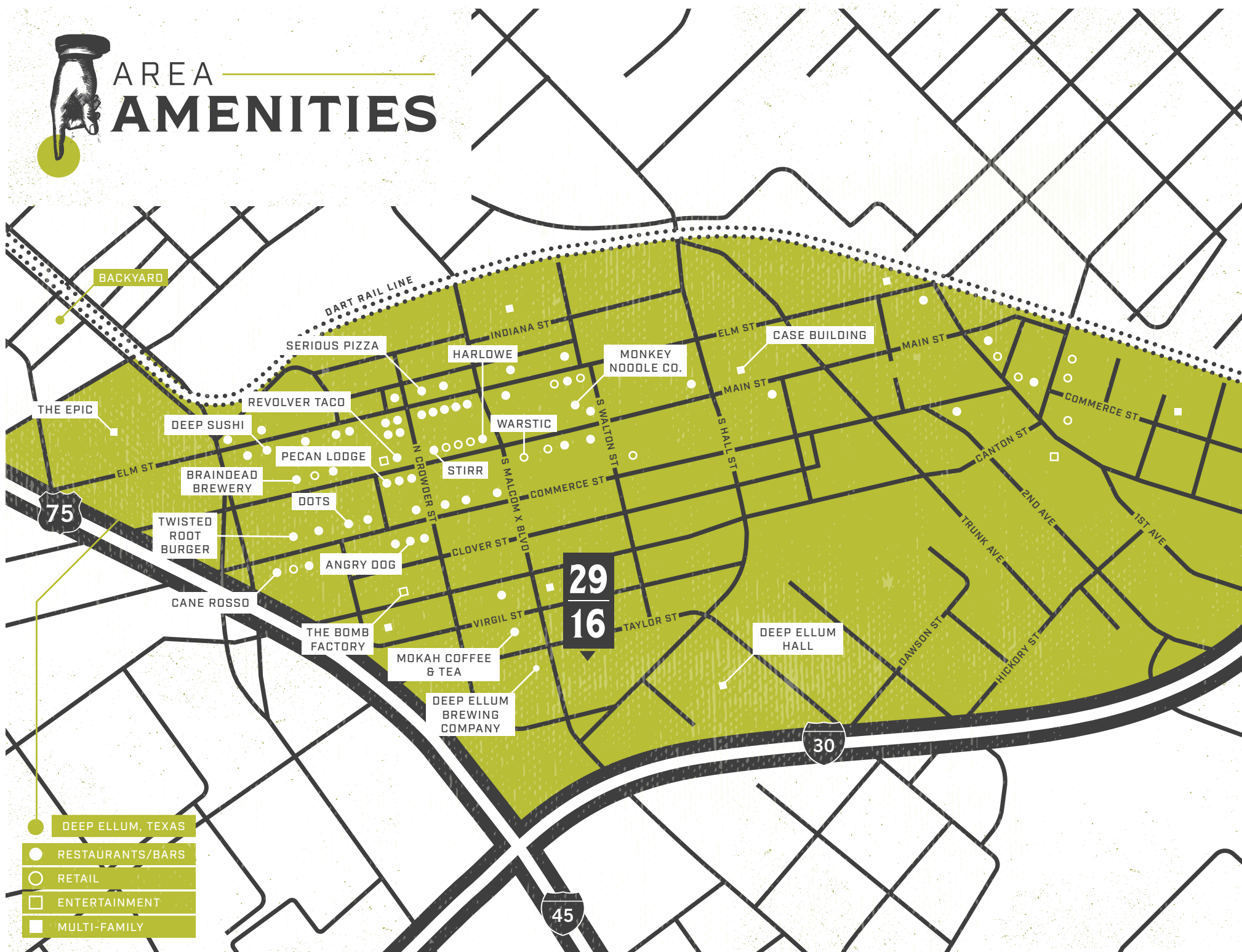
- Up to 26,208 SF for Lease
- In the heart of Deep Ellum
- Walkable to over 50 restaurants, coffee shops and retail offerings
- Direct access to Interstate 30, Interstate 75 & Woodall Rogers Freeway
- Ample parking
- Creative, tech finishes
- Concrete floors and 16' exposed ceilings
- 10-minute walk to DART Deep Ellum Station



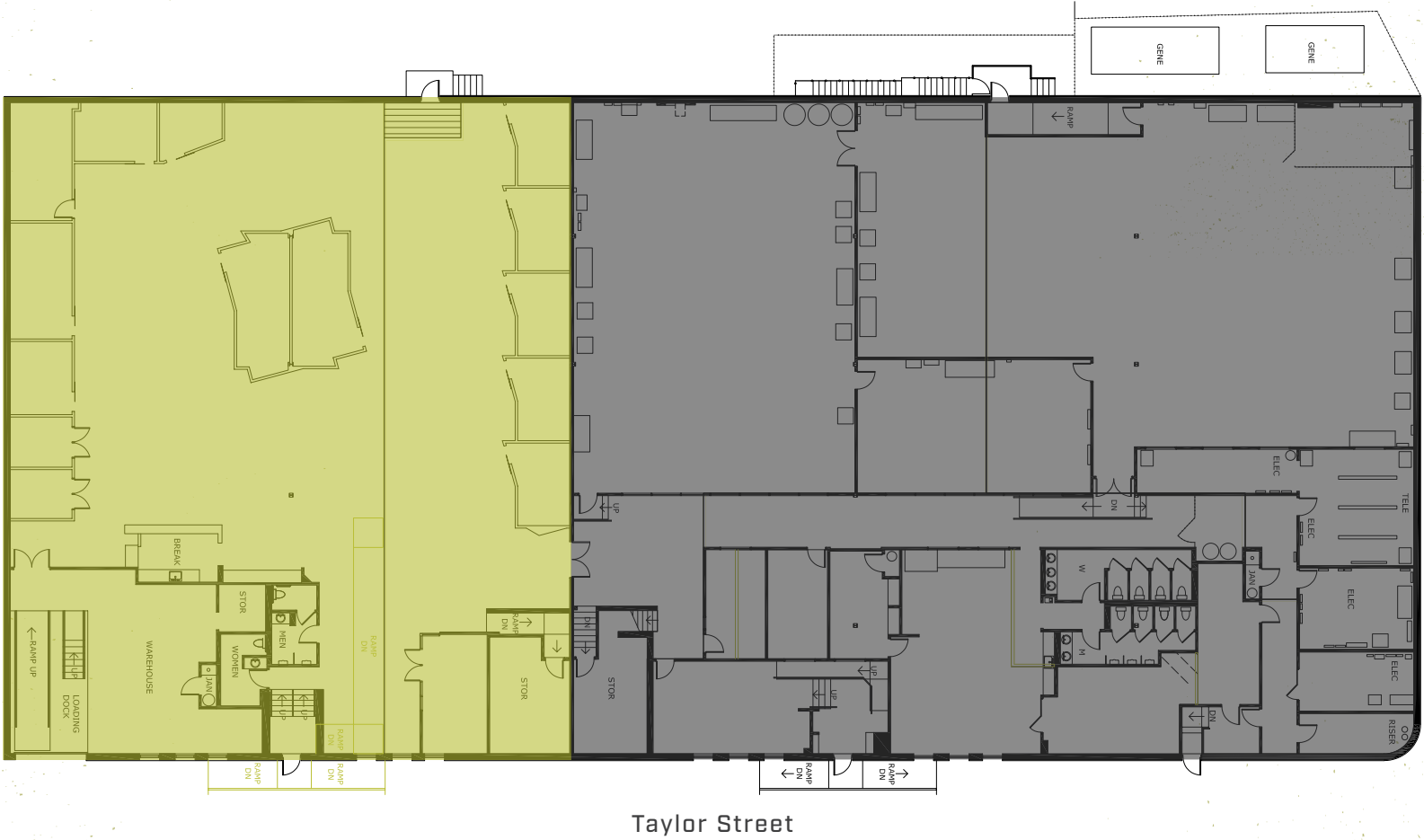


WORK
IN THE
HEART OF
CREATIVITY






TYPICAL FLOOR PLAN



 Current Availability - 10,325 sf

 Future Availability - 15,883 sf

Current Availability & Future Availability - 26,208 sf



LEASING INFORMATION

WARD
EASTMAN

972 663 9826
ward.eastman@cushwake.com

BAILEY
WOOD

972 663 9761
bailey.wood@cushwake.com



@2019 Cushman & Wakefield. All rights reserved. The information contained in this communication is strictly confidential. This information has been obtained from sources believed to be reliable but has not been verified. NO WARRANTY OR REPRESENTATION, EXPRESS OR IMPLIED, IS MADE AS TO THE CONDITION OF THE PROPERTY (OR PROPERTIES) REFERENCED HEREIN OR AS TO THE ACCURACY OR COMPLETENESS OF THE INFORMATION CONTAINED HEREIN, AND SAME IS SUBMITTED SUBJECT TO ERRORS, OMISSIONS, CHANGE OF PRICE, RENTAL OR OTHER CONDITIONS, WITHDRAWAL WITHOUT NOTICE, AND TO ANY SPECIAL LISTING CONDITIONS IMPOSED BY THE PROPERTY OWNER(S). ANY PROJECTIONS, OPINIONS OR ESTIMATES ARE SUBJECT TO UNCERTAINTY AND DO NOT SIGNIFY CURRENT OR FUTURE PROPERTY PERFORMANCE.