

**FOR LEASE**

# EXECUTIVE CENTER

1 CORPUS CHRISTI PLACE HILTON HEAD ISLAND, SC 29928



**VM** | REAL ESTATE 



## CONTACT

**SUZANNA ROSE MCDONALD**

843.816.2547

SRM@vmrealestate.com



FOR LEASE

# PROPERTY OVERVIEW

1 CORPUS CHRISTI PLACE HILTON HEAD ISLAND, SC 29928



## OFFERING SUMMARY

Available SF:	830 SF
Lease Rate:	\$1,875.00 per month (Gross)
Year Built:	1982
Zoning:	Commercial
Market:	Hilton Head Commercial

## PROPERTY & LEASE OVERVIEW

These two freshly renovated professional office suites are located in the highly sought after office condominium complex of Executive Center. The condominium has been recently gutted and fitted out with LVP flooring, new carpet and paint, modernized kitchen and appliances, stylish fixtures, a contemporary staircase design, updated window treatments, bathroom built-ins, and a new HVAC. Each include 2-4 offices, private restrooms, and a shared kitchen. Gross lease includes ample parking, dumpster usage, building insurance, Common Area Maintenance, utilities and pest control. Tenant responsible for its own g/l and contents insurance.

## LOCATION OVERVIEW

Nestled off of New Orleans Road between Pope Avenue and Sea Pines Circle, the location is minutes away from everything the South End of Hilton Head Island has to offer. This includes its world renowned beaches and bike paths as well as multiple retail shops and restaurants, Celebration Park, Coligny Plaza, Sea Pines, and Shipyard. 1 Corpus Christi Place has easy access, abundant parking, and a nice mix of adjacent occupants which include attorneys, financial, real estate and professional services.

**SUZANNA ROSE MCDONALD**

843.816.2547

SRM@vmrealestate.com

VM REAL ESTATE | 843.338.1799 | 39 PEARCE RD. BLUFFTON, SC 29910 | VMREALESTATE.COM

The information presented here is deemed to be accurate, but it has not been independently verified. We make no warranty or representation. It is your responsibility to independently confirm accuracy and completeness.

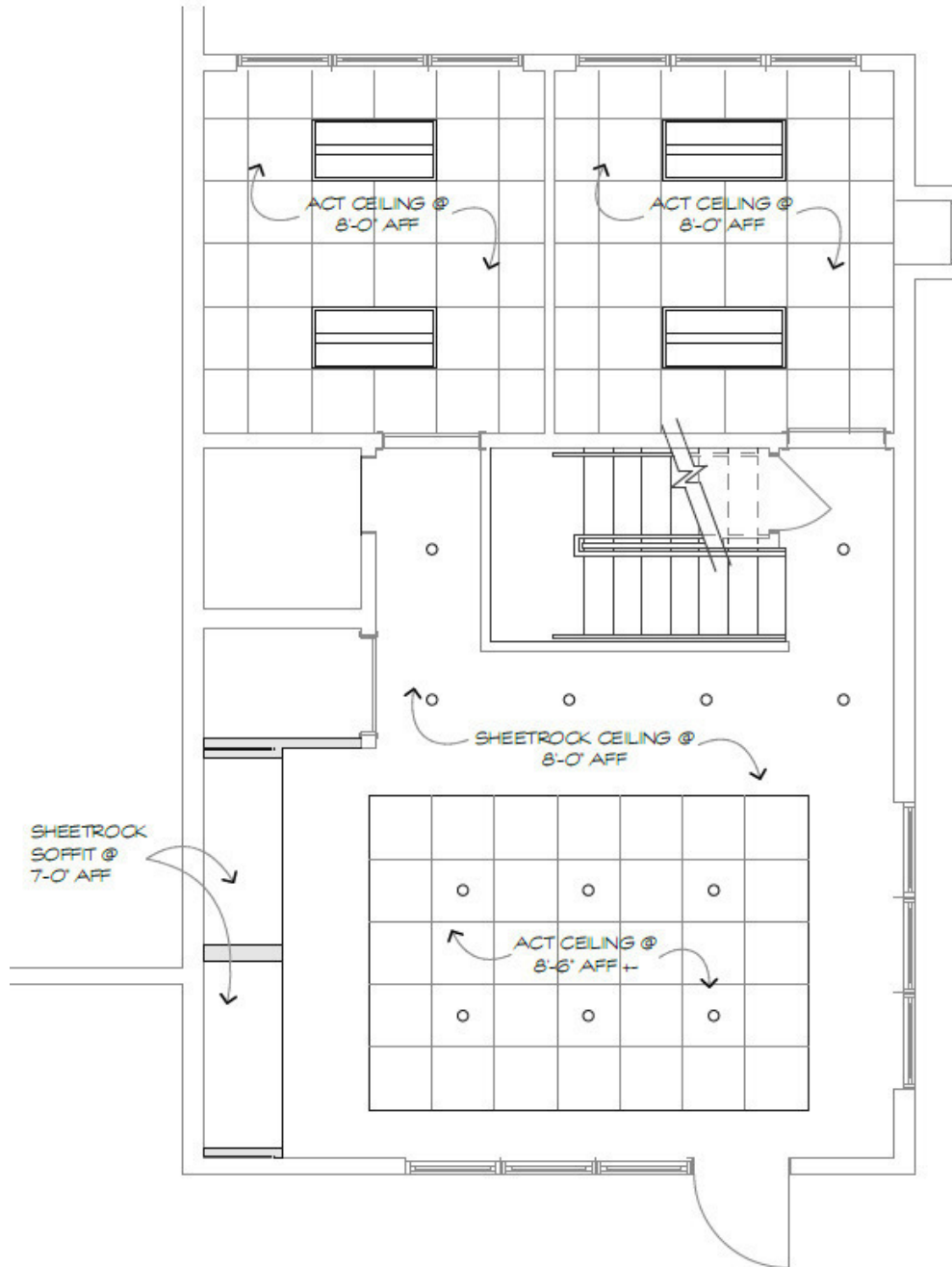


VM | REAL ESTATE

FOR LEASE

# FLOOR PLAN - 1ST FLOOR

1 CORPUS CHRISTI PLACE HILTON HEAD ISLAND, SC 29928



NEW FIRST FLOOR RCP

SCALE: 1/4" = 1'-0"

3  
A.1

SUZANNA ROSE MCDONALD

843.816.2547

SRM@vmrealestate.com

VM REAL ESTATE | 843.338.1799 | 39 PEARCE RD. BLUFFTON, SC 29910 | VMREALESTATE.COM

The information presented here is deemed to be accurate, but it has not been independently verified. We make no warranty or representation. It is your responsibility to independently confirm accuracy and completeness.

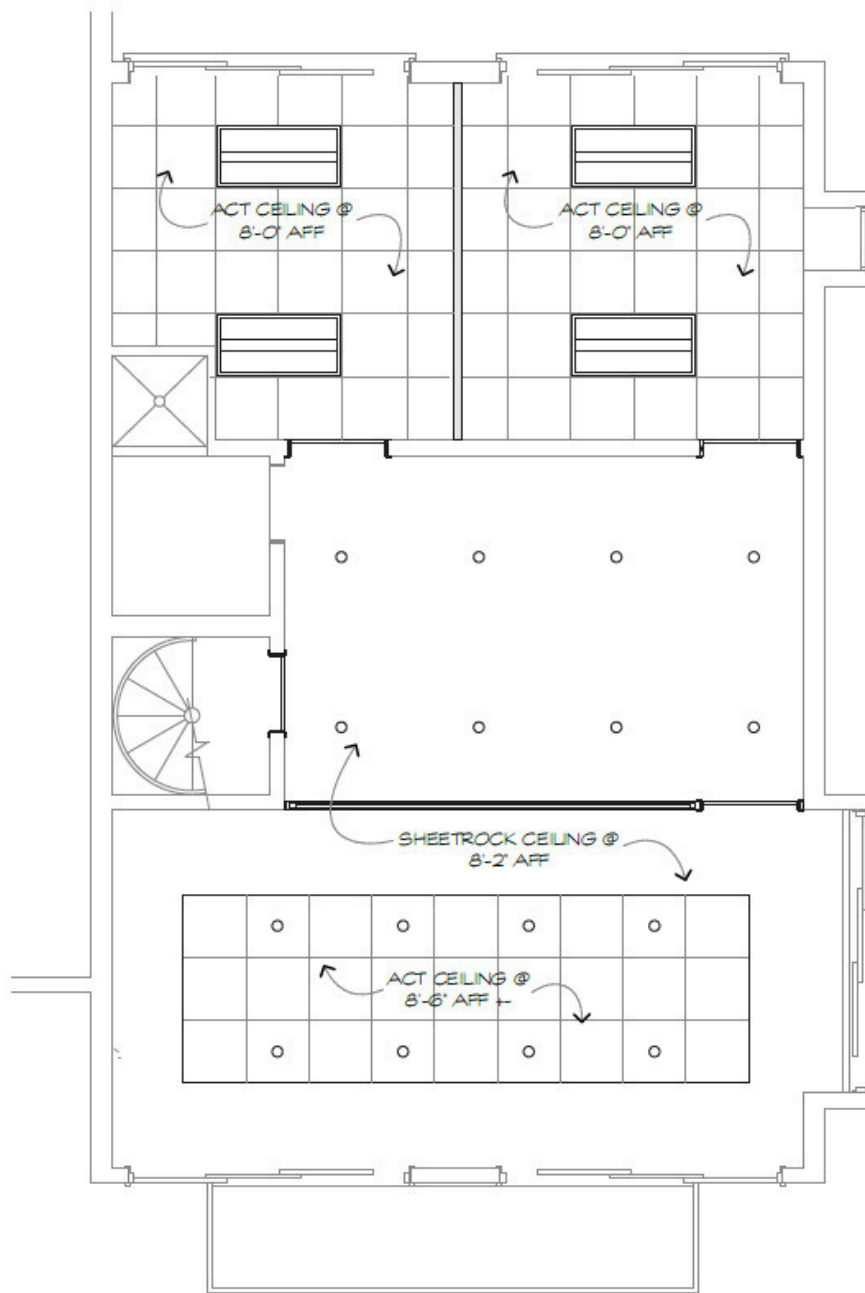


VM | REAL ESTATE

FOR LEASE

# FLOOR PLAN - 2ND FLOOR

1 CORPUS CHRISTI PLACE HILTON HEAD ISLAND, SC 29928



NEW SECOND FLOOR RCP

SCALE: 1/4" = 1'-0"

6  
A.1

SUZANNA ROSE MCDONALD

843.816.2547

SRM@vmrealestate.com

VM REAL ESTATE | 843.338.1799 | 39 PEARCE RD. BLUFFTON, SC 29910 | VMREALESTATE.COM

The information presented here is deemed to be accurate, but it has not been independently verified. We make no warranty or representation. It is your responsibility to independently confirm accuracy and completeness.



VM | REAL ESTATE



FOR LEASE

# PLANS & ADDITIONAL PHOTOS

1 CORPUS CHRISTI PLACE HILTON HEAD ISLAND, SC 29928



SUZANNA ROSE MCDONALD

843.816.2547

SRM@vmrealestate.com

VM REAL ESTATE | 843.338.1799 | 39 PEARCE RD. BLUFFTON, SC 29910 | VMREALESTATE.COM

The information presented here is deemed to be accurate, but it has not been independently verified. We make no warranty or representation. It is your responsibility to independently confirm accuracy and completeness.

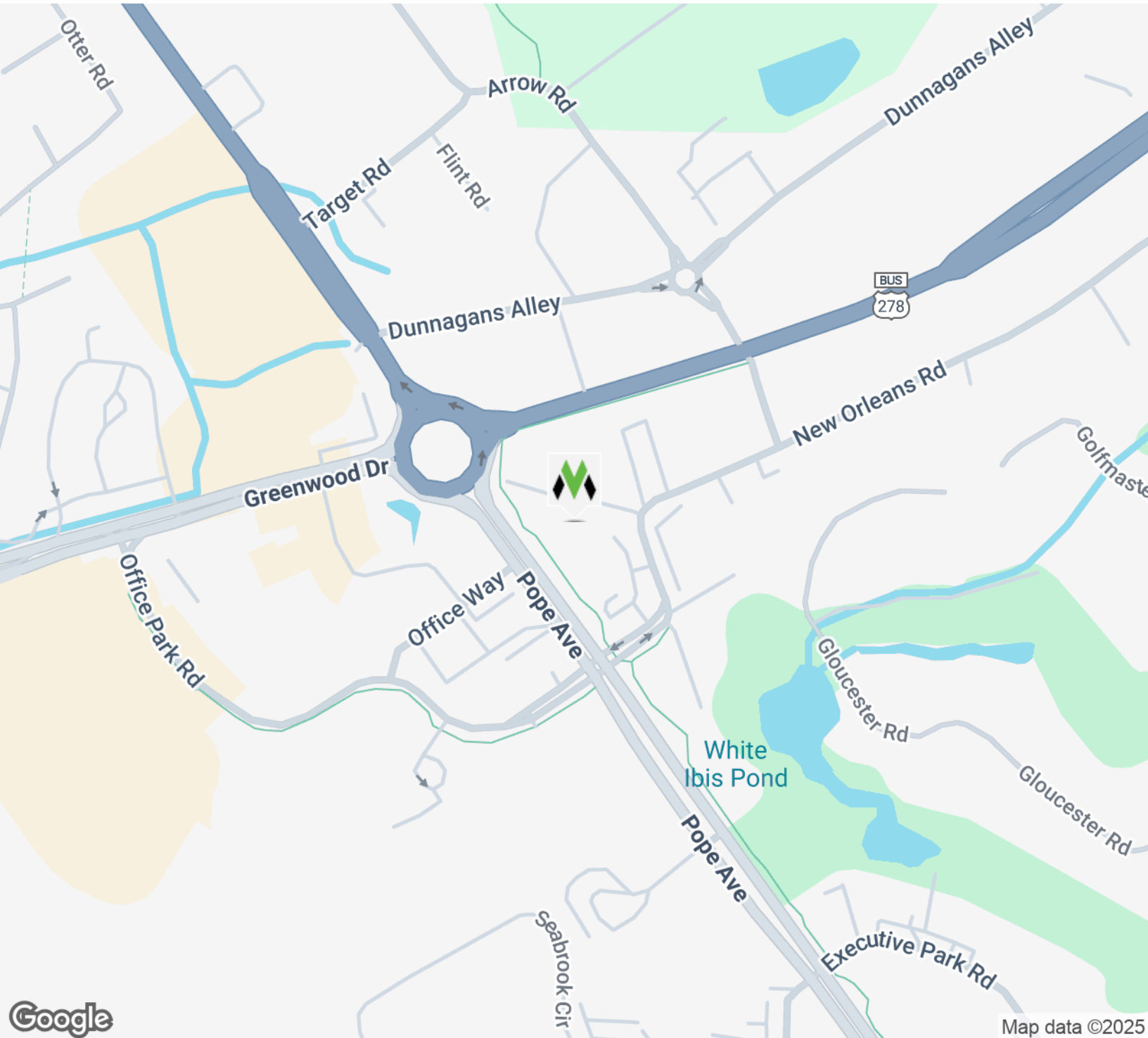


VM | REAL ESTATE

FOR LEASE

# LOCATION MAP

1 CORPUS CHRISTI PLACE HILTON HEAD ISLAND, SC 29928



**SUZANNA ROSE MCDONALD**

843.816.2547

SRM@vmrealestate.com

**VM REAL ESTATE** | 843.338.1799 | 39 PEARCE RD. BLUFFTON, SC 29910 | [VMREALESTATE.COM](http://VMREALESTATE.COM)

The information presented here is deemed to be accurate, but it has not been independently verified. We make no warranty or representation. It is your responsibility to independently confirm accuracy and completeness.



**VM** | REAL ESTATE 