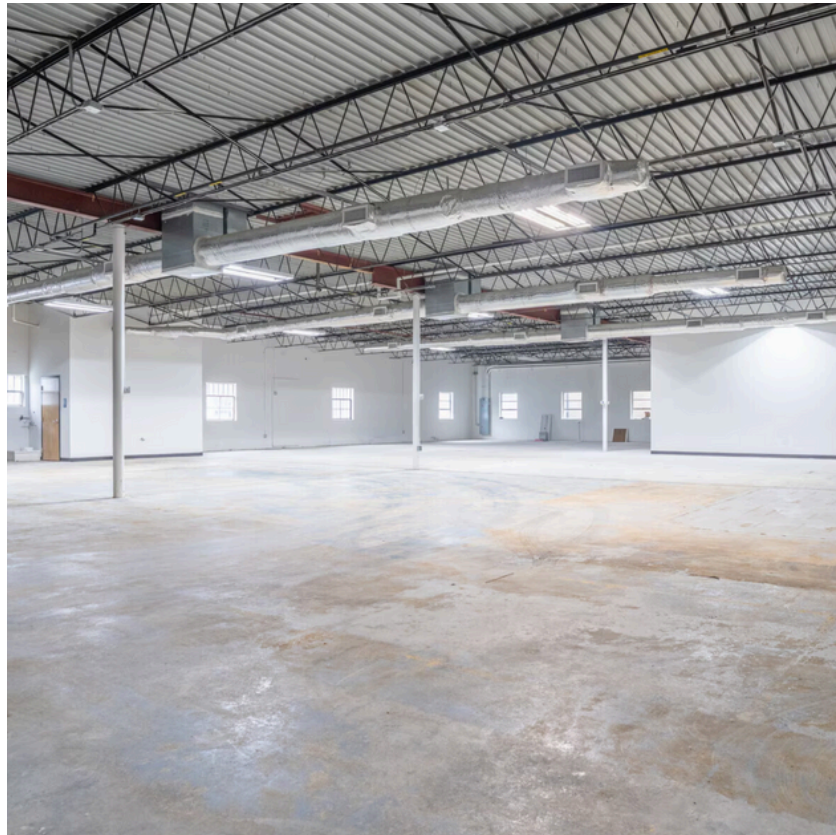


2132 JAMES JACKSON PARKWAY

FLEXIBLE INDUSTRIAL SPACES | HIGH VISIBILITY | PRIME LOCATION



- TURNKEY INDUSTRIAL UNIT WITH OFFICE SPACE
- FULL HVAC THROUGHOUT WAREHOUSE
- ONE (1) DRIVE-IN DOOR
- HIGH VISIBILITY ALONG JAMES JACKSON PARKWAY
- AMPLE SURFACE PARKING
- MINUTES FROM I-285 & I-75



For more information, please contact:

TREY WEGHORST

Office: (770) 264-9420
Cell: (404) 276-9314
tweghorst@apexindustrialre.com

ANDY HEAD

Office: (404) 595-1466
Cell: (404) 713-4601
ahead@apexindustrialre.com

OWNED & MANAGED BY:

