

LOCATIONS COMMERCIAL
REAL ESTATE

OFFICE & MEDICAL SPACE FOR LEASE

620 Foster Avenue, Brooklyn, NY 11230
Corner of Ocean Parkway & Foster Avenue

A Modern Space in a Prime Brooklyn Location
Bright, flexible, and built for business.



ELEVATE YOUR PRACTICE OR BUSINESS PRESENCE

Discover an exceptional leasing opportunity in the heart of Brooklyn. This impressive corner property features spacious floors ideal for medical or office tenants, enhanced by natural light, on-site parking, and excellent access to public transportation.



PROPERTY HIGHLIGHTS

Prime Location

Corner of Ocean Parkway & Foster Avenue

Convenient access to subway and bus lines

Available Space

2nd Floor: Built out as an Article 28 medical clinic

5th & 6th Floors: Ideal for office use

5,500 sq. ft. per floor

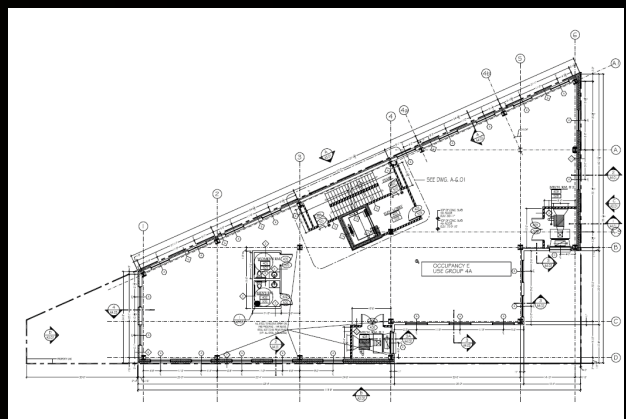
Possession arranged

Building Features

Modern construction with abundant natural light

On-site parking for tenants and visitors

Join Torah Umesorah – National Society for Hebrew Day Schools



ACCESSIBILITY & FLEXIBILITY

Situated in one of Brooklyn's most connected areas, 620 Foster Avenue is surrounded by essential services and amenities.

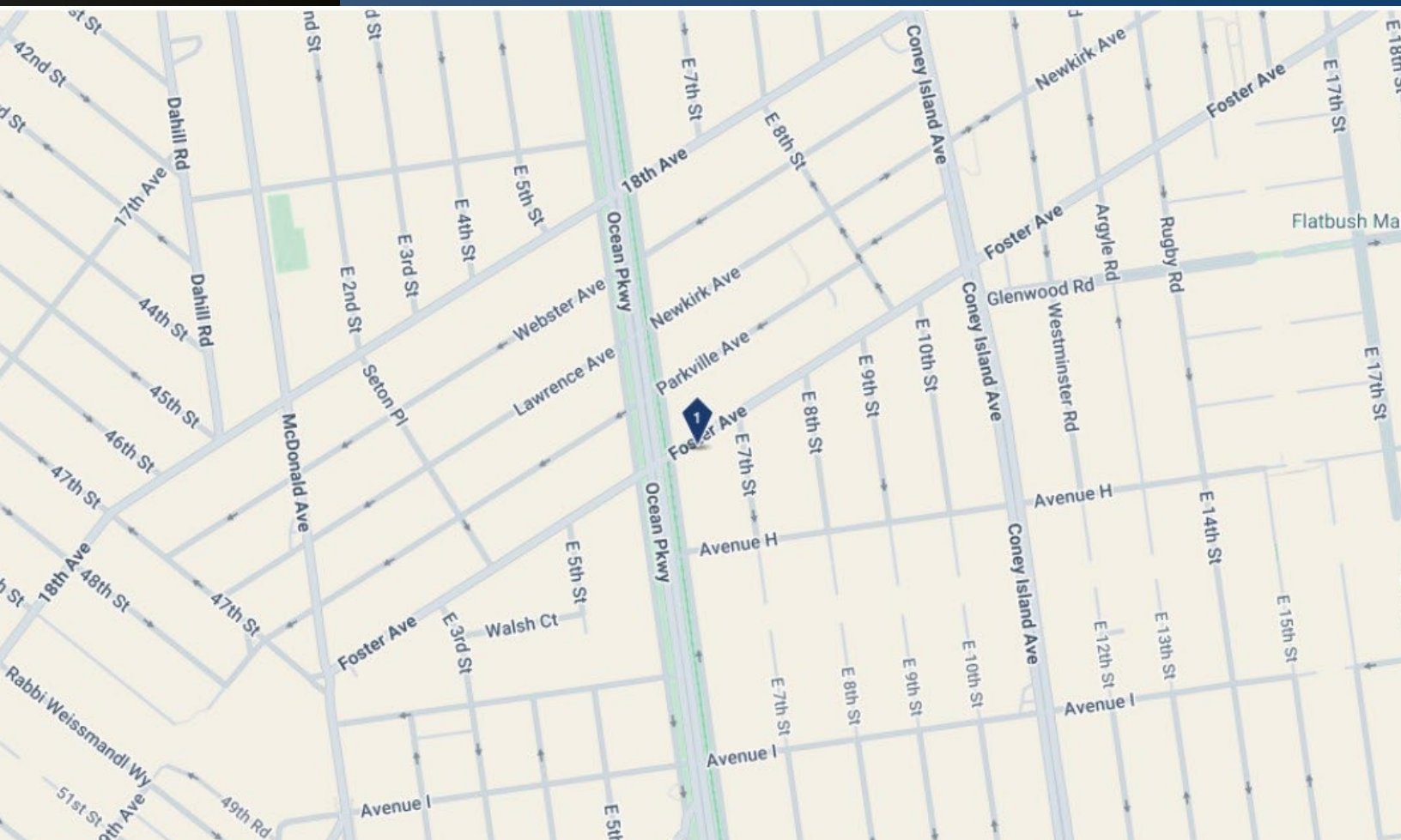
Steps from train and bus routes

Easily accessible to clients and staff

Flexible leasing options available to meet your business needs

IDEAL FOR:

- Medical Practices
- Professional Firms
- Administrative Offices
- Educational & Nonprofit Organizations



LOCATIONS COMMERCIAL REAL ESTATE

Contact Information

Nick Zweig

📍 3839 Flatlands Avenue, Brooklyn, NY 11234

☎ Tel: (718) 567-4960

📠 Fax: (718) 228-6767

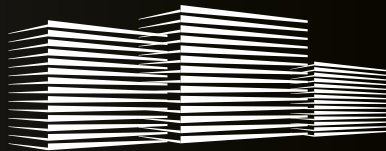
📱 Cell: (917) 804-4338

✉ nzweig@locationscre.com

🌐 locationscre.com

📍 **620 Foster Avenue, Brooklyn, NY 11230**

Prestigious space, prime location, endless potential.



LOCATIONS COMMERCIAL
REAL ESTATE

