

Summary

Available Space	Rate includes utilities, net of cleaning
2 exam rooms:	\$3000/month
1 exam and 1 procedure room:	\$3200/month
3 exam rooms:	\$4200/month
2 exam and 1 procedure room:	\$4500/month
3 exam and 1 procedure room:	\$5700/month

Property Highlights

- Join an experienced Dermatologist in Tyson's Corner
- New modern medical build out
- Various Space Options
- Shared use of waiting room and pantry
- Exam tables & locked storage provided in each room
- Private use of nurse's station with locked storage
- 12 – 24 month term options
- Average SF per Room is 120 SF

Demographics	2 Mile	5 Miles	10 Miles
Total Households:	17,723	88,375	484,780
Total Population:	41,587	233,255	1,237,862
Average HH Income	\$176,561	\$183,999	\$167,048

The information above was furnished to us by sources we believe to be reliable but no warranty or representation is made to its accuracy. It is your responsibility to independently confirm its accuracy and completeness. This offering is subject to correction or errors and omissions, change of pricing, prior to sale/lease or withdrawal from the market, without notice.

Ellie Bechtle
 703.435.4007 x 107
 ebechtle@veritycommercial.com

Ken Traenkle
 703.435.4007 x 102
 ktraenkle@veritycommercial.com

Photos

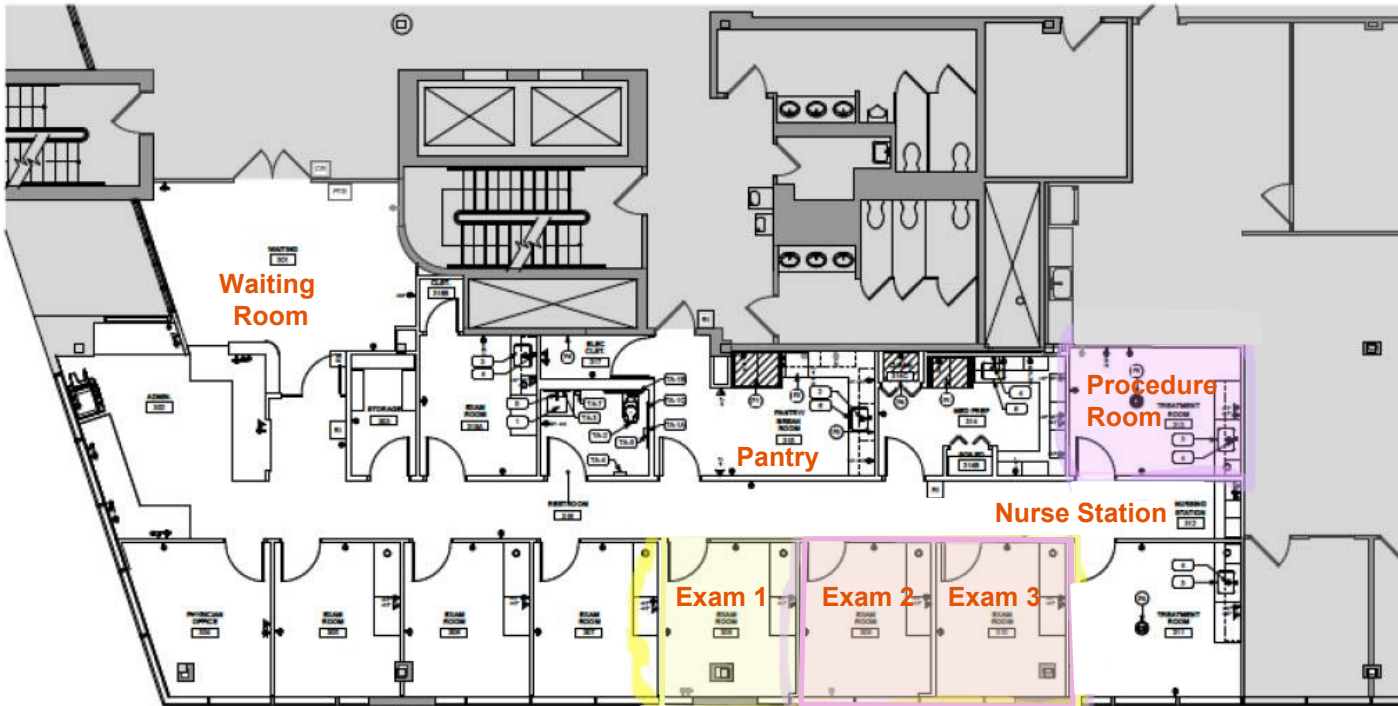


The information above was furnished to us by sources we believe to be reliable but no warranty or representation is made to its accuracy. It is your responsibility to independently confirm its accuracy and completeness. This offering is subject to correction or errors and omissions, change of pricing, prior to sale/lease or withdrawal from the market, without notice.

Ellie Bechtle
703.435.4007 x 107
ebechtle@veritycommercial.com

Ken Traenkle
703.435.4007 x 102
ktraenkle@veritycommercial.com

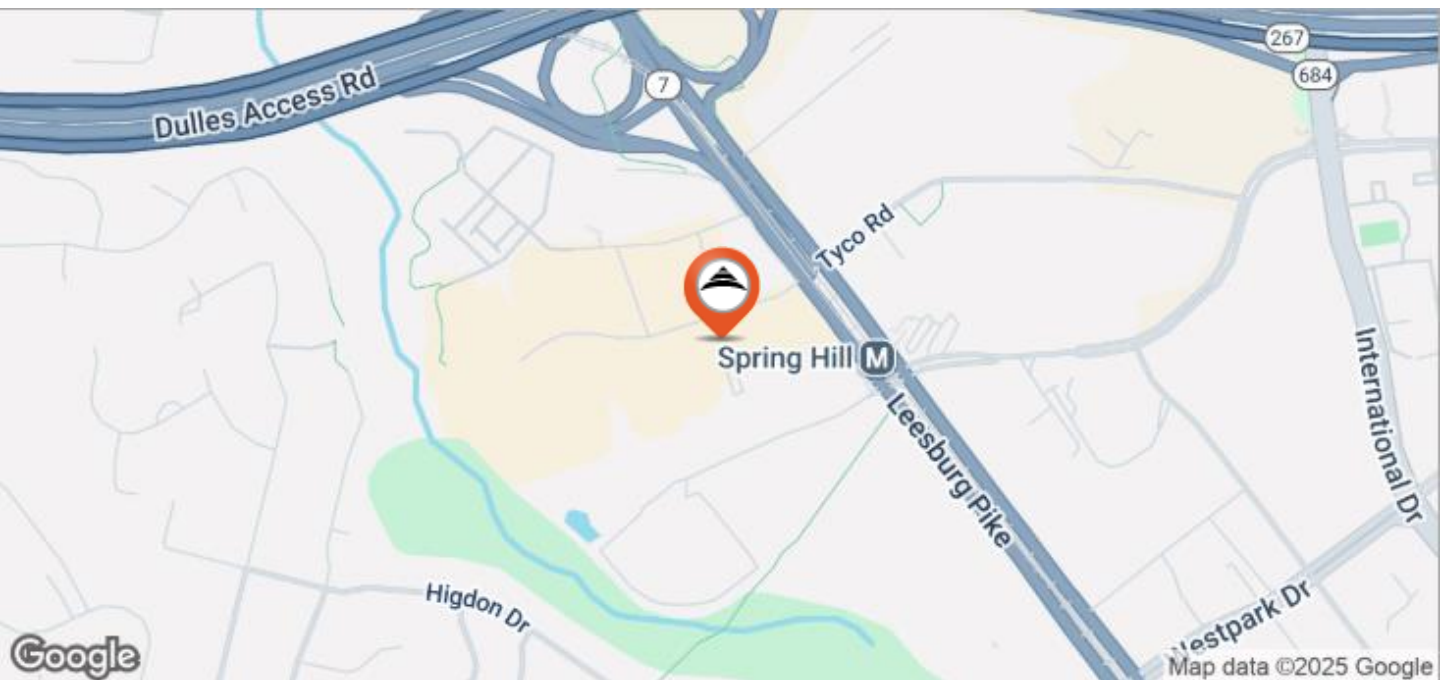
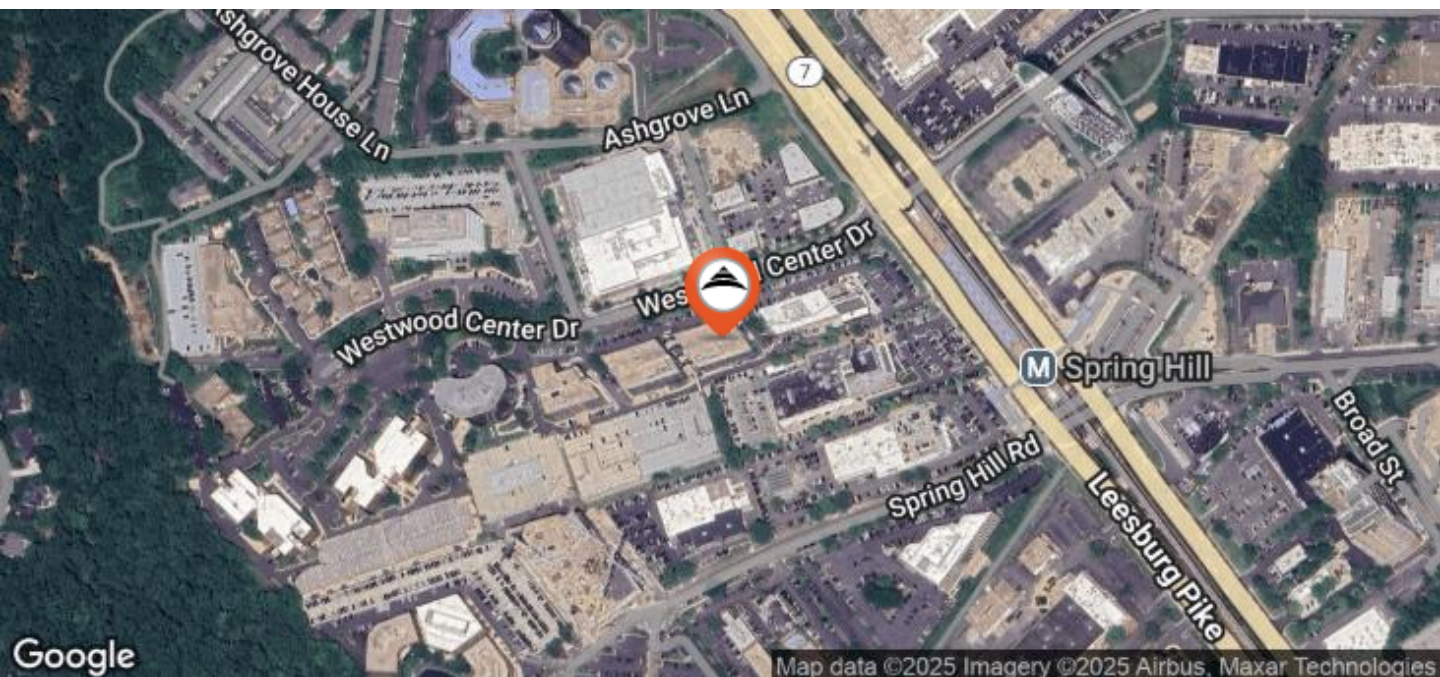
Floor Plan



The information above was furnished to us by sources we believe to be reliable but no warranty or representation is made to its accuracy. It is your responsibility to independently confirm its accuracy and completeness. This offering is subject to correction or errors and omissions, change of pricing, prior to sale/lease or withdrawal from the market, without notice.

Ellie Bechtle
 703.435.4007 x 107
 ebechtle@veritycommercial.com

Ken Traenkle
 703.435.4007 x 102
 ktraenkle@veritycommercial.com



Ellie Bechtle
703.435.4007 x 107
ebechtle@veritycommercial.com

Ken Traenkle
703.435.4007 x 102
ktraenkle@veritycommercial.com