



THE LITCHFIELD COMPANY REAL ESTATE

— COMMERCIAL —

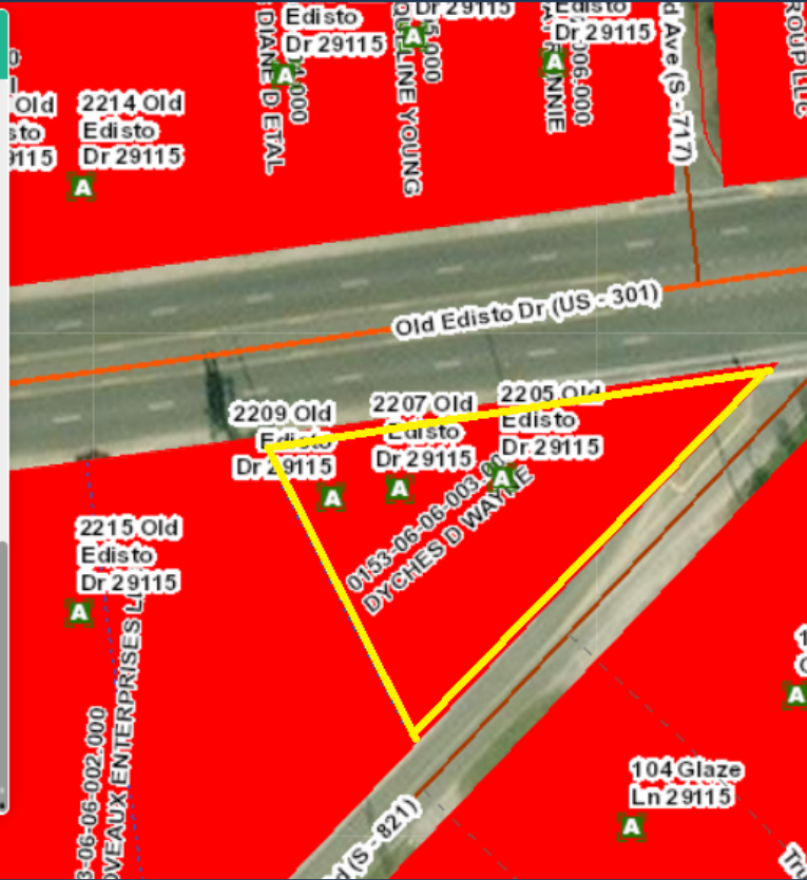
CORNER LOT FOR SALE

.43 Acre Lot 2205 Old Edisto Drive
\$39,900

Legend

Zoning

- BI - Business Industrial
- CG - Commercial General
- CN - Commercial Neighborhood
- FA - Forest and Agriculture
- NA - Area inside City Limits
- PUD - Planned Use District
- RC - Rural Community
- RG - Residential General
- RS - Residential Single-Family
- S - Streets
- Other



CALL FOR DETAILS

Cal Bruner

803-535-6208

calb@thelitchfieldcompany.com

Libby Bryant

803-535-6254

libbyb@thelitchfieldcompany.com

**Corner Lot located @ 2205 Old Edisto Drive in Orangeburg, SC
situated on 0.43+/- Acres.**

Features: +/-270' of Frontage on Old Edisto Drive

+/-274' Frontage on Tyler Street

Tax Map #: 0153-06-06-003.000.

