

1881

SIXTEENTH STREET, DENVER CO

36,537 SF AVAILABLE



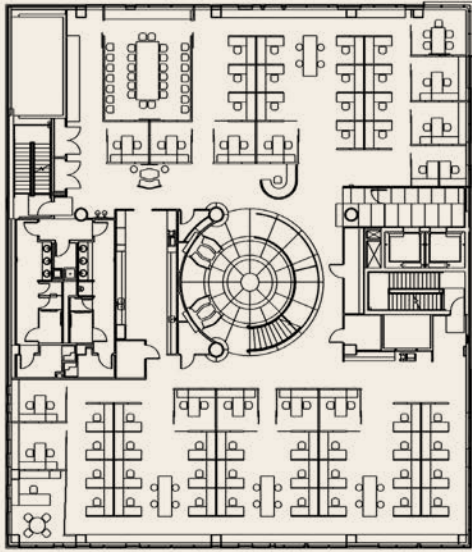
PROPERTY HIGHLIGHTS

- Full Building Available for Sublease
- Rare Headquarters Opportunity at Union Station
- Direct access to Union Station rail platform & 16th Street Free MallRide
- Prime LoDo location with numerous amenities within walking distance
- On-site restaurants on ground floor – Sunday Vinyl, Citizen Rail & Tavernetta
- Adjacent to the Limelight Hotel Denver and the Crawford Hotel

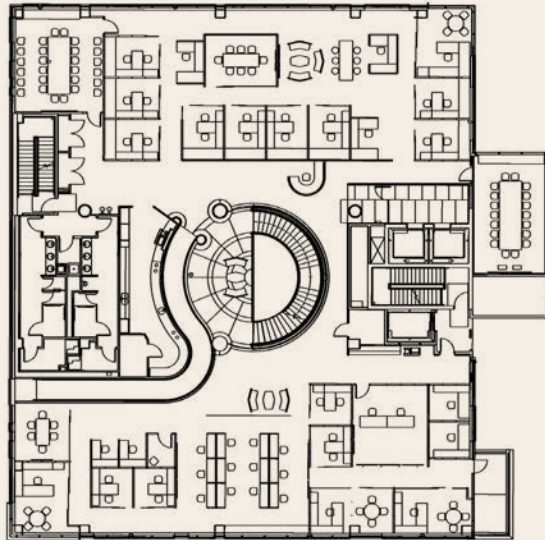
PROPERTY DETAILS

- **Available Size:** 36,537 SF – 3 Full Floors
- **Rate:** Negotiable
- Flexible Sublease terms
- **Building Class:** AA
- **Year Built:** 2017
- **Parking:** 1.25/1,000 SF (secure underground garage with ±100 visitor parking spaces)
- **Furniture:** Available





FLOOR 2 11,848 SF

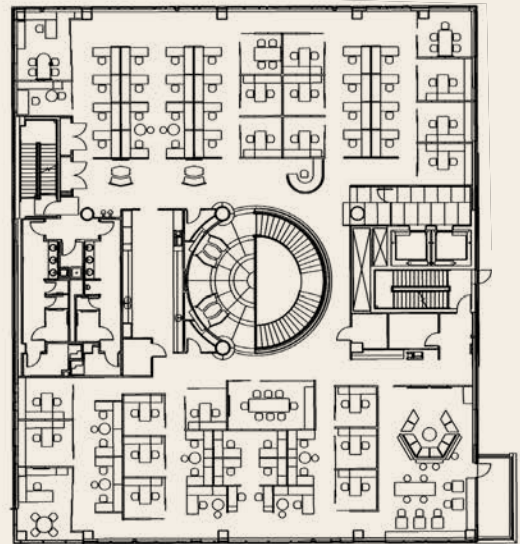


FLOOR 3 12,496 SF

TODD WHEELER
Vice Chairman
+1 303 813 6441
todd.wheeler@cushwake.com

1881

SIXTEENTH STREET
DENVER, COLORADO



FLOOR 4 12,193 SF

MICHAEL COPPOLA
Senior Associate
+1 303 312 4212
michael.coppola@cushwake.com

