

LA LOMA BUSINESS PARK

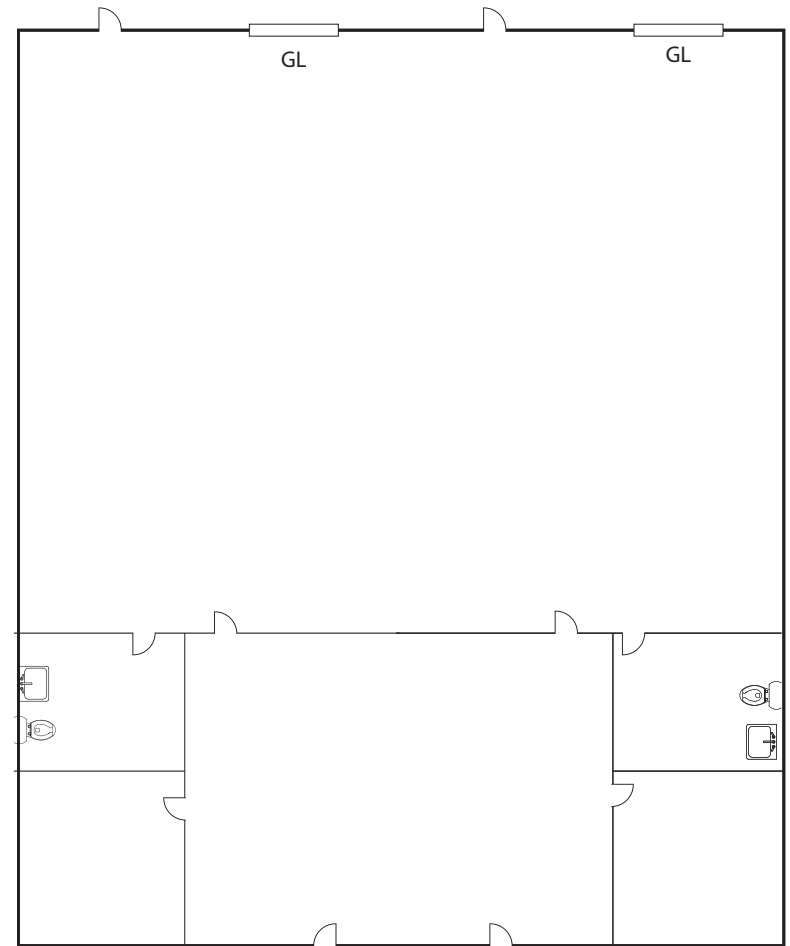
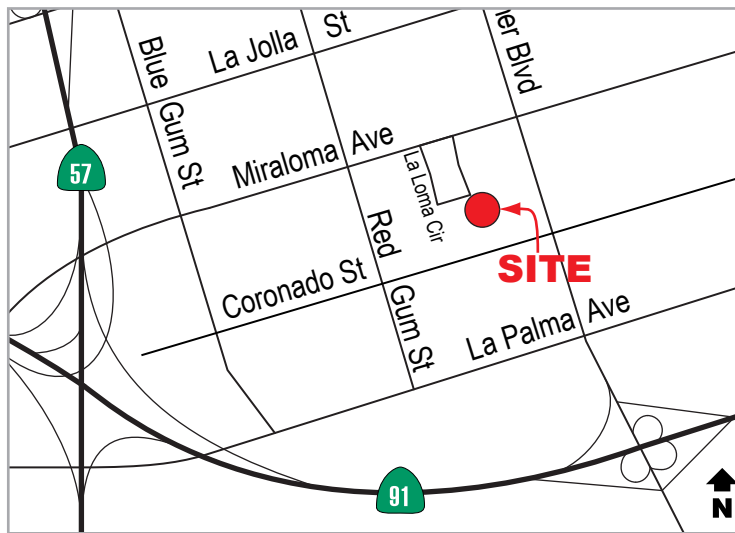
1254-1256 LA LOMA CIRCLE
ANAHEIM, CA

FOR LEASE - 3,168 SF



PROPERTY DESCRIPTION

- ±3,168 SF Unit
- ±800 SF of Office Space
- 100 Amp of Power
- 14' Warehouse Clear Height
- 2 Ground Level Loading Doors
- Fire Sprinklered
- Low City of Anaheim Utility Costs
- Excellent Location in East Anaheim
- Excellent Access to Riverside (91), Orange (57) & Costa Mesa (55) Freeways



Site Plan Not to Scale

MICHAEL ZEHNER
 Senior Vice President
 714.935.2328
 mczehner@voitco.com
 Lic#01917963

REED RUTTER
 Senior Associate
 949.933.5744
 rrutter@voitco.com
 Lic#02153762

Voit
 REAL ESTATE SERVICES

ZEHNER HILL
 INDUSTRIAL GROUP