



For Sublease

Caldwell Medical Arts Building

1818 S. 10th Avenue, Suite 220 | Caldwell, ID

Highlights

- Medical office space available for immediate occupancy
- Former Ophthalmology Office, however space can accommodate many other medical uses
- Located near West Valley Medical Caldwell Campus
- Neighbors include: Caldwell Physical Therapy, Idaho Arthritis Center, Evergreen Prosthetics, and the Allergy Group
- Flexible terms available
- Prime lease termination 10/31/2027

Space Available

Suite	Size	Rate
220	2,512 SF	\$15.50/SF/YR NNN
Estimated NNN's: ±\$5.78/SF/YR (includes utilities)		

Contact Us

Scott Feighner
 208 861 4812
 scott.feighner@colliers.com

Mike Peña
 208 472 1666
 mike.pena@colliers.com

For Sublease

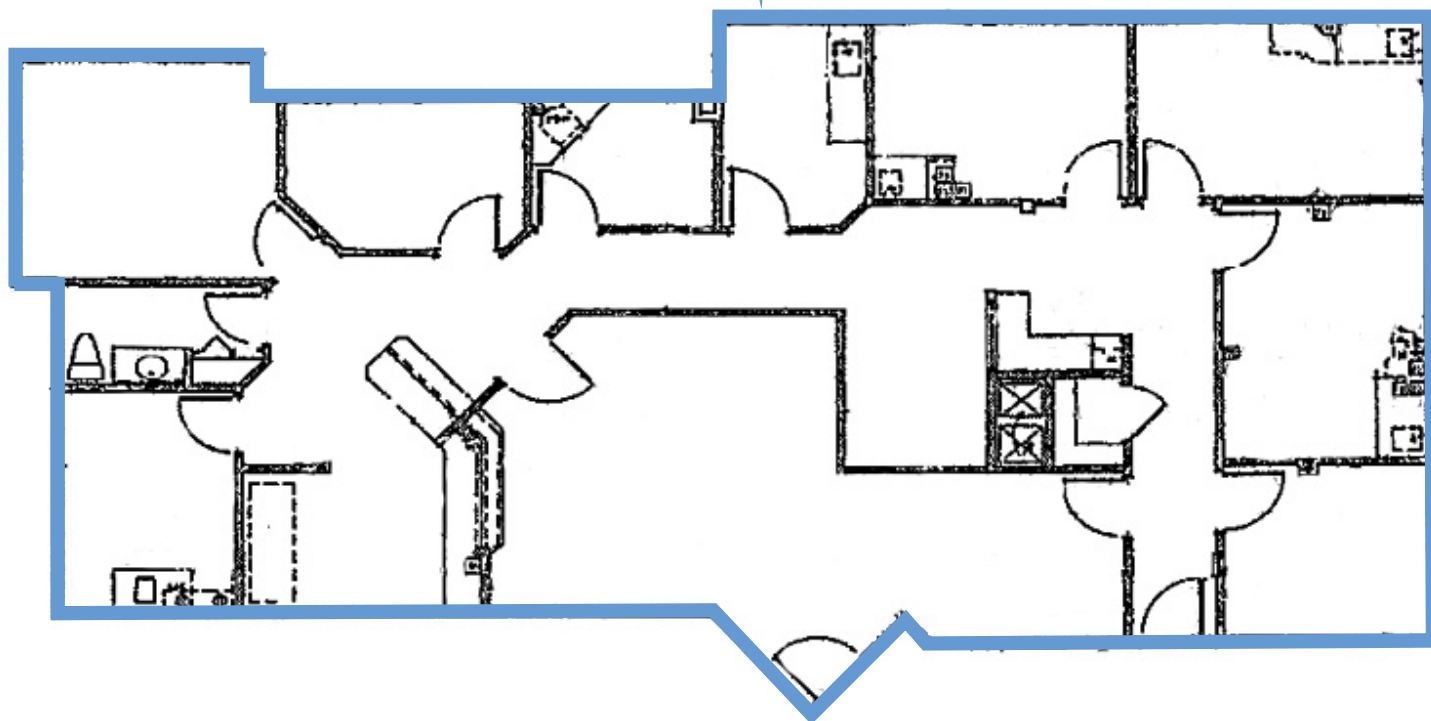
Property Information

Property Type	Office - Medical
Building Size	19,167 SF
Space Available	2,512 SF
Lease Rate	15.50/SF/YR
Estimated NNN's	±\$5.78/SF/YR (includes utilities)



Floor Plan

Suite 220 | 2,512 SF



Scott Feighner
208 861 4812
scott.feighner@colliers.com

Mike Peña
208 472 1666
mike.pena@colliers.com

Colliers

Property Gallery



Scott Feighner
208 861 4812
scott.feighner@colliers.com

Mike Peña
208 472 1666
mike.pena@colliers.com



