

FOR LEASE



1580 VALLEY RIVER DRIVE - EUGENE, OR

VALLEY RIVER OFFICE PARK SUITE

- PREMIER OFFICE ADDRESS IN A PARK-LIKE SETTING
- AVAILABLE: SUITE 290 - 3,639 RSF
- GREAT AMENITIES BEING NEXT TO VALLEY RIVER CENTER
- AMPLE FREE PARKING
- EASY ACCESS TO HIGHWAYS AND DOWNTOWN EUGENE

Lease Rate: \$1.85/SF - FULL SERVICE



For more information contact:

TIM CAMPBELL

timc@campbellre.com | (541) 484-2214

Licensed in the State of Oregon

BILL NEWLAND

bill@campbellre.com | (541) 484-2214

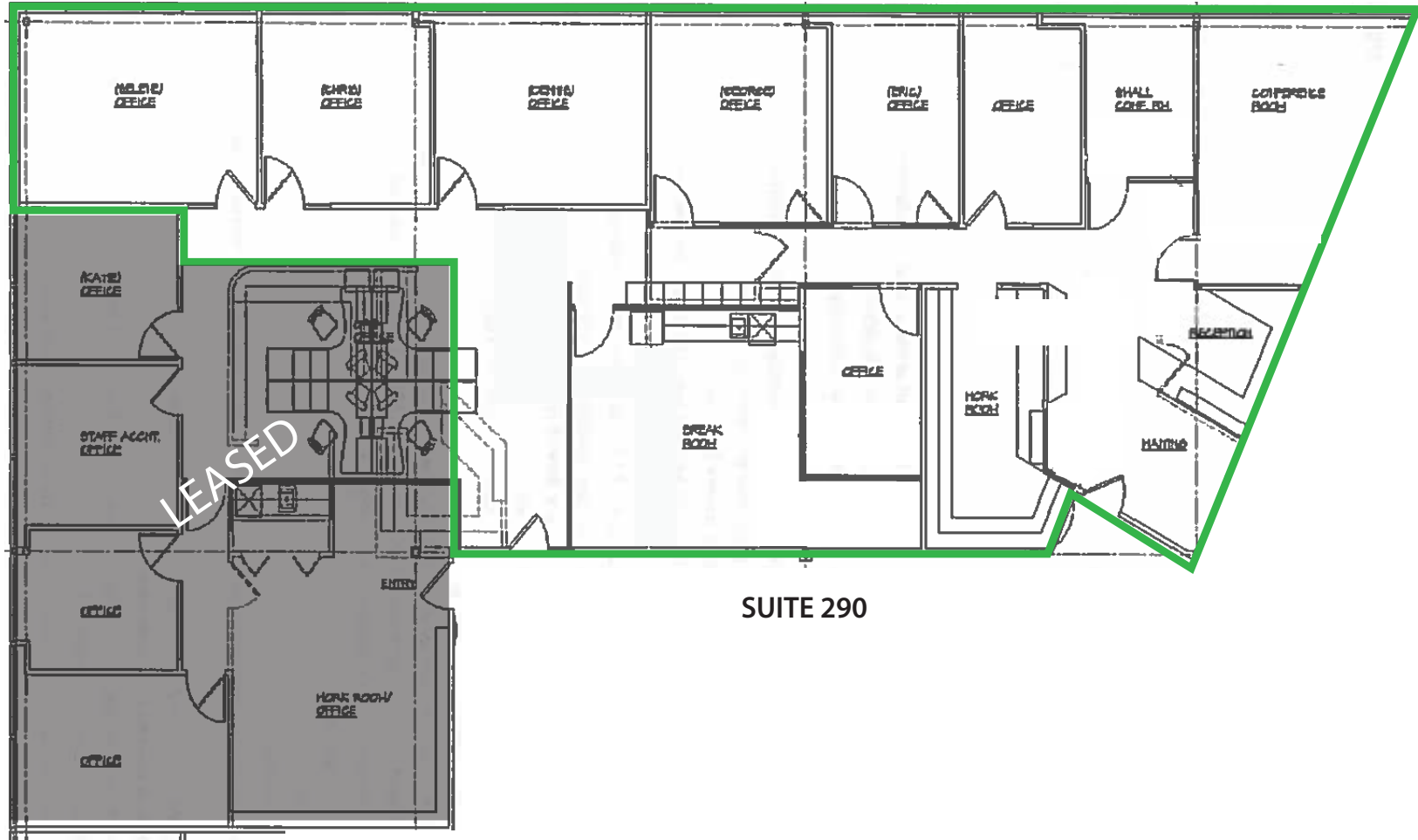
Licensed in the State of Oregon

The information in this package was obtained from sources deemed reliable, and is not guaranteed by agent. Package is subject to change, error or omission, prior sale or lease, correction or withdrawal. Any party contemplating purchase is urged to conduct their own independent study and inspection.

1580 VALLEY RIVER DRIVE (Second Floor)

AVAILABLE SUITES:

- SUITE 290 - 3,639 RSF
- LEASE RATE: \$1.85/SF FULL SERVICE



SUITE 290

The information in this package was obtained from sources deemed reliable, and is not guaranteed by agent. Package is subject to change, error or omission, prior sale or lease, correction or withdrawal. Any party contemplating purchase is urged to conduct their own independent study and inspection.

1580 VALLEY RIVER DRIVE



The information in this package was obtained from sources deemed reliable, and is not guaranteed by agent. Package is subject to change, error or omission, prior sale or lease, correction or withdrawal. Any party contemplating purchase is urged to conduct their own independent study and inspection.

AERIAL TENANT MAP



The information in this package was obtained from sources deemed reliable, and is not guaranteed by agent. Package is subject to change, error or omission, prior sale or lease, correction or withdrawal. Any party contemplating purchase is urged to conduct their own independent study and inspection.