

Boardwalk Plaza Office Building

9725 SW BEAVERTON HILLSDALE HWY, BEAVERTON, OR 970053341



Charles Haselwood
503.515.6959
charles@macadamforbes.com
Licensed in OR



VIDEO TOUR

2 Centerpointe Drive, Suite 500 | Lake Oswego, OR 97035 | WWW.MACADAMFORBES.COM | 503.227.2500

All of the information contained herein was obtained either from the owner or other parties we consider reliable. We have no reason to doubt its accuracy, however we do not guarantee it.

FOR LEASE

 **MACADAM
FORBES**
COMMERCIAL REAL ESTATE SERVICES

FOR LEASE

9725 SW Beaverton Hillsdale Hwy, Beaverton, OR 970053341

PROPERTY DESCRIPTION

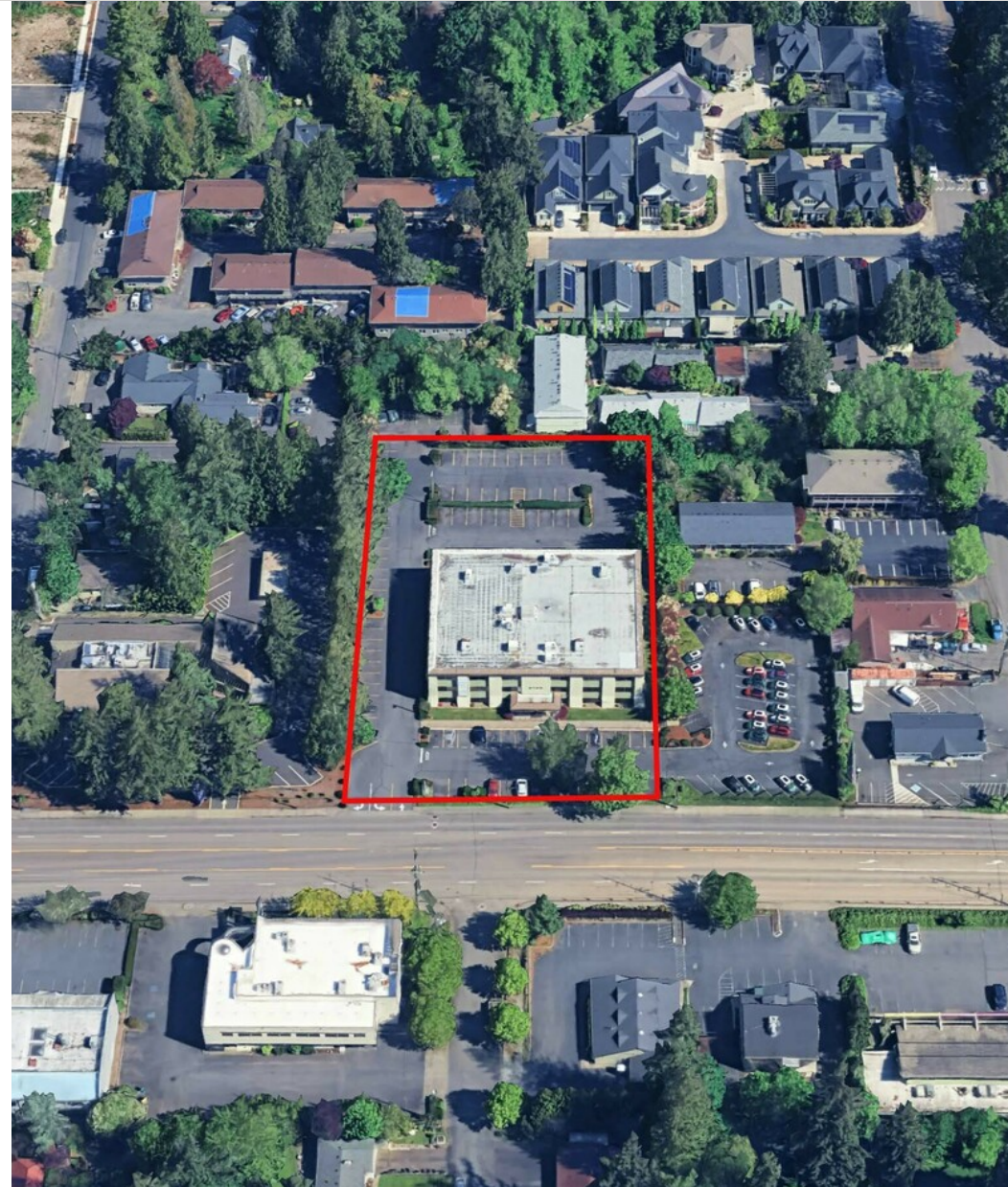
The Boardwalk Plaza Building is in a sought-after location and presents an exciting opportunity for businesses to thrive in Beaverton's rapidly growing community. It is an ideal choice for those seeking a well-connected office space. Owner to pay full co-broker fee!

PROPERTY HIGHLIGHTS

- Professionally managed by responsive local Owner
- Generous parking ratio for tenants and visitors
- Recycling services available on every floor
- Full-service lease with competitive rates
- Mix of suite sizes with private offices and open space
- Executive Suites in Suite 210 include shared, private kitchen and reception area
- High visible location with signage opportunities
- Surrounded by retail, dining and other service amenities
- Easy access to Hwy 217 and downtown Portland

OFFERING SUMMARY

Lease Type:	Full Service
Available SF:	236 - 1,986 SF
Building Size:	38,777 SF
Parking Ratio:	4/1000 SF of Area Leased



Charles Haselwood
503.515.6959
charles@macadamforbes.com
Licensed in OR

FOR LEASE

9725 SW Beaverton Hillsdale Hwy, Beaverton, OR 970053341



SPACES	LEASE RATE	SPACE SIZE
Suite 210B	\$575 per month	236 SF
Suite 210C	\$19.50 SF/yr	1,046 SF
Suite 212	\$19.50 SF/yr	1,990 SF



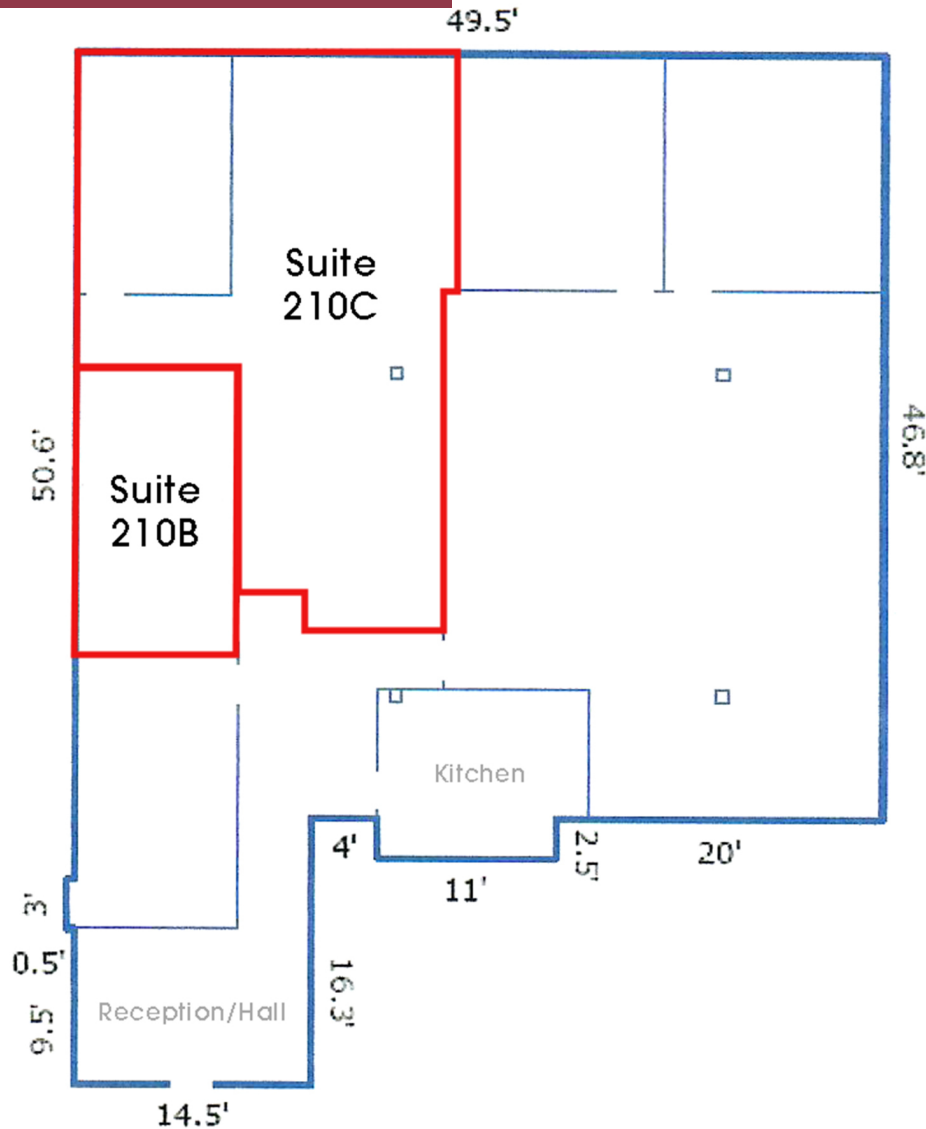
Charles Haselwood
503.515.6959
charles@macadamforbes.com
Licensed in OR

All of the information contained herein was obtained either from the owner or other parties we consider reliable. We have no reason to doubt its accuracy, however we do not guarantee it.

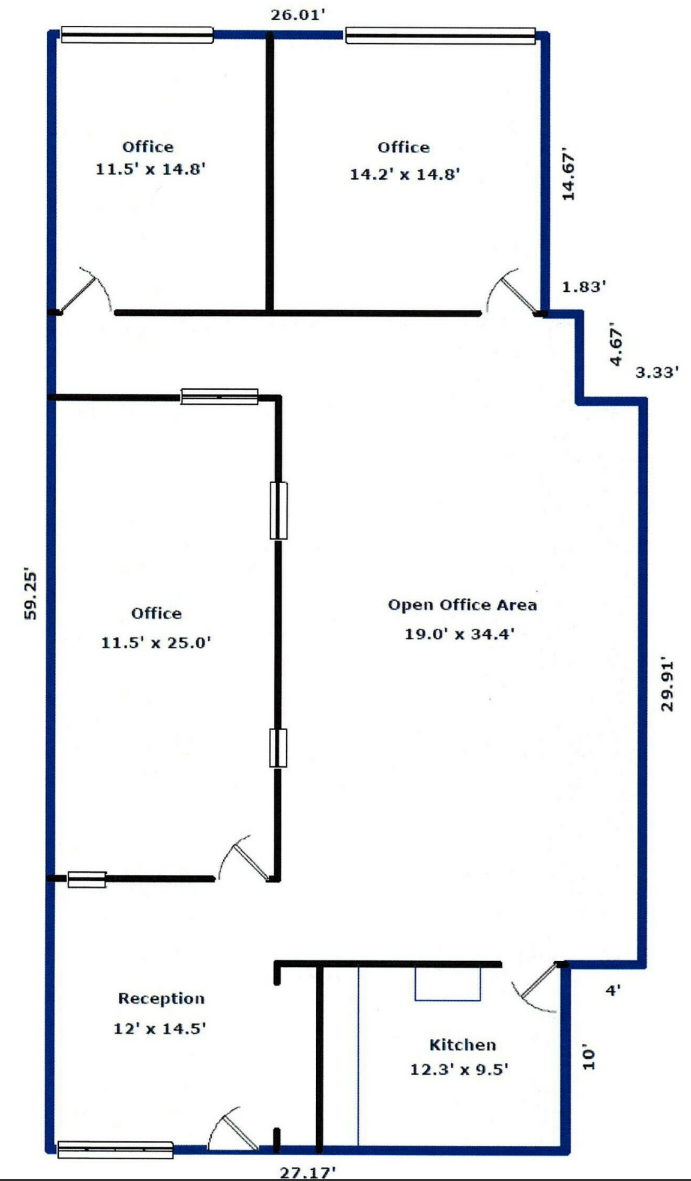
MACADAMFORBES.COM | 503.227.2500

FOR LEASE

9725 SW Beaverton Hillsdale Hwy, Beaverton, OR 970053341



Suite 210 (Suites B & C)



Suite 212



Charles Haselwood
503.515.6959
charles@macadamforbes.com
Licensed in OR

All of the information contained herein was obtained either from the owner or other parties we consider reliable. We have no reason to doubt its accuracy, however we do not guarantee it.

MACADAMFORBES.COM | 503.227.2500

FOR LEASE

9725 SW Beaverton Hillsdale Hwy, Beaverton, OR 970053341



Charles Haselwood
503.515.6959
charles@macadamforbes.com
Licensed in OR

All of the information contained herein was obtained either from the owner or other parties we consider reliable. We have no reason to doubt its accuracy, however we do not guarantee it.

MACADAMFORBES.COM | 503.227.2500