

**+/- 33,000 SF
FOR LEASE**

401 E Fourth St,
Bridgeport, PA 19405



- **14' Ceiling Height**
- **20' x 22' Column Spacing**
- **Great Location; Central to Greater Philadelphia**
- **Abundance of Parking**
- **Modernized Freight Elevator**
- **On-Site Management**
- **24-Hour Access**

FOR MORE INFORMATION:

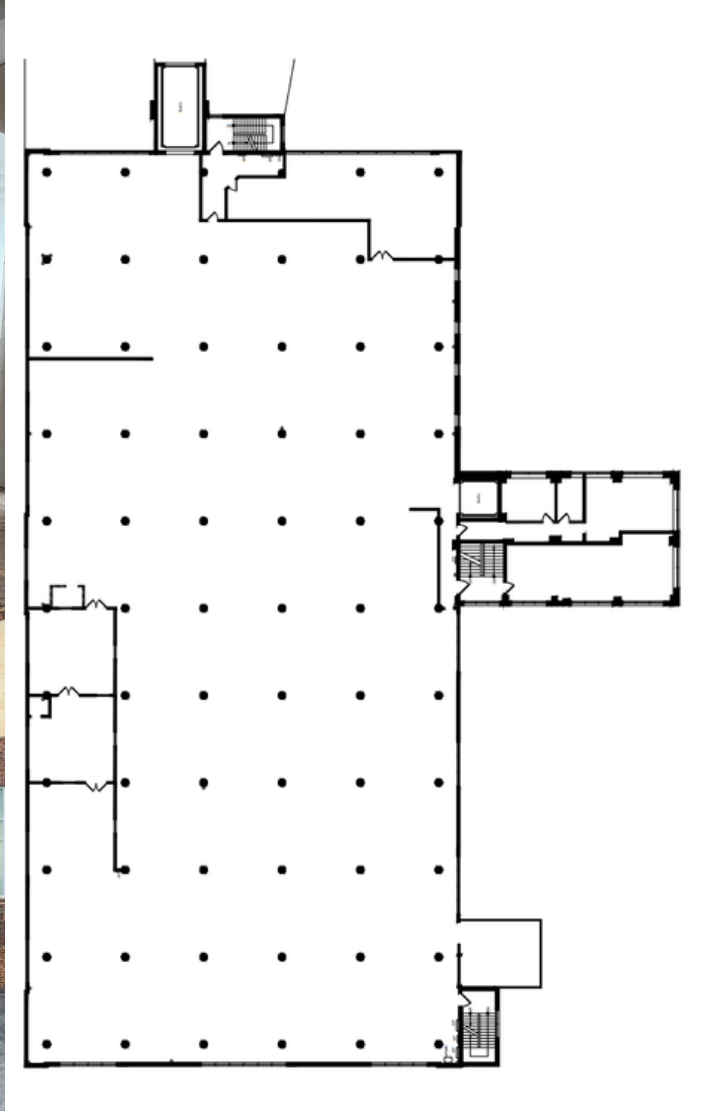
**ALEX FEINBERG
(610) 667-2787**

ALEX@PENDELRE.COM

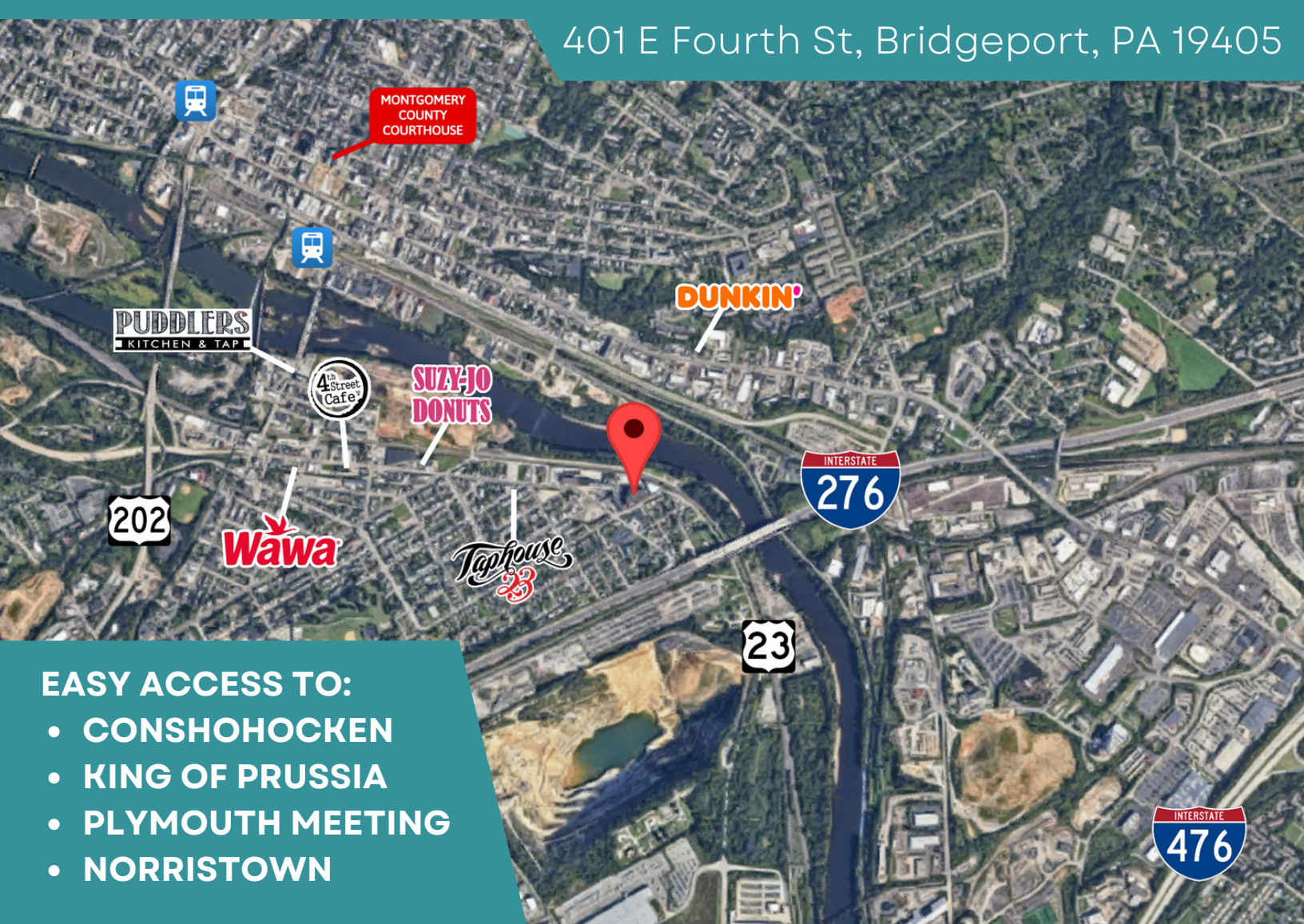
**401 E FOURTH ST
BUILDING #15
BRIDGEPORT, PA 19405**



401 E Fourth St, Bridgeport, PA 19405



401 E Fourth St, Bridgeport, PA 19405



EASY ACCESS TO:

- CONSHOHOCKEN
- KING OF PRUSSIA
- PLYMOUTH MEETING
- NORRISTOWN



Pendelrealstate.com
Phone: (610) 667-2787
Fax: (610) 667-2977

401 E 4th St Building #15, Bridgeport, PA 19405