

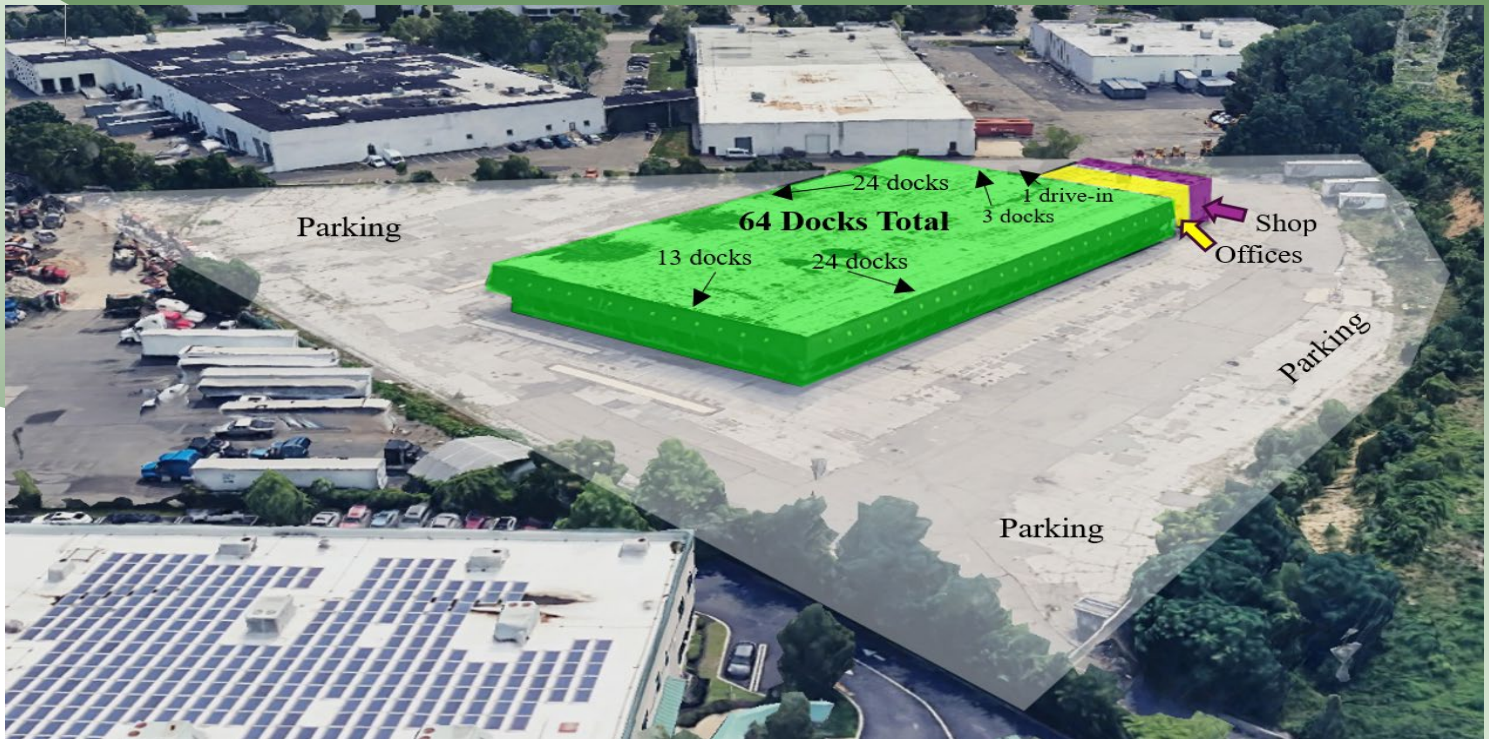
Location

Location

Location

Available | Cross-dock
1 Imperatore Dr, Old Bethpage, NY

Divisible



Location: Long Island (Old Bethpage)
Doors: 64 (exterior)
Office: 5,500 sq. ft. +/-
Height: 16' +/-
Acres: 8.20 +/-
Building: 48,140 sq. ft. +/-
Dock: 151' x 266' +/-
Shop: 1,800 sq. ft. +/- 1-bay (2 door drive-thru)
Yard: Paved, fenced & lighted

Located just 2.5 miles from the Long Island Expressway this property offer easy access to NYC & all points east and west on Long Island.

This property is divisible

How many doors do you need?
How much yard do you need?

Ramp to drive onto the dock

Extra Parking: Additional 10 acres available (divisible).

Available for Lease or Sale

METRO

REALTY SERVICES LLC

201 Moreland Road, Ste 4, Hauppauge, NY 11788

(631) 770-0700 ~ info@metrorealtyservices.com

www.metrorealtyservices.com

Exclusive Agent:

Mark Timpone, Managing Partner

Licensed Real Estate Broker

Direct: [\(516\) 375-8069](tel:5163758069)

mark@metrorealtyservices.com

Modified: 2/5/2026

All information submitted is subject to errors, omissions, change of price or rental, change of other terms and conditions, prior sale, lease, financing or withdrawal without notice. All areas and dimensions are approximate. This advertisement does not suggest that the broker has a listing on this property or properties or that any property is currently available.