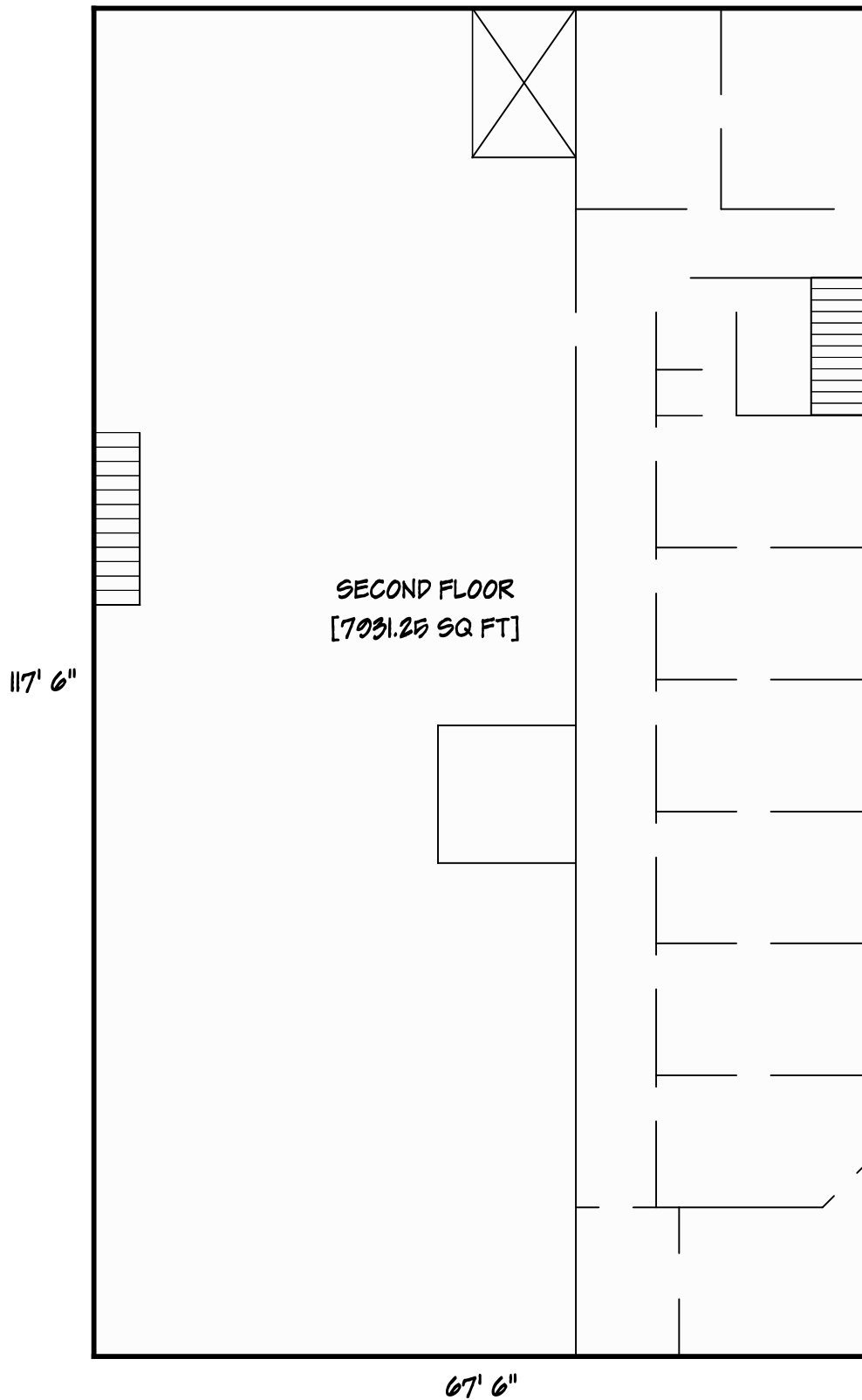
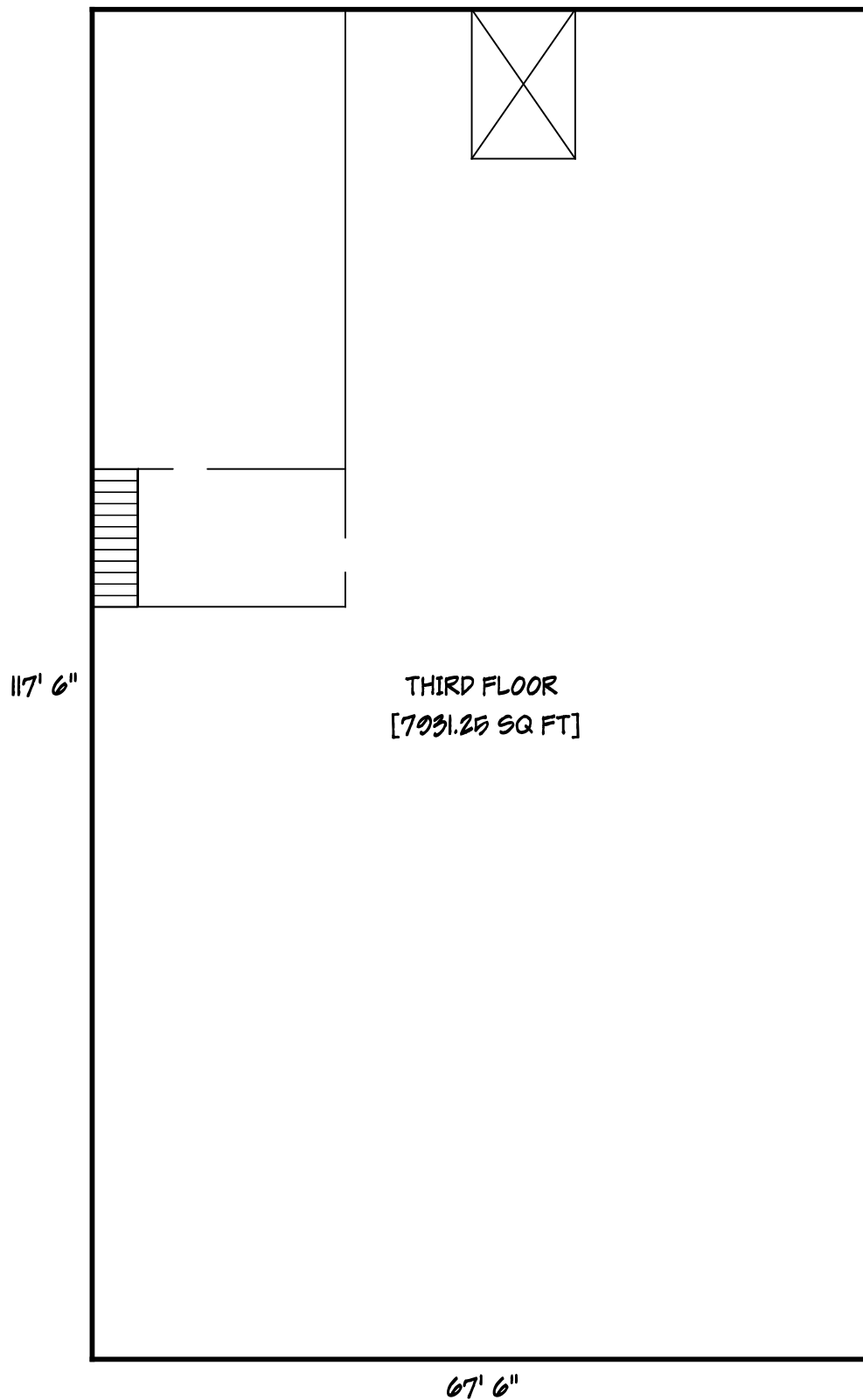


* ABOVE THE ENTRY IS A 13' 6" X 42' LOFT WITH A CEILING HEIGHT OF 6' 6"





Area Calculations Summary

Living Area		Calculation Details	
First Floor	1116.56 Sq ft	25.5×39.11	= 997.33
		6×15.61	= 93.67
		$0.5 \times 6 \times 6$	= 18
		$0.5 \times 3.89 \times 3.89$	= 7.56
First Floor	6524.25 Sq ft	15.5×13.5	= 209.25
		14.83×13.5	= 200.25
		42×35.5	= 1491
		68.5×67.5	= 4623.75
Second Floor	7931.25 Sq ft	117.5×67.5	= 7931.25
Third Floor	7931.25 Sq ft	67.5×117.5	= 7931.25
Total Living Area (Rounded):		23503 Sq ft	