

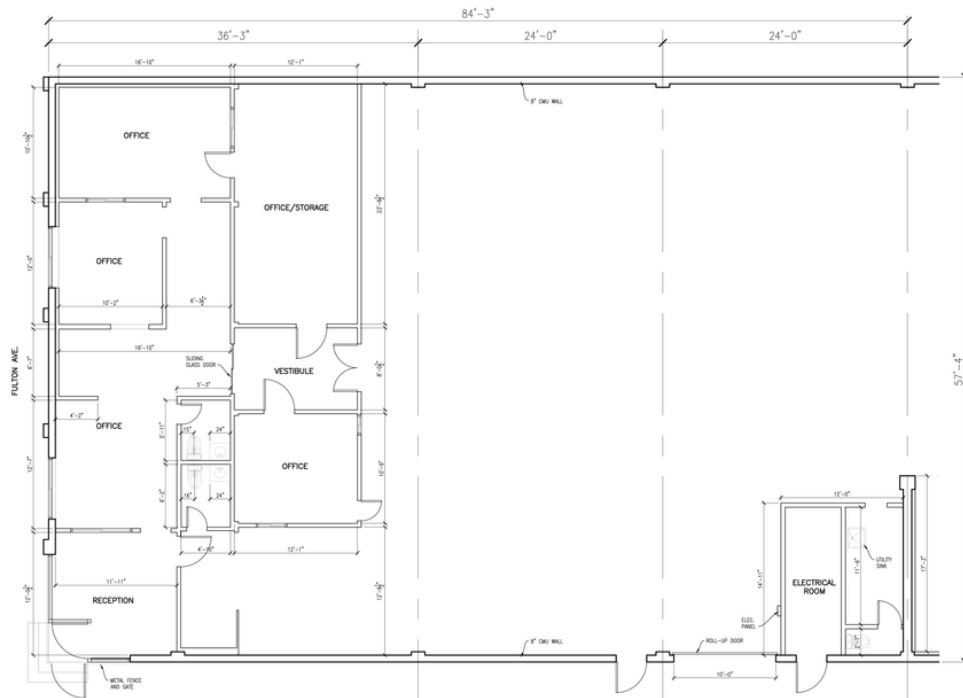
Available SF 4,875 SF Industrial For Lease Building Size 13,210 SF



Address: 7300 Fulton Ave, North Hollywood, CA 91605
Cross Streets: Fulton Ave/Sherman Way

Small Industrial/Flex Unit
 Great For a Variety of Light Industrial/Flex or Commercial Uses
 Part of a Multi-Tenant Industrial Park
 Good Parking at 2/1,000
 Great San Fernando Valley Location

Lease Rate/Mo:	\$7,555	Sprinklered:	No	Office SF / #:	1,250 SF / 4
Lease Rate/SF:	\$1.55	Clear Height:	12'	Restrooms:	2
Lease Type:	Gross / Op. Ex: \$0.15	GL Doors/Dim:	1 / 8'x10'	Office HVAC:	Heat & AC
Available SF:	4,875 SF	DH Doors/Dim:	0	Finished Ofc Mezz:	0 SF
Minimum SF:	4,875 SF	A: 200 V: 120/240 O: 3 W: 3		Include In Available:	No
Prop Lot Size:	POL	Construction Type:		Unfinished Mezz:	0 SF
Term:	2-5 Years	Const Status/Year Blt:	Existing / 1970	Include In Available:	No
Sale Price:	NFS	Whse HVAC:	Yes	Possession:	Now
Sale Price/SF:	NFS	Parking Spaces: 10 / Ratio: 2.1:1/		Vacant:	Yes
Taxes:		Rail Service:	No	To Show:	Call broker
Yard:	Fenced/Paved	Specific Use:	Warehouse/Office	Market/Submarket:	East SFV
Zoning:	M2-1	Listing Date:	10/17/2024	APN#:	2327002014
Listing #:	41283775				



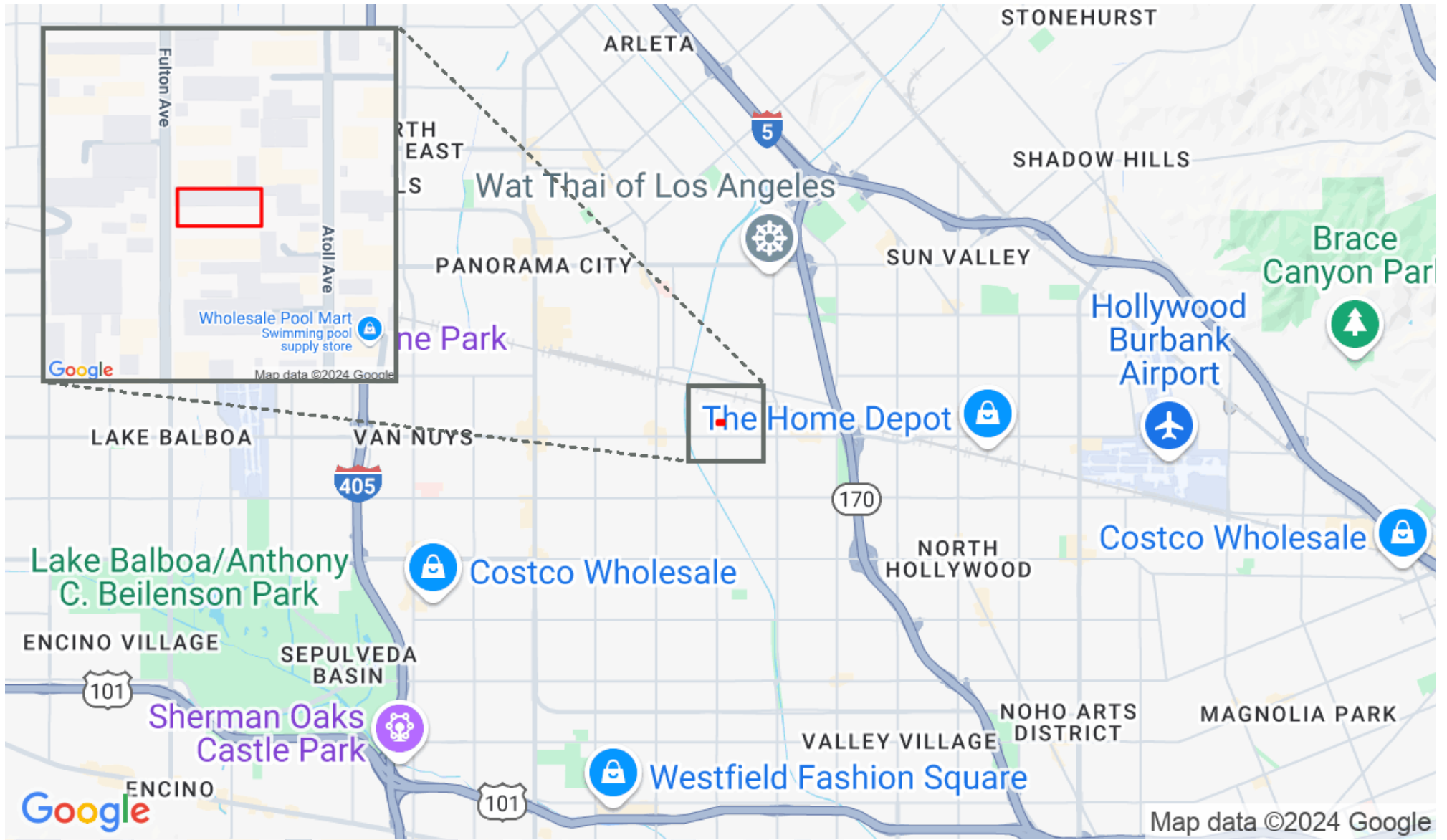
FLOOR PLAN
 SCALE: 1/4" = 1'-0"
 Includes a north arrow and a graphic scale bar.

7300 Fulton Ave



The Altemus Company

1537 Pontius Avenue Los Angeles, CA 90025 | 310-478-7727



Justin Altemus
justin@altemuscompany.com
310-478-7729



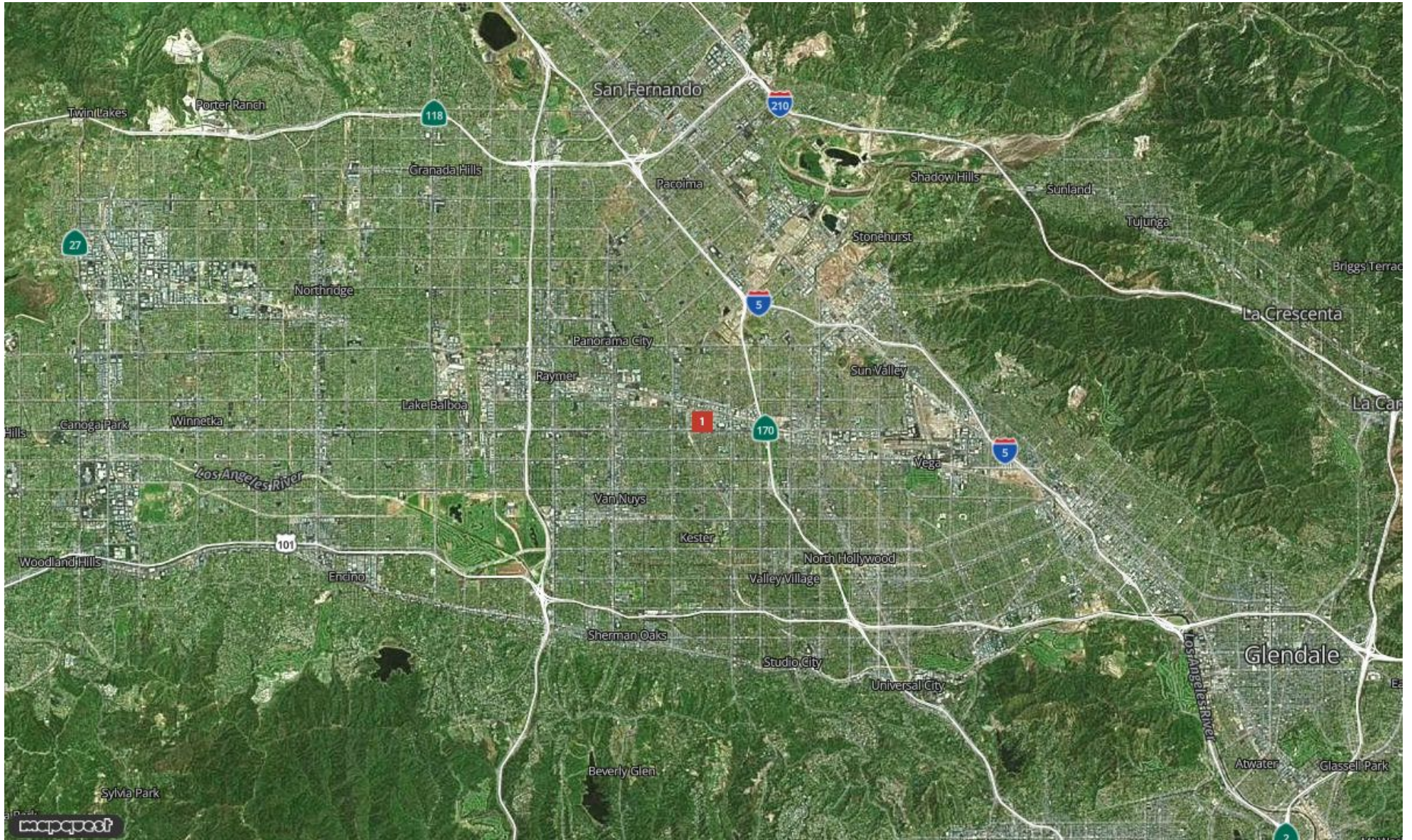
This information supplied herein is from sources we deem reliable. It is provided without any representation, warranty or guarantee, expressed or implied as to its accuracy. Prospective Buyer or Tenant should conduct an independent investigation and verification of all matters deemed to be material, including, but not limited to, statements of income and expenses. Consult your attorney, accountant, or other professional advisor.

Report for 7300 Fulton Ave, N...



The Altemus Company

1537 Pontius Avenue Los Angeles, CA 90025 | 310-478-7727



Justin Altemus

justin@altemuscompany.com

310-478-7729

