

114 EAST 40TH STREET

BETWEEN PARK & LEXINGTON AVENUES | MIDTOWN EAST

La Convenience

114

114 EAST 40TH STREET

BETWEEN PARK & LEXINGTON AVENUES | MIDTOWN EAST

PROPERTY HIGHLIGHTS

- All uses considered
- Excellent frontage with strong visibility
- Heavy foot traffic corridor driven by office workers, commuters, and tourists
- Dense daytime population with strong residential presence nearby
- Steps away from Grand Central Terminal and Bryant Park
- Neighboring tenants include:

McDonald's, United States Post Office, Extra Space Storage, Total Wireless, Kennedy Fried Chicken, Dunkin', & more!

SIZE: 650 SF Ground Floor

FRONTAGE: 13'

POSSESSION: Immediate

ASKING RENT: Upon Request

TRANSPORTATION: 4 6 6 7 S

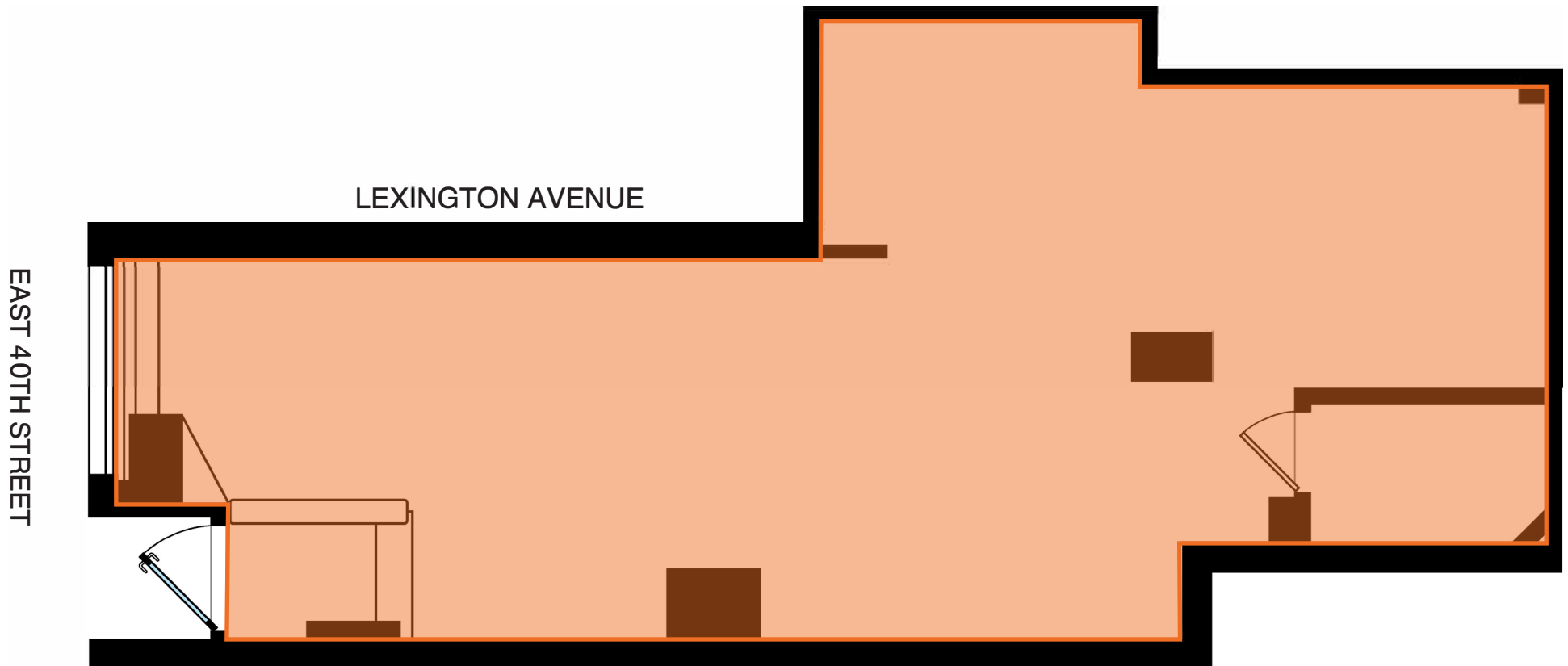


All information supplied in this marketing presentation and/or flyer is from sources deemed reliable and is furnished subject to errors, omissions, modifications, removal of listings from sale/lease and to any listing condition. Any square footage, dimensions, floor plans and/or technical data set forth are approximations and are subject to further elaboration/confirmation.

114 EAST 40TH STREET

BETWEEN PARK & LEXINGTON AVENUES | MIDTOWN EAST

FLOOR PLANS:
GROUND FLOOR - 650 SF



All information supplied in this marketing presentation and/or flyer is from sources deemed reliable and is furnished subject to errors, omissions, modifications, removal of listings from sale/lease and to any listing condition. Any square footage, dimensions, floor plans and/or technical data set forth are approximations and are subject to further elaboration/confirmation.

114 EAST 40TH STREET

BETWEEN PARK & LEXINGTON AVENUES | MIDTOWN EAST

FOR MORE INFORMATION,
PLEASE CONTACT:

BEN NAMDAR

516.406.9176 | BNamdar@ksrny.com

CORY MAIS

201.637.0056 | CMais@ksrny.com

DAVID GREEN

516.320.0260 | DGreen@ksrny.com

