

# 1155 F STREET

TROPHY DESIGN | EFFICIENT PERFORMANCE





# **Douglas Development** CORPORATION

For over three decades, Douglas Development Corporation has garnered redevelopment successes in the District of Columbia, as well as in suburban Virginia and Maryland. Douglas Development has earned a reputation for revitalizing underdeveloped, emerging areas and continues to win praise from local government authorities, community members, neighbors, and the real estate community at large.



Dominating F Street between 11th and 12th Streets NW, 1155 F Street is the perfect blend of history and performance. Designed in 2009 by architects Shalom Barnes and Pei, Cobb, Freed & Partners, the building is a stunning showcase of a modern and efficient office building artfully merged with the charisma of seven historic row homes via a breathtaking atrium.



TOSCA



1155 F STREET



## NEIGHBORHOOD + CONVENIENCE

In the heart of DC's East End, 1155 F Street offers one of the most compelling arrays of service amenities, high-end dining options, retailers, museums and transportation options within just steps from the building's front doors.



## DESIGN + PERFORMANCE

- Size: 260,000 RSF
- Floor-to-ceiling glass curtain wall system
- 30' by 30' column spacing
- New Conference Center Available for all tenants
- State-of-the-art fitness center
- Fully renovated with spectacular views
- 24-hour lobby attendant
- Three levels of underground parking

## HOSPITALITY + REFINEMENT

In early 2020, 1155 F delivered a series of modern, well-appointed and thoughtful renovations to the rooftop terrace, and main atrium lobby that included:

- Full renovation of and enhancements to the rooftop terrace and interior common areas serving the rooftop terrace, including new plantings, furnishings and technology, as well as renovation of the interior breakout areas and restrooms serving the rooftop terrace; and
- Enhancements to the main lobby, to include new furnishings, lighting elements and technology.





ROOF TERRACE



1155 F STREET

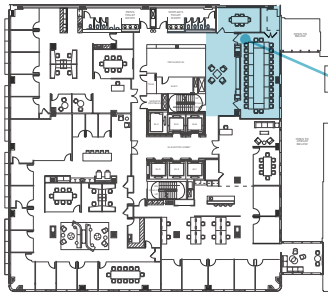
1155 F STREET





# CONFERENCE CENTER

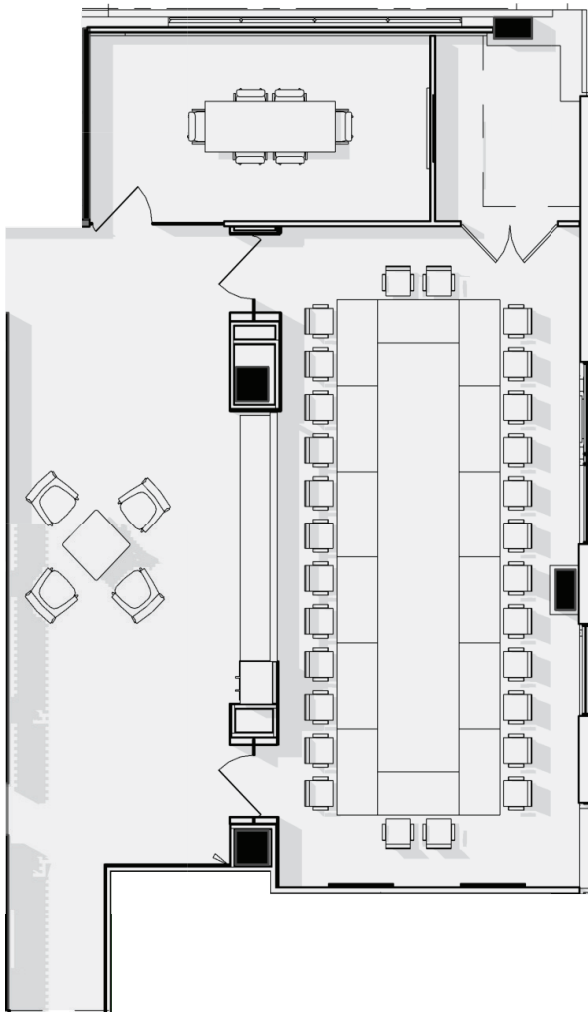
12TH STREET NW NW



CONFERENCE CENTER

F STREET NW

## 3<sup>RD</sup> FLOOR



**55**  
CLASSROOM LAYOUT

---

**28**  
BOARDROOM LAYOUT

AVAILABILITIES

**5<sup>TH</sup> FLOOR**

SUITE A - 4,148 RSF

SUITE B - 5,213 RSF

**JUST DELIVERED!**

**BRAND NEW SPEC SUITES**

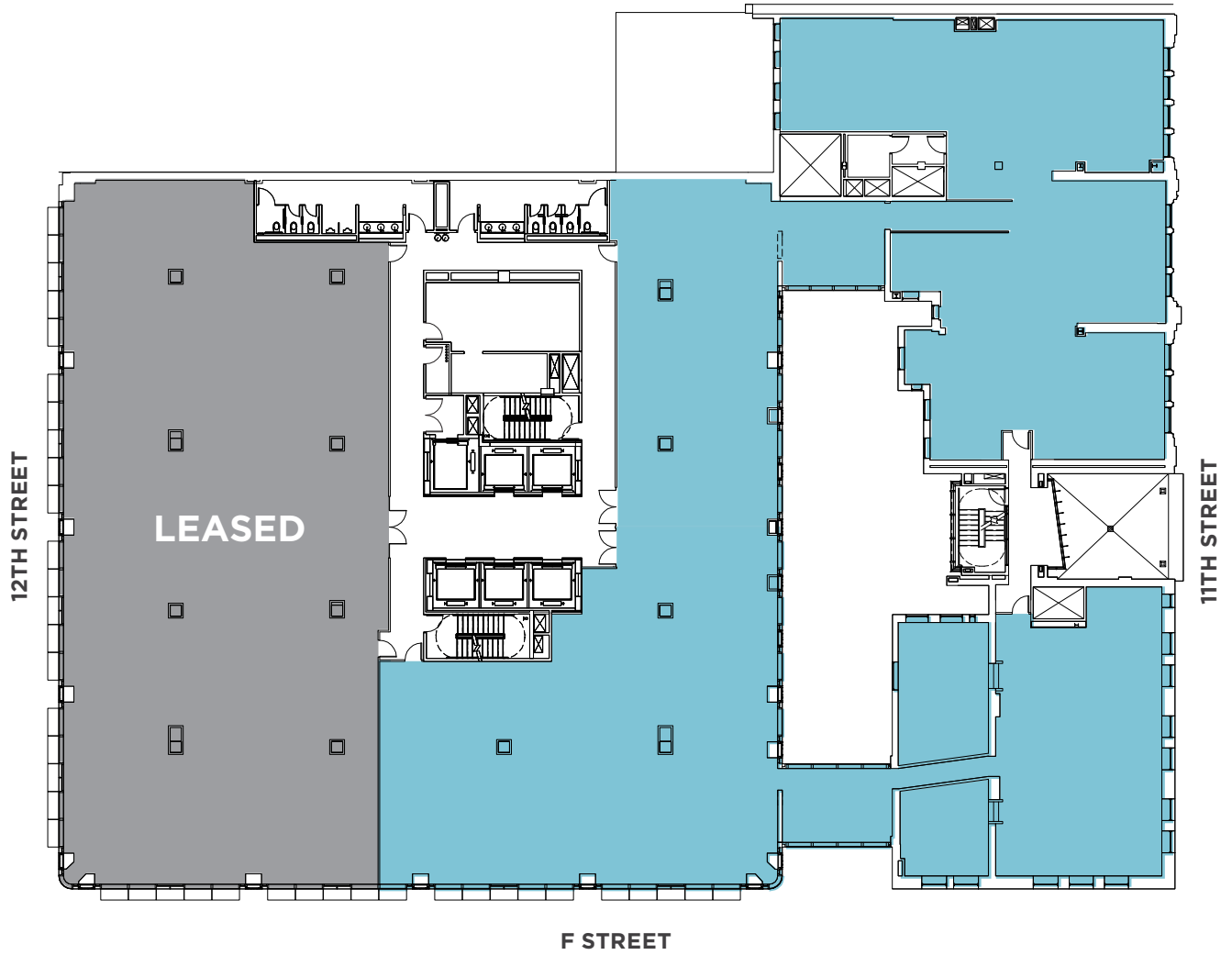


AVAILABILITIES

6<sup>TH</sup> FLOOR

16,976 RSF

AVAILABLE IMMEDIATELY



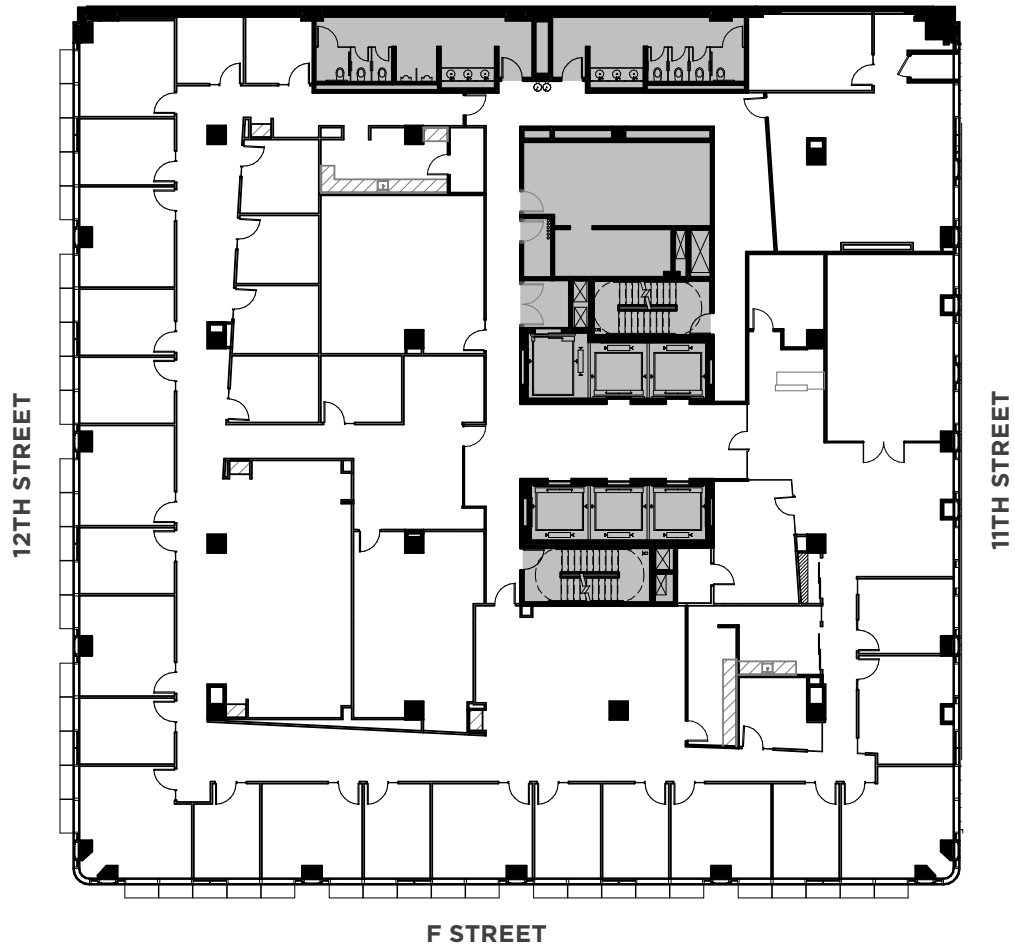
1155 F STREET

AVAILABILITIES

**8<sup>TH</sup> FLOOR**

17,259 RSF

AVAILABLE IMMEDIATELY



**1155 F** STREET

AVAILABILITIES

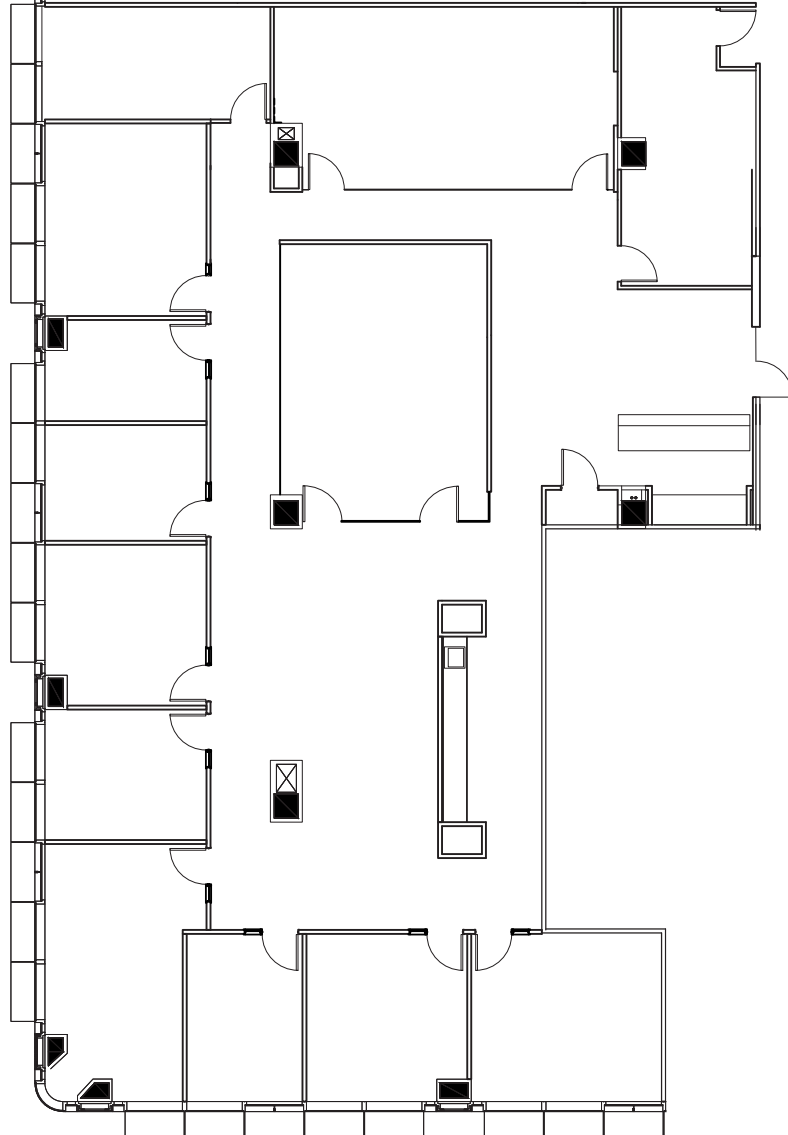
12TH STREET NW



**9<sup>TH</sup> FLOOR**  
SPEC SUITE  
6,415 RSF

**AVAILABLE IMMEDIATELY**

12TH STREET



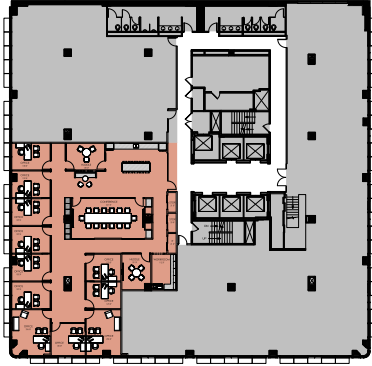
# AVAILABILITIES

## 11<sup>TH</sup> FLOOR

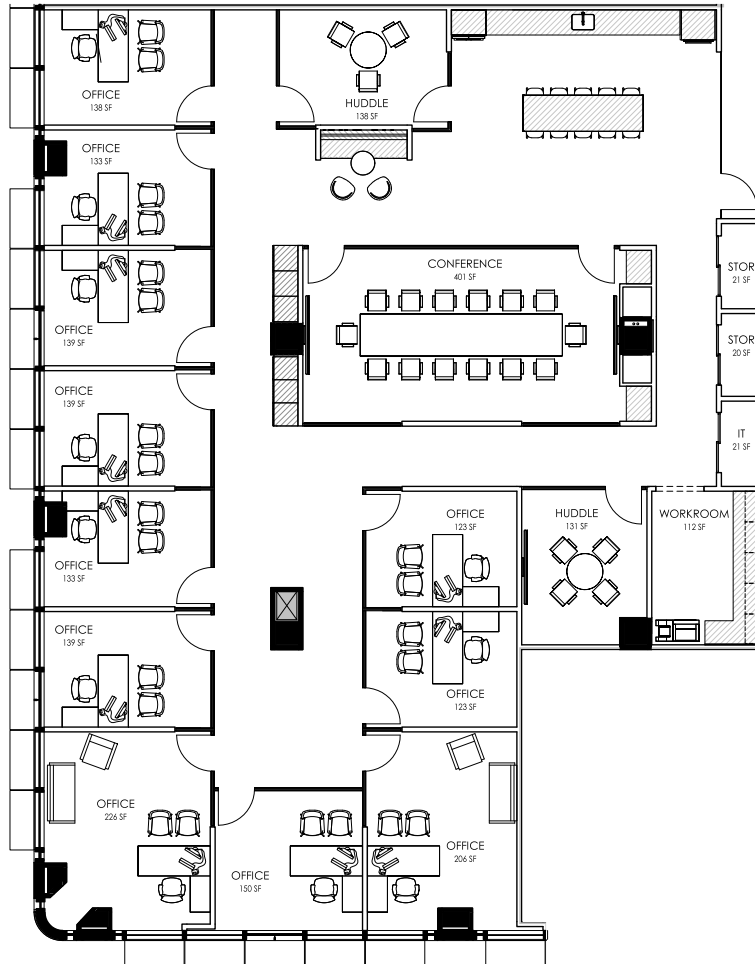
5,703 RSF

BRAND NEW SPEC SUITE  
DELIVERING AUGUST 2026

12TH STREET NW



12TH STREET



F STREET

1155 F STREET



# 1155 F STREET

---

TROPHY DESIGN + EFFICIENT PERFORMANCE

---

1155 F Street, NW | Washington, DC 20004

---

**FOR MORE INFORMATION PLEASE CONTACT:**

**Bruce Pascal** | [bruce.pascal@cushwake.com](mailto:bruce.pascal@cushwake.com) | (202) 463 2100

**Mark Wooters** | [mark.wooters@cushwake.com](mailto:mark.wooters@cushwake.com) | (202) 463 2100

**Gina Damond** | [gina.damond@cushwake.com](mailto:gina.damond@cushwake.com) | (202) 407 8127

