

ICONIC
REAL ESTATE

FOR LEASE

4,840 SF
WITH CONTIGUOUS LOWER-LEVEL OPTION



PRIME CAPITOL PARK
RETAIL/OFFICE SPACE

CONTACT

KEES JANEWAY

Kees@ICONICdet.com

313.603.**ICON**

1201 GRISWOLD STREET
DETROIT, MI 48226

PROPERTY FEATURES

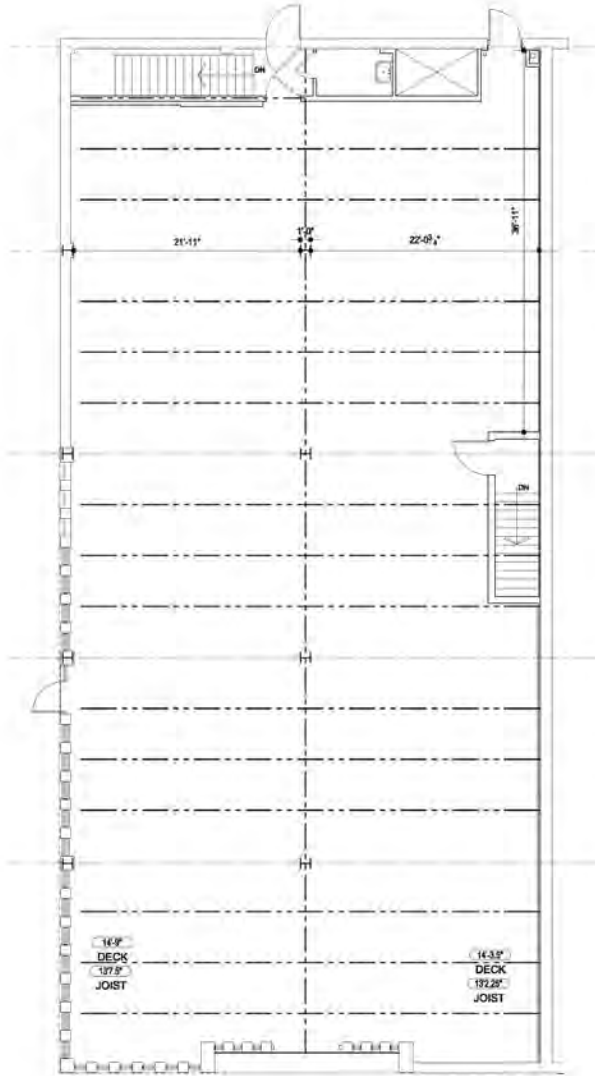
- Prime Capitol Park location
- 4,840 SF with contiguous lower-level option
- Ground Lease Option Available
- Easy walk to Leila, Cannelle, Etori Market, The Farwell Building, The Book Cadillac Hotel, Prime & Proper
- In proximity to Shinola Hotel, Rising Hudson's Building, Detroit Riverwalk, Campus Martius
- Unique opportunity for single user
- Dedicated patio space, walk-up service window, and/or exterior signage opportunity available
- Dedicated storefront and alley entrances
- Lease Rate: Contact Broker



ICONICREALESTATE.COM

313.603.**ICON**

450 W. FORT STREET, DETROIT MI 48226



FIRST FLOOR PLAN
1201 GRISWOLD ST. DETROIT, MI 48226
Date: 12-5-18 Scale: 1/8" = 1'-0"





DEMOGRAPHICS

DAYTIME POPULATION	250,000
HOTEL ROOM COUNT	17,467
FUTURE RESIDENTIAL DEVELOPMENT (UNITS)	700+

ANNUAL VISITORS (CBD)

ENTERTAINMENT	15,000,000+
STADIUMS	3,900,000
FESTIVALS	4,800,000
MAJOR CONFERENCES	1,200,000+