

# Metairie Tower

433 METAIRIE RD, METAIRIE, LA 70005



LEASING BY



**CORPORATE REALTY**

201 St. Charles Ave. Suite 4411  
New Orleans, LA 70170  
[CORP-REALTY.COM](http://CORP-REALTY.COM)

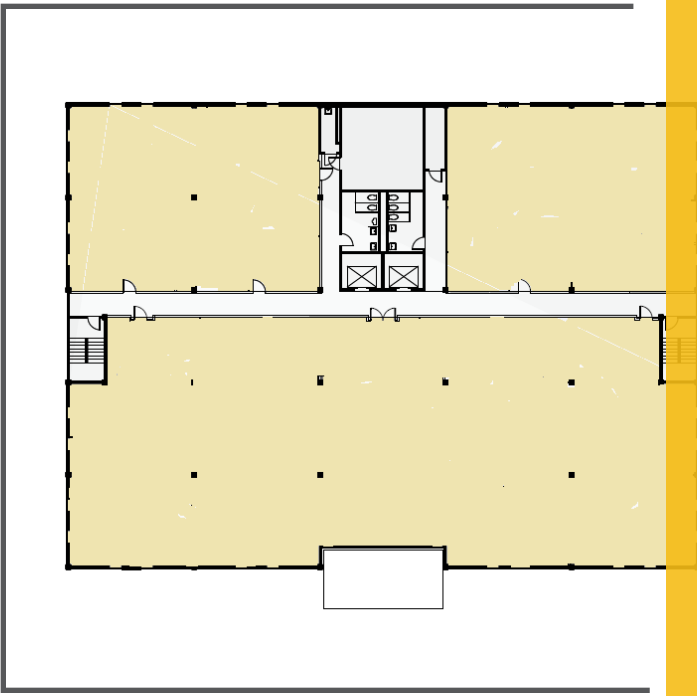
**BRUCE SOSSAMAN** SIOR  
LEASING DIRECTOR

[bsossaman@corp-realty.com](mailto:bsossaman@corp-realty.com)  
504.219.5842

OWNED AND  
MANAGED BY



**THE FEIL ORGANIZATION**



# ABOUT Metairie Tower

CLASS B OFFICE SPACE FOR LEASE  
6 FLOORS | 91,391 RSF



## AREA

Metairie Tower is located along Metairie Road, a main residential and commercial thoroughfare. The neighborhood contains banks, restaurants, shops, a grocery store, and more. Drive time to Old Metairie Village and Oakridge Place Shopping Center, both less than half a mile away, is 2 minutes.



## LOCATION

The office tower is just a few minutes from Orleans Parish. It provides a convenient office destination for people in Metairie, Lakeview, downtown New Orleans, and more via a quick connection with I-10.



## PARKING

There is an abundance of free, unreserved parking available 24/7.



## SUITES

Office suites run a full range of sizes, providing tailored situations for both smaller offices and larger companies. Exterior signage available at reasonable cost, subject to availability.



## LEASING BY



**CORPORATE REALTY**

201 St. Charles Ave. Suite 4411  
New Orleans, LA 70170  
[CORP-REALTY.COM](http://CORP-REALTY.COM)

**BRUCE SOSSAMAN** SIOB  
LEASING DIRECTOR

[bsossaman@corp-realty.com](mailto:bsossaman@corp-realty.com)  
504.219.5842

OWNED AND  
MANAGED BY



**THE FEIL ORGANIZATION**