


# END-CAP WAREHOUSE & OFFICE SPACE AVAILABLE FOR SALE





**10850 NW 27 STREET, DORAL, FL 33172 | ~ 7,100 SF**


## PROPERTY HIGHLIGHTS


**SQ. FT.** ~ 7,100 SF TOTAL  
~ 4,100 SF WAREHOUSE  
~ 3,000 SF OFFICE (7 OFFICES + BULLPEN +  
CONFERENCE ROOM & KITCHENETTE)


 1 DOCK DOOR + 1 METAL RAMP  
(REINFORCED W/ STEEL GATE)


 20' CEILING HEIGHT


 2 RESTROOMS


 11 PARKING SPACES

 REINFORCED WALLS W/ STEEL PLATES  
FOR ADDED SECURITY

 RACKS INCLUDED IN SALE

 PRE-WIRED NETWORK INFRASTRUCTURE  
FOR ALARM, TELEPHONE & SECURITY SYSTEMS

 ASSOCIATION FEE: \$845.50/ MONTH

 CLOSE PROXIMITY TO FL TURNPIKE &  
DOLPHIN EXPY



**ASKING PRICE:  
\$2,950,000**



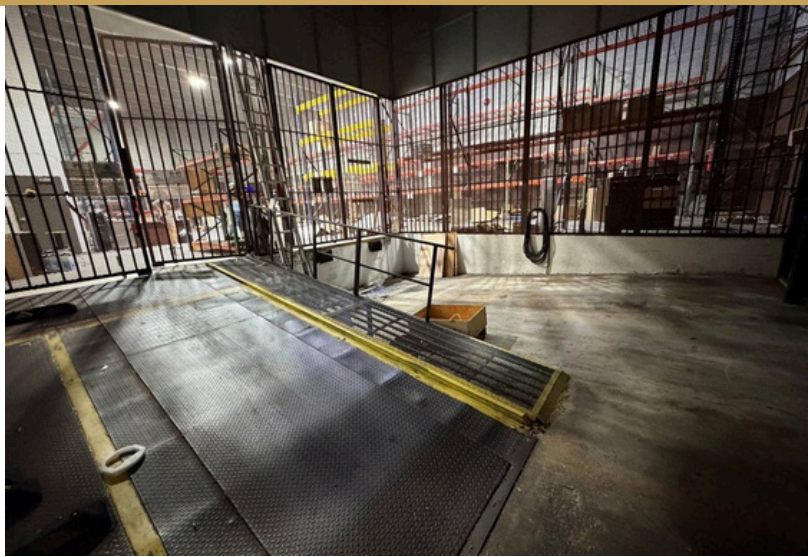
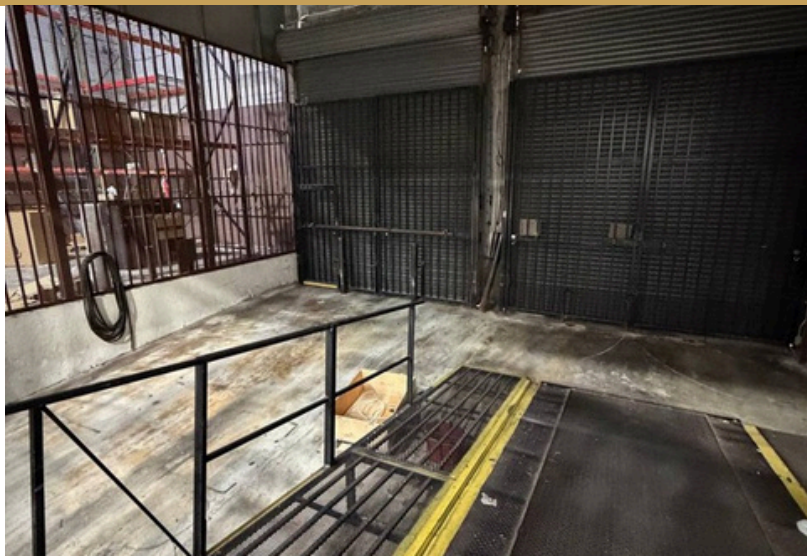
Reshma Parvani, SIOR  
Broker  
305-342-9576

rparvani@parvanigroup.com

Vishal Parvani, SIOR  
Broker-Associate  
786-205-5579

vparvani@parvanigroup.com

# PHOTOS



Reshma Parvani, SIOR

Broker

305-342-9576

rparvani@parvanigroup.com

Vishal Parvani, SIOR

Broker-Associate

786-205-5579

vparvani@parvanigroup.com