

NOTE:
TENANT OFFICE FITUP AREA - 3,743 SQ. FT.

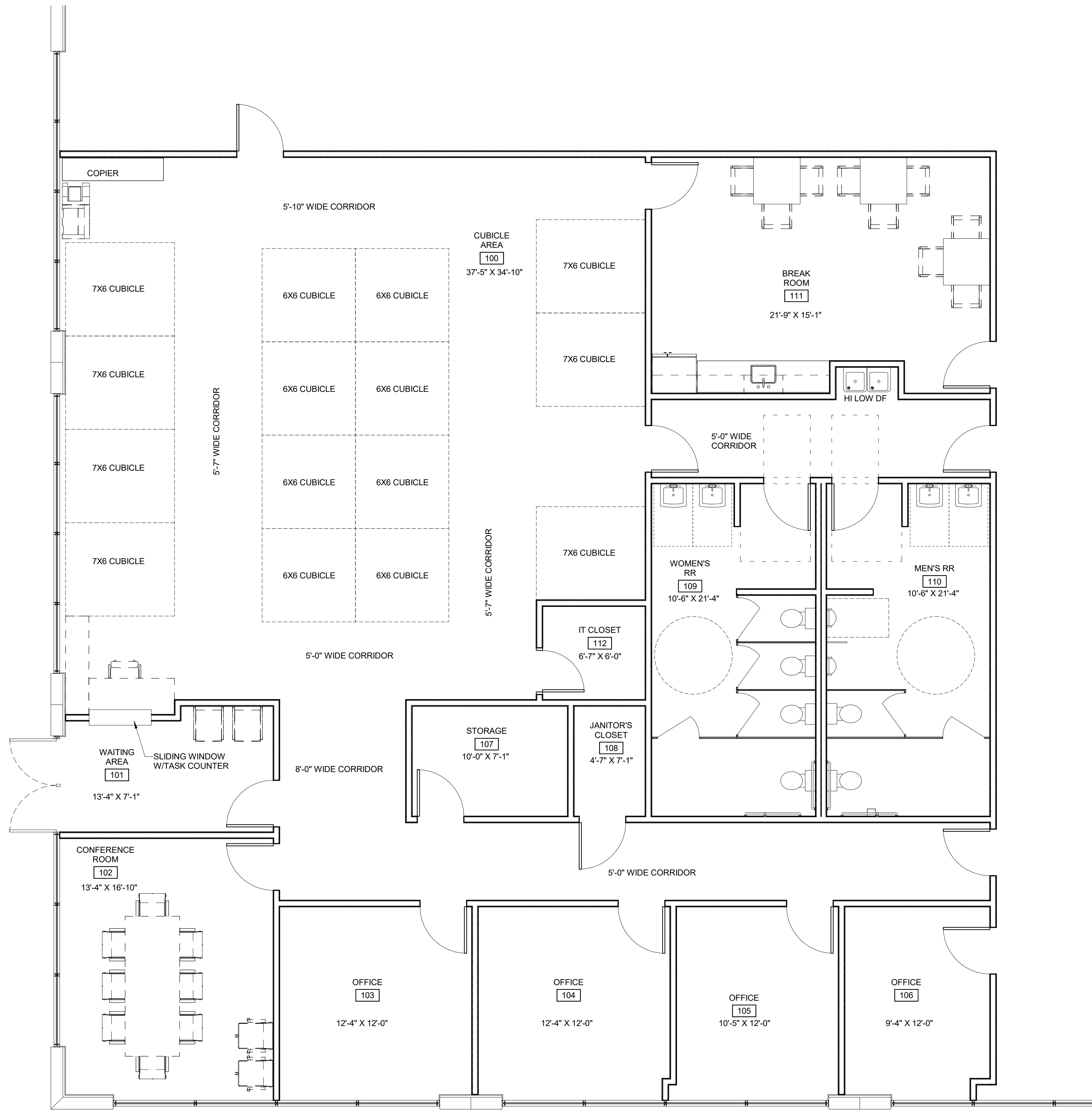


TRAPANI ASSOCIATES ARCHITECTS

2 BURLINGTON WOODS DRIVE
SUITE 201
BURLINGTON, MA 01803
781.331.0429



PROFESSIONAL STAMP



1 FLOOR PLAN
1/4" = 1'-0"

PLEASE CHECK APPROPRIATE BOX & SIGN BELOW

DESIGN IS APPROVED

DESIGN IS APPROVED WITH INDICATED COMMENTS

DESIGN IS NOT APPROVED, REVISE & RESUBMIT

APPROVED BY: _____ REPRESENTATIVE SIGNATURE

DATE: _____

DISCLAIMER:
YOUR APPROVAL OF THIS DESIGN DEVELOPMENT PACKAGE ACKNOWLEDGES THAT FUTURE CHANGES MAY RESULT IN REVISIONS TO THE CONSTRUCTION DOCUMENTS AND ALL RELATED ADDITIONAL COSTS INCURRED BY TRAPANI ARCHITECTS.

NOTE:
THESE PLANS ARE SPECIFICALLY DESIGNED AND DRAFTED FOR CONSTRUCTION BY LICHTEFELD, INC. THE PLANS ARE TAILORED FOR LICHTEFELD, INC. CONSTRUCTION PRACTICES. THE PLANS ARE INTENDED TO BE USED BY LICHTEFELD, INC. IN CONJUNCTION WITH THEIR SCOPE OF WORK AND THEIR COMMON CONSTRUCTION PRACTICES. THE DRAWINGS ARE NOT INTENDED FOR USE BY OTHERS.

DESIGN DEVELOPMENT

LA CROIX OFFICE

6937 MIDLAND INDUSTRIAL DRIVE
SHELBYVILLE, KY 40065

PROJECT NO. 40033

PROJECT PHASE:
DDs

REVISIONS

NO.	DATE	DESCRIPTION

FLOOR PLAN

DATE: 02/08/2024
DRAWN: SSK
CHECKED: MP

DD-1