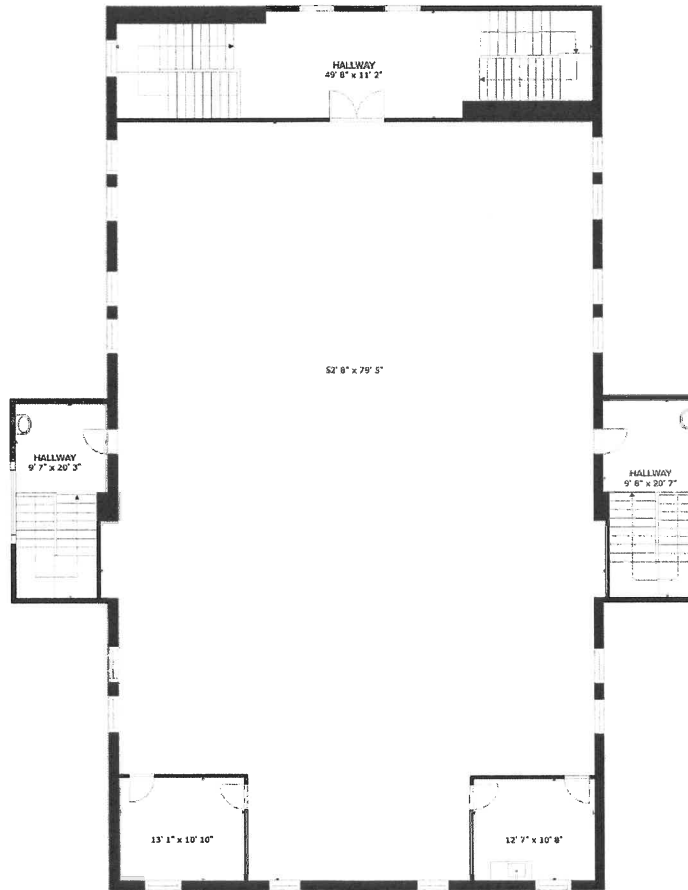
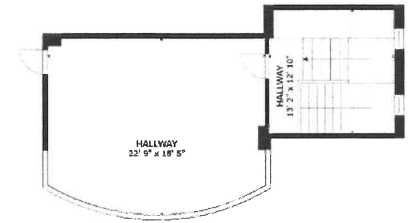


FLOOR 1



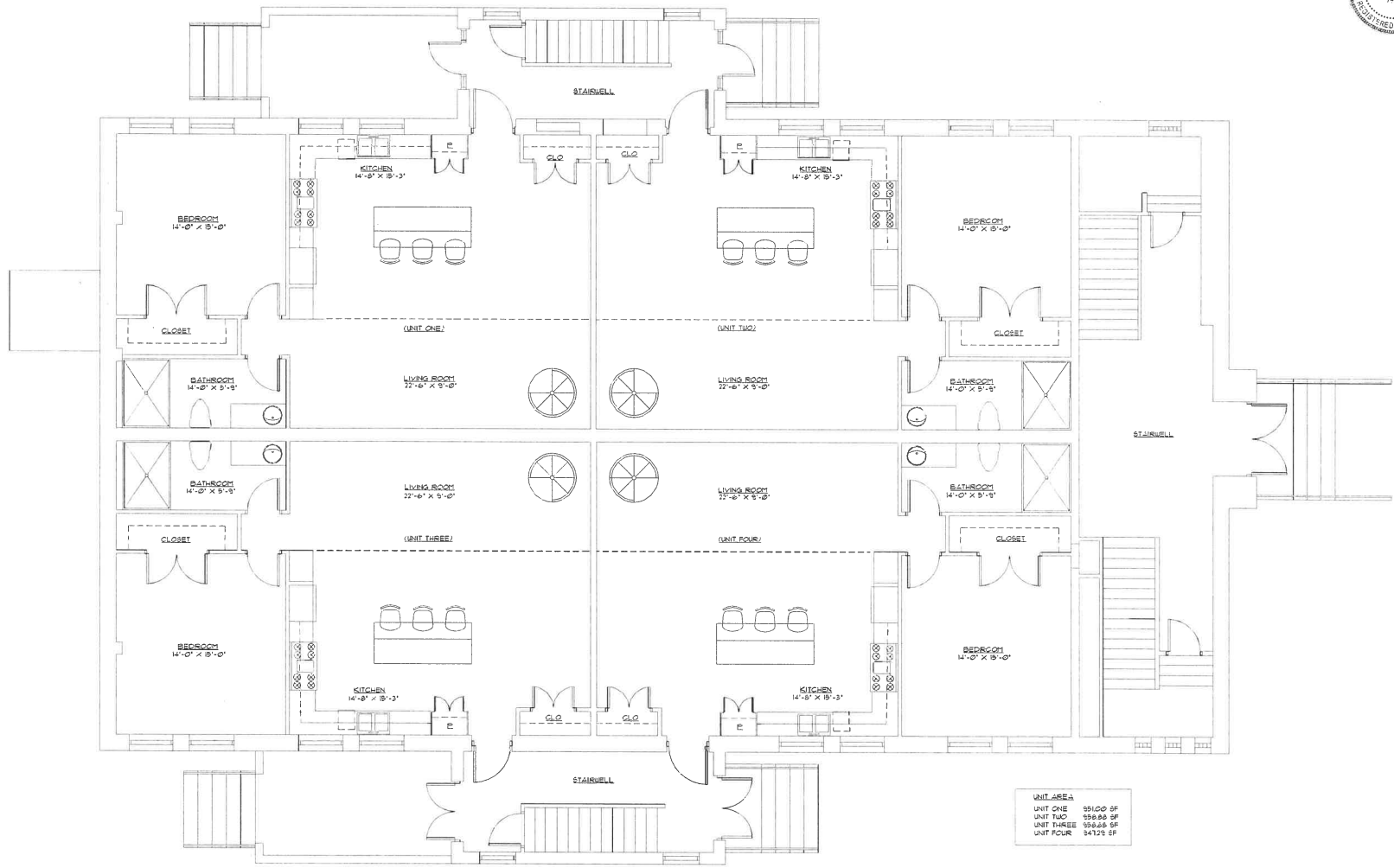
FLOOR 2



FLOOR 3

GROSS INTERNAL AREA
 FLOOR 1 4,949 sq.ft. FLOOR 2 4,948 sq.ft. FLOOR 3 570 sq.ft.
 TOTAL : 10,466 sq.ft.

SIZES AND DIMENSIONS ARE APPROXIMATE, ACTUAL MAY VARY.



UNIT AREA	
UNIT ONE	591.00 SF
UNIT TWO	596.88 SF
UNIT THREE	598.68 SF
UNIT FOUR	641.25 SF

REVISED FIRST FLOOR PLAN
SCALE 1/4" = 1'-0"

THIS PLAN WAS PREPARED BY THE ARCHITECT AND IS NOT TO BE REPRODUCED OR TRANSMITTED IN ANY FORM OR BY ANY MEANS, ELECTRONIC OR MECHANICAL, INCLUDING PHOTOCOPYING, RECORDING, OR BY ANY INFORMATION STORAGE AND RETRIEVAL SYSTEM.

MARK LESNER
ARCHITECT, INC.

2400 North Franklin
Columbus, Ohio 43207
614.291.1111
www.lesnerarch.com

ST. JOSEPH CONDOMINIUMS 317 WEST 15 TH. STREET LORAIN, OH. 44032		
Scale:	Date: 05/06/23	Job Number: 2205
Revisions:		Sheet: 28 of 41



LOFT AREA	
UNIT FIVE	678.34 SF
UNIT SIX	618.58 SF
UNIT SEVEN	456.10 SF

LOFT PLAN UNITS 5, 6, 7

SCALE 1/4" = 1'-0"



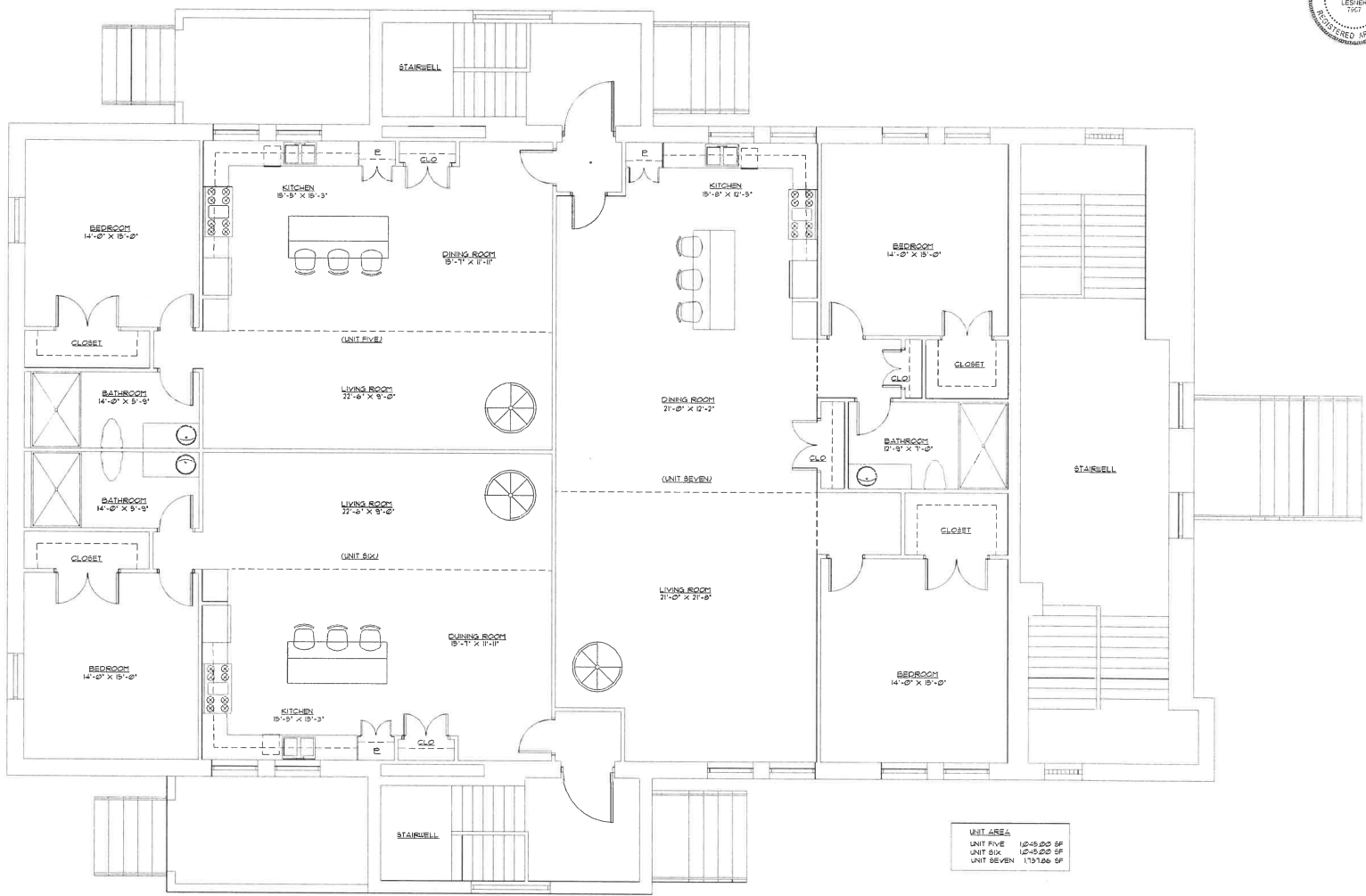
NO SCALE AND NO UNIT INDICATED SHALL NOT BE
 TAKEN AS A CONTRACT DOCUMENT BY MARK LESNER
 ARCHITECT, INC.

**MARK LESNER
ARCHITECT, INC.**

2180 Akron Road
 Akron, Ohio 44312
 Tel: 330.463.1111
 Fax: 330.463.1111
 www.mlesner.com

ST. JOSEPH CONDOMINIUMS
 311 WEST 15 TH. STREET
 LORAIN, OH 44052

Scale:	Date:	JOB NUMBER:
	03/18/23	2305
Revision:		Sheet:
		48 of 41



UNIT AREA	
UNIT FIVE	1045.00 SF
UNIT SIX	1043.25 SF
UNIT SEVEN	1191.66 SF

REVISED SECOND FLOOR PLAN
SCALE 1/4" = 1'-0"

NO. 24, 24120 OH. ST. P. AT INDCOR. SHALL NOT BE
 BINDING UNLESS APPROVED BY THE BOARD OF APPEALS.
 SEALING BY: [Signature]

**MARK LESNER
ARCHITECT, INC.**

2400 Main Page Plan
 REVISED 10.14.13
 10:45 AM 10/14/13
 10:45 AM 10/14/13
 10:45 AM 10/14/13

ST. JOSEPH CONDOMINIUMS
 317 WEST 15 TH STREET
 LORAIN, OH 44092

Scale:	Date:	Job Number:
Revisions:	09/16/13	2305
	Sheet	26 of 21