

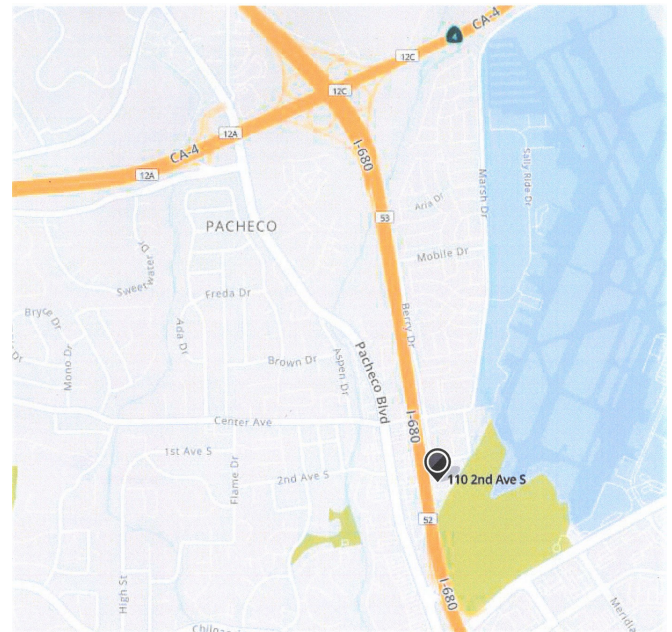
Light Industrial/Commercial FOR LEASE

110 Second Avenue South, Suite A-1
Pacheco, California



Property Information:

- **FOR LEASE FREEWAY FRONTAGE UNIT**
- **FORMER LUMBER LIQUIDATORS STORE**
- **7,000 +/- RENTABLE SQUARE FEET**
- **RATE: \$10,000 PER MONTH NNN BASIS**
- **1,000 +/- SQUARE FEET OF IMPROVED OFFICE/SHOWROOM AREA WITH HVAC**
- **THREE RESTROOMS, BREAK ROOM**
- **POSSIBLE FREEWAY VISIBLE SIGNAGE**
- **TWO GRADE LEVEL 12' X 12' DOORS**
- **200 AMPS OF 120/208 VOLT 3 PHASE**
- **GOOD ACCESS TO HWY 4 AND I-680**



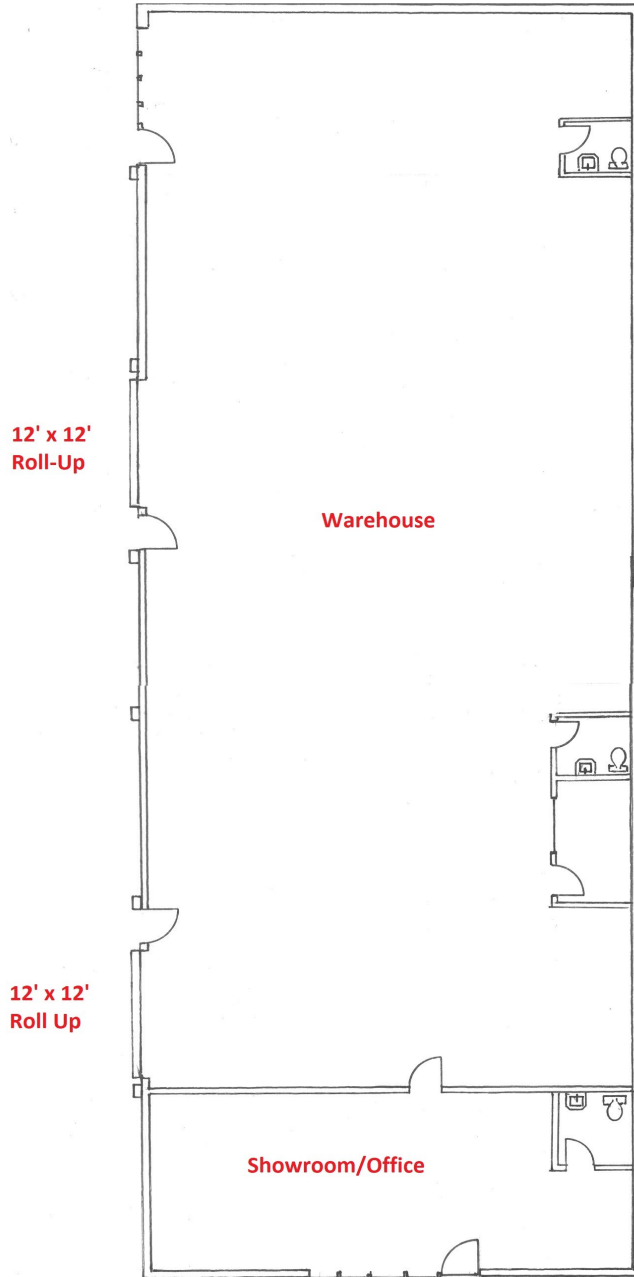
Contact Listing Brokers:

Thomas Caple
Deutscher Properties Corp
(510) 908-0505
tom@dpccommercial.com
BRE# 01089011

Tom Cranmer
Cranmer Assoc. Inc.
(925) 933-1044
tom@cranmerassociatesinc.com
BRE# 00370734

Deutscher Properties Corp.
370 Civic Drive
Pleasant Hill, CA
Office (925) 676-6166
Fax (925) 676-6177
www.dpccommercial.com

**110 Second Avenue South, Suite A-1,
Pacheco, California – FLOOR PLAN**



Contact Listing Brokers:

Thomas Caple
Deutscher Properties Corp
CA BRE# 01089011
(510) 908-0505
tom@dpccommercial.com

Tom Cranmer
Cranmer & Assoc., Inc.
CA BRE# 00370734
(925) 933-1044
tom@cranmerassociatesinc.com

Deutscher Properties Corp.
370 Civic Drive
Pleasant Hill, CA
Office (925) 676-6166
Fax (925) 676-6177
www.dpccommercial.com

110 Second Avenue South, Suite A-1, Pacheco, California – SITE PLAN



Contact Listing Brokers:

Thomas Caple
Deutscher Properties Corp
CA BRE# 01089011
(510) 908-0505
tom@dpccommercial.com

Tom Cranmer
Cranmer & Assoc., Inc.
CA BRE# 00370734
(925) 933-1044
tom@cranmerassociatesinc.com

Deutscher Properties Corp.
370 Civic Drive
Pleasant Hill, CA
Office (925) 676-6166
Fax (925) 676-6177
www.dpccommercial.com