



For sublease

2890 Harper Rd, Melbourne, FL 32904
7,380 SF available

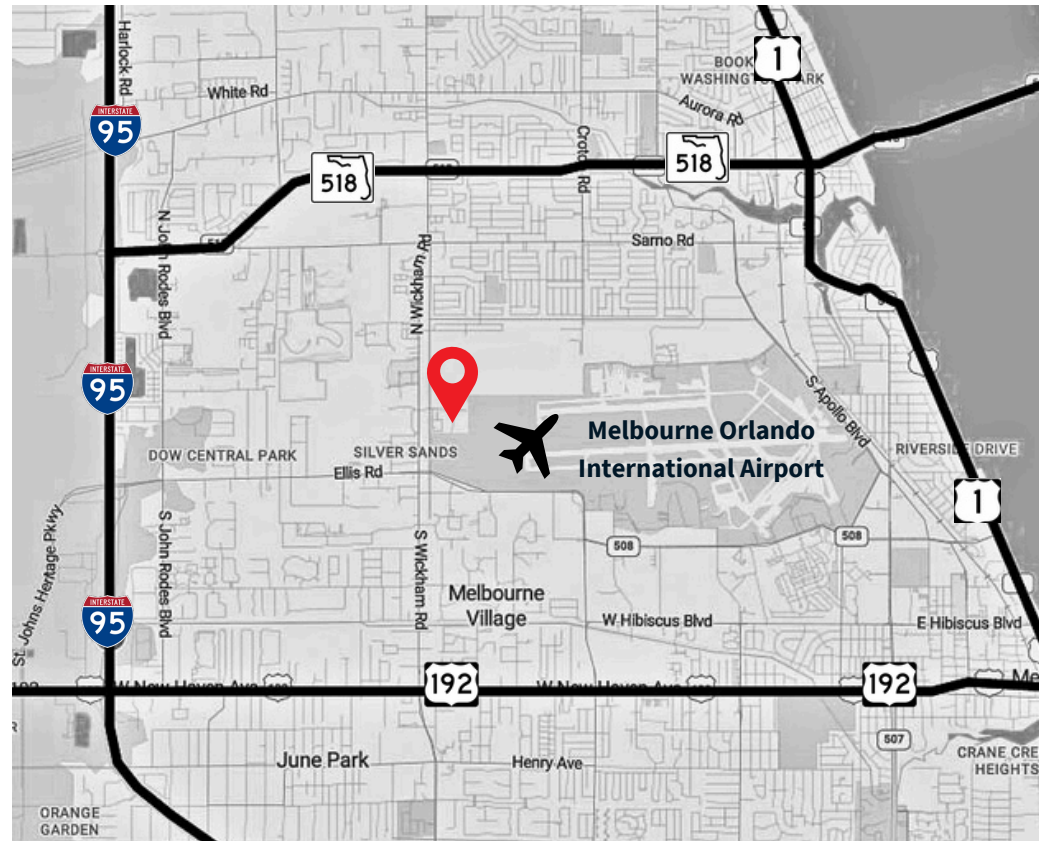
Property overview

Property specifications

- 7,380 SF available on 1 acre
- 3,600 SF of office
- 4 (12'x12') grade-level doors
- 16' clear height
- Industrial outside storage
- Fully fenced and secured yard
- Zoned M1
- Sublease available through 4/30/2029
- Call for pricing

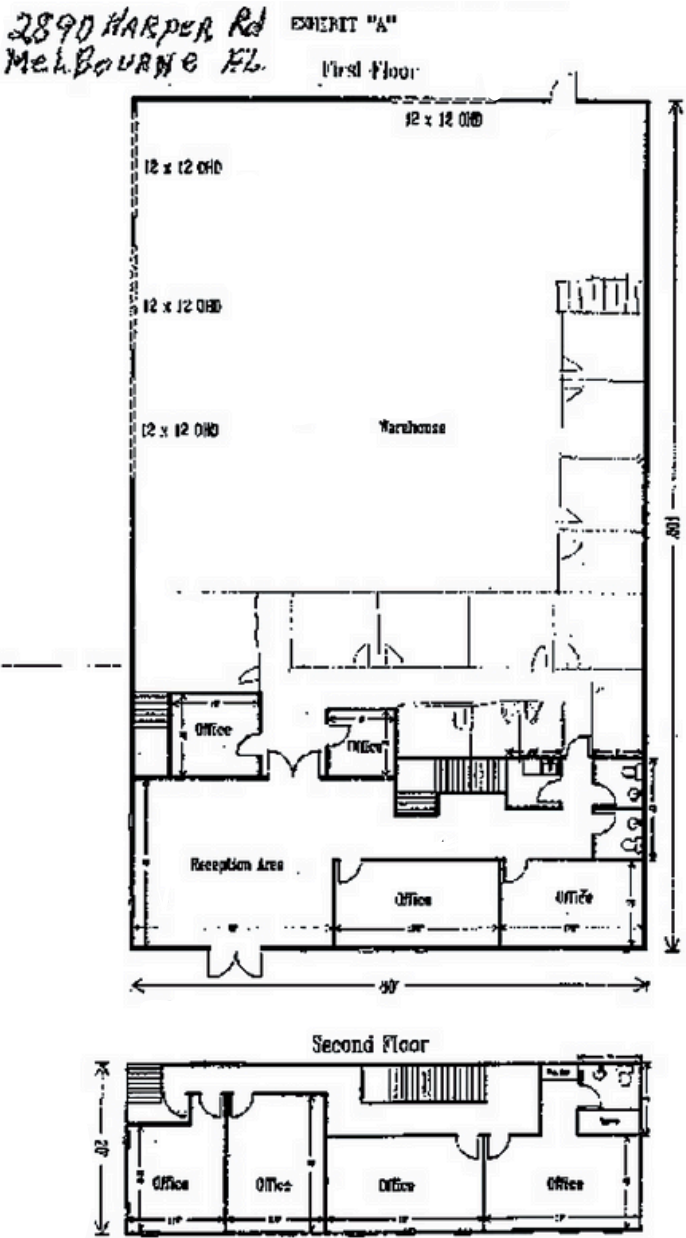
Location

- Close to Melbourne Orlando International Airport
- Easy access to I-95 for north-south transportation
- Part of a growing high-tech corridor



	30 min	60 min	90 min
Total population	433,575	1,222,512	4,221,940
Total households	180,217	489,881	1,634,138
Avg households	\$109,055	\$107,429	\$105,723
Total businesses	18,254	44,778	179,639
Total employees	163,062	398,038	1,767,527

Floorplan



JLL**Cameron Montgomery**

Vice President

Cameron.Montgomery@jll.com

+1 407 982 8650

Bobby Isola, SIOR, CCIM

Executive Managing Director

Bobby.Isola@jll.com

+1 407 930 1804