

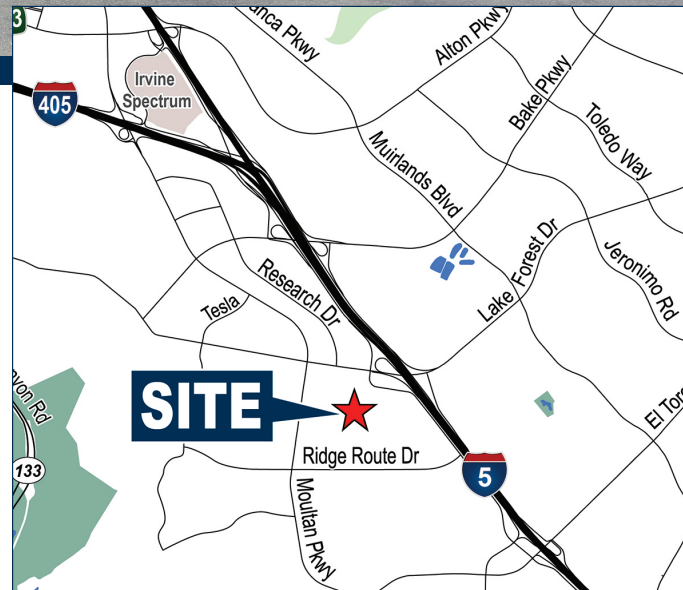
# AVAILABLE | ±1,920 SF

23221 PERALTA DRIVE | UNIT H | LAGUNA HILLS | CA



## PROPERTY FEATURES

- Prime Laguna Hills location
- Unit H ±1,920 SF with ±300 SF of Office/Showroom
- 100 Amps, 120/208 Voltage (Verify)
- Parking 2:1
- 14' Clear Height
- Available Now
- Great Access to 5 Freeway
- Retail Amenities Nearby



Exclusively Offered By:

**Voit**

REAL ESTATE SERVICES



2020 Main Street, Suite 100 | Irvine, CA 92614 | [www.voitco.com](http://www.voitco.com)



**MIKE CARGILE**

Senior VP | Partner

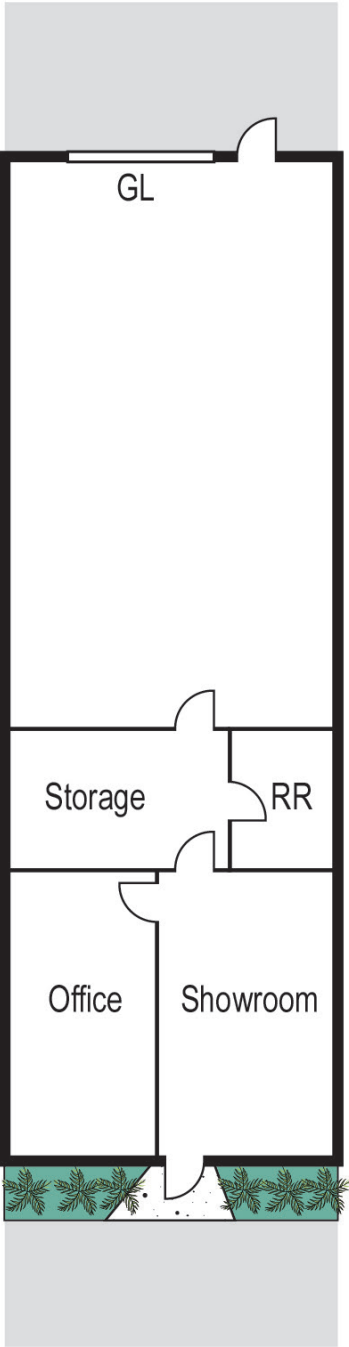
License #00491668

(949) 263-5338

[MCargile@voitco.com](mailto:MCargile@voitco.com)

The information contained herein has been obtained from sources we deem reliable. While we have no reason to doubt its accuracy, we do not guarantee it.

UNIT H  
1,920 SF



Not to Scale

Exclusively Offered By:



**MIKE CARGILE**  
Senior VP | Partner  
License #00491668  
(949) 263-5338  
MCargile@voitco.com