

FOR SALE
9,015 SF AVAILABLE



FEATURES:

- Retail Condominium in the heart of Maple Grove available "For Sale."
- Premium location on the prominent corner of Weaver Lake Road & I-94.
- Unique architectural design featuring LED aluminum crown cornice.
- Building facade signage acts as a billboard to Interstate 94!
- Precast floor with basement underneath.
- Open showroom ideal for numerous retail users!

List Price:
NEGOTIABLE

Overview 1
 Property Info 2
 Maps / Site Plan 3-4
 Floor Plan 5-6
 Photo Gallery 7
 City Information 8




Steve Fischer
612.619.9991
sfischer@arrowcos.com




Chad Weeks
612.619.9911
cweeks@arrowcos.com

Contact
Phone: 763.424.6355
Fax: 763.424.7980

Arrow Companies
7365 Kirkwood Court N. Suite 335
Maple Grove, MN 55369

www.arrowcos.com



PROPERTY FACTS

FOR SALE
9,015 SF AVAILABLE

BUILDING SIZE (MAIN)
Main Level - 5,181 SF
Mech Room - 47 sf
Shared Restroom - 118 SF
Total Square Feet - 5,346 SF

Lower Level - 3,294 SF
Common Hall - 375 SF
Total Square Feet - 3,669 SF

YEAR BUILT 2010

2024 ASSOCIATION / DUES Lifestyle Commons Condominium Association (\$1,426 / per month)

PID # 22-119-22-23-0030 (Hennepin County)

2024 PROPERTY TAXES \$42,807.44

LOT SIZE 2.1 Acres (CIC Plat)

CONSTRUCTION Masonry / Steel

ROOF TYPE EDPM Ballasted

CLEAR HEIGHT Main Level (14' - 0") / Basement (11' - 3")

FIRE PROTECTION Fully Sprinklered (NFPA - 13)

ELECTRICAL 300 amp, 208 volt, 3-phase panel

HVAC Two (2) 7.5-ton RTU's

Contact

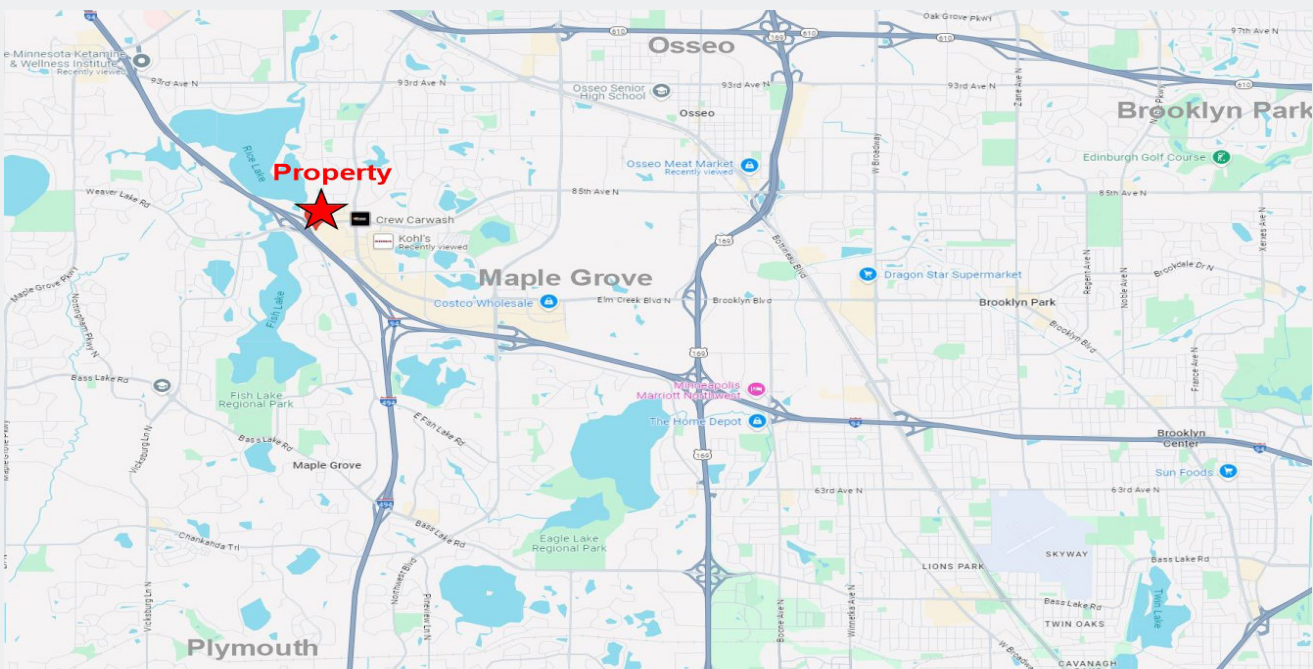
Phone: 763.424.6355
Fax: 763.424.7980

Arrow Companies

7365 Kirkwood Court N. Suite 335
Maple Grove, MN 55369

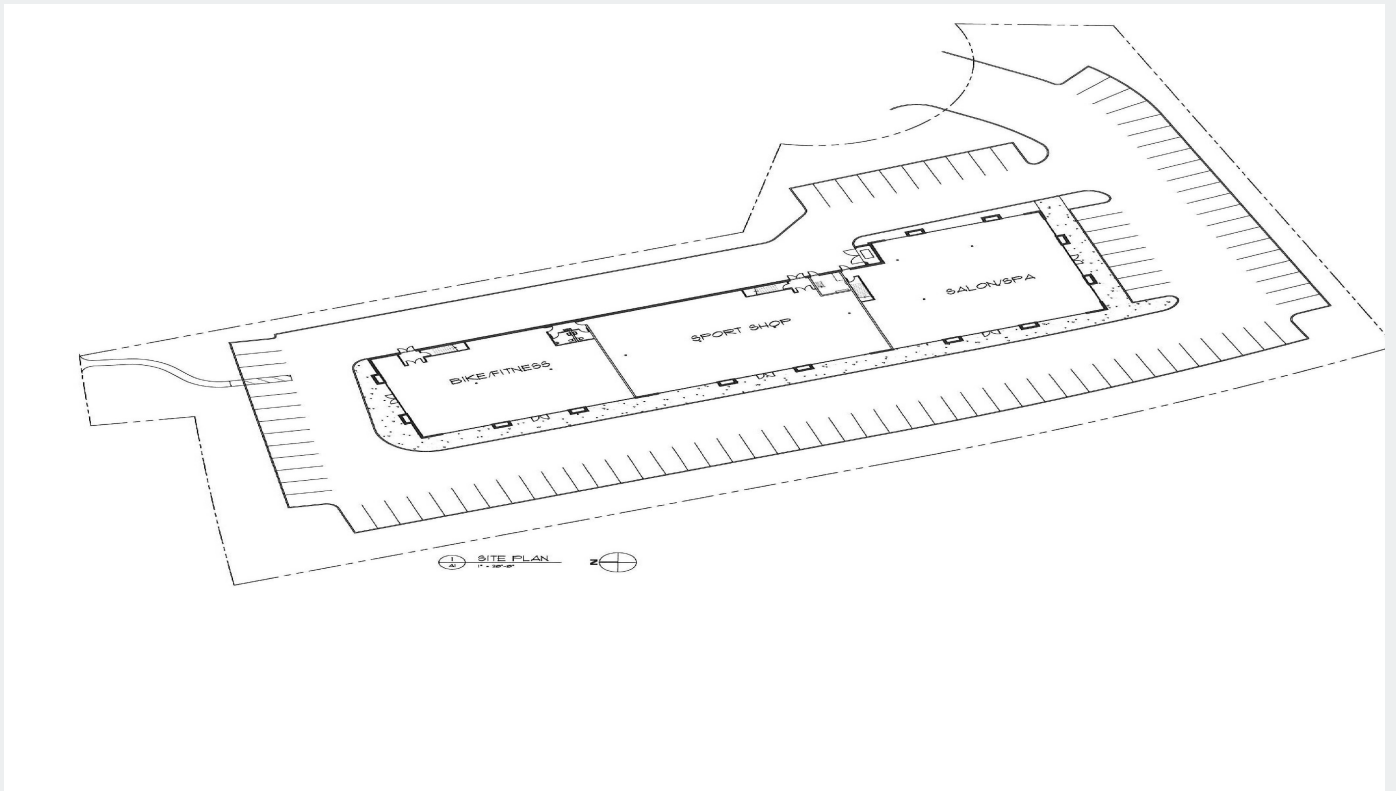
AERIAL & MAP

FOR SALE
9,015 SF AVAILABLE



SITE PLAN

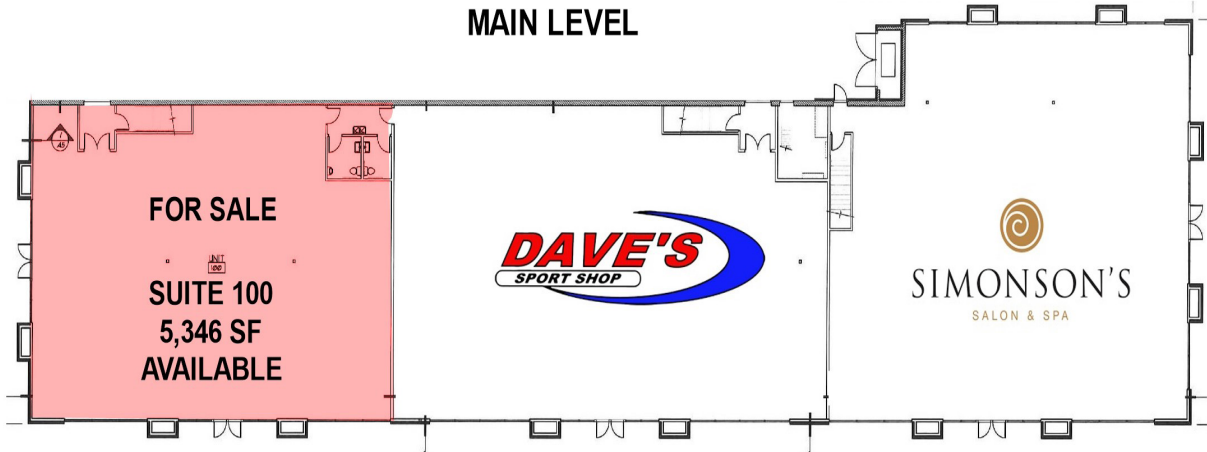
FOR SALE
9,015 SF AVAILABLE



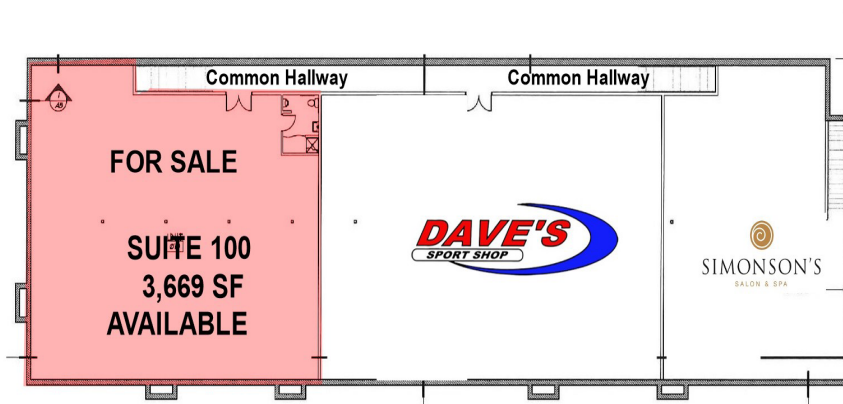
SITE PLAN

FOR SALE
9,015 SF AVAILABLE

MAIN LEVEL



LOWER LEVEL



FLOOR PLAN

FOR SALE
9,015 SF AVAILABLE

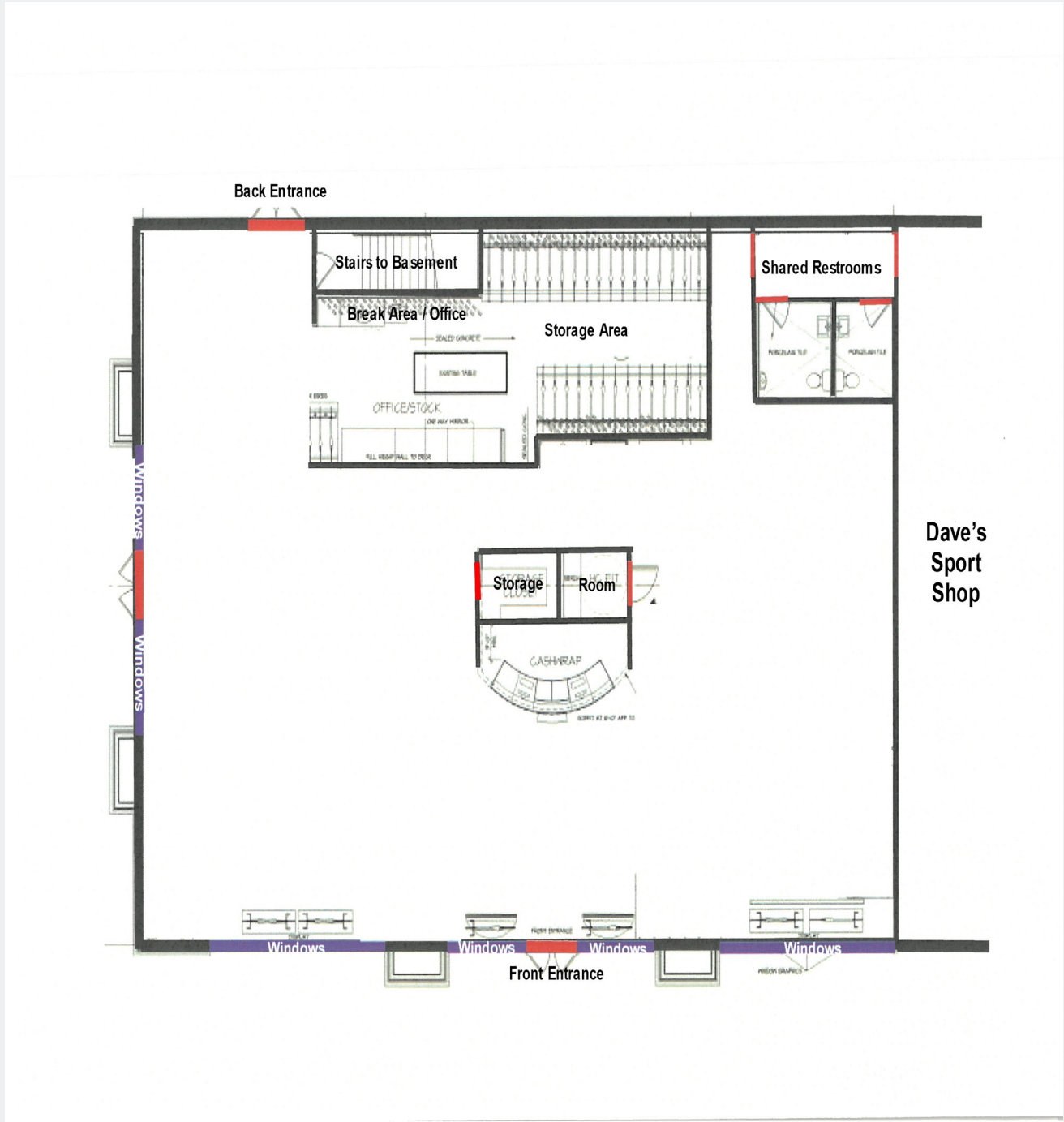


PHOTO GALLERY

FOR SALE
9,015 SF AVAILABLE





CITY INFORMATION

FOR SALE
9,015 SF AVAILABLE

CITY OF MAPLE GROVE

Maple Grove is a flourishing community in the Twin Cities metro area that over 61,000 residents proudly call home. Just twenty minutes from Minneapolis and forty-five minutes from the Minneapolis/St. Paul International Airport, citizens receive every amenity of a large city and the peace and charm of a small town.

Set within the heart of Hennepin County, Maple Grove’s vibrant history dates back to the mid 1800s when the Winnebago Indians were settled in the area. Today, over 1,000 businesses operate in this progressive city which offers people quality health-care, year-round recreational activities, and an excellent standard of living.

Rated high by citizens as a great place to raise children, Maple Grove offers plenty of opportunities for residents to live life to the fullest. Looking for something to do with the family? Look no further than the Maple Grove Community Center which has indoor/outdoor play-grounds, ice skating, indoor/outdoor pools, and picnic area. It is also the site of the Maple Grove Farmers Market where fresh food and fun are in abundance. Check out the many community concerts and family activities at the Town Green. Don’t miss the annual Maple Grove Days festivities in July and numerous community events sponsored by local businesses and community organizations.

Maple Grove is also a great place for commerce and has a solid business community in which a number of highly regarded businesses continue to thrive.

Maple Grove has a wide range of housing options available; from rental to charming single family homes to townhouses with scenic views to exciting senior living communities and everything in between. Most of the developments come complete with play areas which are perfect for those with families or looking to start a family. Subdivisions are also within close proximity to multiple shopping and dining options so convenience is something that’s around every corner.

**DEMOGRAPHICS
(5 Mile Radius)**

- 2024 Avg. Household Income - \$136,942
- 2029 Projected Population - 142,025
- 2024 Estimate Population - 144,194
- 2024 Census Population - 147,194

TRAFFIC COUNTS

- Weaver Lake Road - 38,088 VPD
- Interstate 94 - 120,000 VPD