

# 3157 EAST ELWOOD STREET

PHOENIX, ARIZONA

  
TRANSWESTERN  
REAL ESTATE  
SERVICES

OFFICE TO INDUSTRIAL CONVERSION



# BUILDING SPECS



**TOTAL:**  
76,309 SF



**AVAILABLE:**  
±45,723 SF



**CEILING HEIGHT:**  
±21' CLEAR



**FREE STANDING**



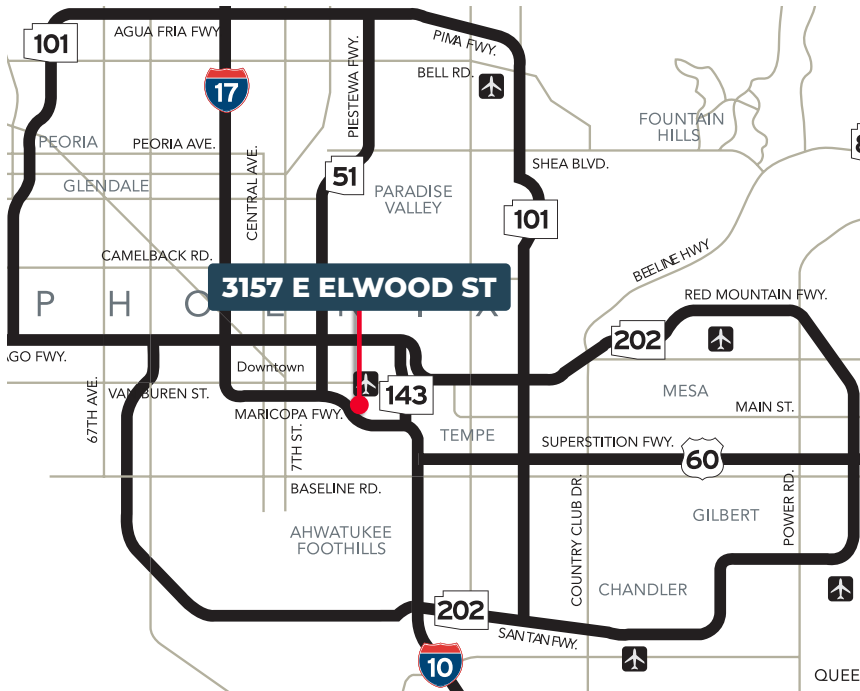
**LOCATION:**  
SKY HARBOR AIRPORT  
SUBMARKET



**LOADING:**  
1 DOCK-HIGH DOOR AND 1  
TRUCKWELL



**ZONING: A-2 ZONING**  
**INDUSTRIAL LIGHT MANUFACTURING**

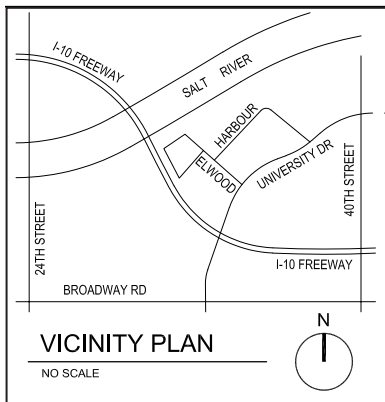
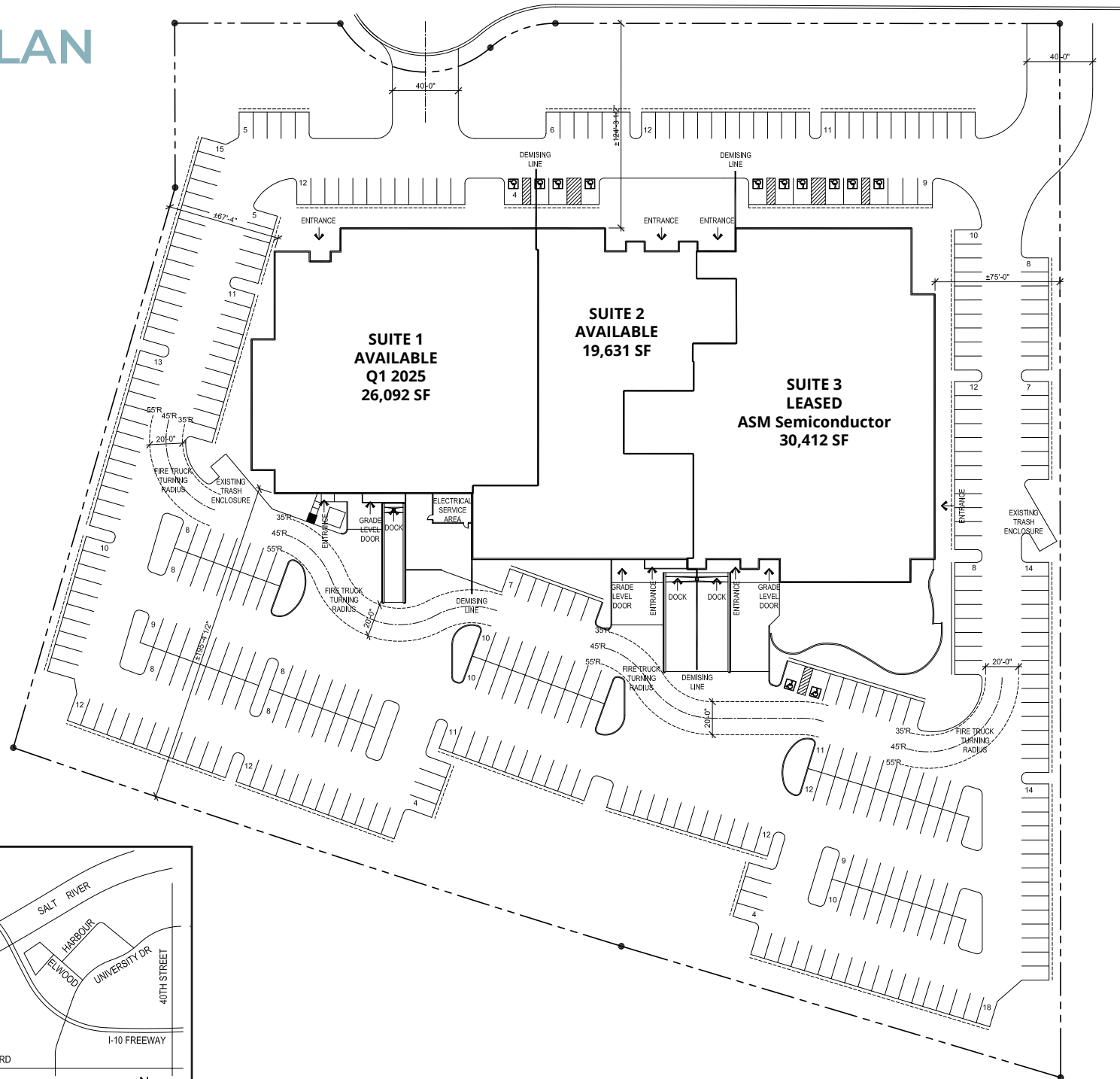


## AVAILABILITIES:

SUITE	SF	NOTES
1	±26,092 SF	<ul style="list-style-type: none"> <li>Available 4/1/25</li> <li>1 Grade Level Door</li> <li>1 Dock Door</li> </ul>
2	±19,631 SF	<ul style="list-style-type: none"> <li>Immediate Occupancy</li> <li>1 Grade Level Door</li> <li>1 Dock Door</li> </ul>



# SITE PLAN

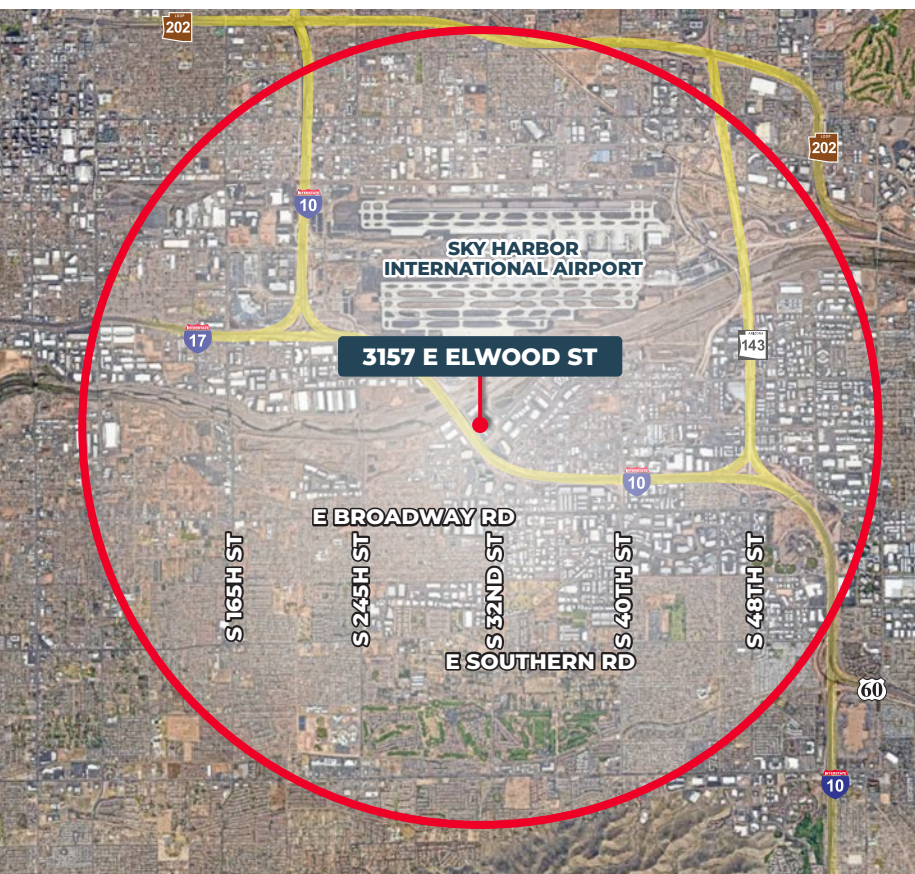


**SITE PLAN**

1/32" = 1'-0"







**FOR MORE INFORMATION:**

**MARK STRATZ**  
Managing Director  
602 386 1186  
mark.stratz@transwestern.com

2501 E. Camelback Rd  
Suite 1  
Phoenix, AZ 85016  
transwestern.com

