

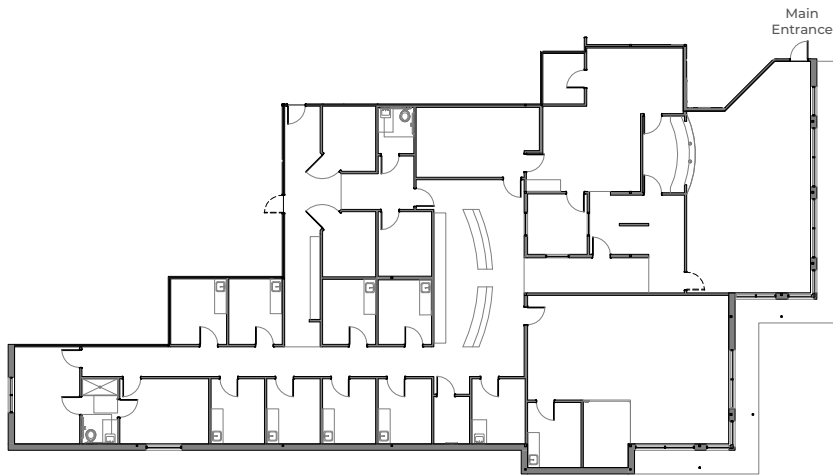
5734 SPOHN DR

CORPUS CHRISTI, TX 78414

MEDICAL SPACE | FOR SUBLEASE



SUITE 110 - 6,089 SF AVAILABLE



PROPERTY HIGHLIGHTS

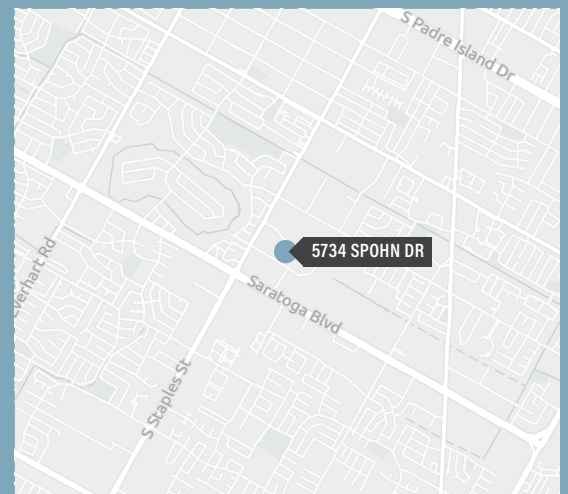
- 13,942 SF Office Building
- Built in 2004
- Easy Access
- 3.72 / 1,000 RSF Parking Ratio
- 52 Surface Spaces
- Amenity Rich Area
- Immediate Availability

AREA DEMOGRAPHICS

	10 Min	15 Min	20 Min
2023 Population	135,352	228,575	281,195
2028 Population	135,572	229,008	281,690
Growth 2023- 2028	0.03%	0.04%	0.04%
2023 Households	51,862	86,416	105,538
2023 Median HH Income	\$69,753	\$61,276	\$58,513
2023 Average HH Income	\$94,269	\$86,552	\$83,852

Contact COHEN HOWARD
214.446.4539
cohen.howard@transwestern.com

BOB KRASS
913.832.3113
bob.krass@transwestern.com



The information provided herein was obtained from sources believed reliable; however, Transwestern makes no guarantees, warranties or representations as to the completeness of accuracy thereof. The presentation of this property is submitted subject to errors, omissions, change of price or conditions, prior to sale or lease, or withdrawal without notice. Copyright © 2024 Transwestern.