



2909-2919 Anthony Lane, Saint Anthony, MN

Office/Warehouse Space available **for Lease or Sale**

Sam Svendahl

Senior Associate
+1 952 837 3025
sam.svendahl@colliers.com

Brian Doyle

Vice President
+1 952 837 3008
brian.doyle@colliers.com

1600 Utica Ave S, Suite 300
Minneapolis, MN 55416
+1 952 897 7700
colliers.com

Colliers



For Sale | 2909-2919 Anthony Lane

2909-2919 Anthony Lane is a 17,160 SF office / warehouse building situated on 1.07 acres of land. The building was built in 1964 and has been recently updated and very well maintained. There is approximately 12,672 total square feet of existing office space, and the warehouse portion of the facility features 12' clear height space of approximately 4,488 square feet. The warehouse is served by one (1) drive-in door, with the potential to create an additional 3,168 SF warehouse and second drive-in door. The property also comes with a large, hard-to-find 50+ stall parking lot.



Investment Highlights:

- Close proximity to area amenities, including Rosedale Center.
- Hard-to-find large parking lot.
- Excellent highway access.
- Nice corporate image.
- New roof and HVAC units
- Potential to expand warehouse space to 7,656 SF.

[Click Here to View
Drone Video](#)



2909-2919 Anthony Lane

Physical Description

Total Building Area:

17,160 SF Total
12,672 SF Office | 4,488 SF Warehouse
*Main Floor: 14,002 SF
*Warehouse Expandable to 7,656 SF

Property Address:

2909-2919 Anthony Lane
Saint Anthony, MN 55418

Year Built:

1965, Addition in 1980

PIDs:

06.029.23.44.0037 &
06.029.23.44.0039

Land Area:

1.07 Acres Total (46,608 SF)
PID ...0037L 0.53 Acres (22,905 SF)
PID ...0039: 0.54 Acres (23,703 SF)

Property Type:

Office / Flex

Construction:

Block

Parking:

Fifty (50)+ surface spaces; ability to expand

Zoning:

L-1 Light Industrial

Roof:

Replaced in 2015
15-year warranty in place

No. of Floors:

Two (2)

Floors:

Reinforced concrete (assumed) single story, approx. 3,158 SF on second floor

Loading:

One (1) drive-in door
*Ability to add second

Clear Height:

12'

HVAC:

Air conditioned throughout
Majority of units replaced within 5 years

Tax Information:

County:

Hennepin

Property Tax (Payable 2025)

PID ...0037: \$47,792.18

PID ...0039: \$5,976.28

Total Taxes: \$53,768.46

Taxes & OPEX:

\$4.72 per SF

Sale Price:

\$1,800,000

Asking Rent:

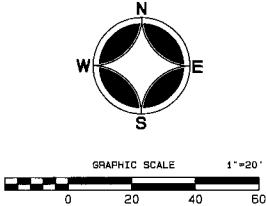
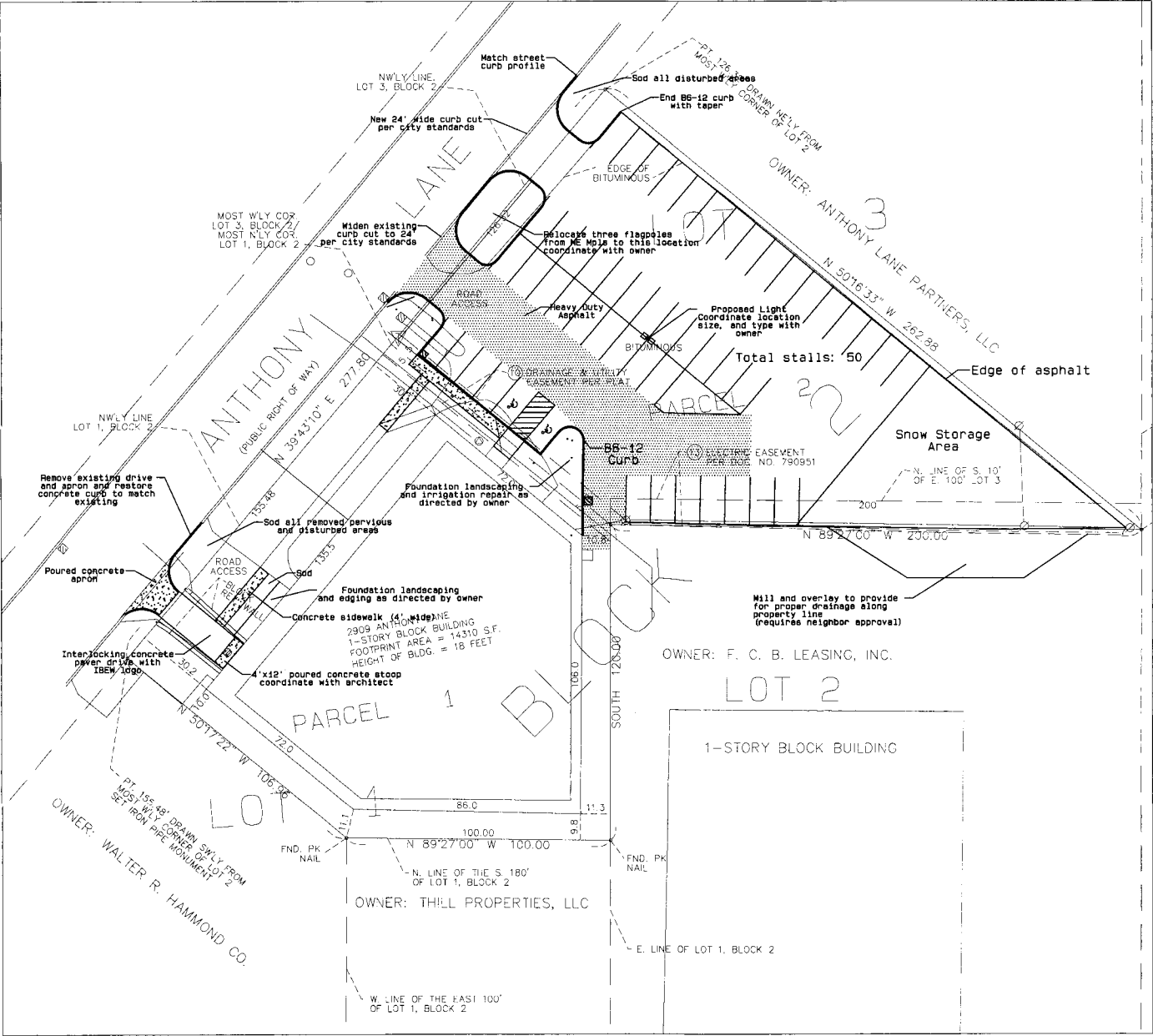
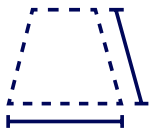
Negotiable



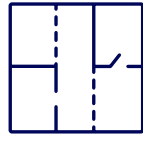
Property Photos



Site Plan



Floor Plan



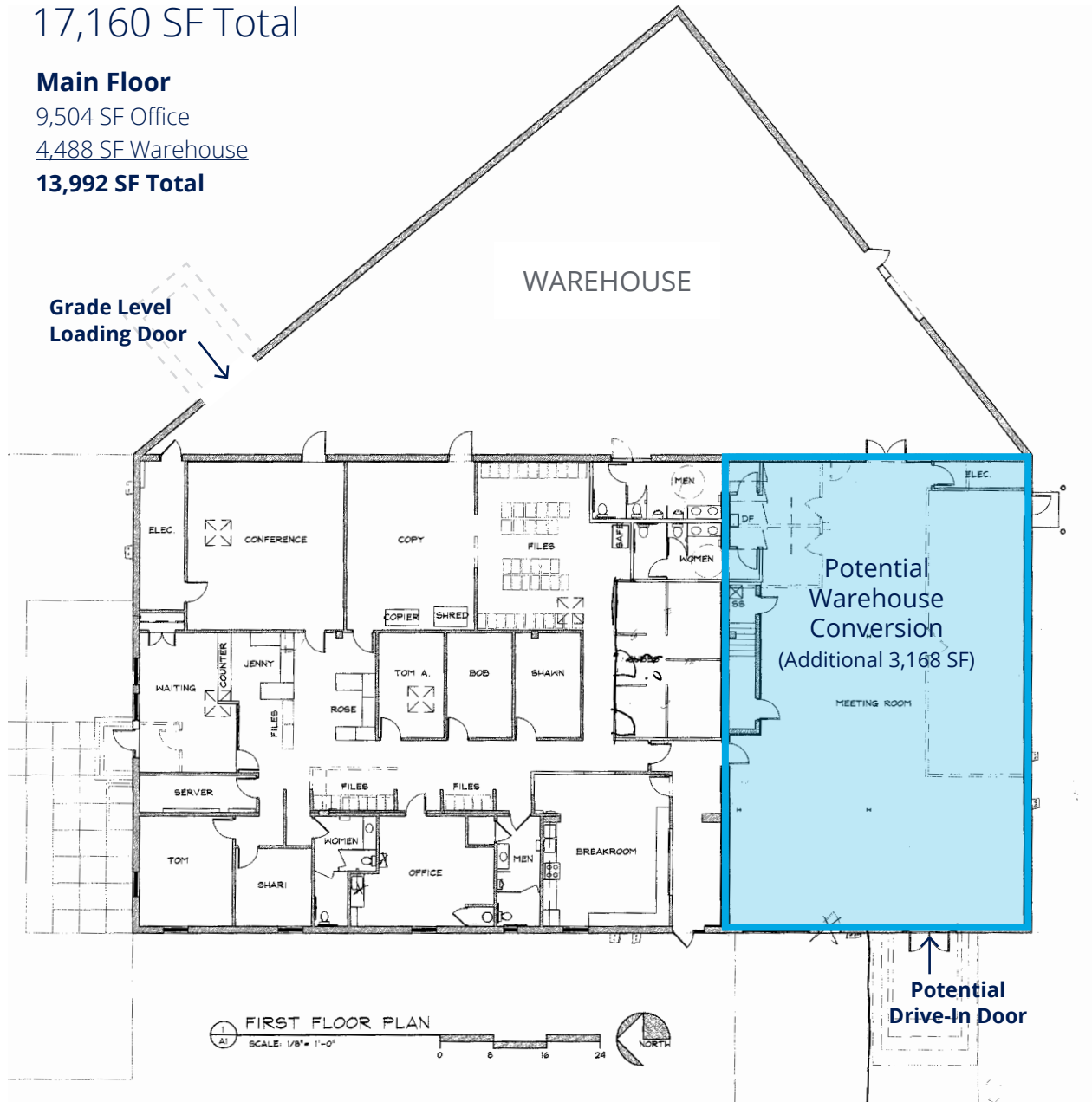
17,160 SF Total

Main Floor

9,504 SF Office

4,488 SF Warehouse

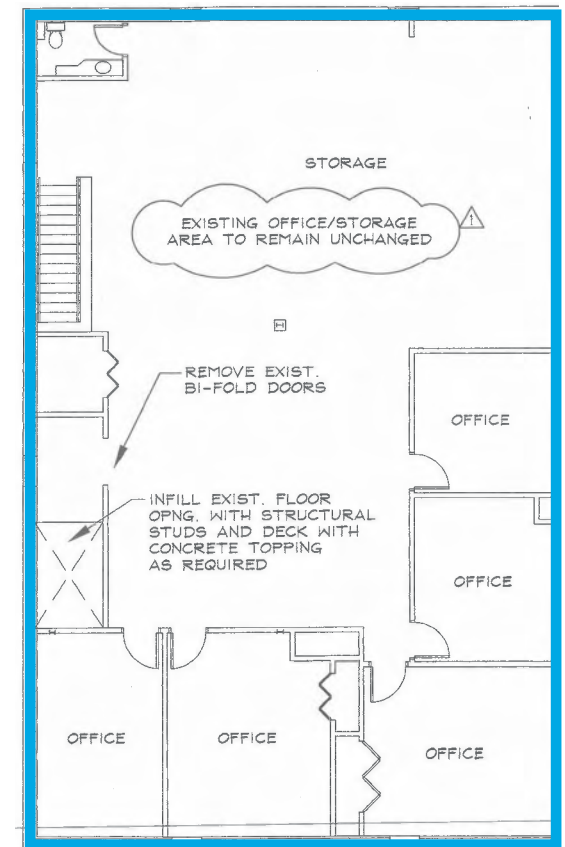
13,992 SF Total



Second Floor

3,168 SF Office

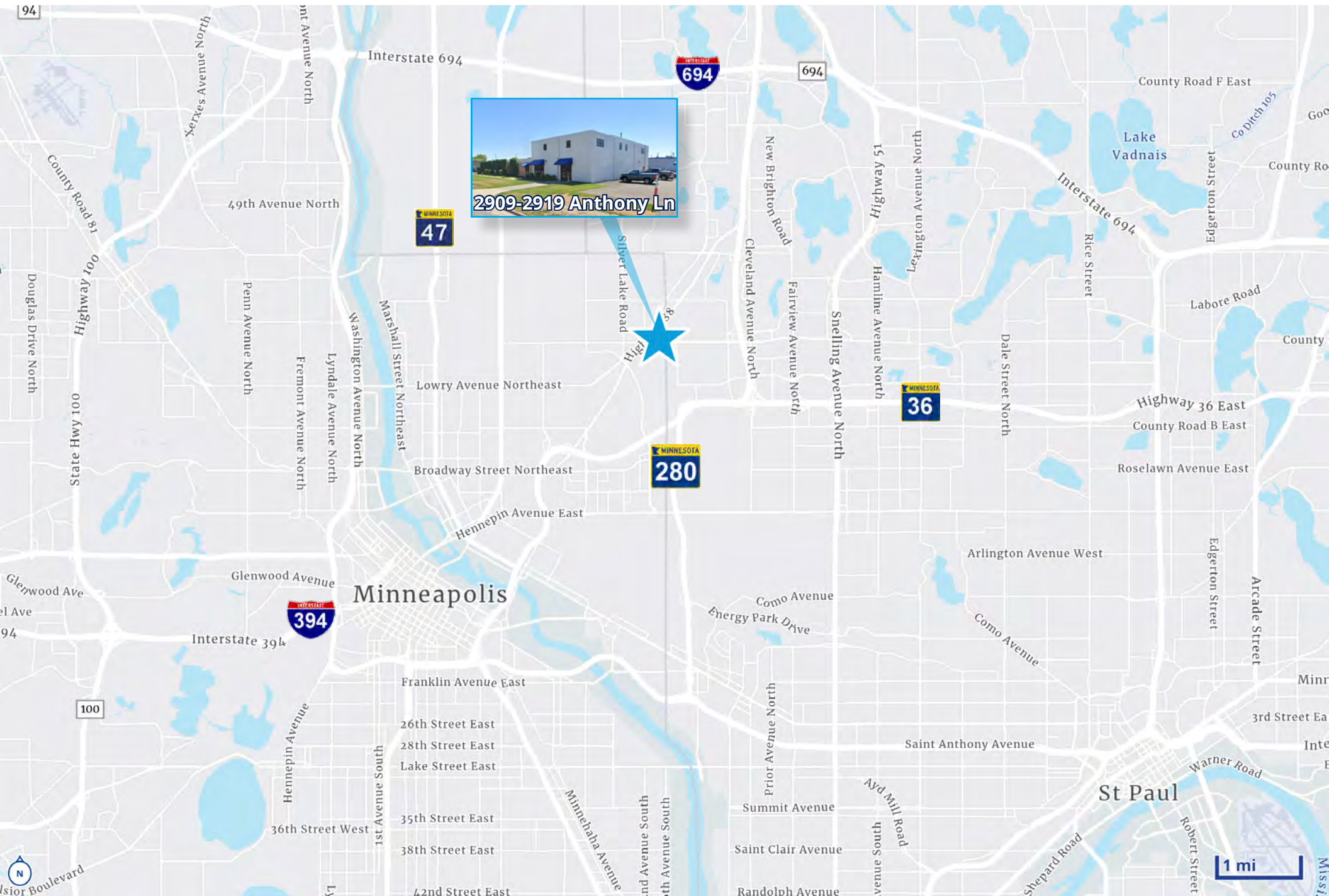
3,168 SF Total



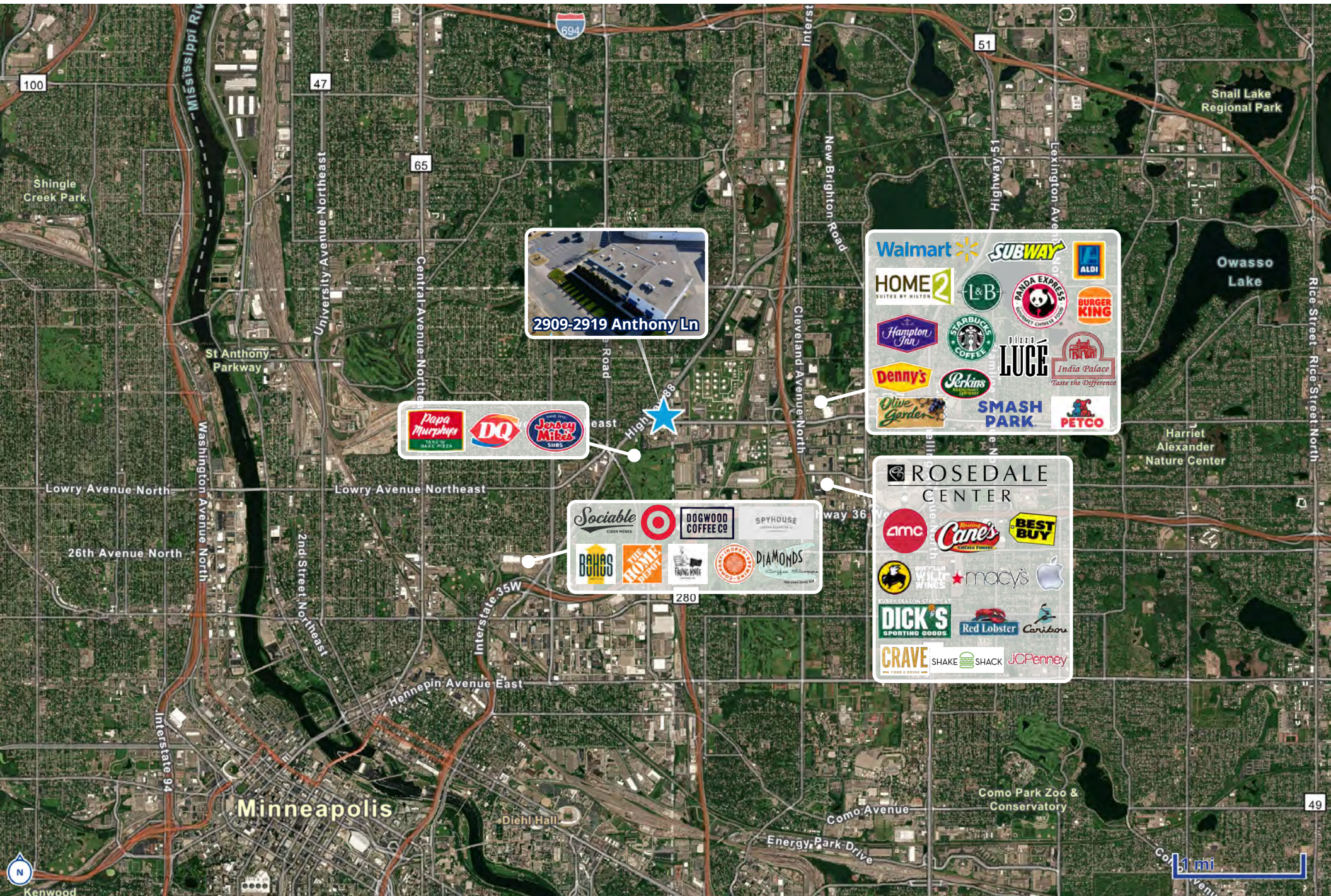
Property Aerial



Area Map



Area Amenities



**Colliers**

Accelerating success.

1600 Utica Ave S, Suite 300
Minneapolis, MN 55416
+1 952 897 7700
colliers.com

Sam Svendahl

Senior Associate
+1 952 837 3025
sam.svendahl@colliers.com

Brian Doyle

Vice President
+1 952 837 3008
brian.doyle@colliers.com

This document has been prepared by Colliers International for advertising and general information only. Colliers International makes no guarantees, representations or warranties of any kind, expressed or implied, regarding the information including, but not limited to, warranties of content, accuracy and reliability. Any interested party should undertake their own inquiries as to the accuracy of the information. Colliers International excludes unequivocally all inferred or implied terms, conditions and warranties arising out of this document and excludes all liability for loss and damages arising there from. This publication is the copyrighted property of Colliers International and/or its licensor(s). ©2025. All rights reserved.