



Colliers

## Industrial For Lease

### Contact:

#### Dan Donaldson

Executive Vice President  
+1 801 836 3600  
dan.donaldson@colliers.com

#### James Bullington

Executive Vice President  
+1 801 836 2400  
james.bullington@colliers.com

#### Colliers

2100 Pleasant Grove Blvd., Suite 200  
Pleasant Grove, UT 84062  
Main: +1 801 947 8300  
colliers.com

# 333 South Mill Pond Dr Lehi, Utah

## Freeway Visibility with Building Signage

### Property Information

- One (1) 16' x 16' grade level door
- Clear height - 28'
- Parking 2 stalls per 1000 SF
- Power - 480 volt 3 phase 225 amp panel & 208 volt 3 phase 225 amp panel
- Approx. 0.47 miles to Lehi Main Street I-15 interchange & 1.25 miles to American Fork Main Street I-15 interchange
- Zoned HC - Heavy Commercial
- Centrally located in Northern Utah County
- Convenient for vendors serving the west side of Utah County with quick access to Pioneer Crossing

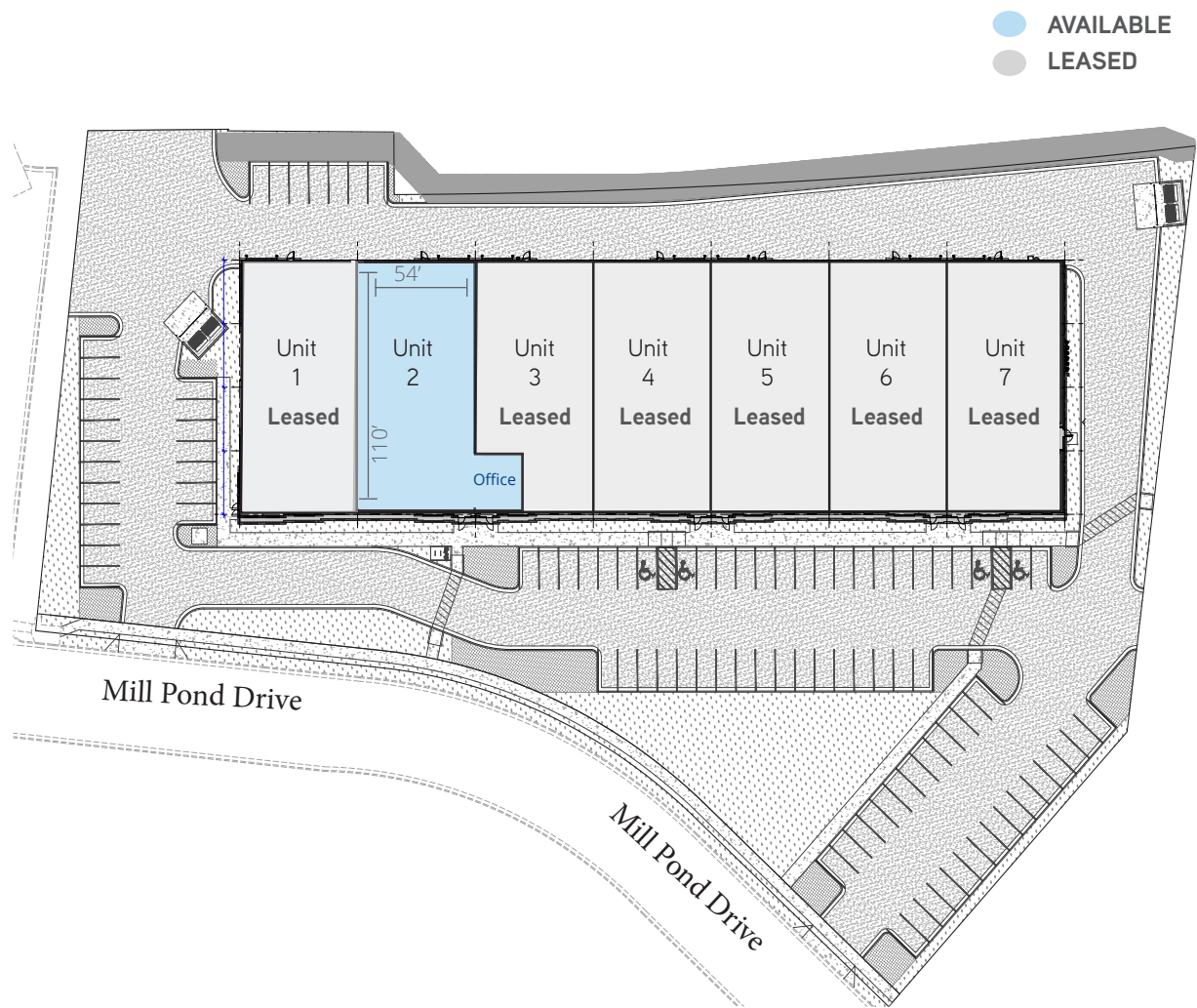
**Lease Rate: \$1.35 psf | NNN**

**Total Available: 6,505 SF**

Accelerating success.



# Site Plan

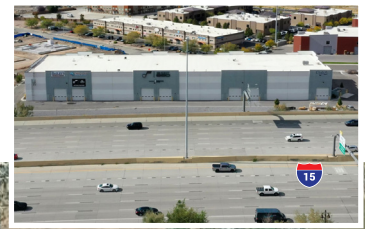




# Site Plan







**Colliers**  
 2100 Pleasant Grove Blvd., Suite 200  
 Pleasant Grove, UT 84062  
 Main: +1 801 947 8300  
 colliers.com

**Dan Donaldson**  
 Executive Vice President  
 +1 801 836 3600  
 dan.donaldson@colliers.com

**James Bullington**  
 Executive Vice President  
 +1 801 836 2400  
 james.bullington@colliers.com