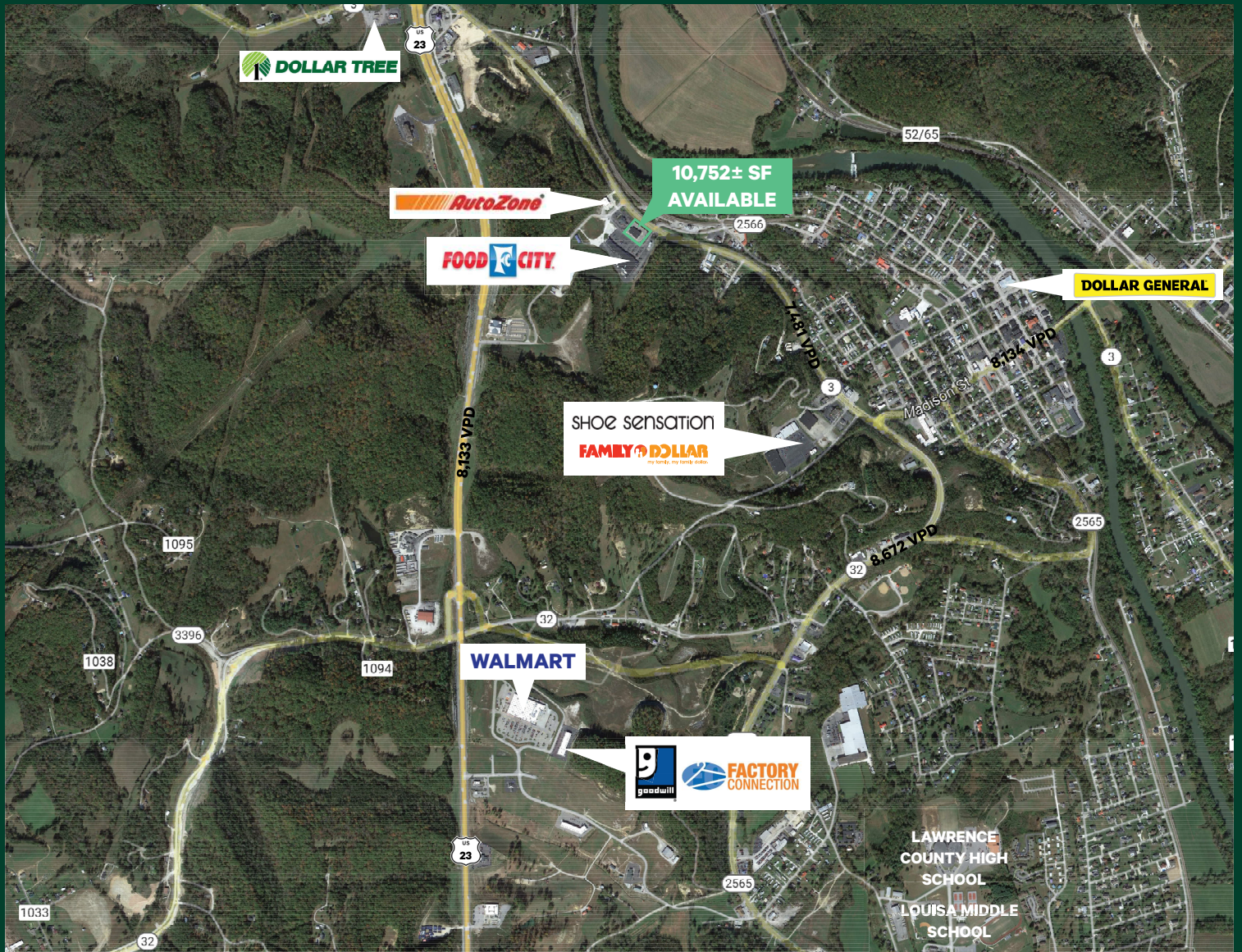


Freestanding Building

Corner Location

4311 Highway 2565
Louisa, Kentucky



Retail Property

4311 Highway 2565 | Louisa, Kentucky

For Sublease

Property Features

- + 10,752± square feet available
- + Pylon signage
- + Outlot fronting Food City
- + Sublease term expiration: 4/30/2025
- + Excellent visibility
- + Asking rate: \$6.50/SF/YR
- + Located at the signalized corner of Hwy 2565 & Old U.S. 23



2023 Estimated Demographics	5 Miles	10 Miles	15 Miles
Population	9,956	17,894	33,552
Daytime Population	10,311	16,602	30,978
Average Household Income	\$57,477	\$58,006	\$61,144

Contact Us

Clay Hunt

First Vice President

+1 502 412 7607

clay.hunt@cbre.com

Robert Schwartz

Senior Vice President

+1 502 412 7606

robert.schwartz@cbre.com

© 2024 CBRE, Inc. All rights reserved. This information has been obtained from sources believed reliable but has not been verified for accuracy or completeness. CBRE, Inc. makes no guarantee, representation or warranty and accepts no responsibility or liability as to the accuracy, completeness, or reliability of the information contained herein. You should conduct a careful, independent investigation of the property and verify all information. Any reliance on this information is solely at your own risk.