

MOSSIEN
ASSOCIATES
ARCHITECTS, P.C.

CONSULTANTS TO
THE BUILT ENVIRONMENT

585-262-6000
70 LINDEN OAKS | SUITE 110
ROCHESTER, NY 14625-2804
WWW.MOSSIEN.COM



**QUATELA
WELLNESS
CENTER**

NY STATE ROUTE 96
VICTOR, NEW YORK

SCHEMATIC DESIGN

DRAWING REVISIONS:

MARK:	DATE:	DESCRIPTION:

It is a violation of the law for any person, unless acting under the direction of a licensed architect, to alter any item in any way. If an item is altered, the altering architect shall affix to his item the seal and the notation "altered by" followed by his signature and the date of the alteration, and a specific description of the alteration.

DRAWN: JMA	PM: DEM	CHECKED:
DATE: 09/27/2017		

SHEET TITLE:
SECOND FLOOR PLAN

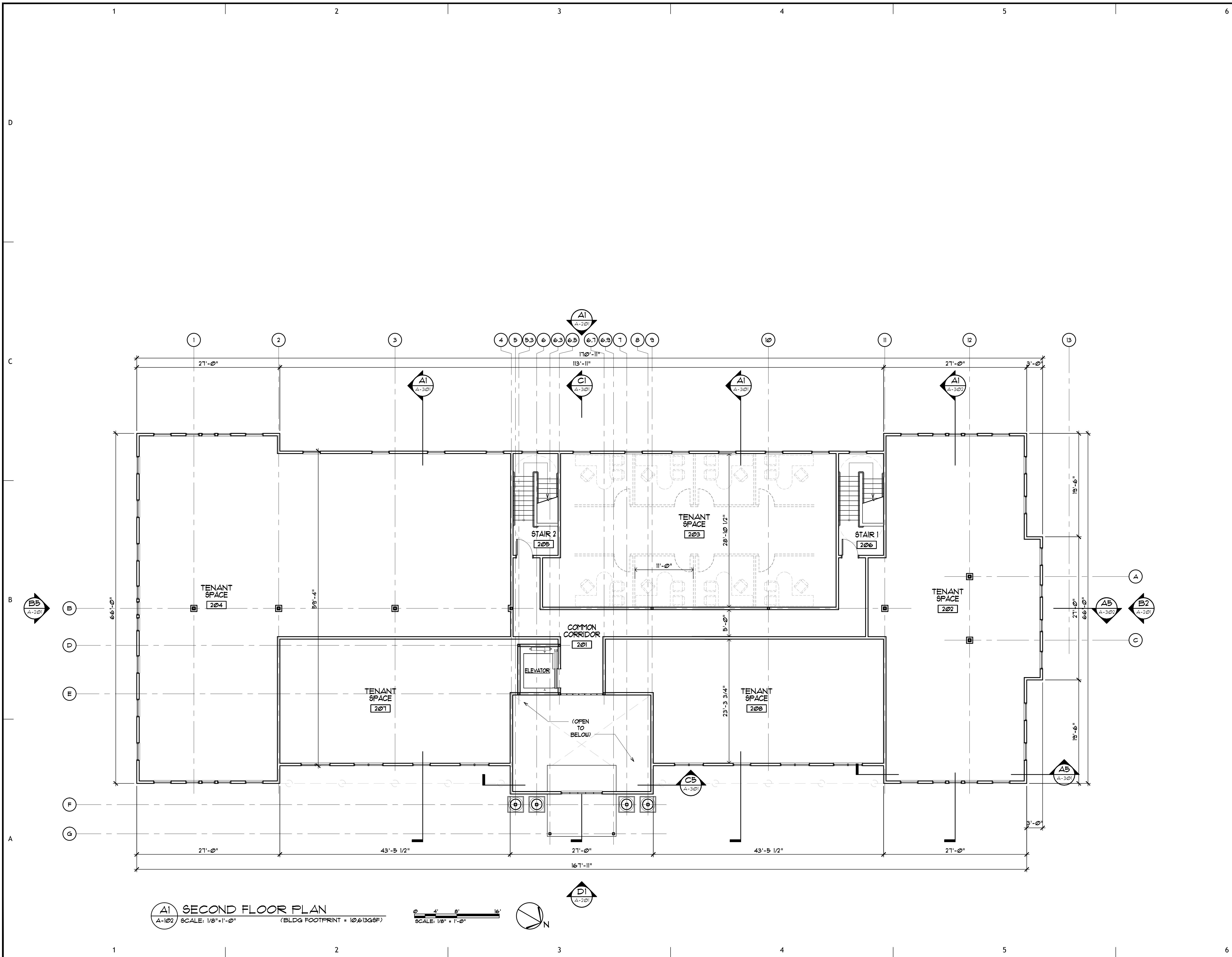
PROJECT NUMBER

2017-014

SHEET NUMBER

A-102

© 2017 DANIEL E. MOSSIEN



A1 SECOND FLOOR PLAN
A-102 SCALE: 1/8" = 1'-0" (BLDG FOOTPRINT = 10,613GSF)

