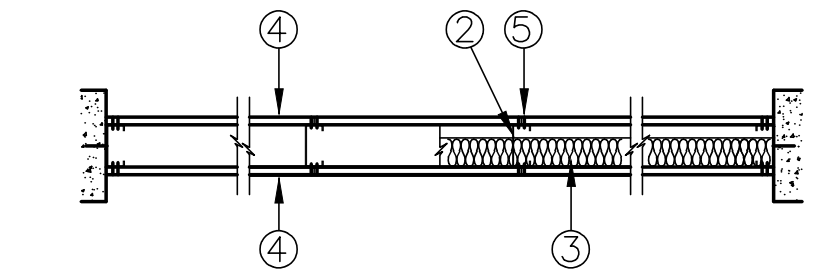
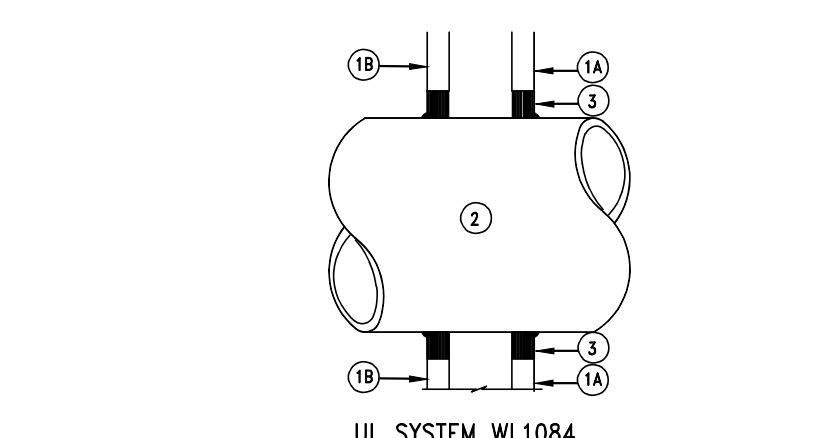


UL SYSTEM NO. U465
Nonbearing Wall Rating - 1 HR.



- Floor and Ceiling Runner - (Not Shown) - Channel shaped runners, 25 M56 (min) galv. steel 1 1/4 in. high, return legs 3 5/8 in. wide (min), attached to floor and ceiling with fasteners 24 in. o.c.
 - Steel Studs - 3 5/8 in. wide (min) 1-1/4 in. legs, 3/8 in. return, formed of 25 M56 (min) galv. steel max. stud spacing 24 in. o.c.
 - Batts and Blankets* - (Optional) - Mineral wool or glass fiber batts partially or completely filling stud cavity.
 - Wallboard, Gypsum* - 5/8 in. thick, 4 ft. wide, attached to steel studs and floor and ceiling track with 1 in. long, Type S self-tapping steel screws spaced 8 in. o.c. along vertical edges, and 12 in. o.c. in the field of the board, joints oriented vertically and staggered on opposite sides of the assembly. When attached to furring channels with 1 in. long, type 5 steel screws spaced 12 in. o.c.
- Boral Gypsum, Inc. - Type BG-C, DDDG3, DDE2 or DDNI.
 Canadian Gypsum Co., Ltd. - Types C, SCX, SHX, WRX.
 Eagle-Gypsum Products - Type EG-C or EG-XI.
 Georgia-Pacific Corp. - Type DGG, GFFS-3, GFFS-6, or GFFS-C.
 National Gypsum Co. - Types FR, FSH, FSH-G, WR.
 Pabco Gypsum - Type C, PG-3, PG-5, PG-4, or PG-C.
 Republic Gypsum Co. - Type RG-C.
 Standard Gypsum Corp. - Type SGG, SG-C, or SGG-6.
 Temple-Inland Forest Products Corp. - Types T, TP-3, VPB-Type T
 United States Gypsum Co. - Types AR, C, FCV, IP-XI, IP-X2, SCX, SHX, Westros Industries Ltd. - Type Westros Fireboard.
- Wallboard, Gypsum* - (As an alternate to Item 4) - Nom. 3/4 in. thick, installed as described in Item 4 w/ screw length increased to 1-1/4 in.
 Canadian Gypsum Company - Type AR.
 United States Gypsum Co. - Type AR.
 Yeso Panamericano SA de CV - Type AR
 - Wallboard, Gypsum* - (As an alternate to Item 4 and 4A) - Nom. 5/8 in. thick, installed as described in Item 4. Joint covering (Item 5) not req.
 Canadian Gypsum Company - Type H5X.
 United States Gypsum Co. - Type H5X.
 Yeso Panamericano SA de CV - Type H5X
- Joint Tape and Compound - Vinyl dry or pre-mixed joint compound, applied in two coats to joints and screw heads: paper tape, 2 in. wide, embedded in the first layer of compound over all joints. As an alternate, nominal 3/32 in. thick gypsum veneer plaster may be applied to the entire surface. Classified veneer baseboard. Joints reinforced.
 - Furring Channel - (Optional - Not Shown) - Resistant 25 M56 galv. steel furring channels spaced vertically max 24 in. o.c., flange portion attached to each intersecting stud with 1/2 in. long type 5-12 panhead steel screws.
- *Bearing the UL Classification Marking

UL SYSTEM NO. W-L-1084
F Rating - 1 HR.
T Rating - 0 HR.

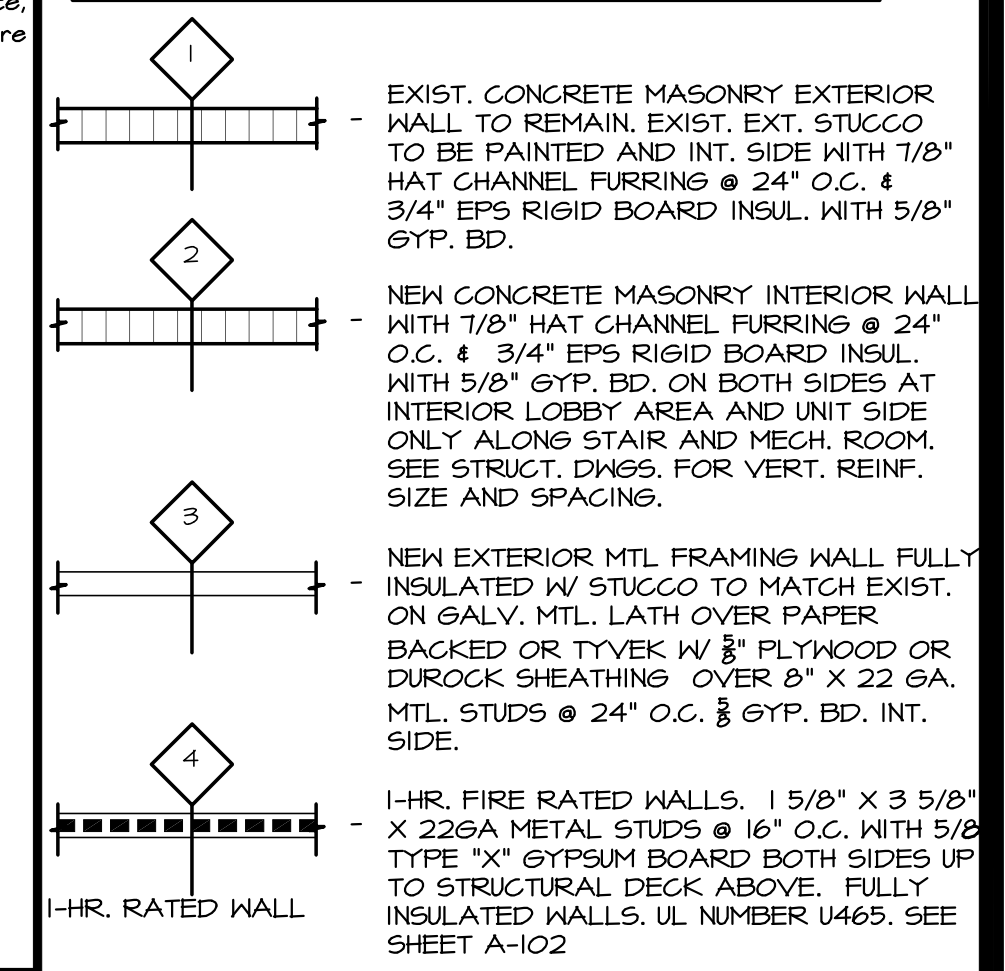


- 3M Fire Protection Products This material was extracted by 3M Fire Protection Products from the 1997 edition of the UL Fire Resistance Directory.
- 357 System No. W-L-1084 F Rating-1 Hr T Rating-0 Hr
- Wall Assembly-The fire rated gypsum wallboard/stud wall assembly shall be constructed of the materials and in the manner specified in the individual U300 or U400 Series Wall and Partition Designs in the UL Fire Resistance Directory and shall include the following construction features:
 A. Studs-Wall framing may consist of either wood studs or steel channel studs. Wood studs to consist of nom 2 by 4 in. lumber spaced 16 in. o.c. Steel studs to be min 3-5/8 in. wide and spaced max 24 in. o.c.
 B. Wallboard Gypsum*-Nom 5/8 in. thick gypsum wallboard, as specified in the individual Wall and Partition Design. Diam of opening is 1-1/2 in. larger than the outside diam of pipe.
 2. Through-Penetrant-One metallic pipe, conduit or tubing to be centered within the firestop system. An annular space of 3/4 in. is required within the firestop system. Pipe, conduit or tubing to be rigidly supported on both sides of wall assembly. The following types and sizes of metallic pipes, conduits or tubing may be used:
 A. Steel Pipe-Nom 12 in. diam (or smaller) Schedule 10 (or heavier) steel pipe.
 B. Conduit-Nom 6 in. diam (or smaller) electrical metallic tubing or steel conduit.
 C. Copper Tubing-Nom 6 in. diam (or smaller) Type L (or heavier) copper tubing.
 D. Copper Pipe-Nom 6 in. diam (or smaller) Regular (or heavier) copper pipe.
 3. Fill, Void or Cavity Material*-Sealant-Min 5/8 in. thickness of fill material applied within annular space, flush with both surfaces of wall assembly. Minnesota Mining & Mfg. Co.-FB-2000+
 *Bearing the UL Classification Marking

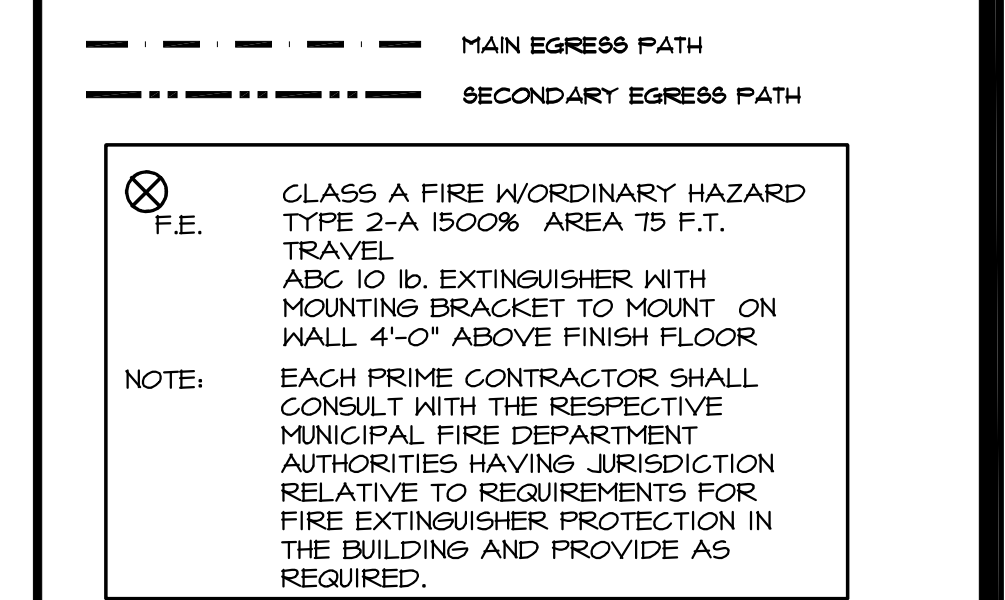
GENERAL NOTES

- GENERAL CONTRACTOR SHALL FAMILIARIZE HIMSELF WITH ALL EXISTING SITE CONDITIONS PRIOR TO SUBMITTAL OF BASE BID. NOTIFY ALL DISCREPANCIES TO THE ARCHITECT/ ENGINEER FOR FURTHER ACTION.
- GENERAL CONTRACTOR SHALL CONTACT F.P. & L AND ALL OTHER UTILITY COMPANIES FOR EXACT LOCATION OF NEW UTILITY CONNECTIONS.
- DO NOT SCALE DRAWINGS, WHERE ITEMS ARE NOT DIMENSIONED, THE CONTRACTOR SHALL TAKE ADEQUATE MEASUREMENTS TO INSURE PROPER INSTALLATION AND EXECUTION OF WORK THAT COMPLIES WITH GENERAL INTENT OF THE PROJECT.
- GENERAL CONTRACTOR AND SUBCONTRACTORS SHALL VERIFY AND COORDINATE ALL DIMENSIONS WITH SHOP, ELECTRICAL, MECHANICAL, PLUMBING AND STRUCTURAL DWGS. DRAWINGS AS APPLICABLE PRIOR TO START OF CONSTRUCTION, AND INSURE THAT ALL REQUIRED CLEARANCES FOR INSTALLATION AND MAINTENANCE OF ALL EQUIPMENT IS PROVIDED AND MAINTAINED.
- THIS PROJECT IS FULLY UNDER THE JURISDICTION, PROVISIONS AND RULES OF THE F.B.C. 2004 AND APPLICABLE CODES AND ORDINANCES, TO THE BEST OF OUR KNOWLEDGE THESE PLANS AND SPECIFICATIONS ARE IN COMPLIANCE WITH MINIMUM STANDARDS OF THE ABOVE REFERENCED APPLICABLE CODES. S.C. AND SUBCONTRACTORS ARE REQUIRED TO APPLY ALL CODES RELATED TO THEIR FILED AT TIME OF CONSTRUCTION.
- ALL INTERIOR PARTITIONS SHALL BE INSULATED W/ 3 1/2" FIBERGLASS SOUND ATTENUATING BATT INSULATION.
- ALL GYPSUM BOARD WALLS SCHEDULED TO RECEIVE PAINT SHALL HAVE LIGHT SPRAY TEXTURE.
- EXTERIOR MASONRY & CONG. WALLS SCHEDULED TO RECEIVE GYP. BD. SHALL HAVE 1/8" HAT CHANNEL FURRING @ 24" O.C. & 3/4" EPS RIGID BOARD INSUL.
- PROVIDE & INSTALL WOOD BLOCKING AT ALL BATHRM. TOILETS & TUB FIXTURES HANDICAP GRAB BAR LOCATIONS AS REQUIRED BY THE FAIRHOUSING ACT REQUIREMENTS.
- DOOR HARDWARE TO MEET ALL ACCESSIBILITY CODES.
- PROVIDE CLOSURES AT ALL RATED DOORS.

WALL LEGEND



EGRESS LEGEND



C A G
Caribeño
Architectural
Group, Inc
FLORIDA CERTIFICATE #AR 0017819
13 E. MELBOURNE AVE. UNIT C
MELBOURNE, FLORIDA 32901
PHONE (321) 508-5165
FAX (321) 773-3069

CLIENT: **MODERN ONE, LLC.**
3001 OCEAN DRIVE, SUITE 202
VERO BEACH, FL. 32963

PROJECT NAME: **MODERN AGE SHELL BLDG. RENOVATION**
AT INTERSECTION OF 21ST. & HWY 60
INDIAN RIVER COUNTY FLORIDA
SHEET TITLE: **SECOND FLOOR PLAN N.E. BLDG.**

DESIGNER: Kenneth R. Lebron
AR 0017819

REVISION	DATE	BY	DESCRIPTION
1			
2			
3			
4			
5			
6			

PROJECT NO. CAG_08-067
DATE: 05-06-09
DRAWN: JLC
CHECKED: KRL
SCALE: AS SHOWN
SHEET No:

1 SECOND FLOOR PLAN NORTH EAST BLDG.
SCALE: 3/32" = 1'-0"

2 UL DESIGNS
SCALE: N.T.S.

3 LEGENDS AND NOTES
SCALE: N.T.S.

A-102NE