

Your Business Here!

CLASSIC PROPERTIES® *For Lease*

Unique and prime development opportunity located at the corner of Glenmaura National Blvd and Montage Mountain Rd.

This property is right next door to major attractions such as a ski resort, concert venue, shopping mall, baseball field, and multiple hotels.

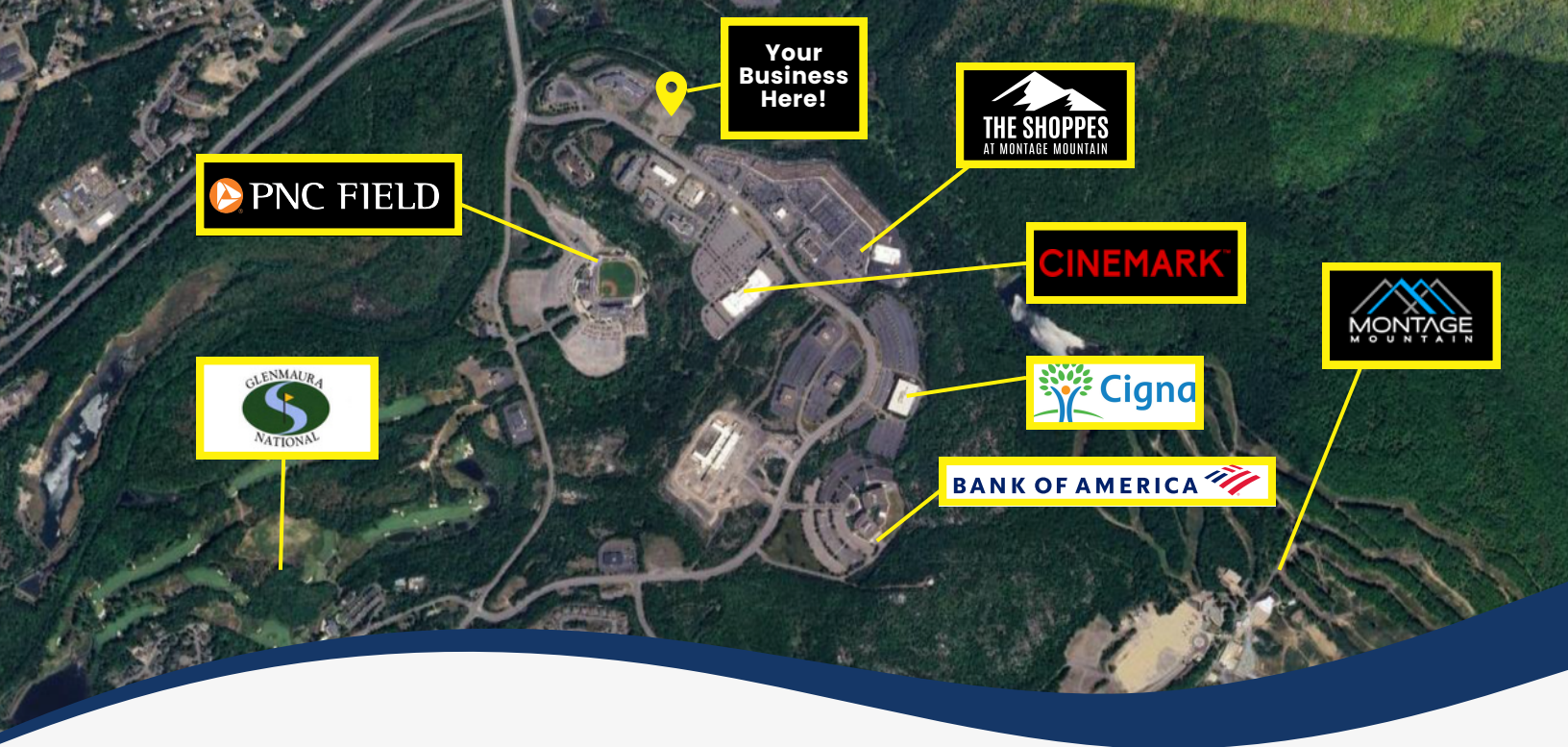


Built to Suit!

- 3.32 Acres
- 500 ft of road frontage
- High-traffic area
- Easy access from I-81
- Built to client specifications



Lot 1B Glenmaura National Boulevard, Moosic, PA 18507



Built to Suit

Property Features :

- Close to Attractions
- Endless Possibilities
- 3.32 Buildable Acres
- 500 ft of frontage
- Customizable buildout
- Approximately 6 miles from airport



Jody Ferdyn

☎ (570) 885-3739

✉ jferdyn@classicproperties.com



Maurya Moran Wetzel

☎ (619) 208-5538

✉ maurya.moran@gmail.com

This unique property is in close proximity to Montage Mountain Ski Resort, The Pavilion at Montage, Shoppes at Montage, AAA baseball stadium, Glenmaura National Golf Club, hotels, restaurants, theaters, and a thriving residential development.

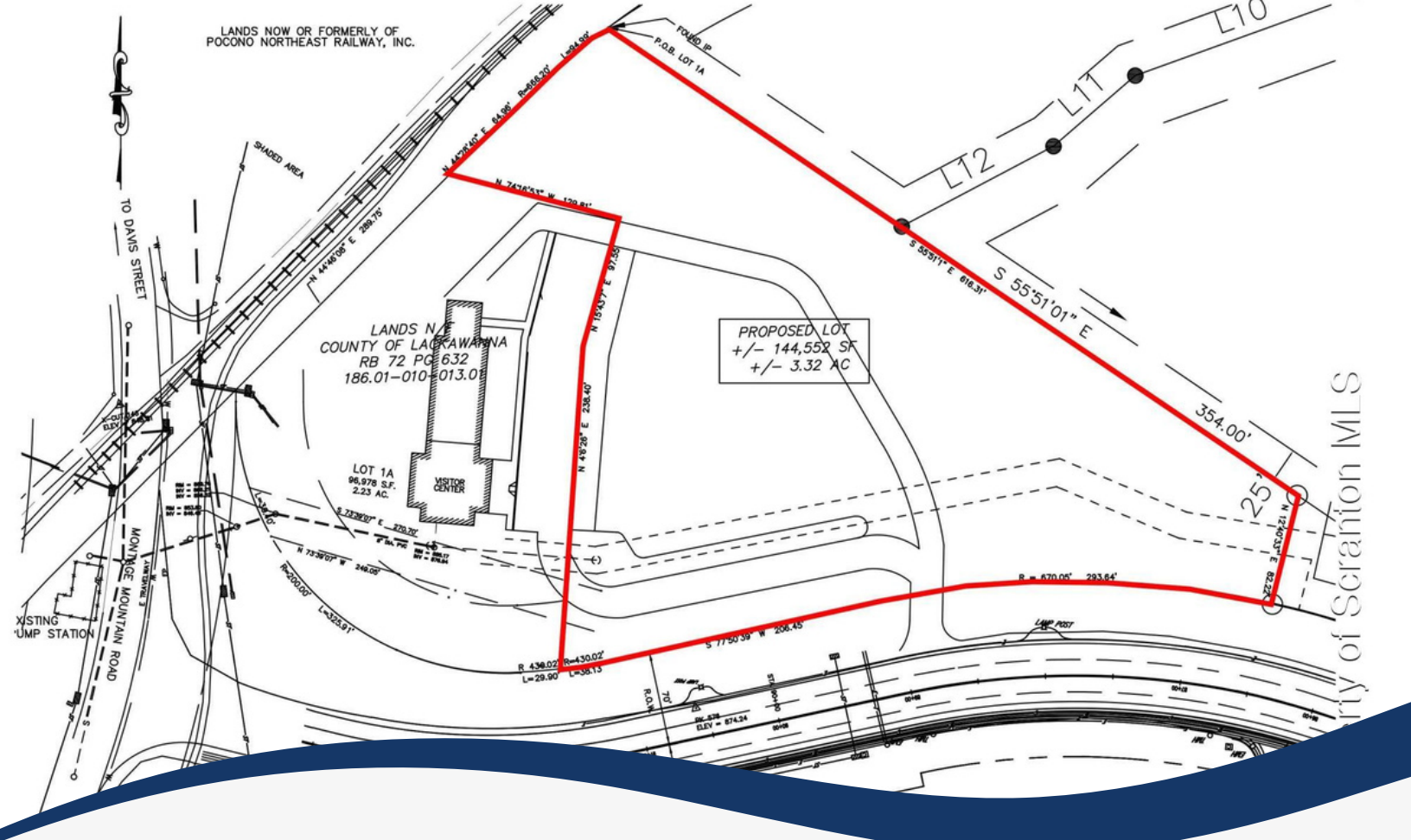
Developers seek tenant for a "build to suit" retail, office, or restaurant space. The envisioned space will be constructed according to the tenant's specifications. Introduce your business to this popular area.

All utilities are at building site: water, electricity, natural gas, sewer, cable & telephone. Lease amount will be determined based on the specific usage and length of the lease.

We are eager to work with the right tenant to bring their vision to life in this prime location. Don't miss out on this chance to be part of the growth in this highly sought-after area!

Contact Us!

☎ Office: 570-587-7000



Build Your Business Here!

Make your commercial dreams a reality with this once-in-a-lifetime lease opportunity.



Jody Ferdyn
 (570) 885-3739



Maurya Moran Wetzel
 (619) 208-5538

Scan QR Code for Property Website:



jferdyn@classicproperties.com

maurya.moran@gmail.com