



north loop

MINNEAPOLIS



Minneapolis' North Loop is the city's Cinderella story; this once undefined industrial area is now one of the hippest up-and-coming neighborhoods in the country.

- Seated on the Mississippi River just north of the CBD, creative businesses and tech firms are flocking to the North Loop to transform its warehouses, factories, and livestock facilities into experiential office spaces and leverage its well-connected transit and high walkability (Walk Score 93)
- It's the city's fastest-growing neighborhood, attracting young professional apartment dwellers, national retailers, chef-forward restaurants, craft breweries, and trendy coffee shops
- Named "One of America's Best Hipster Neighborhoods" by Forbes Magazine and was listed among 25 places in the world that avid travelers should visit by Fodors Travel Guide
- Overall A+ Niche rating, ranking highest in the nightlife, health & fitness, and commute categories
- The North Loop is home to top Minneapolis attractions and destinations, including Target Field, home of the Minnesota Twins as well as a light rail station with direct access to MSP airport, the University of Minnesota, downtown St. Paul US Bank Stadium, Allianz Field, and beyond
- The Minneapolis-St. Paul metro area is home to 19 Fortune 500 companies, one of the highest rates per capita in the country



By the Numbers



93
WALK SCORE



85
TRANSIT SCORE



37
MEDIAN AGE



68%
EDUCATIONAL ATTAINMENT*



\$136,865
AVG HOUSEHOLD INCOME*



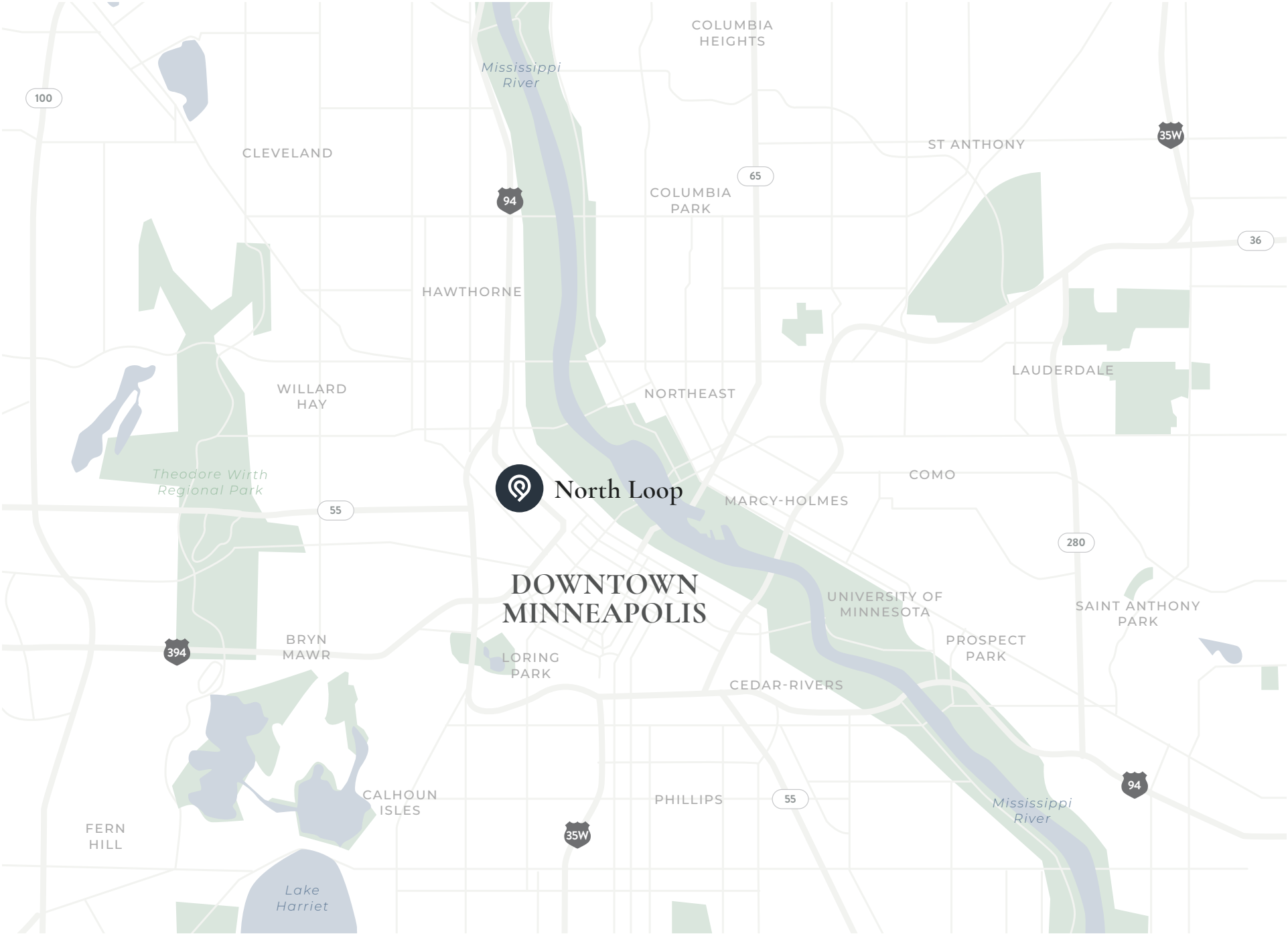
31,282
POPULATION*



292,531 SF
TOTAL NEIGHBORHOOD GLA OWNED

*(1-MILE)





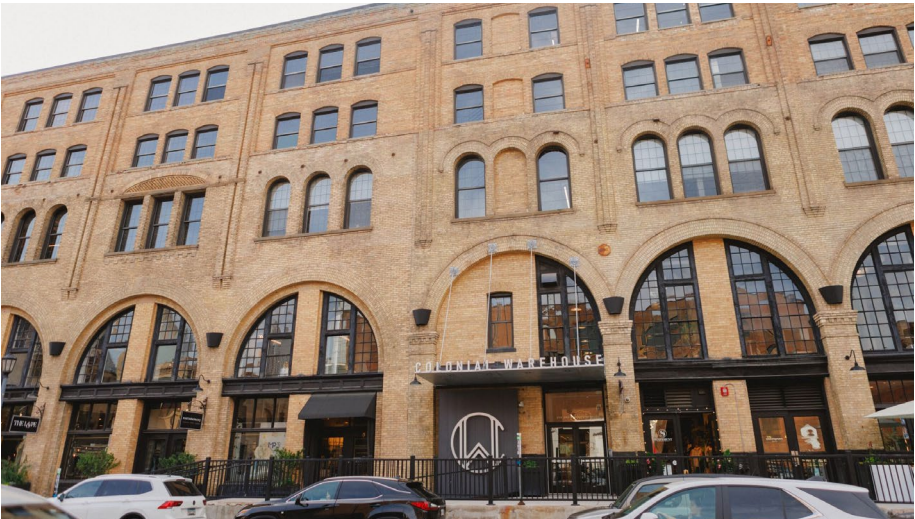
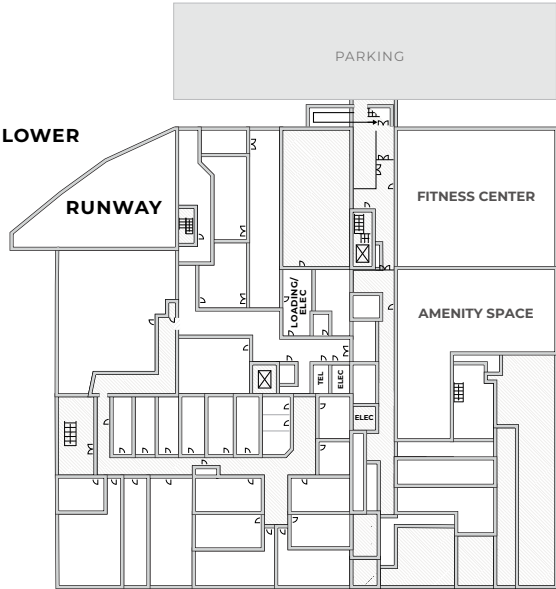
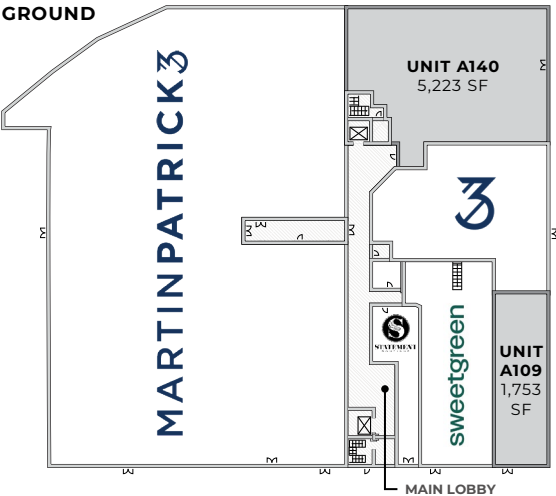




Colonial Warehouse

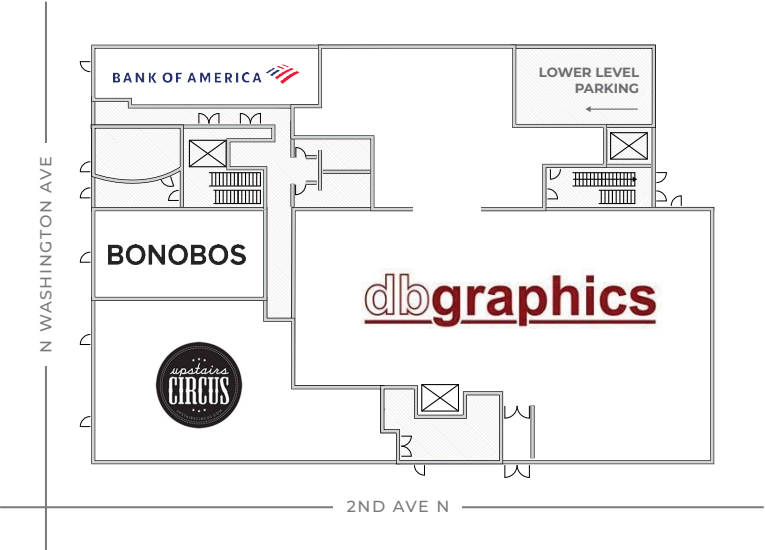
212 3RD AVE N

AVAILABLE LEASED



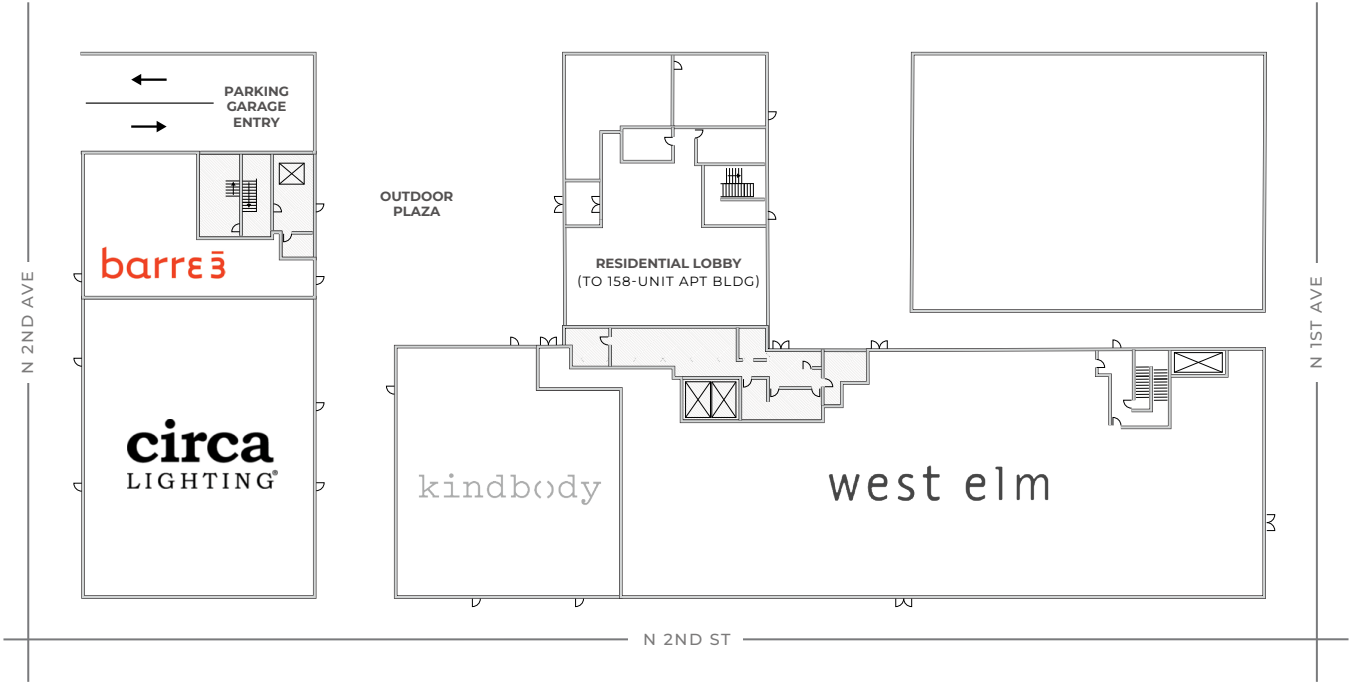
The Washington
125 N WASHINGTON AVE

AVAILABLE LEASED



Second + Second
128 N 2ND ST

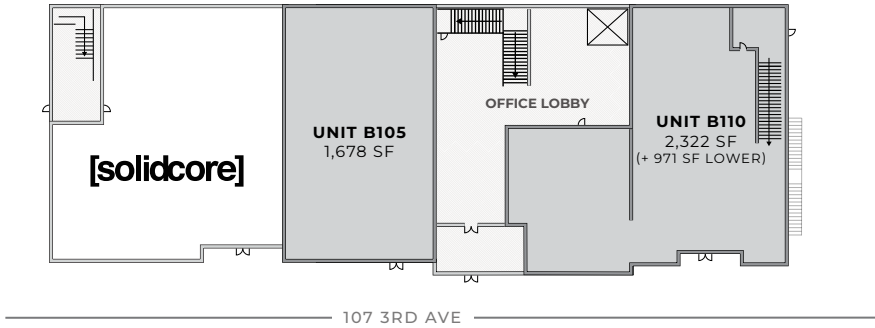
AVAILABLE LEASED



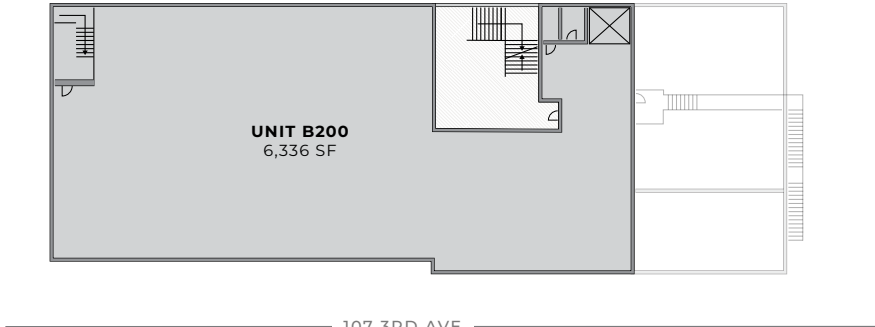
The Saxon

107 3RD AVE

AVAILABLE LEASED



GROUND



LEVEL 2



LEVEL 3



ASANA PARTNERS

Lara Silversmith
lsilversmith@asanapartners.com

ELEMENT CRE (RETAIL)

JoAnna Hicks
joanna@elementmn.com

CUSHMAN & WAKEFIELD (OFFICE)

Tom Tracy
tom.tracy@cushwake.com

Katie Tufford
katie.tufford@cushwake.com

