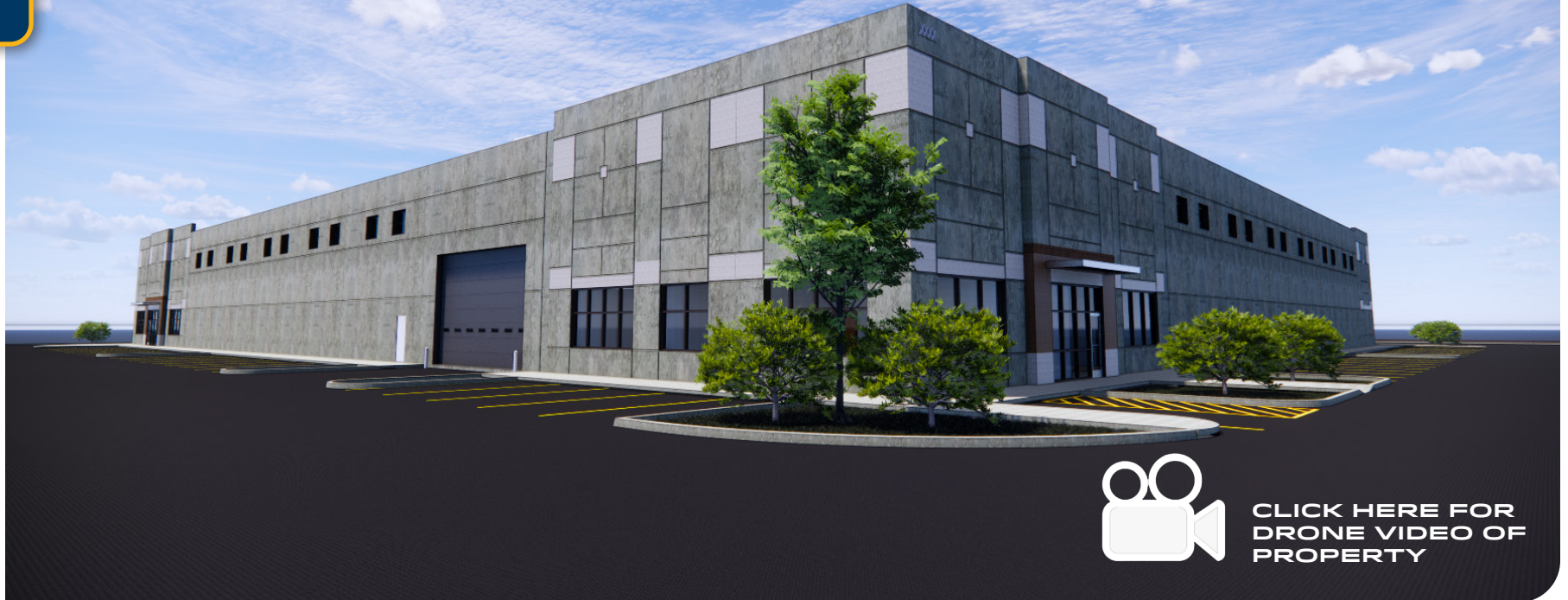




FOR LEASE

NEW CONSTRUCTION
APRIL 2025 DELIVERY



CLICK HERE FOR
DRONE VIDEO OF
PROPERTY

MEDFORD INDUSTRIAL CENTER

Industrial Space Available

67,500 SF Warehouse Divisible to 22,500 SF
3 Suites - Call Brokers for Pricing

Avenue C @ 7th Street, White City, OR 97503

- Concrete tilt warehouse
- Flexible layouts available
- Fenced yard area

DAN SLEVIN

Senior Vice President | Licensed in OR
503-260-1833 | dan@capacitycommercial.com

DAVE ELLIS

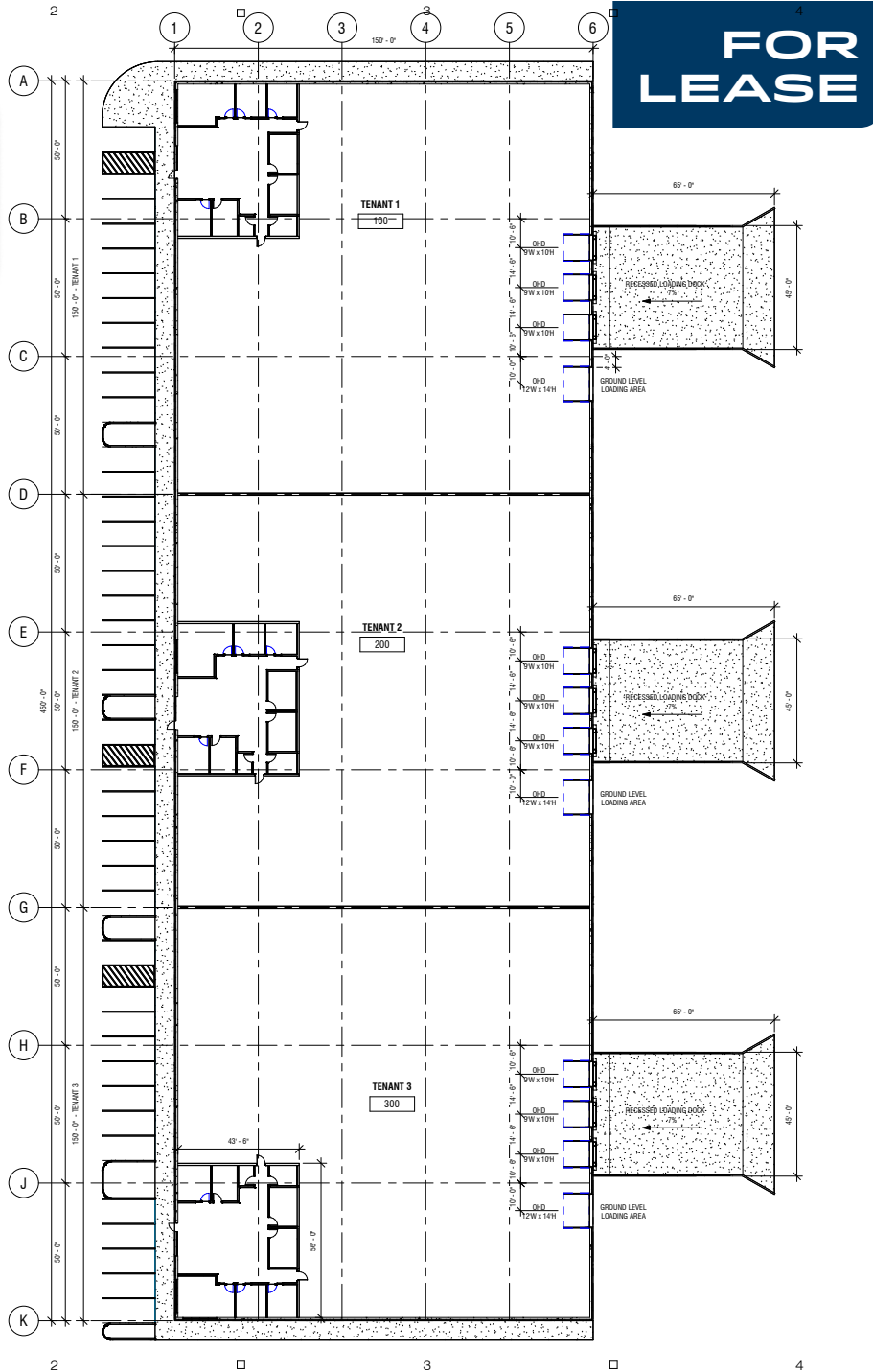
Principal | Licensed in OR
503-517-9871 | dave@capacitycommercial.com

EDMUND SLEVIN

Associate | Licensed in OR
503-502-7795 | edmund@capacitycommercial.com



PROPERTY SUMMARY



PROPERTY DETAILS	
Address	Avenue C @ 7 th Street, White City, OR 97503
Available Space	67,500 SF Divisible to 22,500 SF
N° of Suites Available	3 Suites - 22,500 SF each
Office Space	Build to Suit
Zoning	General Industrial (GI)
Clear Height	26'
Dock High Doors per Space	9 Dock Doors - 3 per Suite
Grade Level Doors per Space	3 Grade Level Doors - 1 per Suite
Sprinklered	ESFR
Storage	Yard Storage Available
Space Condition	Finished Warehouse
Availability	April 2025
Lease Rate	Call Brokers for Pricing Guidance

DAN SLEVIN

Senior Vice President | Licensed in OR
503-260-1833 | dan@capacitycommercial.com

DAVE ELLIS

Principal | Licensed in OR & WA
503-517-9871 | dave@capacitycommercial.com

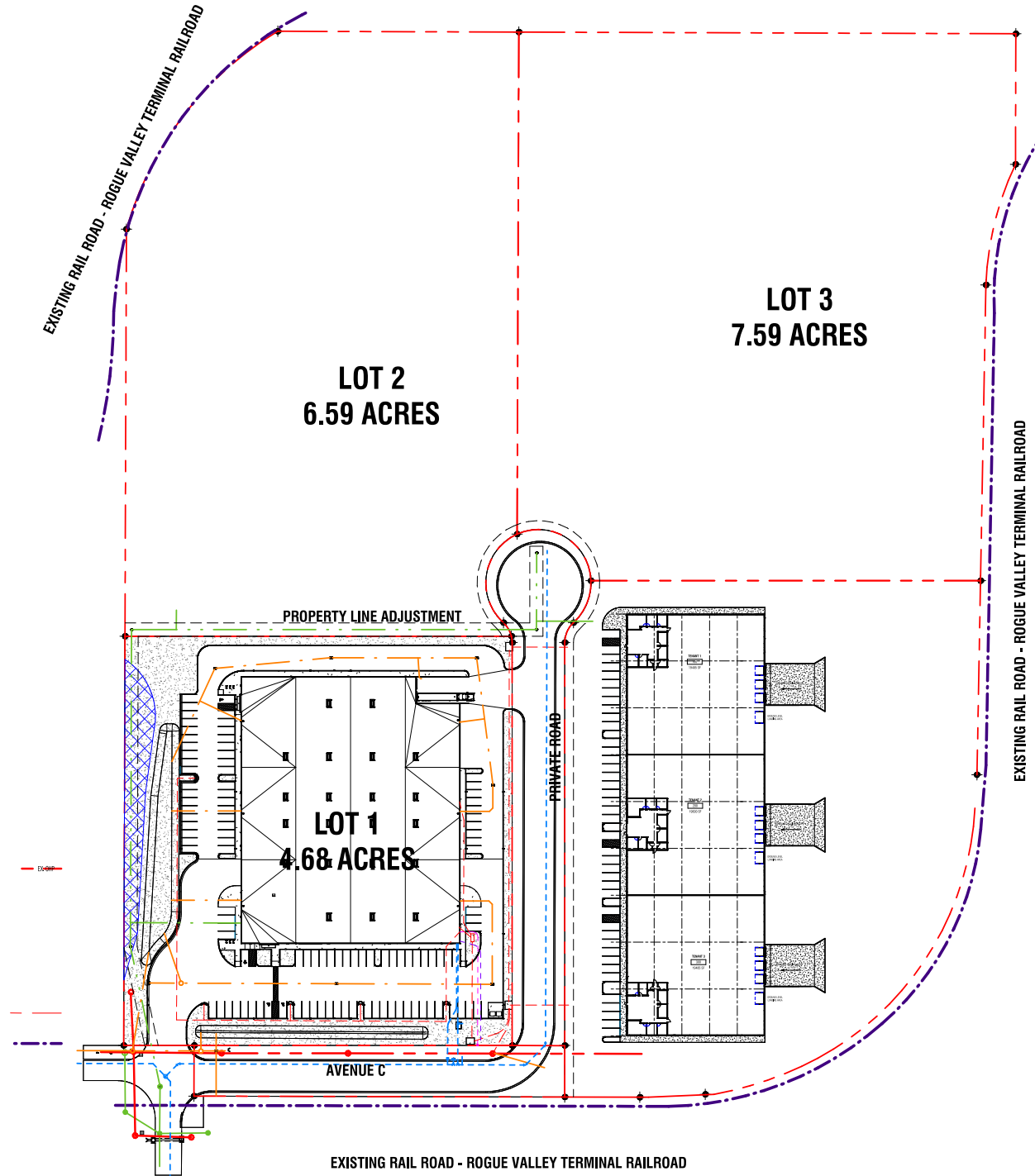
EDMUND SLEVIN

Associate | Licensed in OR
503-502-7795 | edmund@capacitycommercial.com

MEDFORD INDUSTRIAL CENTER

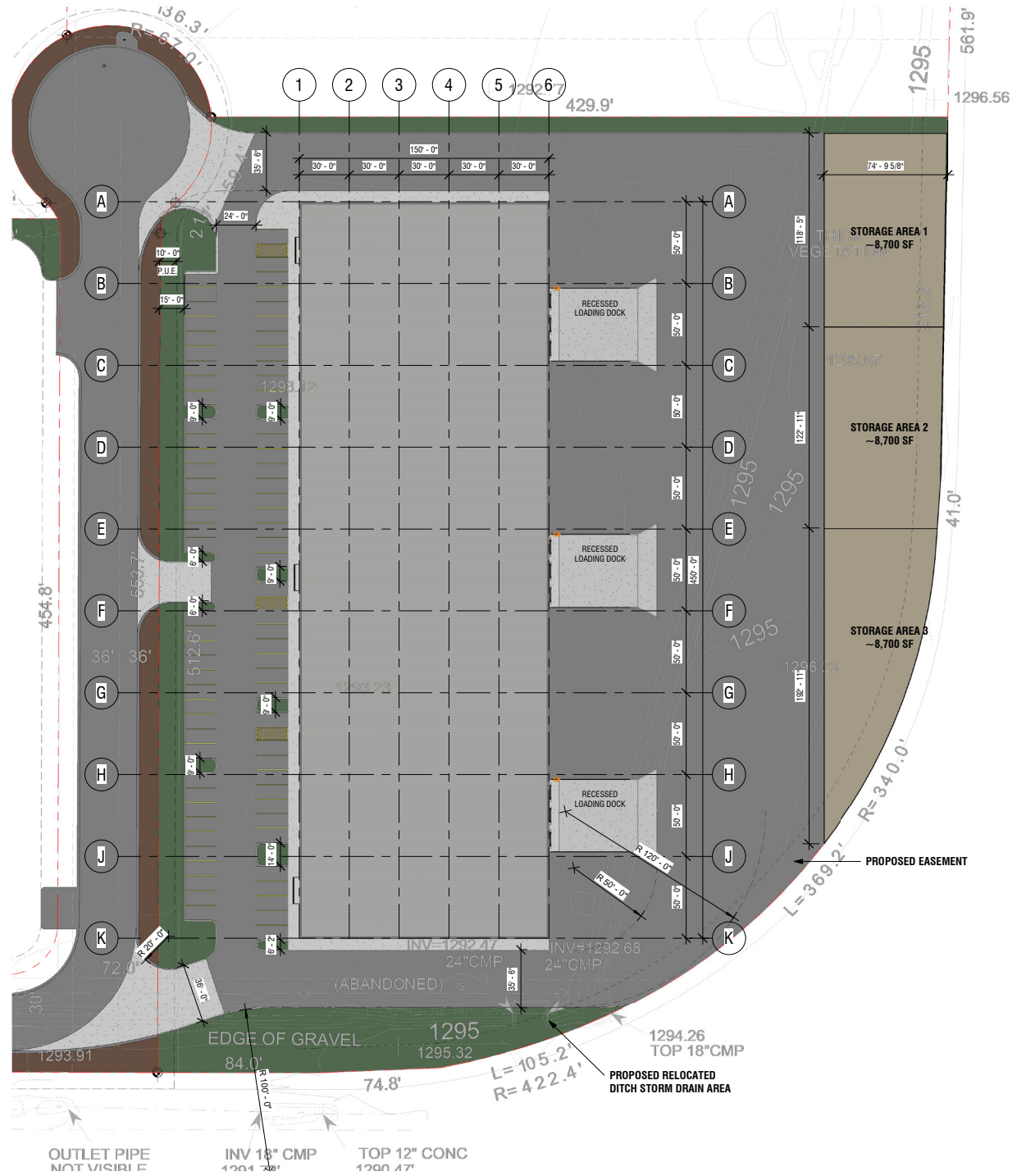


SITE PLAN





SITE PLAN





AERIAL MAP

