

# UNDER CONSTRUCTION



## ±10,000 SF WITH ±3 - 7.2 ACRES OF GRAVEL YARD

2497 Nazareth Road | Wellford, SC 29385

**Sale or  
Lease:  
Call For  
Pricing**

- Office Space: ±1,500 SF
- Warehouse Space: ±8,500 SF
- Three (3) Drive-Through Bays
- Seven (7) Drive-in Doors (18' x 16')
- 24' Clear Height
- Uses: truck service, equipment rental, construction supply, etc. Zoned for industrial outdoor storage



**LEE & ASSOCIATES**  
COMMERCIAL REAL ESTATE SERVICES

**Jordan Skellie, SIOR**  
EVP/Principal  
jskellie@lee-associates.com

**Elledge Willis**  
Associate  
ewillis@lee-associates.com

**864.704.1040**  
LeeGreenville.com



**LOCATION**  
BMW: ±8 MILES, INLAND  
PORT GREER: ±9 MILES,  
GSP AIRPORT: ±11 MILES



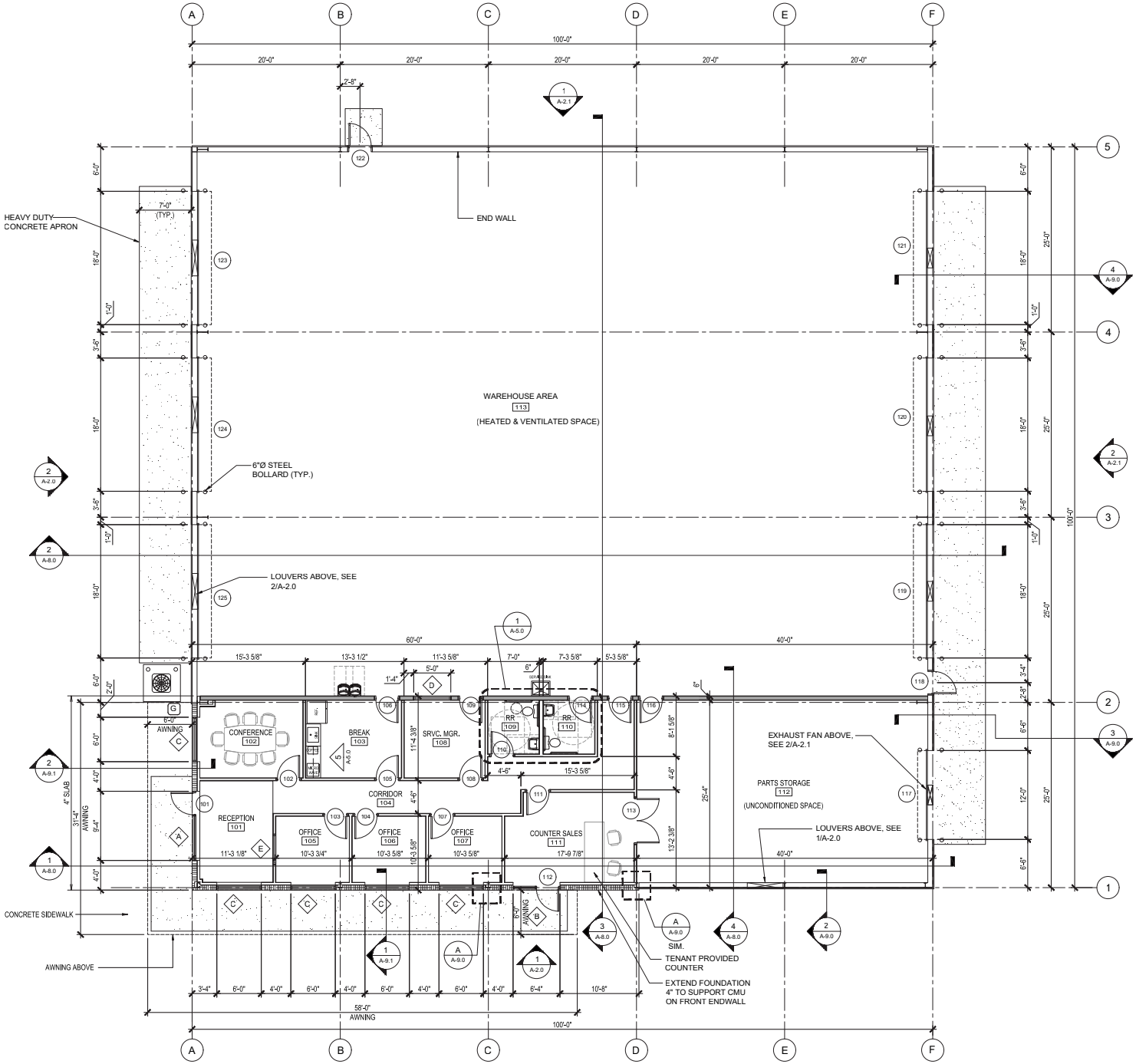
**INTERSTATE  
ACCESS**  
MULTIPLE ACCESS  
POINTS TO I-85



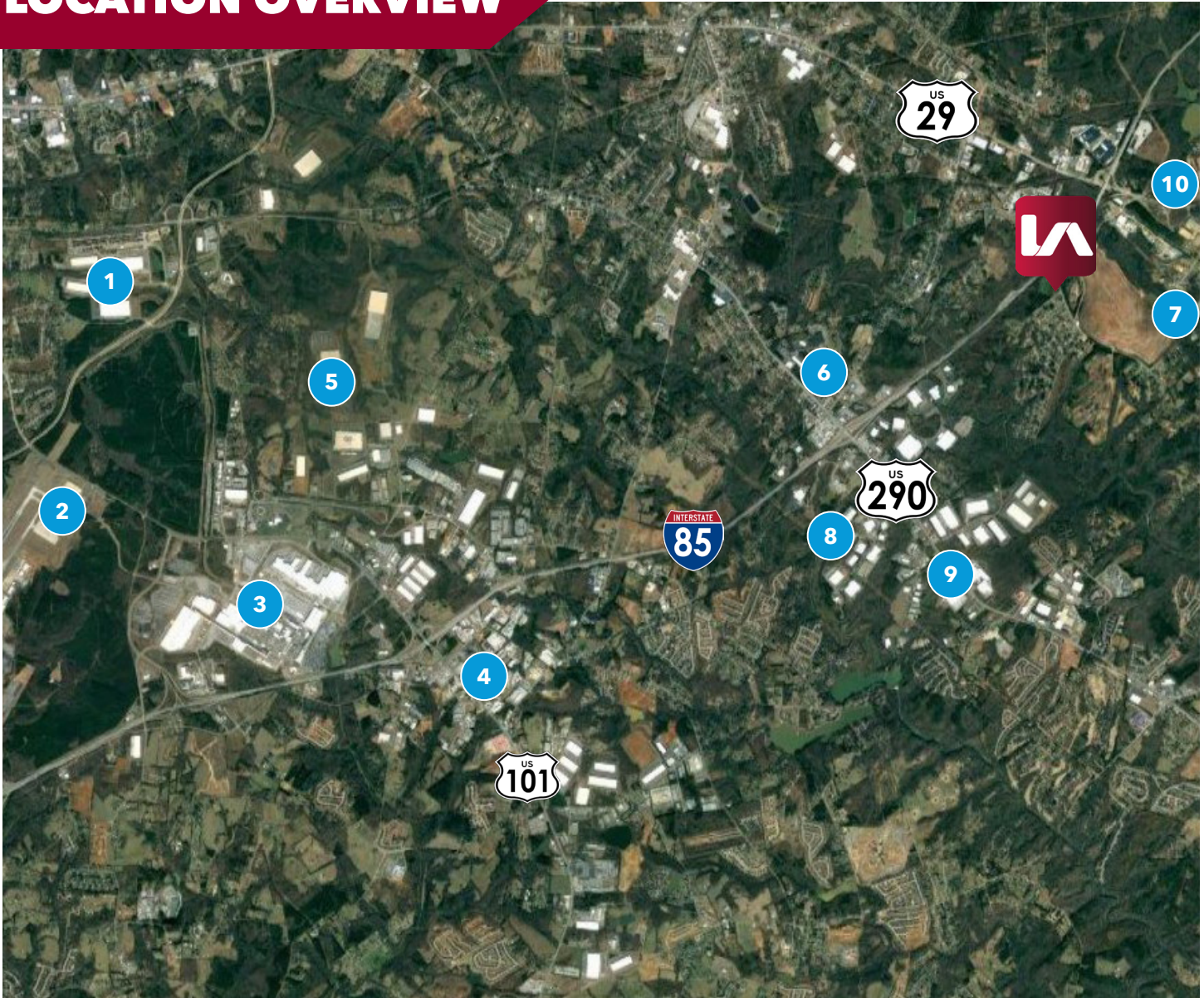
**UNDER CONSTRUCTION**  
DELIVERING Q3 2024



# FLOOR PLAN



# LOCATION OVERVIEW



- |                             |                  |
|-----------------------------|------------------|
| 1 Inland Port Greer         | 6 Wabtec         |
| 2 GSP International Airport | 7 Copart         |
| 3 BMW Manufacturing         | 8 AFL            |
| 4 Old Dominion Freight Line | 9 Eaton          |
| 5 Lowes Distribution Center | 10 XPO Logistics |



# ACCESS TO I-85





**LEE & ASSOCIATES**  
COMMERCIAL REAL ESTATE SERVICES

**864.704.1040**  
**LeeGreenville.com**

**GREENVILLE OFFICE**  
201 W. McBee Ave, Suite 400  
Greenville, SC 29601

**SPARTANBURG OFFICE**  
320 E. Main Street, Suite 430  
Spartanburg, SC 29302

All information furnished regarding the properties and information in this packet is from sources deemed reliable, but no warranty or representation is made to the accuracy thereof and same is submitted to errors, omissions, change of price, rental or other conditions prior to sale, lease or financing or withdrawal without notice. No liability of any kind is to be imposed on the broker herein.

**LEARN MORE**  
**GIVE US A CALL**



**Jordan Skellie, SIOR**  
EVP/Principal  
864.238.2188  
jskellie@lee-associates.com



**Elledge Willis**  
Associate  
864.230.8377  
ewillis@lee-associates.com