



THE GOTHAM – 2000 NORTH 2ND ST.

± 1,000–3000 SF OFFICE SUITES AVAILABLE FOR LEASE

BLUEPRINT
COMMERCIAL



Prime River-Wards location in Olde/West Kensington, within The Gotham mixed-use campus

100+ residential units on site and 6,000+ SF of newly constructed commercial space

Building is the site of the former Gotham Silk Factory (1917–1935)

Multiple commercial layouts available supporting diverse operational needs

Available spaces (Gotham Tower & Gotham North):

- Unit 100: 2,020 SF
- Unit 206: 3,000 SF
- Units 202–24: 1,032 SF
- Unit 101: 939 SF

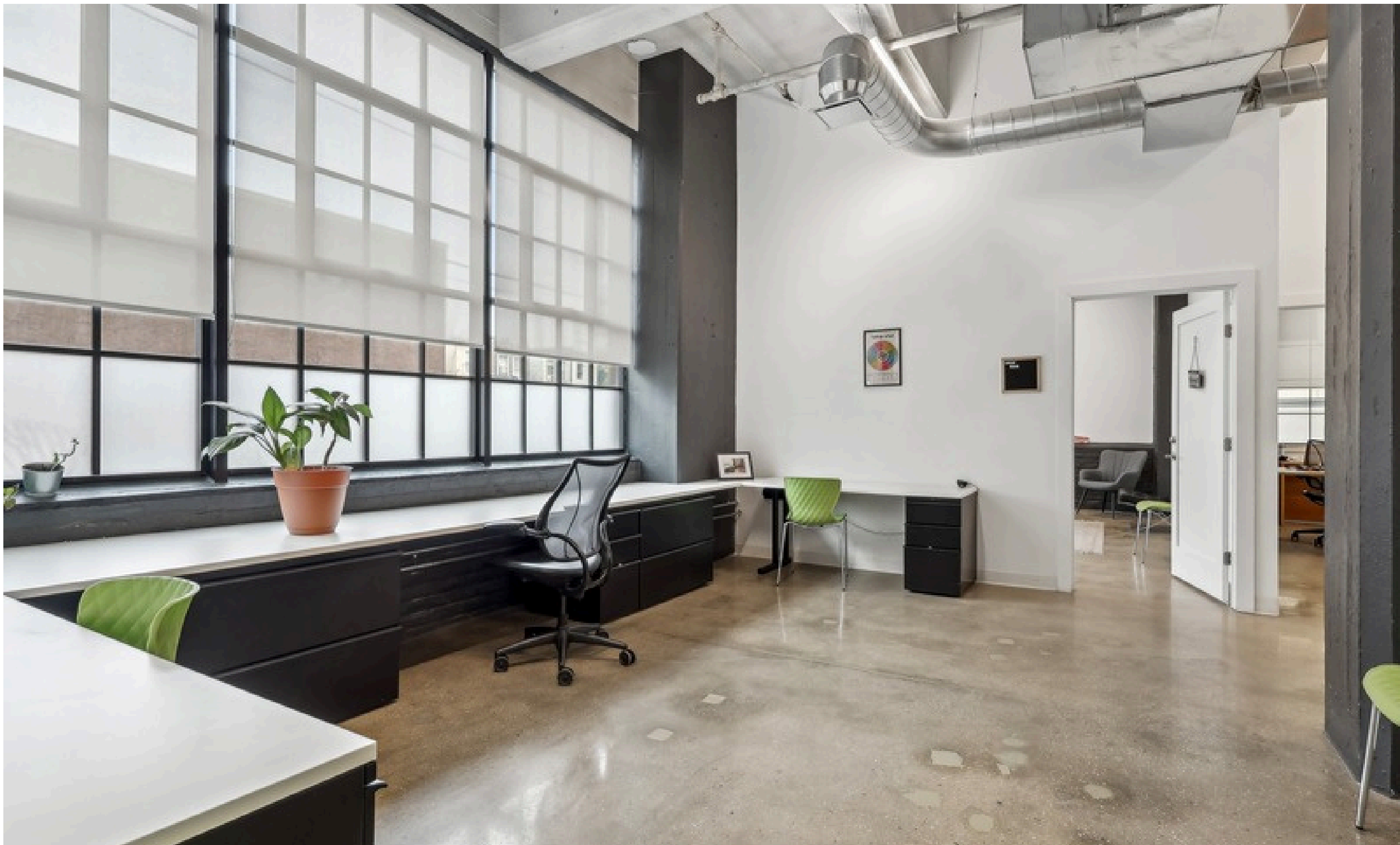
Neighborhood Overview

West Kensington is emerging as one of Philadelphia's most dynamic corridors for business growth and creative enterprise. Once defined by its industrial heritage, the neighborhood is now transforming into a hub for makers, innovators, and modern retailers drawn to its authentic architecture, walkable streets, and access to major transit lines. A growing mix of cafés, galleries, and small businesses has infused the area with a creative energy that reflects Philadelphia's evolving urban identity. The result is a district with genuine character, where legacy and reinvention meet and where new commercial tenants can establish themselves in an environment that's both connected and evolving.

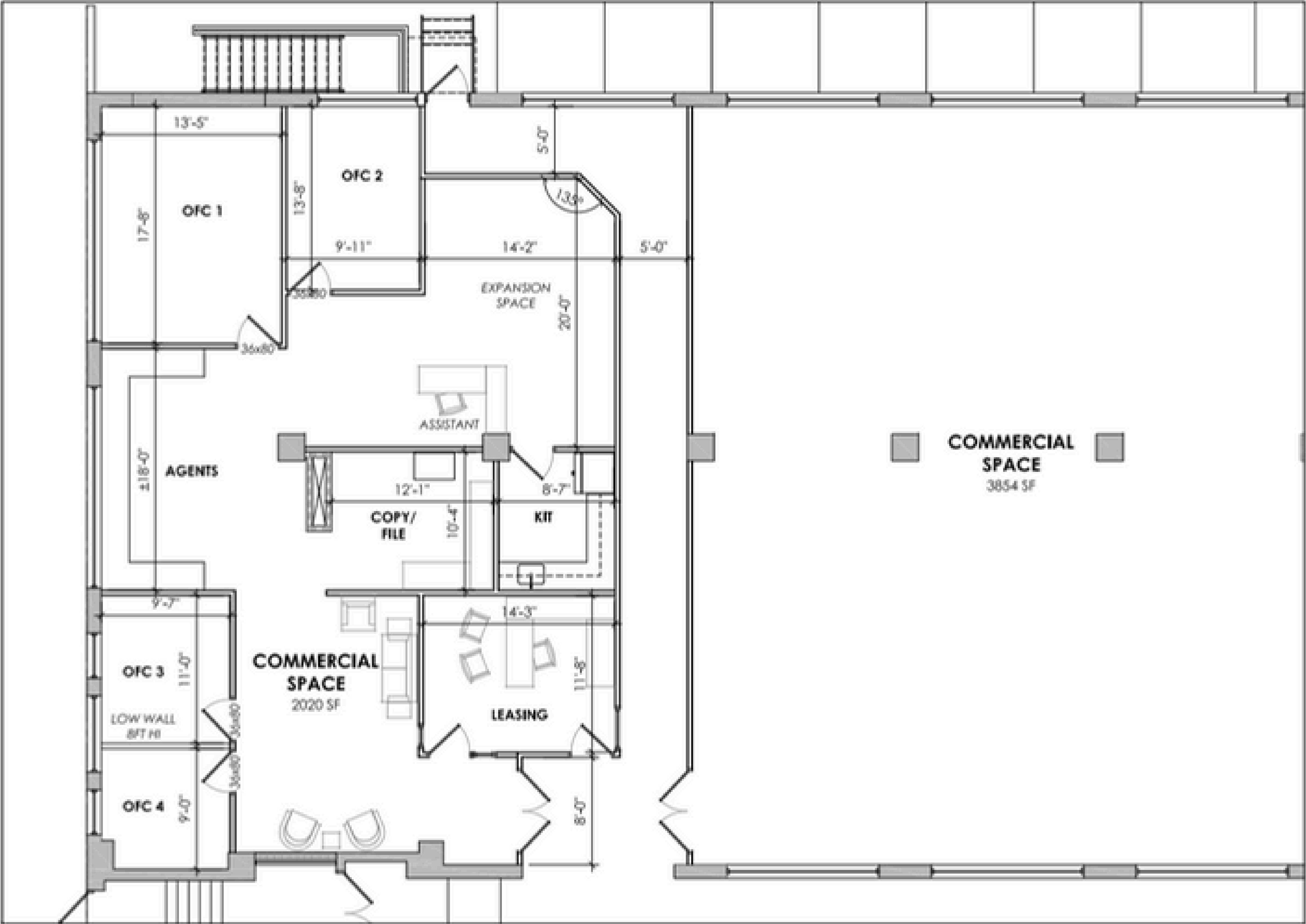
Located at 2000 North 2nd Street, The Gotham sits at the heart of this energy. Its setting captures the momentum of the River Wards, offering an excellent location with accessibility and value for businesses ready to grow alongside the neighborhood.



Unit 100 (+/- 2,020 SF)



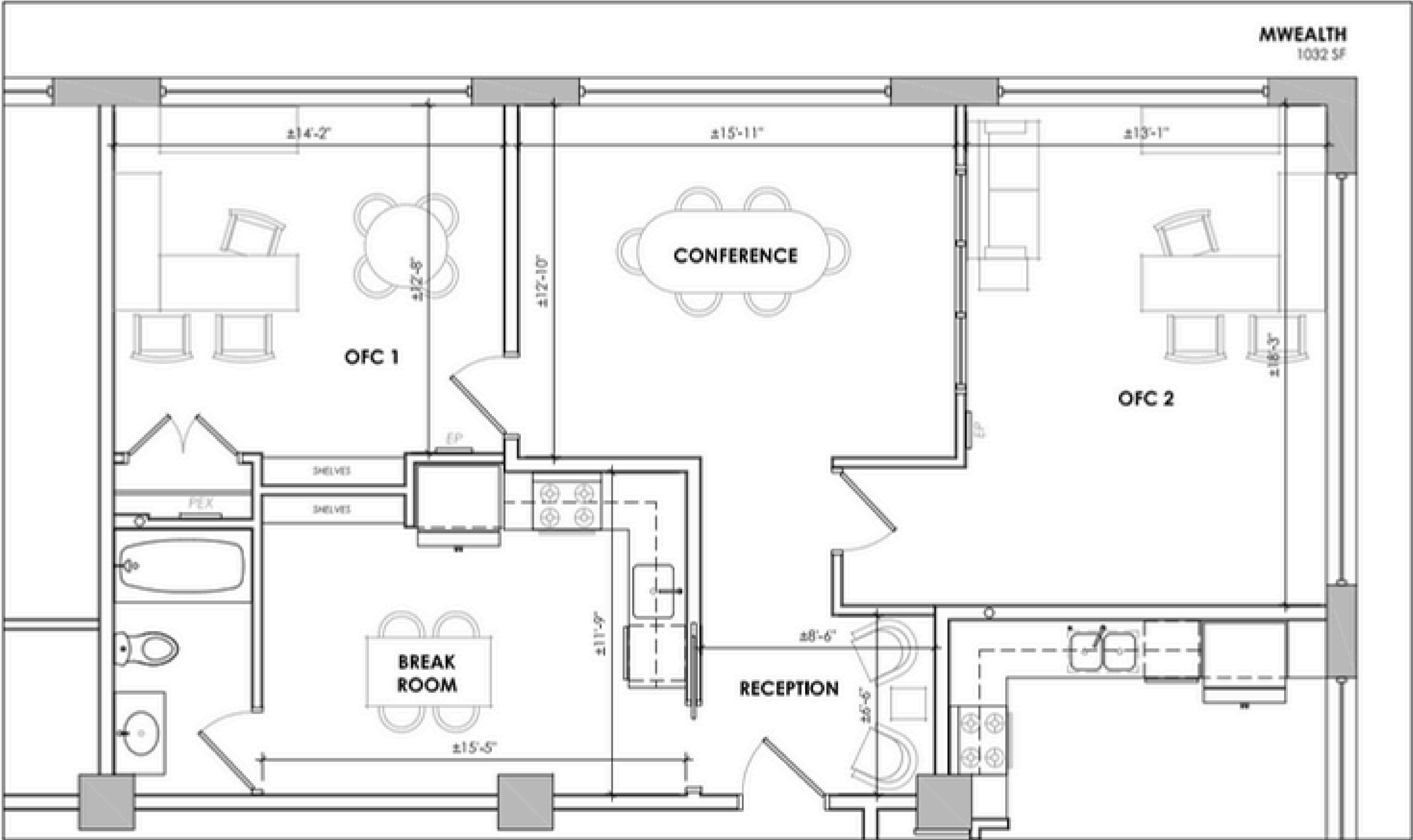
Unit 100 Floor Plan



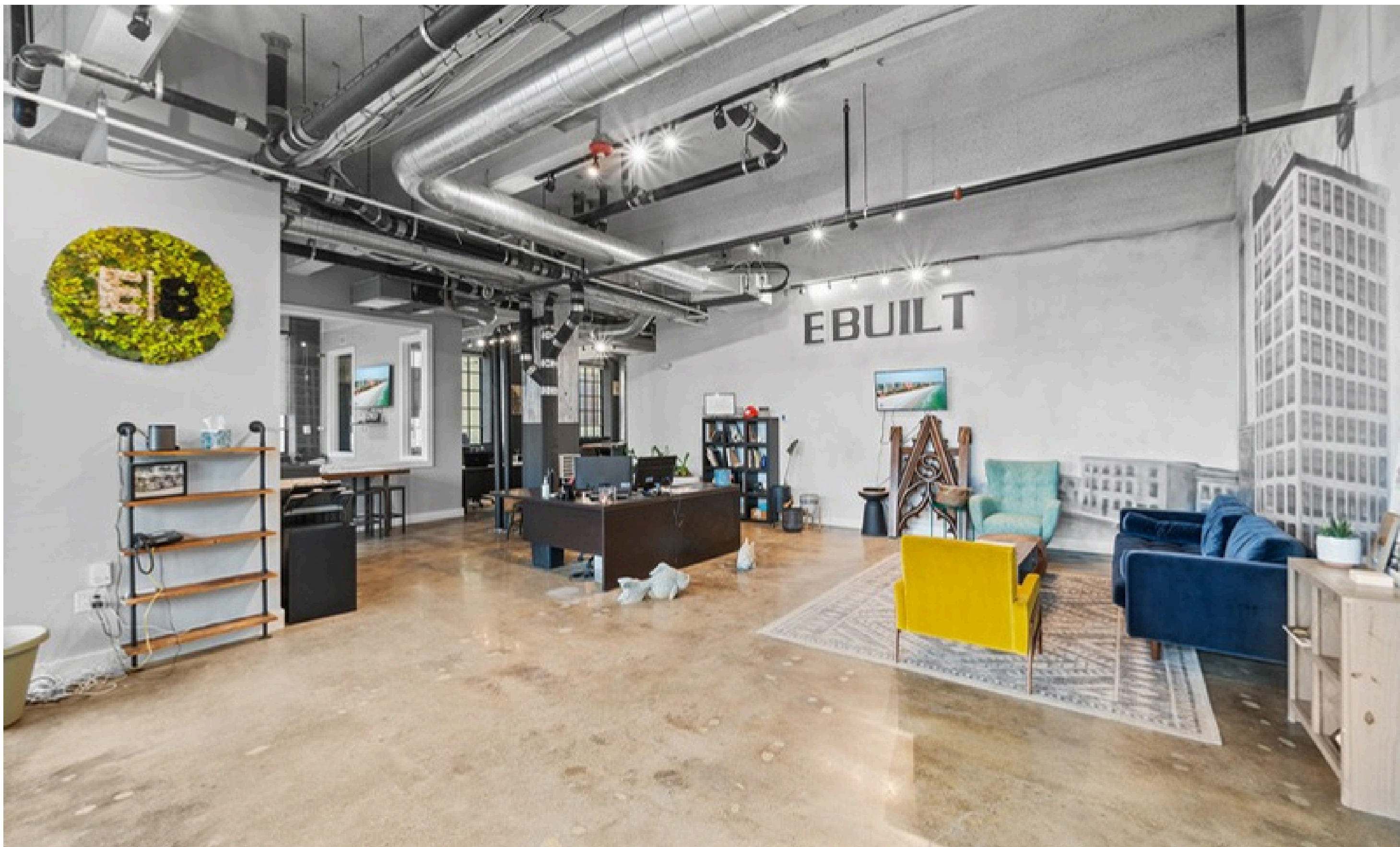
Unit 202-204 (+/- 1,032 SF)



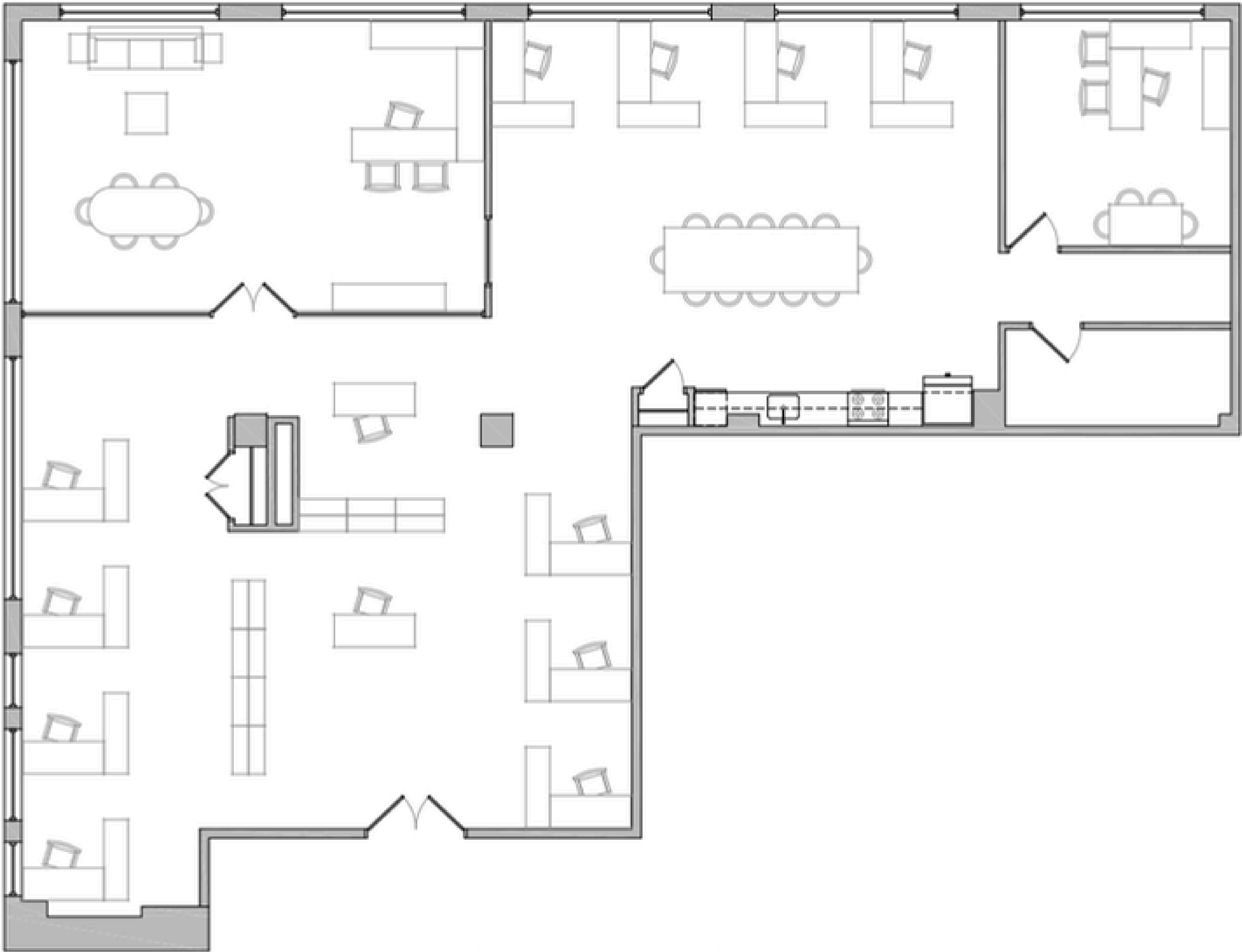
Unit 202-204 Floor Plan



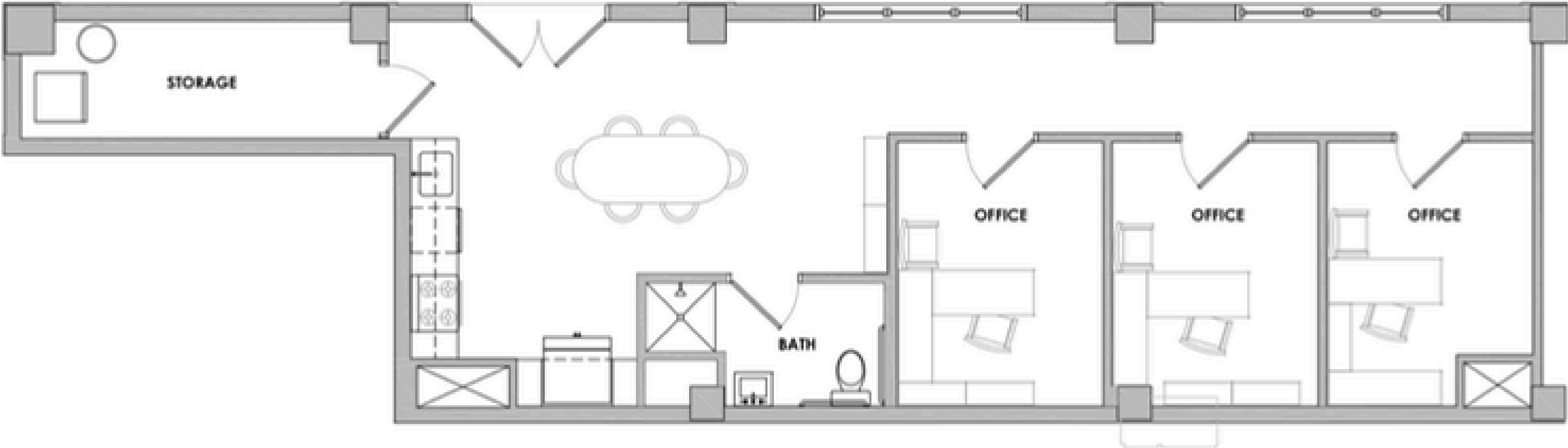
Unit 206 (+/- 3,000 SF)



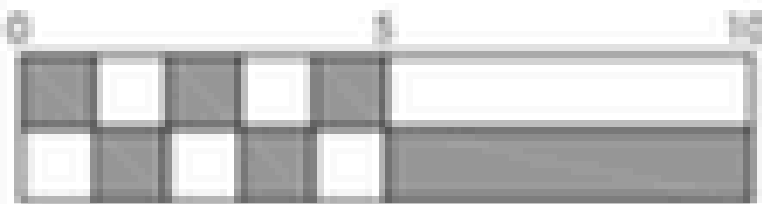
Unit 206 Floor Plan



Unit 101 Floor Plan (939 SF)



UNIT 101
COMMERCIAL STUDIO
939 SF



THE GOTHAM - 2000 NORTH 2ND STREET

Locator Map





THE GOTHAM

2000 NORTH 2ND STREET
PHILADELPHIA, PA 19122

GERRY SMITH

PRINCIPAL

M: 610-509-3690

gerry@blueprintcommercial.com

MADDIE WHITEHEAD

MANAGING PRINCIPAL

M: 610-742-4863

maddie@blueprintcommercial.com

BLUEPRINT
COMMERCIAL