

CBRE

PLC PENINSULA
land & capital

1850
GATEWAY



For more information, please visit: www.peninsulaland.com

1850 GATEWAY DRIVE | SAN MATEO, CA 94404

TRANSIT

1850 Gateway sits right between San Francisco, San Jose and Silicon Valley in the 92/101 Corridor. The Mariner's Island Caltrain Shuttle stops just one block from the property and runs directly to Hillsdale Station.

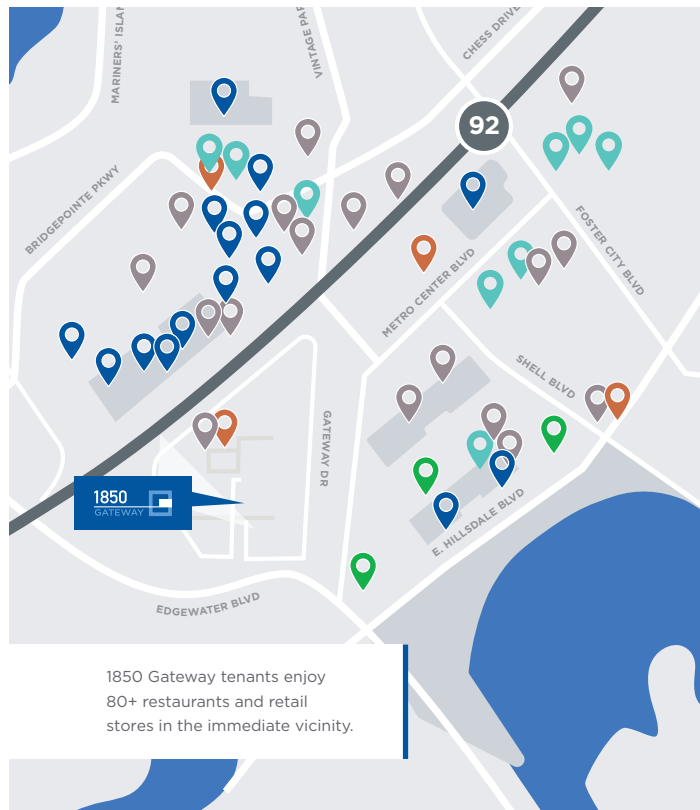
MAJOR THOROUGHFARES
1 minute to Highways 92/101

PUBLIC TRANSIT
6 minutes to Hayward Park Station
8 minutes to Hillsdale Station
10 minutes to Downtown San Mateo Station

NEARBY REGIONS
20 minutes to Palo Alto
30 minutes to San Francisco
40 minutes to San Jose

AIRPORTS
13 minutes to SFO Airport
30 minutes to Oakland International Airport
30 minutes to San Jose International Airport

LOCAL AMENITIES

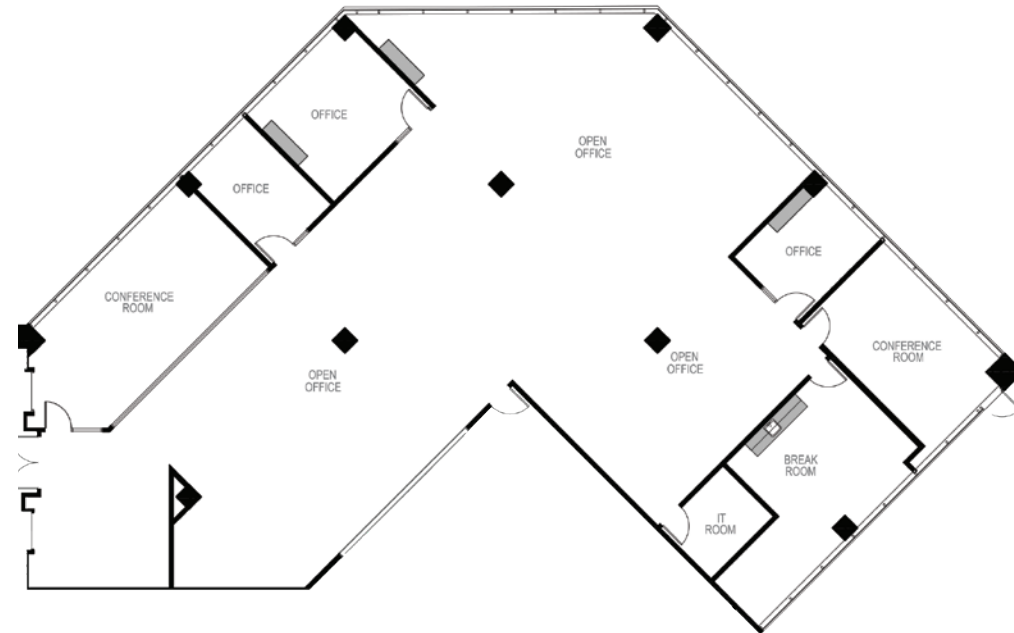


SUITE 125 | ±6,393 RSF



SUITE 125

- 3 Private Office
- 2 Conference Room
- 1 Break Room
- 1 IT Room
- 1 Open Office



<p>JOHN HELD +1 650 577 2964 john.held@cbre.com Lic. 01202476</p>	<p>ALEX WILSON +1 650 577 2923 alex.wilson@cbre.com Lic. 01771333</p>	<p>EVAN CHANG +1 650 577 2962 evan.chang@cbre.com Lic. 02010044</p>	<p>ROGER FIELDS +1 650 207 1610 rfields@peninsulaland.com</p>
--	--	--	--



© 2019 CBRE, Inc. All rights reserved. This information has been obtained from sources believed reliable, but has not been verified for accuracy or completeness. Any projections, opinions, or estimates are subject to uncertainty. The information may not represent the current or future performance of the property. You and your advisors should conduct a careful, independent investigation of the property and verify all information. Any reliance on this information is solely at your own risk. CBRE and the CBRE logo are service marks of CBRE, Inc. and/or its affiliated or related companies in the United States and other countries. All other marks displayed on this document are the property of their respective owners. Photos herein are the property of their respective owners and use of these images without the express written consent of the owner is prohibited. PMSudio _ January 2019