

3106 & 3108

Ponte Morino

CAMERON PARK | CALIFORNIA

±600 SF UP TO ±3,087 SF AVAILABLE



NEWMARK

Tom Conwell

Managing Director
t 916-569-2380

tom.conwell@nrmk.com
CA RE License #01394155

Susan Nelson

Healthcare Property Specialist
t 916-367-6352

susan.nelson@nrmk.com
CA RE License #01413052



LEASE HIGHLIGHTS

- :: Fully improved Office/Medical space
- :: Easy access to Highway 50
- :: Attractive common lobby with above standard finishes
- :: Professional Business/Medical Park environment
- :: Nearby retail amenities
- :: Close proximity to Marshall Medical Center & Ponte Palmero Retirement Community
- :: ± 600 SF up to $\pm 3,087$ SF AVAILABLE

3106 Ponte Mornio:

Suite B $\pm 3,087$ SF

3108 Ponte Morino

Suite 111 $\pm 1,001$ SF

Suite 130 $\pm 1,237$ SF

Suite 213* ± 600 SF

**Elevator serviced to second floor*



To Downtown Sacramento



Boat & RV Storage

BIG TIRES

ACE Hardware

Dutch Bros

Carls Jr

K

76

Shell

Genny's

JIMBOY'S

Bank of America

QUALITY

Chevron

SAFeway

McDonald's

QUALITY

Starbucks

Davita

Marshall Medical Center

Palmer Dr

BEL AIR
SUBWAY
Jilly's
WELLS FARGO
Mobil
KFC
CVS
Auto Zone
Walmart

Cameron Park Dr.

UMPOUA PARK

Walgreens

Eskaton Lodge

Palmer Professional Centre

Cameron Park Village Apartments

Ponte Palero Retirement Community

Ponte Morino Dr

3106

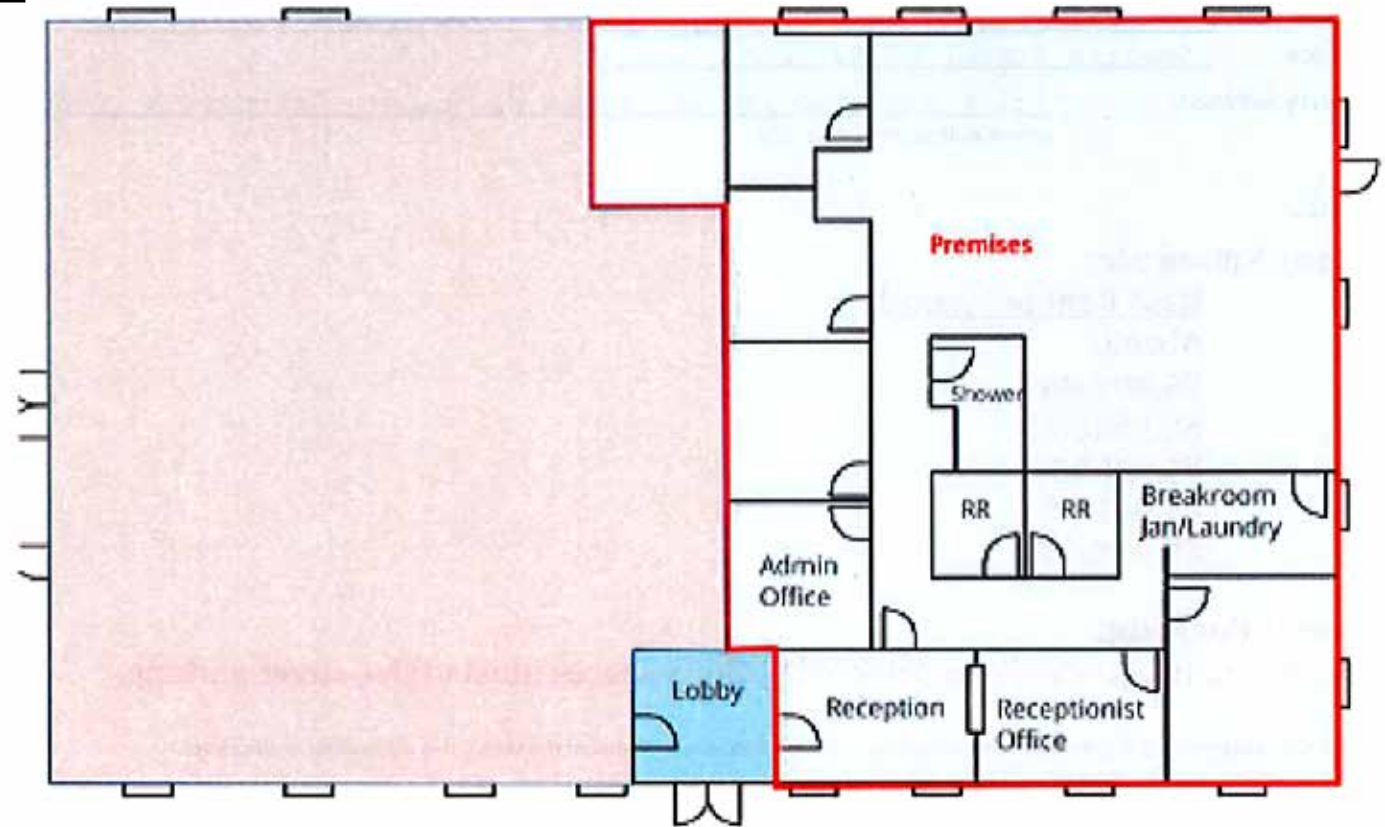
3108

LOCATION

Suite B

3106 Ponte Morino

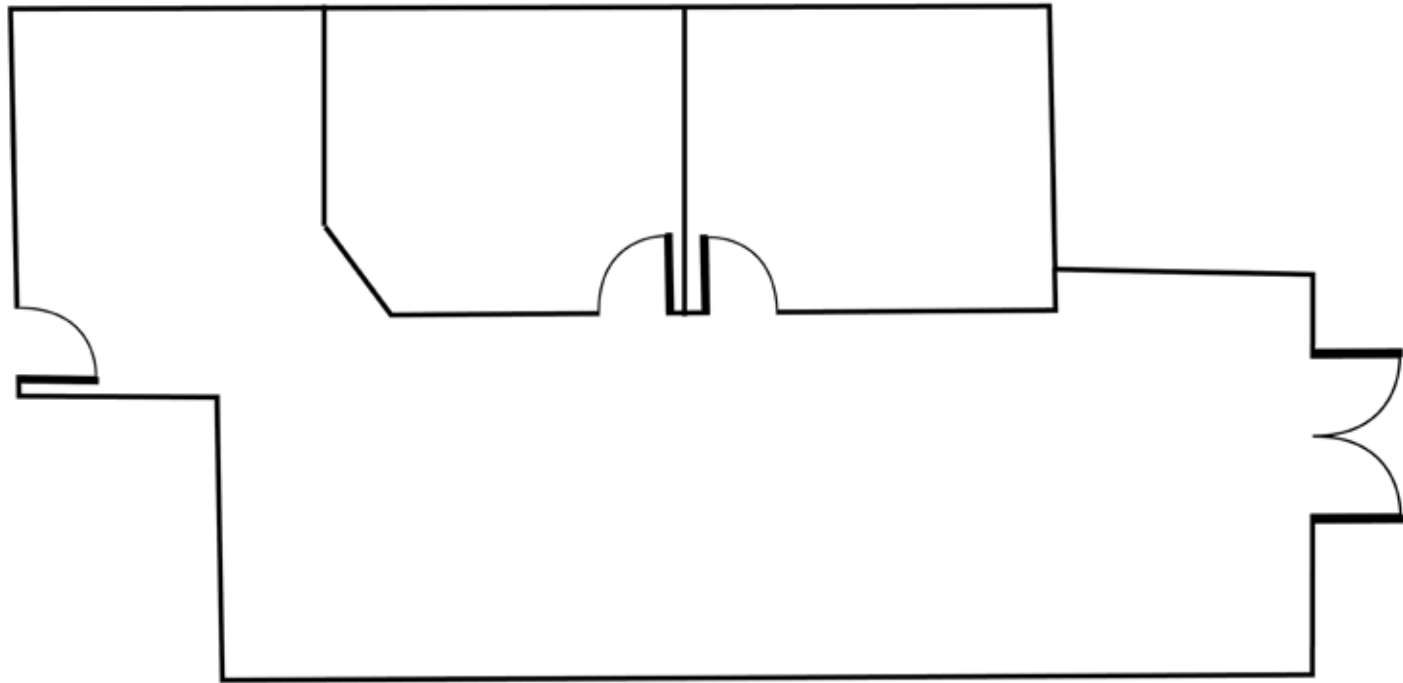
±3,087 SF



Suite 111

3108 Ponte Morino

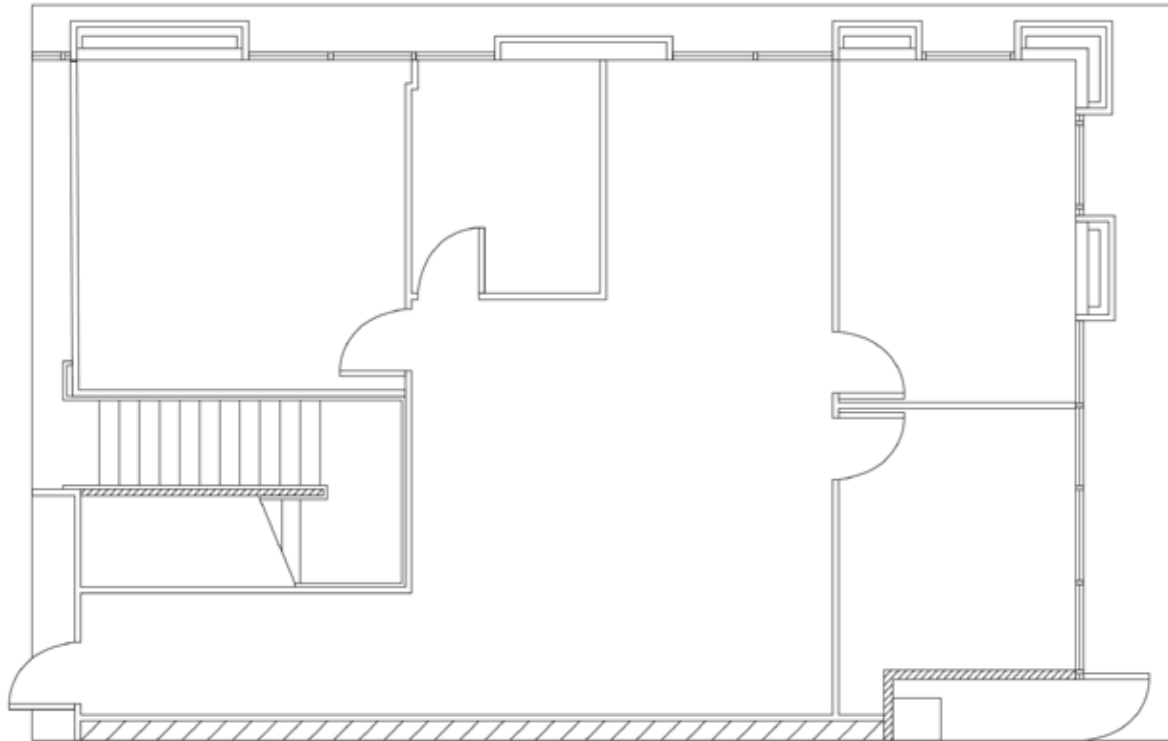
±1,001 SF



Suite 130

3108 Ponte Morino

±1,237 SF



3106 & 3108

Ponte Morino

CAMERON PARK | CALIFORNIA

±600 SF UP TO ±3,087 SF AVAILABLE

Tom Conwell

Managing Director

916.569.2380

tom.conwell@nmrk.com

CA RE License #01394155

Susan Nelson

Healthcare Property Specialist

916.367.6352

susan.nelson@nmrk.com

CA RE License #01413052

NEWMARK

The distributor of this communication is performing acts for which a real estate license is required. The information contained herein has been obtained from sources deemed reliable but has not been verified and no guarantee, warranty or representation, either express or implied, is made with respect to such information. Terms of sale or lease and availability are subject to change or withdrawal without notice. All images used are for illustrative purposes only and are intended to convey the concept and vision for the development/apartments/houses. They are for guidance only, may alter as work progresses and do not necessarily represent a true and accurate depiction of the finished product. Floor plans are intended to give a general indication of the proposed layout only. All images and dimensions are not intended to form part any contract or warranty.

19-0744 • 10/24 NMRK-NWMKTG2024