



# For lease

Half office/Half warehouse available

## 9221 Rumsey Road, Columbia, MD 21045

- 3,900 SF
- 7,800,SF
- Dock Loading
- \$12.75 NNN
- Newly renovated



\*Air Conditioned Warehouse

\*Metal Mezzanine with Sprinklers available as extra free storage



**Rob Freedman**

Managing Director

[rob.freedman@jll.com](mailto:rob.freedman@jll.com)

+1 (410) 952 9444

**Dominic Digiovannantonio**

Vice President

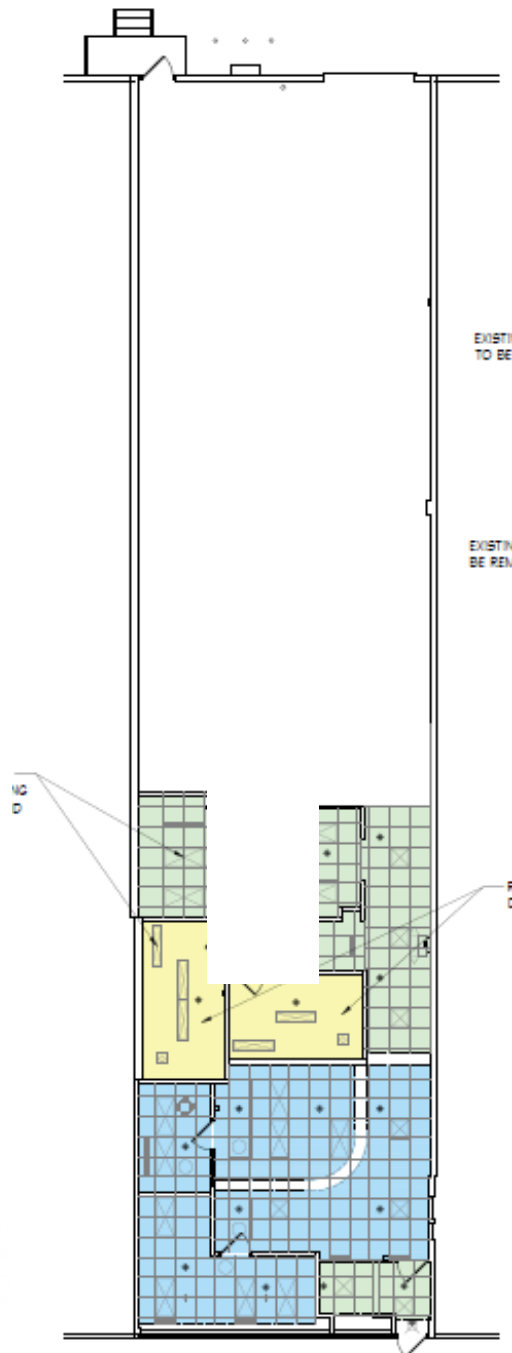
[dom.digi@jll.com](mailto:dom.digi@jll.com)

+1 443 452 1505

[jll.com](http://jll.com)

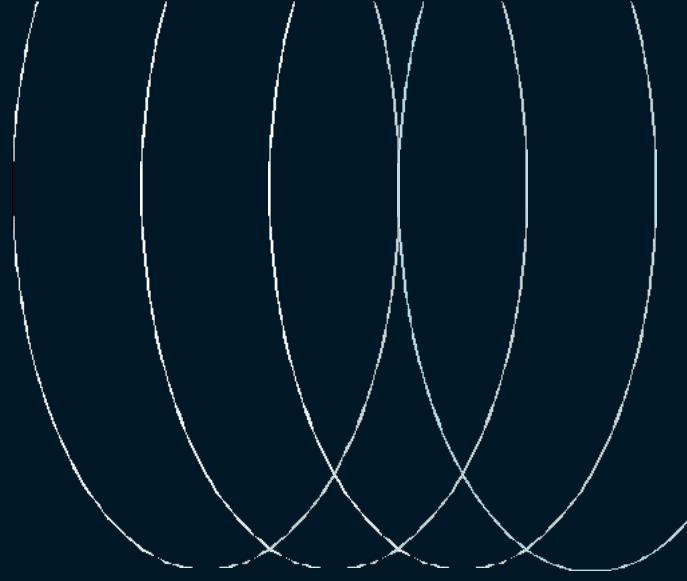
# Floor Plan

- 3,900 SF
- Newly renovated & painted
- 30% office
- 70% warehouse
- Dock Loading

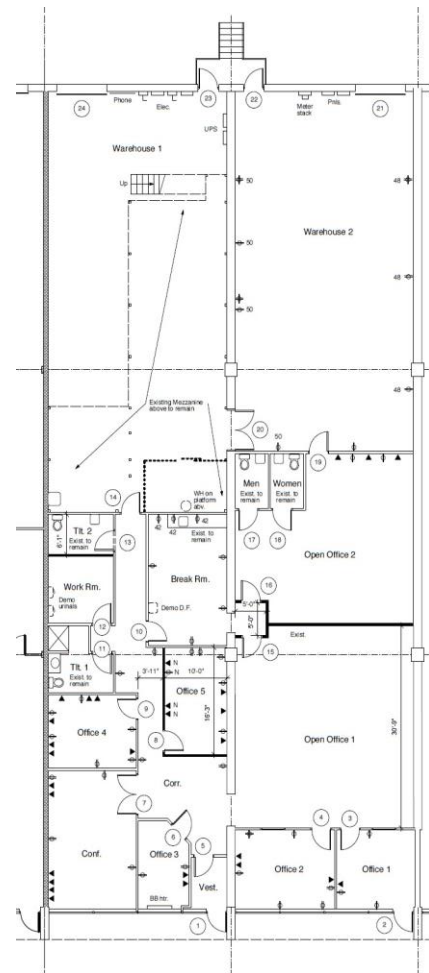




# Floor Plan



- 7,800 SF
- Newly renovated, painted, new LED lighting
- 50% office
- 50% warehouse
- Mezzanine (metal, legal, sprinklered)
- Dock loading
- Air-Conditioned Warehouse



**Rob Freedman**  
Managing Director  
[rob.freedman@jll.com](mailto:rob.freedman@jll.com)  
+1 (410) 952 9444

**Dominic Digiovannantonio**  
Vice President  
[dom.digi@jll.com](mailto:dom.digi@jll.com)  
+1 443 452 1505

Although information has been obtained from sources deemed reliable, neither [Client] nor JLL makes any guarantees, warranties or representations, express or implied, as to the completeness or accuracy as to the information contained herein. Any projections, opinions, assumptions or estimates used are for example only. There may be differences between projected and actual results, and those differences may be material. Neither [Client] nor JLL accepts any liability for any loss or damage suffered by any party resulting from reliance on this information. If the recipient of this information has signed a confidentiality agreement regarding this matter, this information is subject to the terms of that agreement. ©2023. Jones Lang LaSalle IP, Inc. All rights reserved.