

FIRST CLASS TRUCK YARD FOR LEASE 1425 INDUSTRIAL DRIVE | STOCKTON | CA

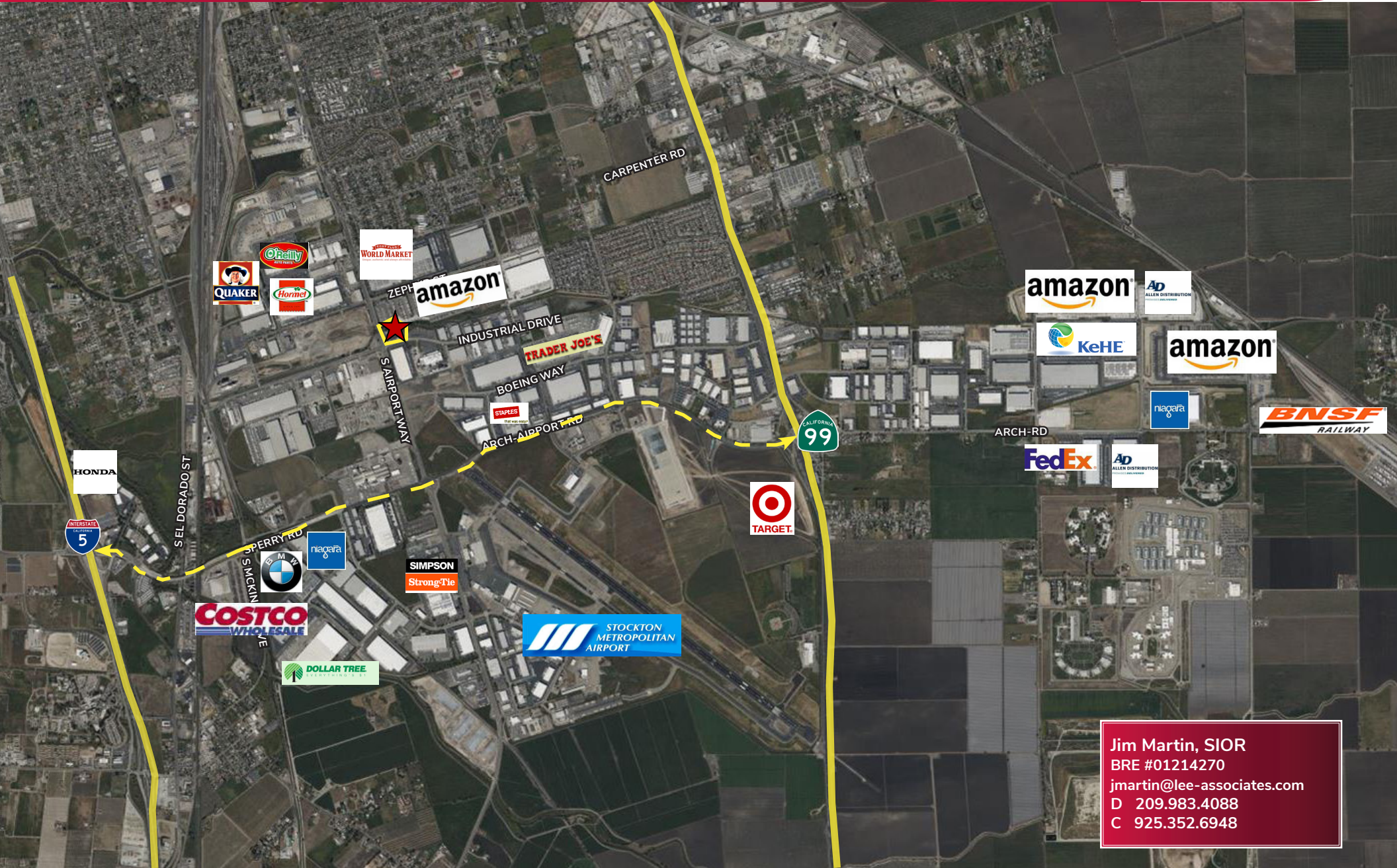


- APN: 177-320-02
- Parcel Size: 3.84± Acres
- Zoning: I-G, General Industrial (City of Stockton)
- Located Near the Stockton Airport / Amazon Prime Terminal
- Secured/Fenced Area with rolling gate and guard shack hookups
- Yard lighting
- Concrete Dolly Pads
- Originally designed to accommodate 94 trailer positions

PRICING: CONTACT AGENT FOR PRICING

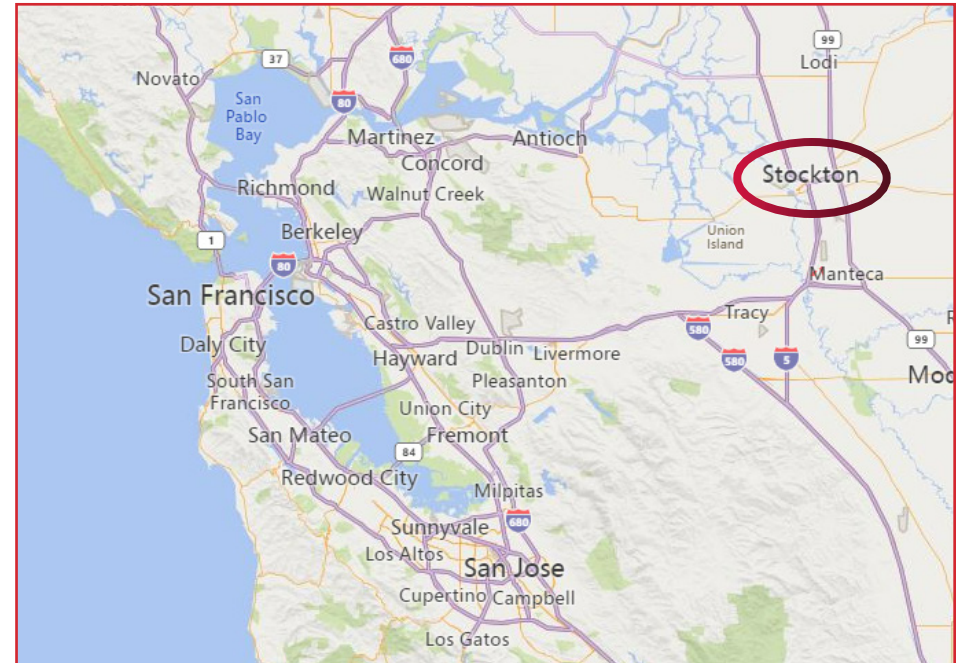
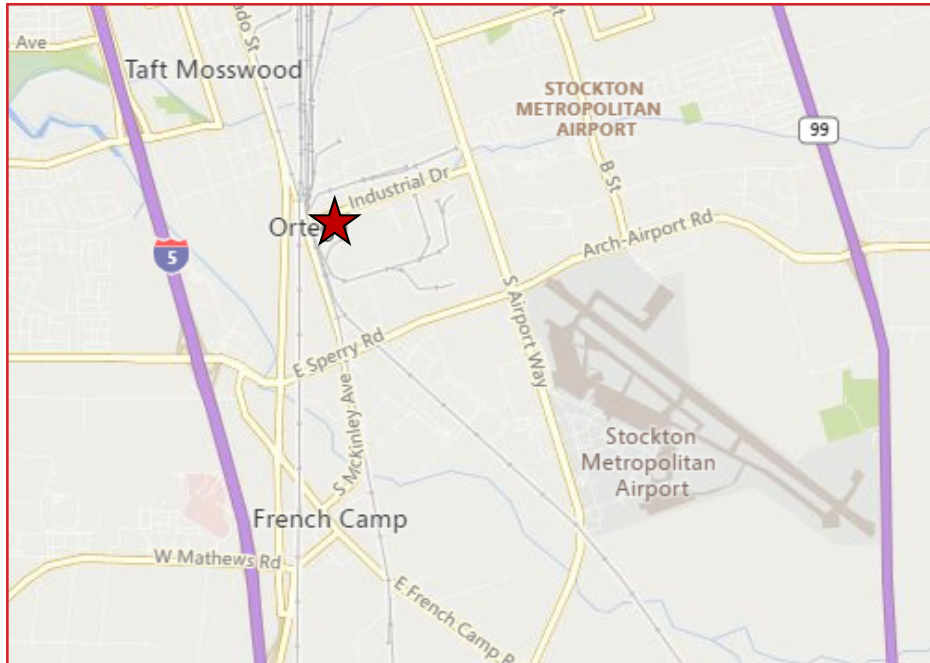
Jim Martin, SIOR
BRE #01214270
jmartin@lee-associates.com
D 209.983.4088
C 925.352.6948

FIRST CLASS TRUCK YARD FOR LEASE 1425 INDUSTRIAL DRIVE | STOCKTON | CA



Jim Martin, SIOR
BRE #01214270
jmartin@lee-associates.com
D 209.983.4088
C 925.352.6948

FIRST CLASS TRUCK YARD FOR LEASE 1425 INDUSTRIAL DRIVE | STOCKTON | CA



Mileage to Freeways:

- Highway 4: 3.7 miles
- Interstate 5: 3.3 miles
- Highway 99: 2.2 miles
- Highway 120: 10.2 miles

Mileage to Intermodal Yards:

- BNSF (Stockton): 5.3± miles
- UPRR (Manteca): 3.4± miles

Mileage to Ports:

- Stockton: 6.4± miles via I5 N
- Oakland: 69.1± miles via I-205W

All information furnished regarding property for sale, rental or financing is from sources deemed reliable, but no warranty or representation is made to the accuracy thereof and same is submitted to errors, omissions, change of price, rental or other conditions prior to sale, lease or financing or withdrawal without notice. No liability of any kind is to be imposed on the broker herein.

FIRST CLASS TRUCK YARD
FOR LEASE
1425 INDUSTRIAL DRIVE | STOCKTON | CA



Jim Martin, SIOR
BRE #01214270
jmartin@lee-associates.com
D 209.983.4088
C 925.352.6948