
3200SF PROFESSIONAL OFFICE SPACE AVAILABLE

3230 Peoples Dr, Harrisonburg, VA 22801

Executive Summary



OFFERING SUMMARY

Lease Rate: \$12.00 SF/yr NNN
+ CAM Fees

Available SF: 3,200 Square Feet

Utilities: Public Water
Public Sewer

Zoning: B2

Available: October 15, 2025

MLS#: 668276



PROPERTY OVERVIEW

Here is your next growth location! This is 3200 sf of well-designed and easily accessible office space in the business sector of a growing south Harrisonburg, VA. It is located right off South Main Street, (Rt. 11) and just across from Exit 243 of I-81, making this location easily accessible from anywhere in Harrisonburg or even Rockingham County.

For More Information:

Tom Oberholtzer

540.810.6242

tom.oberholtzer@cottonwood.com

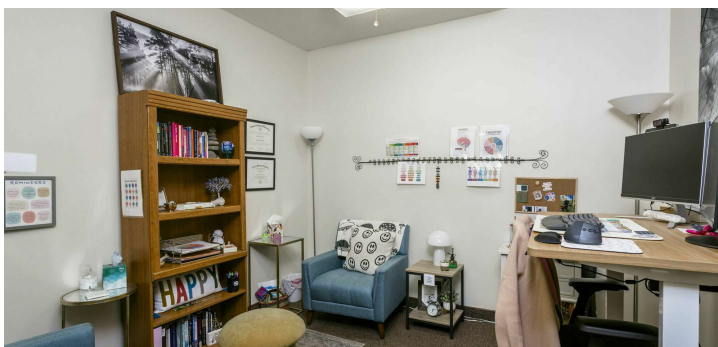
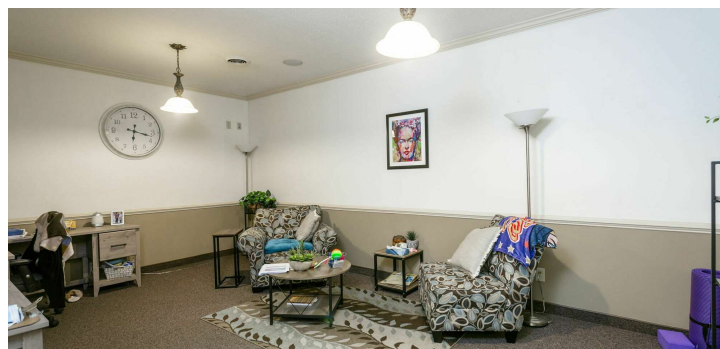
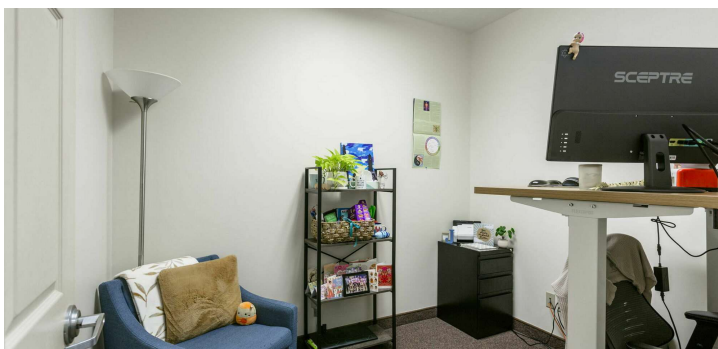
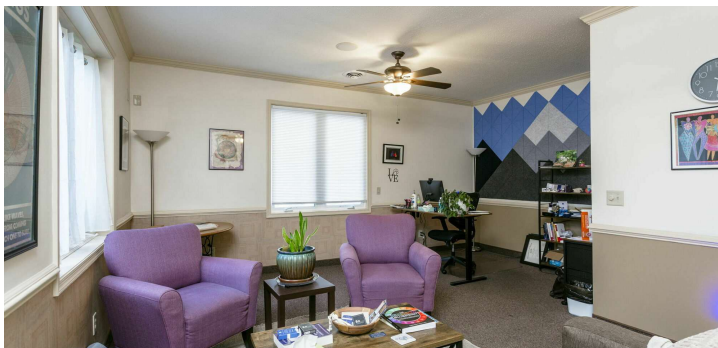
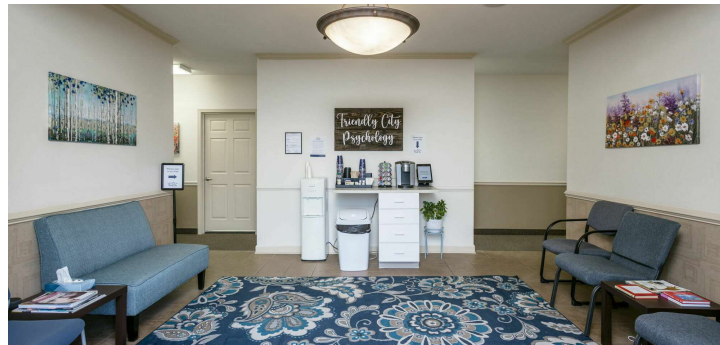
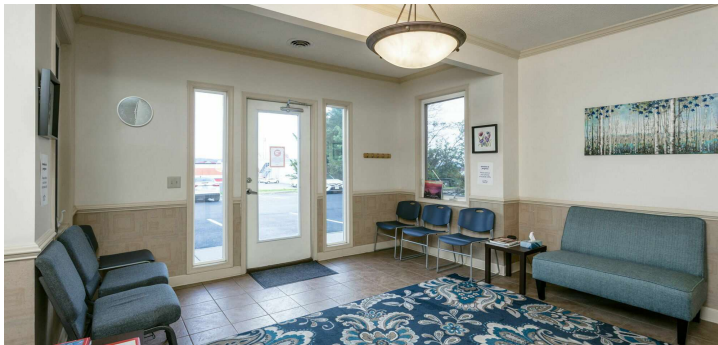
COTTONWOOD
COMMERCIAL
A COMMERCIAL REAL ESTATE BROKERAGE

We obtained the information above from sources we believe to be reliable. However, we have not verified its accuracy and make no guarantee, warranty or representation about it. It is submitted subject to the possibility of errors, omissions, change of price, rental or other conditions, prior sale, lease or financing, or withdrawal without notice. We include projections, opinions, assumptions or estimates for example only, and they may not represent current or future performance of the property. You and your tax and legal advisors should conduct your own investigation of the property and transaction.

3200SF PROFESSIONAL OFFICE SPACE AVAILABLE

3230 Peoples Dr, Harrisonburg, VA 22801

Additional Photos



For More Information:

Tom Oberholtzer

540.810.6242

tom.oberholtzer@cottonwood.com

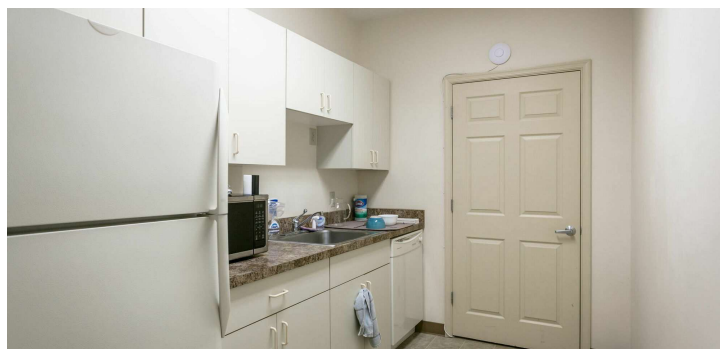
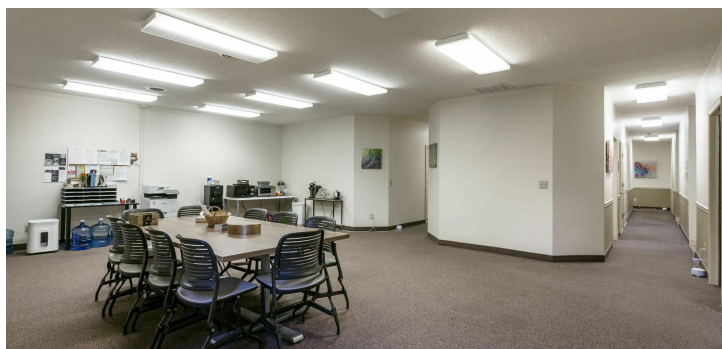
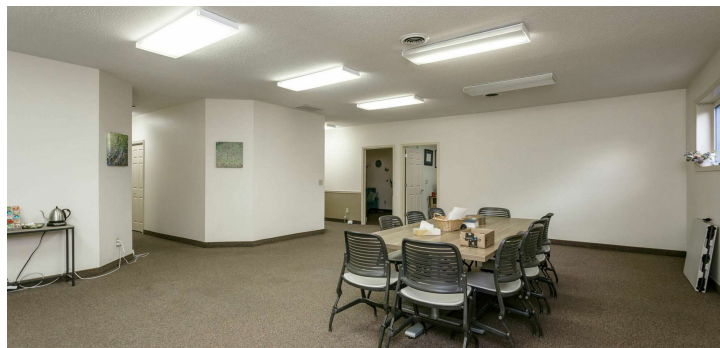
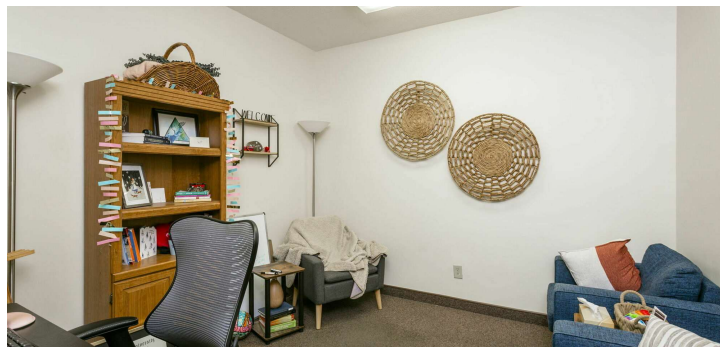
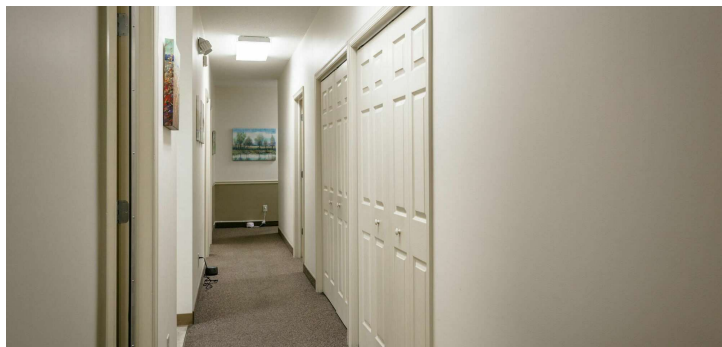
COTTONWOOD
COMMERCIAL
A COMMERCIAL REAL ESTATE BROKERAGE

We obtained the information above from sources we believe to be reliable. However, we have not verified its accuracy and make no guarantee, warranty or representation about it. It is submitted subject to the possibility of errors, omissions, change of price, rental or other conditions, prior sale, lease or financing, or withdrawal without notice. We include projections, opinions, assumptions or estimates for example only, and they may not represent current or future performance of the property. You and your tax and legal advisors should conduct your own investigation of the property and transaction.

3200SF PROFESSIONAL OFFICE SPACE AVAILABLE

3230 Peoples Dr, Harrisonburg, VA 22801

Additional Photos



For More Information:

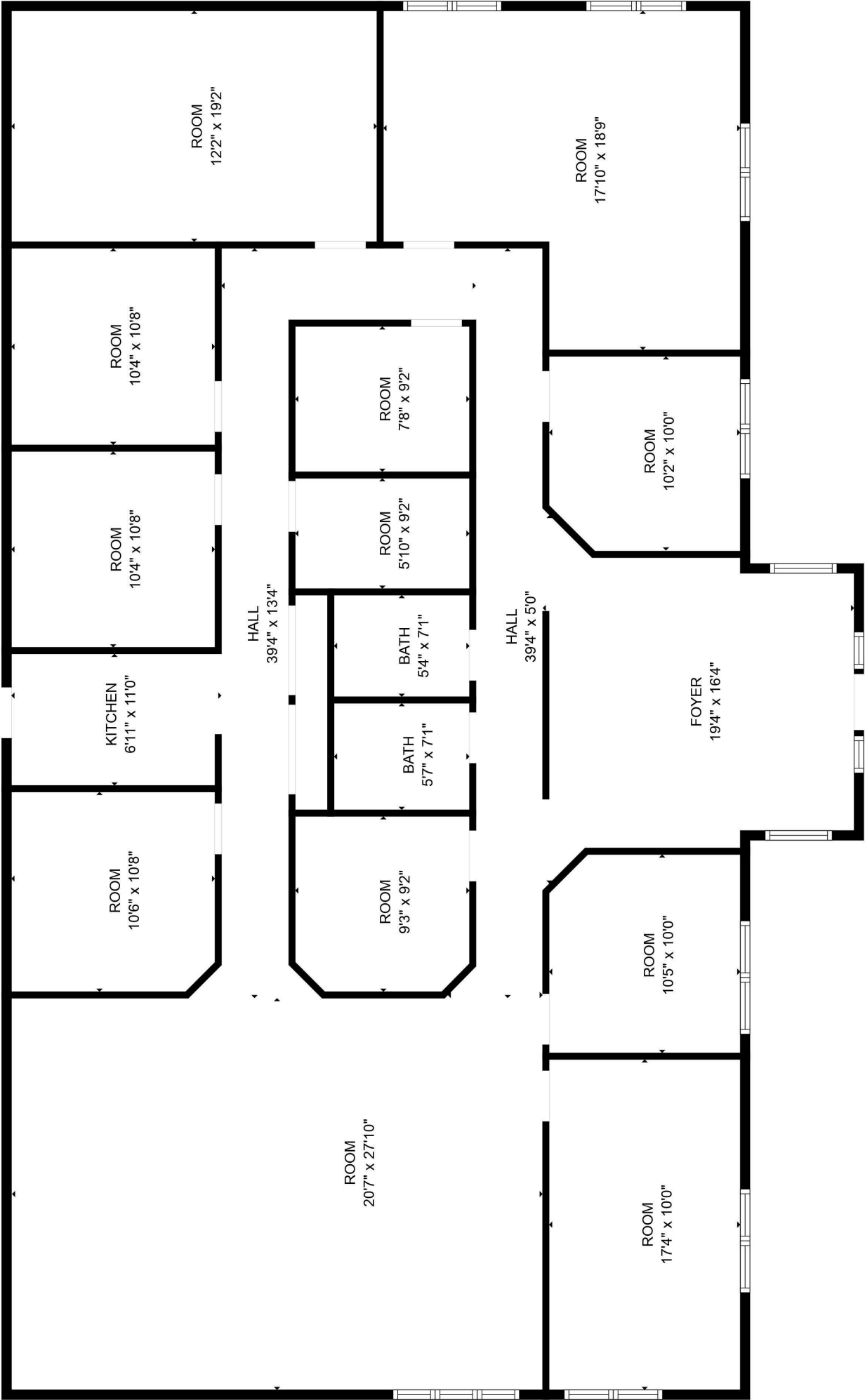
Tom Oberholtzer

540.810.6242

tom.oberholtzer@cottonwood.com

COTTONWOOD
COMMERCIAL
A COMMERCIAL REAL ESTATE BROKERAGE

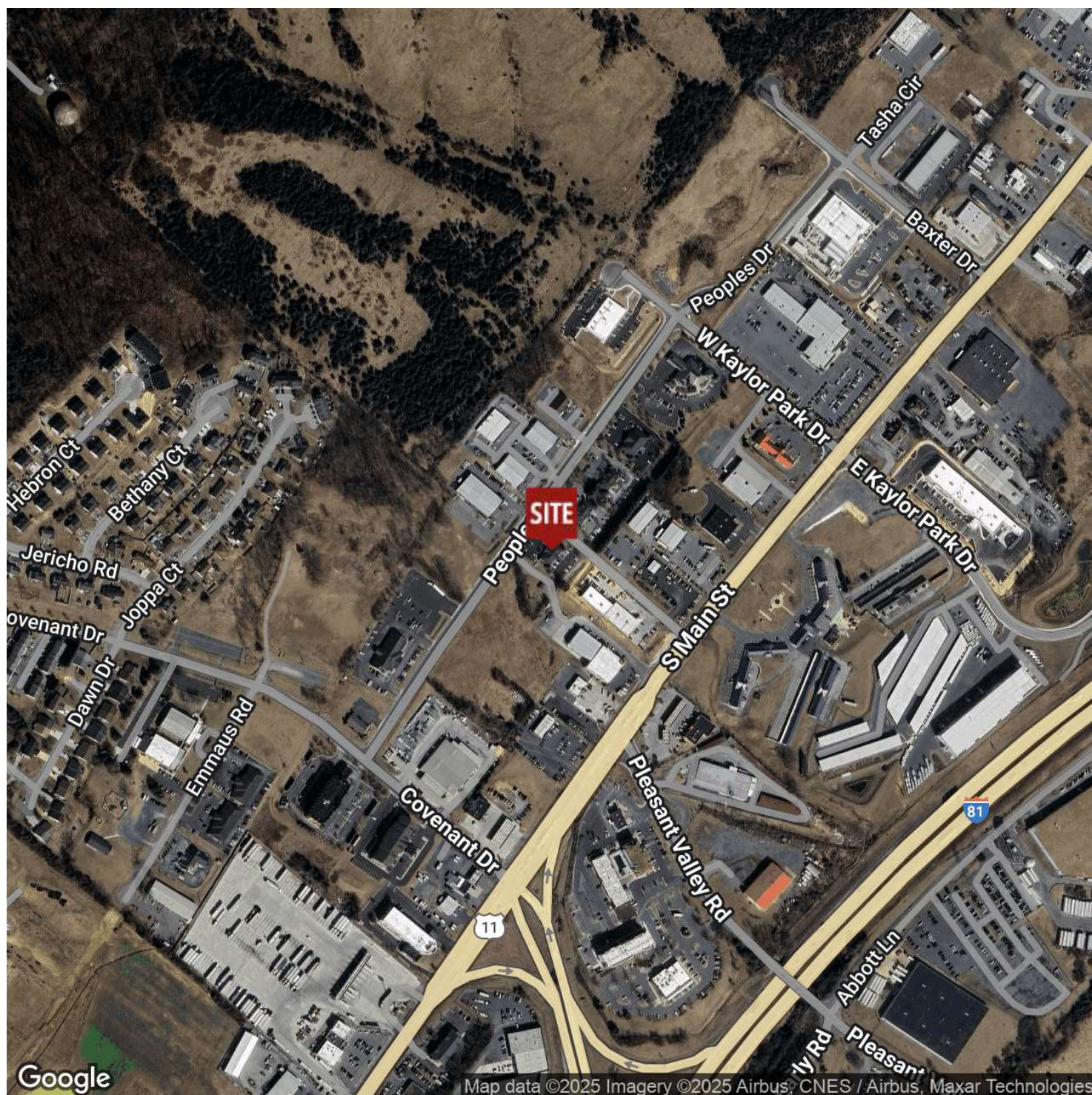
We obtained the information above from sources we believe to be reliable. However, we have not verified its accuracy and make no guarantee, warranty or representation about it. It is submitted subject to the possibility of errors, omissions, change of price, rental or other conditions, prior sale, lease or financing, or withdrawal without notice. We include projections, opinions, assumptions or estimates for example only, and they may not represent current or future performance of the property. You and your tax and legal advisors should conduct your own investigation of the property and transaction.



3200SF PROFESSIONAL OFFICE SPACE AVAILABLE

3230 Peoples Dr, Harrisonburg, VA 22801

Location Map



For More Information:

Tom Oberholtzer

540.810.6242

tom.oberholtzer@cottonwood.com

COTTONWOOD
COMMERCIAL
A COMMERCIAL REAL ESTATE BROKERAGE

We obtained the information above from sources we believe to be reliable. However, we have not verified its accuracy and make no guarantee, warranty or representation about it. It is submitted subject to the possibility of errors, omissions, change of price, rental or other conditions, prior sale, lease or financing, or withdrawal without notice. We include projections, opinions, assumptions or estimates for example only, and they may not represent current or future performance of the property. You and your tax and legal advisors should conduct your own investigation of the property and transaction.