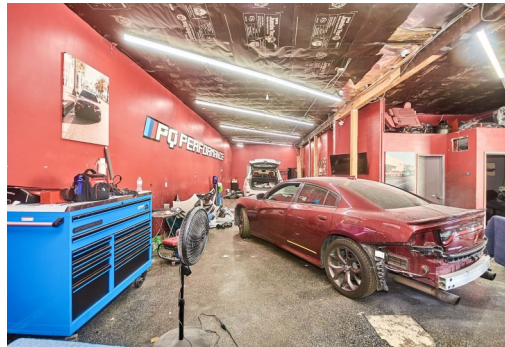
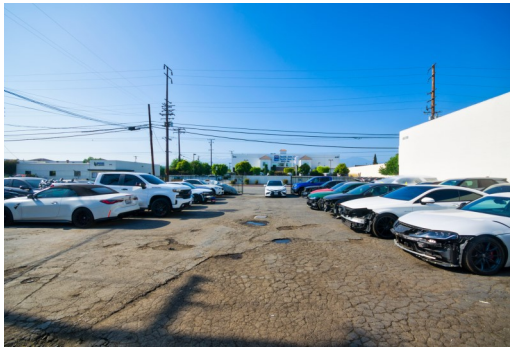


10728 RUSH ST, SOUTH EL MONTE CA 91733

Investment Or Owner Occupied



3,782 Sqft | 13,245 Sqft Lot

Offered at **\$1,780,000**

Excellent opportunity to own a freestanding industrial/commercial building in a high-demand South El Monte location. This versatile property offers strong investment potential with long-term upside for both investors and owner-users. Zoned M1, it is ideal for a variety of industrial and commercial uses—including auto-related businesses, warehousing, light manufacturing, and distribution. The site features gated access, ample on-site parking, a practical layout, and convenient loading capabilities. With easy access to the 60, 10, and 605 freeways, it offers excellent regional connectivity for transportation and business operations. Located in one of the most active industrial corridors in the San Gabriel Valley, this property presents a rare opportunity for those seeking flexibility, visibility, and long-term value.



Allison Huang
Realtor®
CalDRE#: 01869453

626.641.7678
achh88@gmail.com

RE/MAX
Premier Properties
133 E Huntington Dr
Arcadia, CA 91006