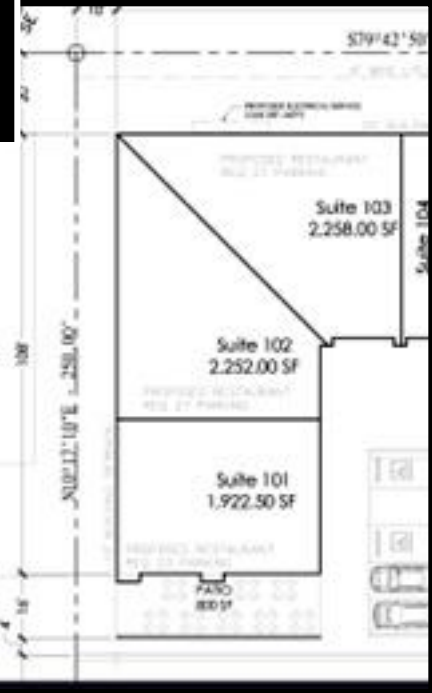




*Cortland Plaza*  
*2324 Jacaman Road 101, 102. &103*

Total of 6,432.50 Sq.Ft.  
Plus Patio  
\$ 2.10 Per Sq Ft. per Month



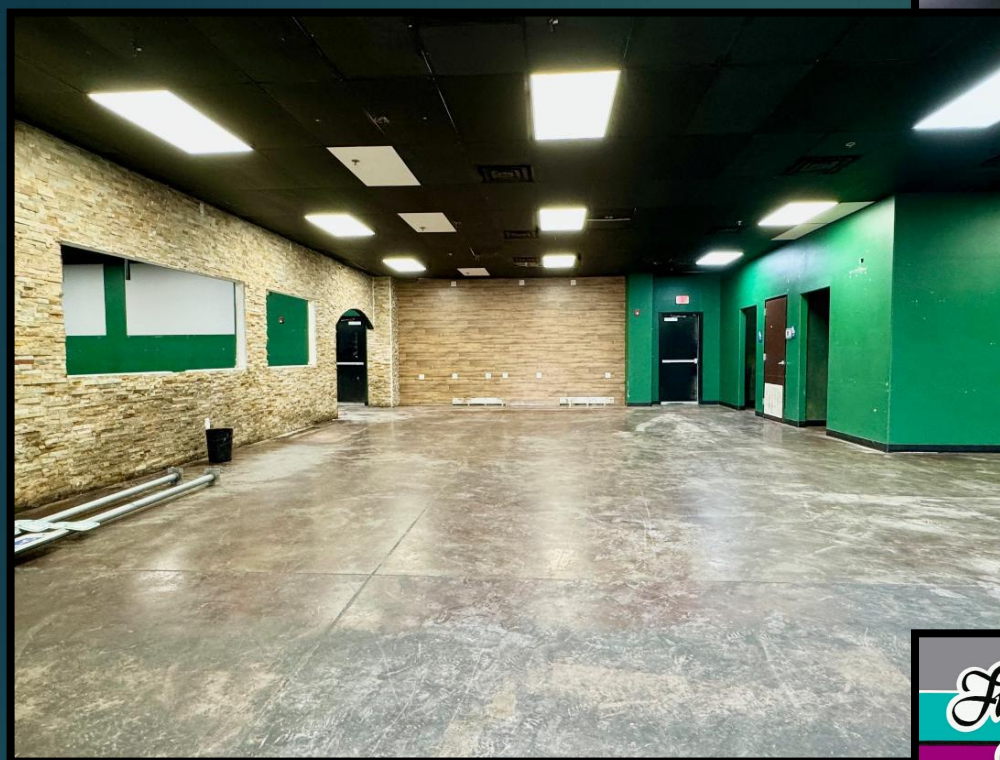
2 Large Rooms  
2 Bathroom Facilities  
Office,  
Plenty of Parking

The strategic location near TAMIU and Lakeside Subdivision provide excellent traffic for your business at a highly visible location along with quick access via Loop 20

For more information call *Lula Morales* at 956-206 9094 or [lulaemoraless@aol.com](mailto:lulaemoraless@aol.com)

# Pictures



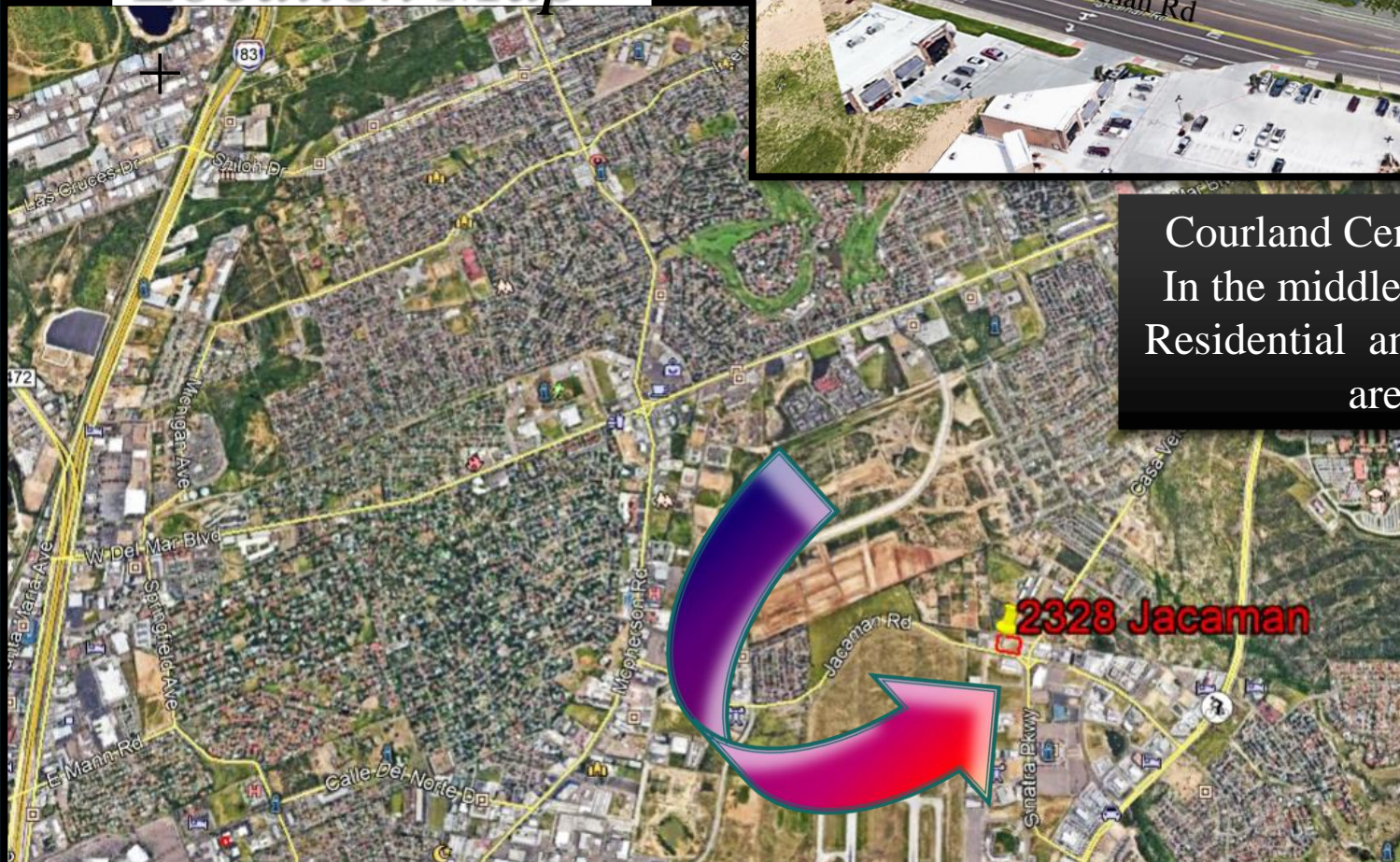


2 Bathroom Facilities

## Location Map-



Courland Center is located  
In the middle of a bustling  
Residential and Commercial  
areas.



For more information call Lula Morales at 956-206 9094 or [lulaemoraless@aol.com](mailto:lulaemoraless@aol.com)